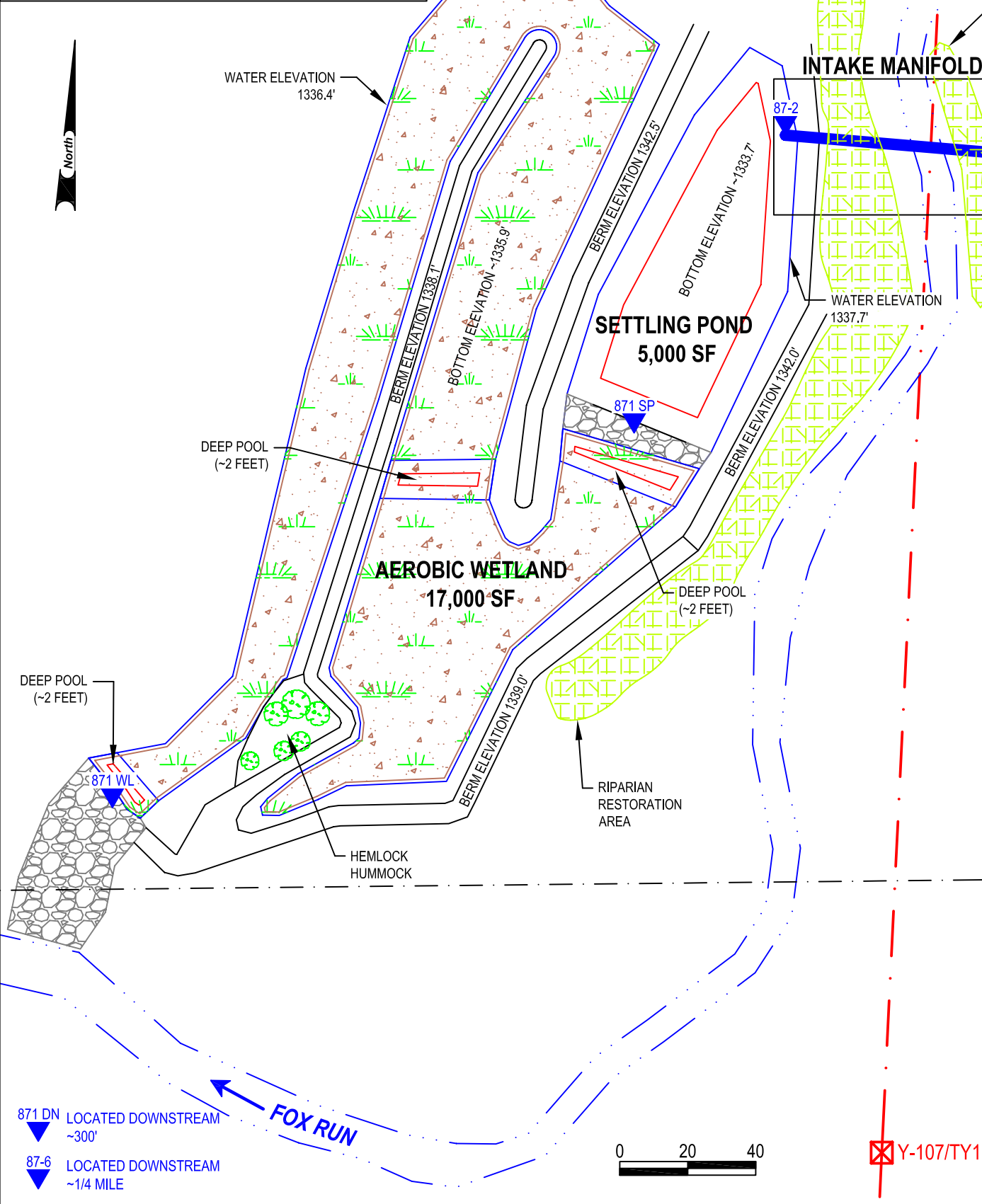


AS-BUILT SCHEMATIC

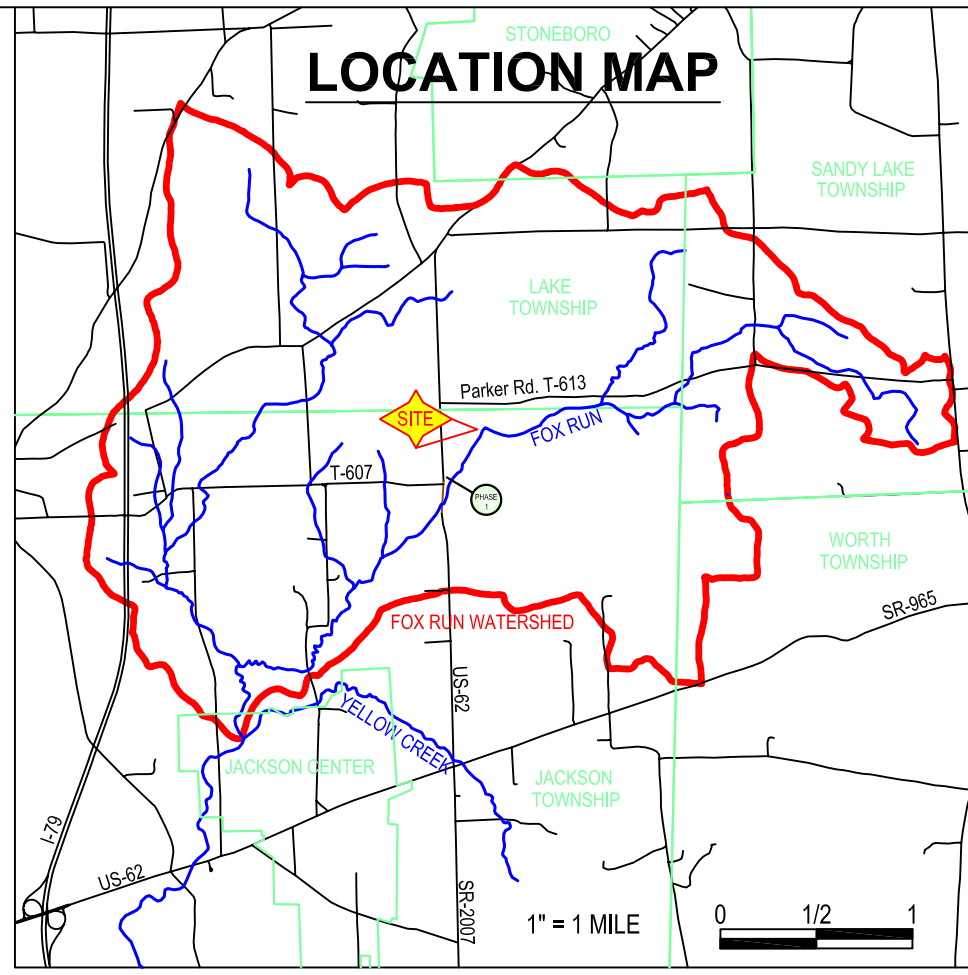
PASSIVE TREATMENT SYSTEM
FOX RUN RESTORATION AREA - PHASE II
 for
 STREAM RESTORATION INCORPORATED
 Jackson & Lake Townships, Mercer County, Pennsylvania
 Scale: As Shown June 2008
 BioMost, Inc., Mining and Reclamation Services
 Mars, PA
 871AB/lab schematic



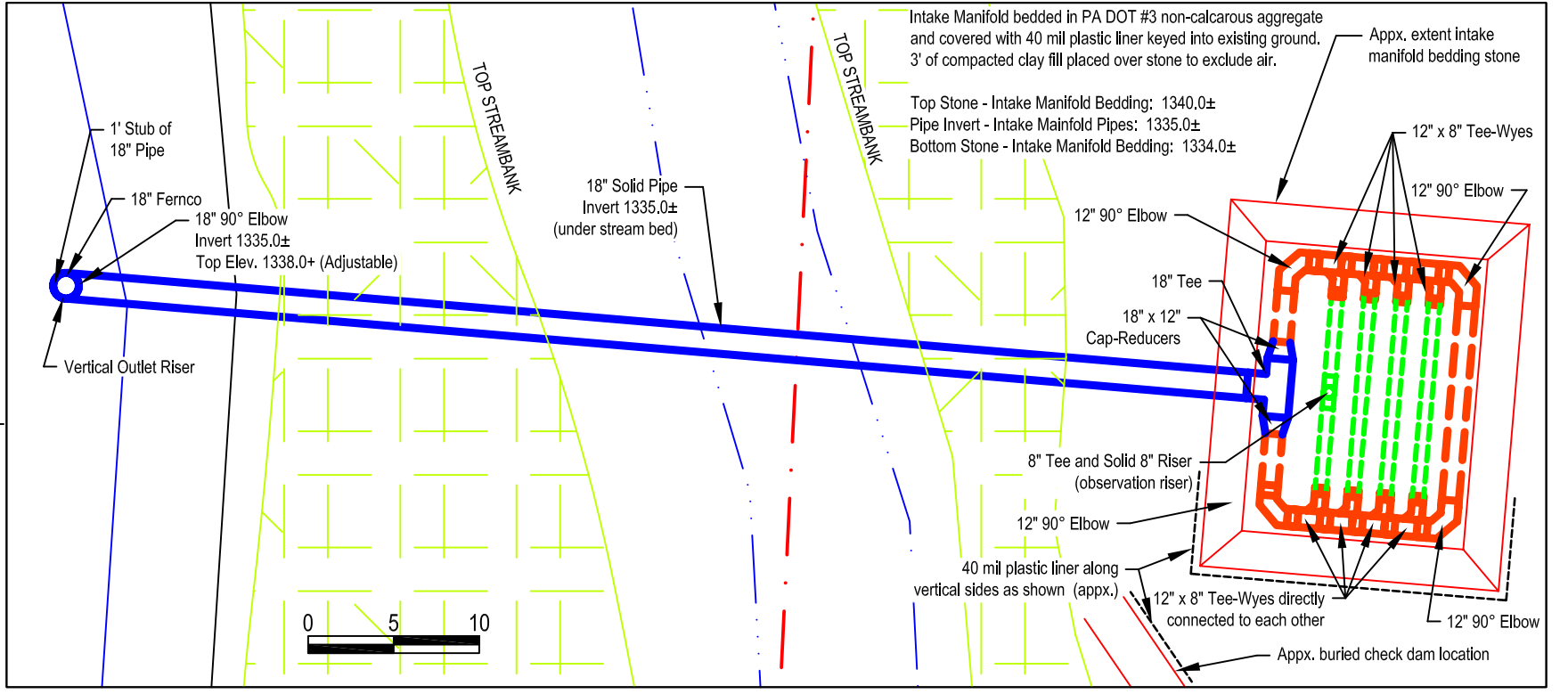
LEGEND

- WATER SURFACE ELEVATION
- FOX RUN
- TOP BERM/STREAMBANK
- PTS COMPONENT
- AEROBIC WETLAND
- RIP-RAP (R4)
- TRANSMISSION LINE & POLE
- FENCE (APPROXIMATE LOCATION)
- 18" SOLID PIPE
- 12" PERFORATED PIPE
- 8" PERFORATED PIPE
- PTS WETLAND BOTTOM
- WATER SAMPLING POINT

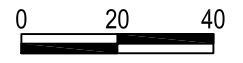
Notes:
 As-built information from 09/26/08 field inspection by BioMost, Inc. and Mercer County Conservation District using post-processed sub-meter GPS unit and laser level as well as design information and is a reasonable representation of actual field conditions.
 Water elevations may vary due to outlet spillway, weather and other factors.
 Passive treatment system built on property of Richard & Barbara Kish. All pipe is SDR35 PVC.
 Stream location from aerial photography taken for the PAMAP program (Spring 2006) and sub-meter GPS unit
 Settling pond and wetland areas shown measured at top of water. Total wetland area "foot print" ~3/4 Acre.



INTAKE MANIFOLD DETAIL Scale 1"=10'



871 DN LOCATED DOWNSTREAM
 ~300'
 87-6 LOCATED DOWNSTREAM
 ~1/4 MILE



Y-107/TY111