

**SAMPLES TO BE COLLECTED AT THE FOLLOWING 16 POINTS:**

- Point #1 (MP10IN) MP10 Discharge into treatment system
- Point #2 (MP10OUT) MP10 Effluent
- Point #3 (MP10SAP) MP10SAP Effluent
- Point #4 (MP10SP) MP10 Sed. Pond Effluent
- Point #5 (MP11IN) MP11 Discharge into treatment system
- Point #6 (MP11OUT) MP11 Effluent
- Point #7 (MP11SAP) MP11SAP Effluent
- Point #8 (MP11SP) MP11 Sed. Pond Effluent
- Point #9 (MP12IN) MP12 Discharge into treatment system
- Point #10 (MP12OUT) MP12 Effluent
- Point #11 (MP12SAP) MP12SAP Effluent
- Point #12 (MP12SP1) MP12 Sed. Pond 1 Effluent
- Point #13 (MP12SP2) MP12 Sed. Pond 2 Effluent
- Point #14 (SRDS) Sandy Run Downstream of treatment systems
- Point #15 (SRUS) Sandy Run Upstream of treatment systems
- Point #16 (SEEP) Seep at PVC Pipe in wetland pond to SAP 12 out

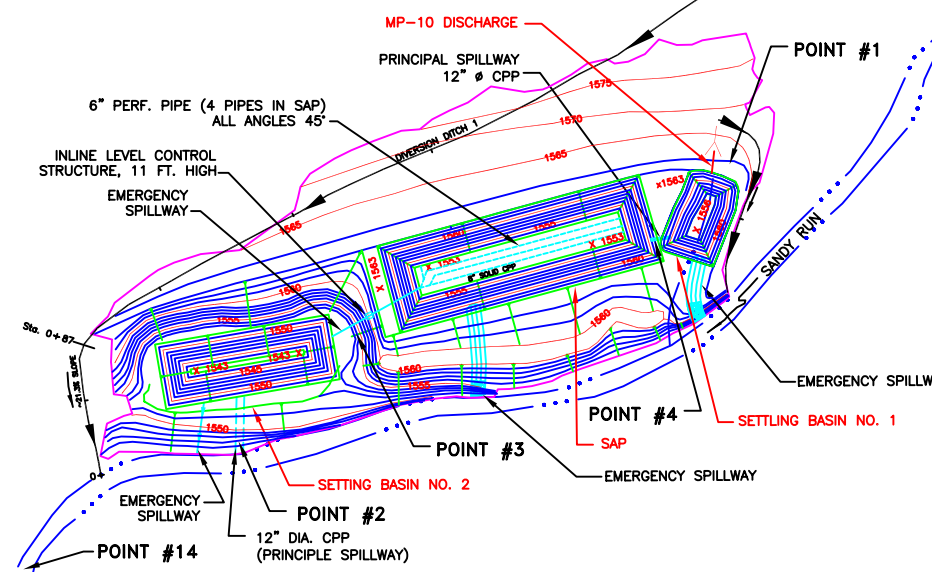
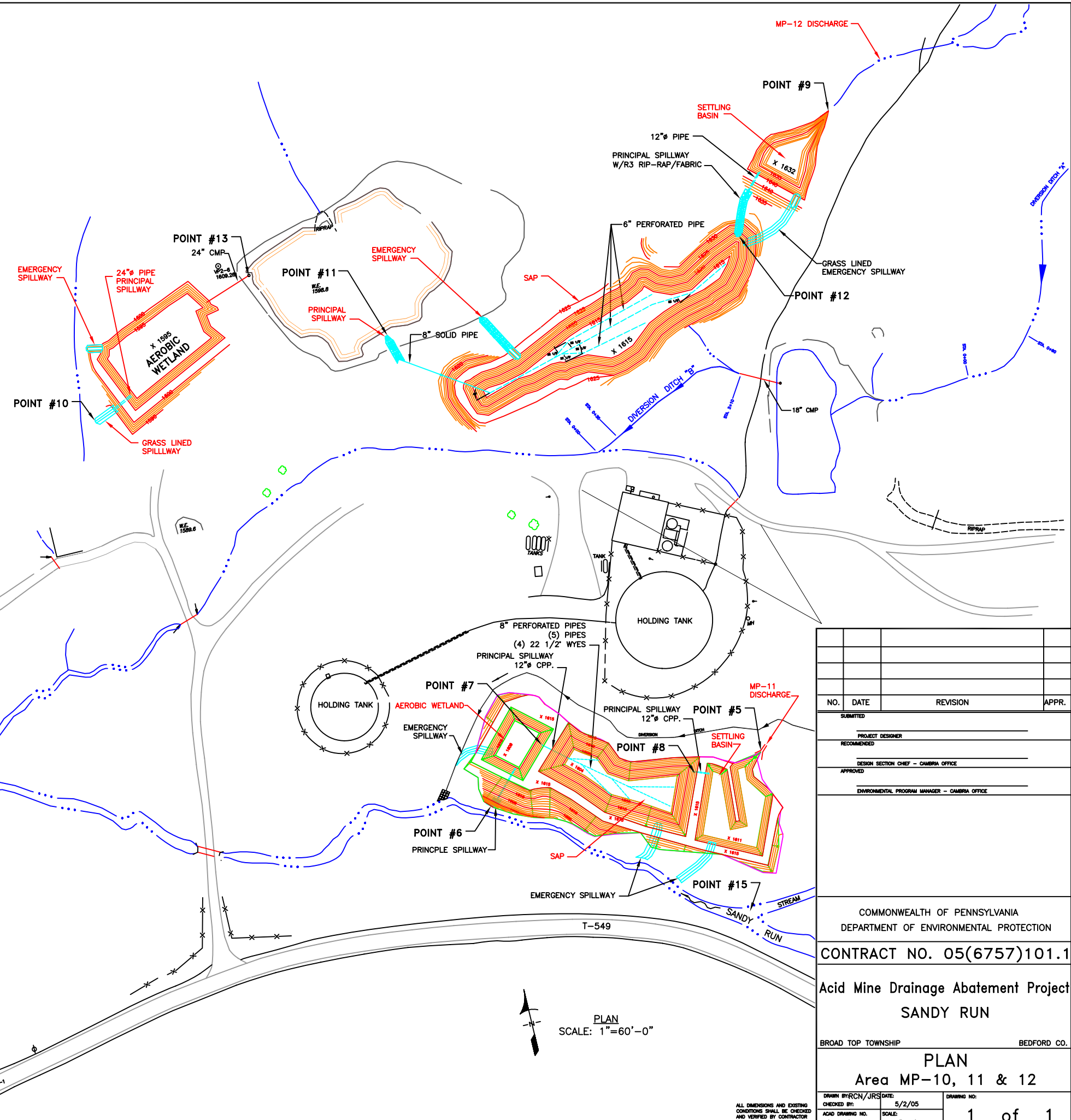
**Flushing Schedule**

VFP10 and 12 need to be flushed once every three months. Once the piping problem is fixed on MP11VFP, it will be flushed with the other two ponds. The flushed water should not be discharged directly into the stream. Therefore, it may be necessary to lower the water level in sediment pond 10 by pumping, before flushing VFP10.

**Flushing Sequence:**

STEP 1 - Pull all stoplogs out from the Agri Drain flow control structure located below VFP10 and VFP12. As soon as these stoplogs are pulled out, the water will flush out into sediment ponds 10 and 12 respectively. Stoplogs in the flow control structures, which control water level in these ponds, are made of plastic and they get coated with metal oxides. Accumulated sediments on these stoplogs and inside of these flow control structures need to be cleaned when flushing occurs. Allow the water to flow until the flush water has cleared. Once the flush water has cleared, put the stoplogs back into the flow control box and lock them.

NOTE: Sometimes it may be necessary to lower the water level in these VFPs. Removing one or two stoplogs or rearranging them, can help lowering the water level in these ponds.



NO.	DATE	REVISION	APPR.

SUBMITTED	
PROJECT DESIGNER	
RECOMMENDED	
DESIGN SECTION CHIEF - CAMBRIA OFFICE	
APPROVED	
ENVIRONMENTAL PROGRAM MANAGER - CAMBRIA OFFICE	

COMMONWEALTH OF PENNSYLVANIA  
DEPARTMENT OF ENVIRONMENTAL PROTECTION

CONTRACT NO. 05(6757)101.1

Acid Mine Drainage Abatement Project  
SANDY RUN

BROAD TOP TOWNSHIP BEDFORD CO.

PLAN  
Area MP-10, 11 & 12

DRAWN BY: RCH/JRS DATE: 5/2/05  
CHECKED BY: ACAD DRAWING NO. 05(67457)Mon Print SCALE: 1"=60'  
DRAWING NO. 1 of 1

ALL DIMENSIONS AND EXISTING CONDITIONS SHALL BE CHECKED AND VERIFIED BY CONTRACTOR AT THE SITE.

