

LEGEND

- PASSIVE SYSTEM COMPONENT
- CONTOUR - INDEX
- CONTOUR - INTERMEDIATE
- WATER
- PROJECT BOUNDARY
- E(TH) UTILITY LINE (E-ELECTRIC)
- ⊙ UTILITY POLE
- PAVED/IMPROVED ROAD
- UNIMPROVED ROAD
- TRAIL
- OUT BUILDING OR OTHER STRUCT.
- 4" PVC SCH 40 SOLID (UPPER TIER)
- 4" PVC SCH 40 PERFORATED (UPPER TIER)
- 4" PVC SCH 40 SOLID (LOWER TIER)
- 4" PVC SCH 40 PERFORATED (LOWER TIER)
- CLEANOUT
- 10" PVC SDR 35 SOLID
- 8" PVC SDR 35 SOLID
- RIP RAP (R-4) SPILLWAY CHANNEL
- BIOSWALE (VEGETATED CHANNEL)
- × SPOT ELEVATION
- AS BUILT CROSS SECTION
- TOP OF EMBANKMENT
- TOE OF SLOPE

Water Sample Notes:
 Constructed wetlands and settling ponds sampled at spillway outlets.
 Vertical Flow Ponds sampled at discharge pipes.
 VFP3 - Western set of 8 pipes
 VFP4 - Eastern set of 8 pipes
 Bioswale sampled prior to confluence with WL1 effluent.
 40/42 may include effluent from upper wetland (treated ST41 discharge) if OLC is being directed into 40/41 conveyance pipe.
 ST42 sampling point location unchanged.

APPROXIMATE ORIGINAL DISCHARGE MONITORING LOCATIONS (BEFORE CONSTRUCTION) (MONITORING WEIRS LOCATED DOWNGRADIENT)
 SAMPLE POINT LOCATIONS (POST CONSTRUCTION)

Notes:
 Base map prepared by PA DEP, BAMR, from aerial photographs taken 2/16/99.
 As-Built EDM survey by Chamberlin Surveying and Consulting, Brookville PA with additional information from site inspections provided by BioMost, Inc., Aquascape, and Quality Aggregates.
 Wetland surface areas calculated at approximate water elevation.
 Water surface areas and elevations subject to change based on passive component permeability and/or spillway outlet conditions.
 Diversion ditch not located by survey.

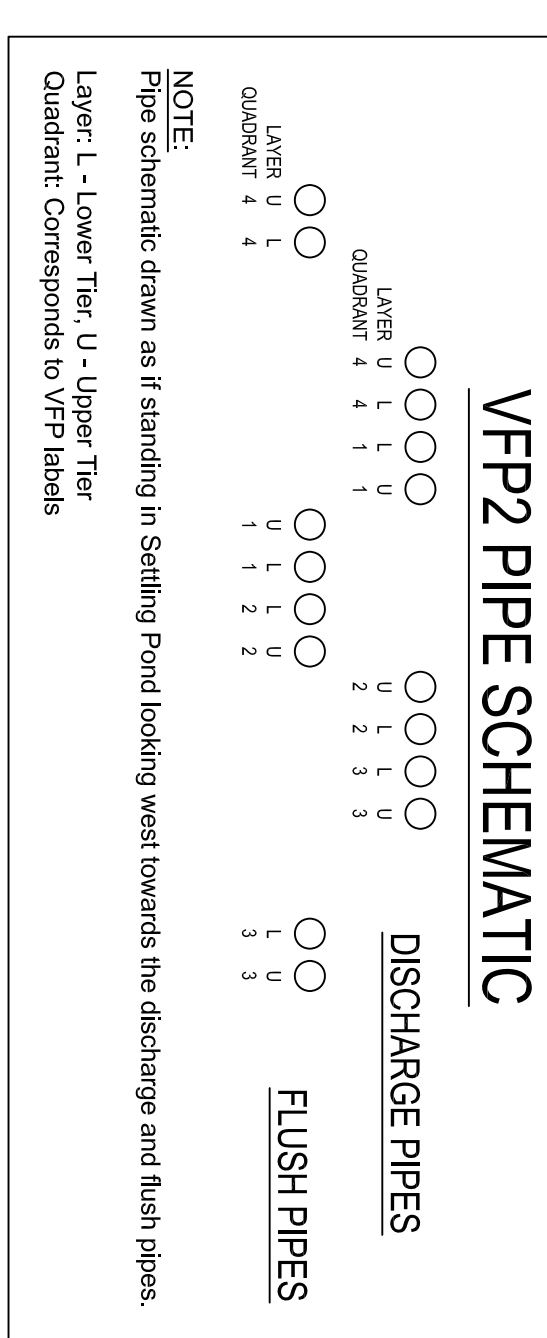
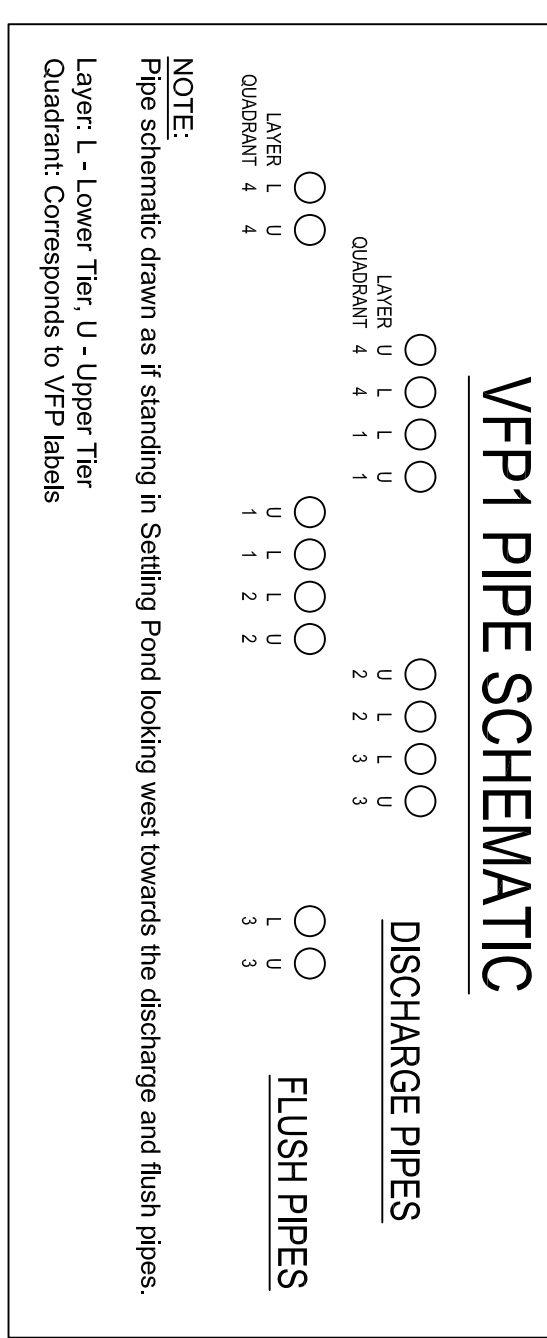
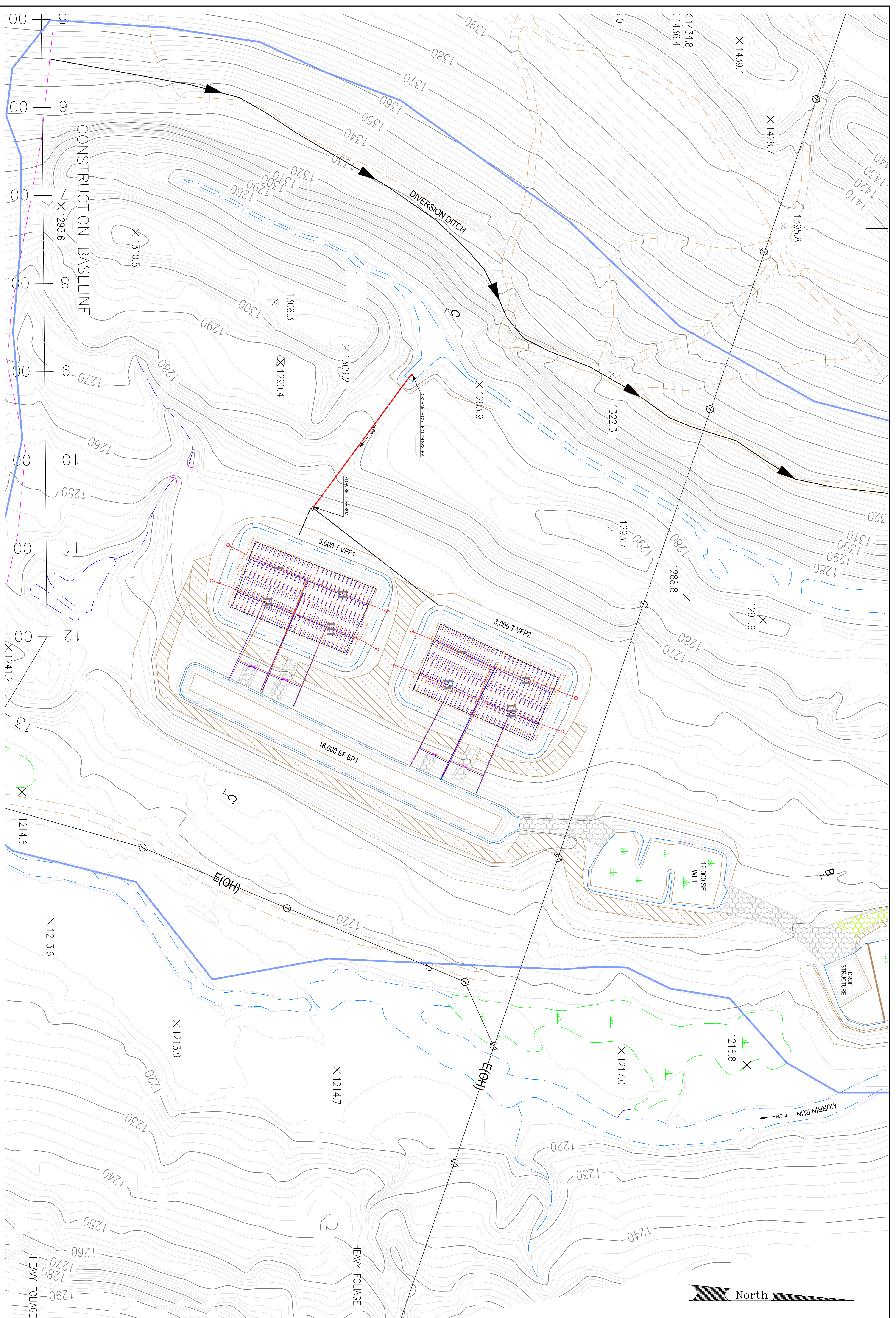
Passive Component Abbreviations:
 FP - Flush Pond
 SP - Settling Pond
 VFP - Vertical Flow Pond
 WL - Wetland



REVIEWED BY	REVIEWED BY

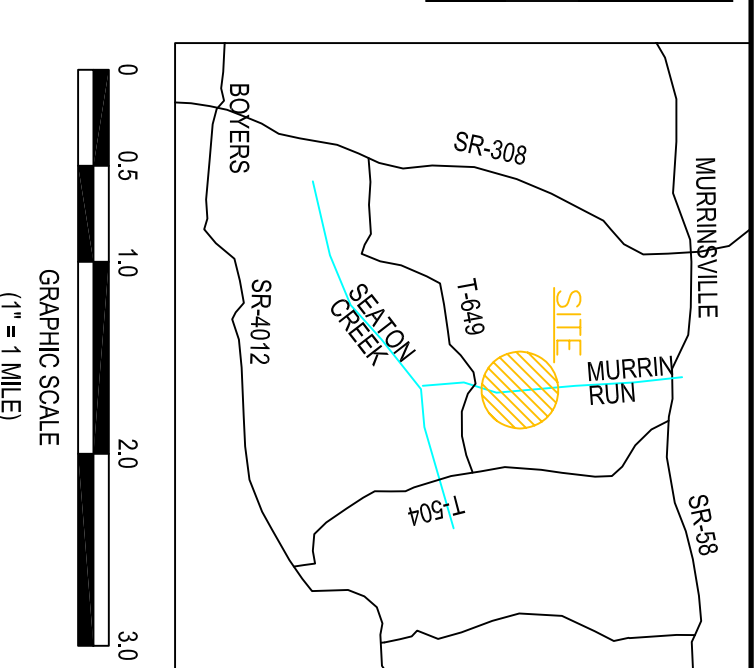
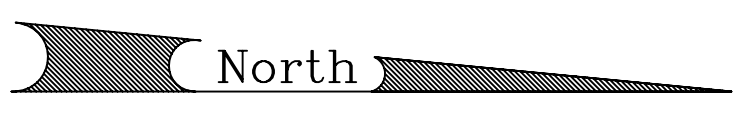
SHEET 1 OF 4

AS-BUILT PLANS - PROJECT AREA
GOFF STATION RESTORATION AREA
 Slippery Rock Watershed Coalition
 STREAM RESTORATION INCORPORATED
 situate in
 Venango Township
 Butler County, PA
 Scale: 1" = 100' Date: 11/2001
 BioMost, Inc., Cranberry Twp., PA



Notes:
 Base map prepared by PA DEP - BAMR, from aerial photographs taken 2/18/99.
 As-Built EDM survey by Chamberlin Surveying and Consulting, Brookville PA with additional information from site inspections provided by Bhollos, Inc., Adquascape, and Wetland Services.
 Wetland and stream areas calculated at approximate water elevation.
 Water surface areas and elevations subject to change based on passive component permeability and/or soil/water outlet conditions.
 Diversion ditch not located by survey.

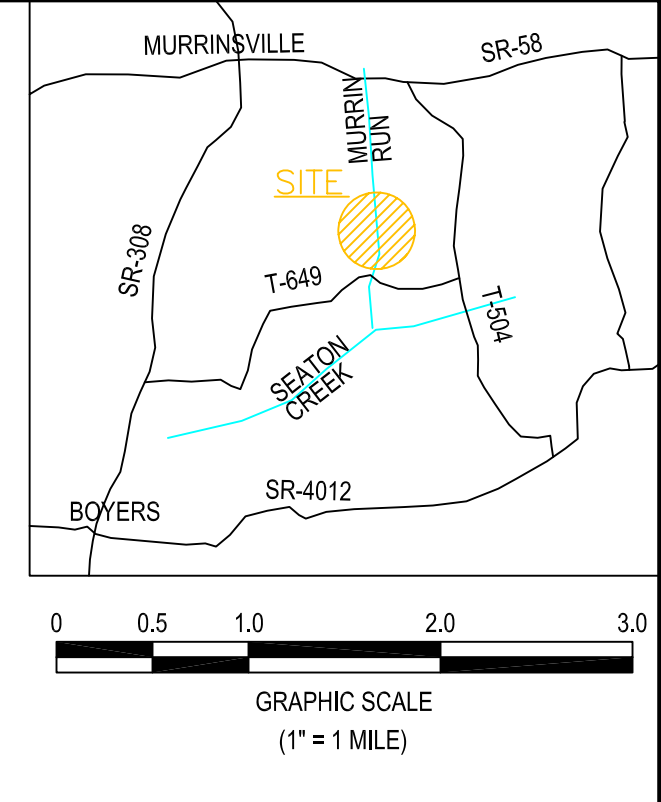
Passive Component Abbreviations:
 SP - Settling Pond
 VFP - Vertical Flow Pond
 WL - Wetland



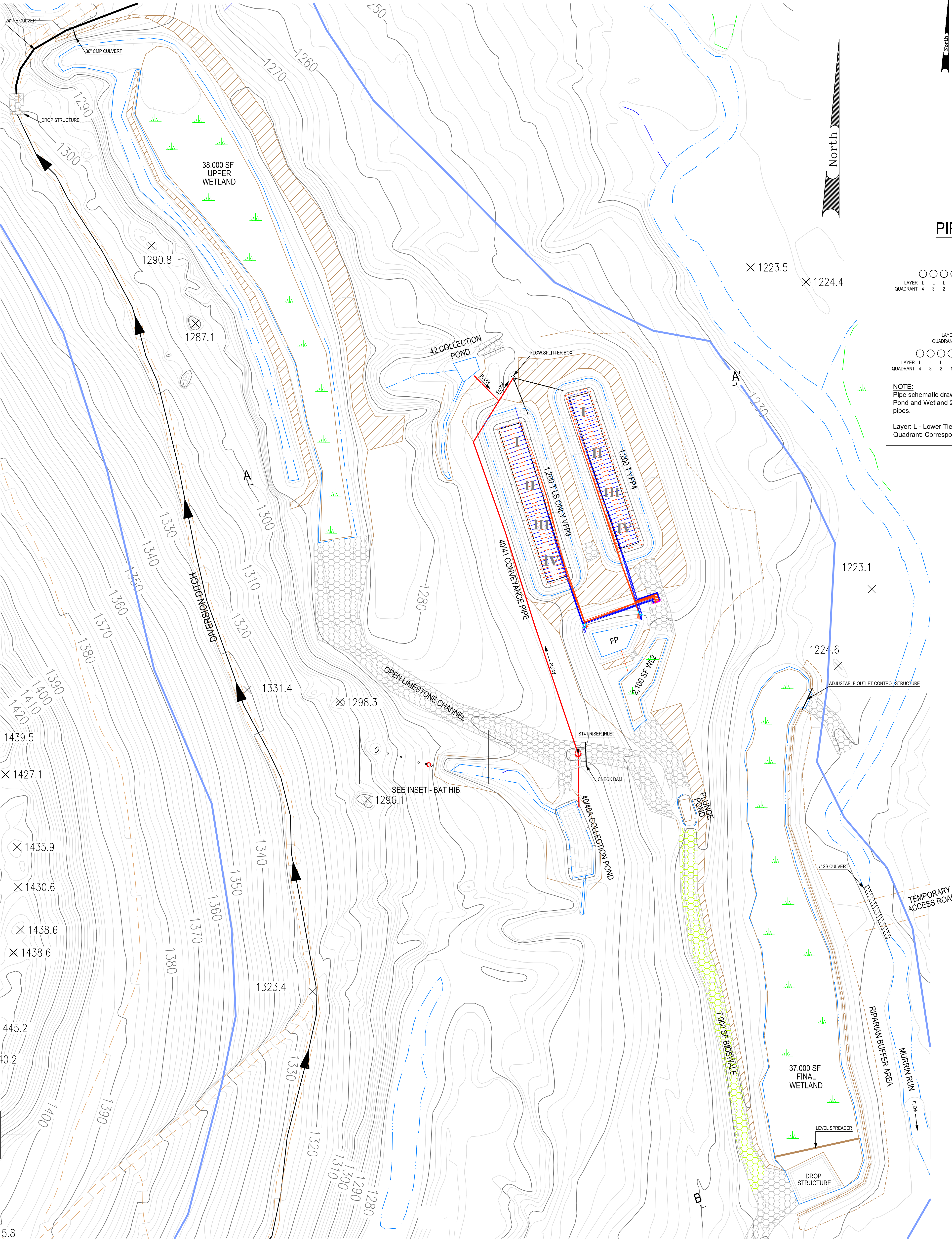
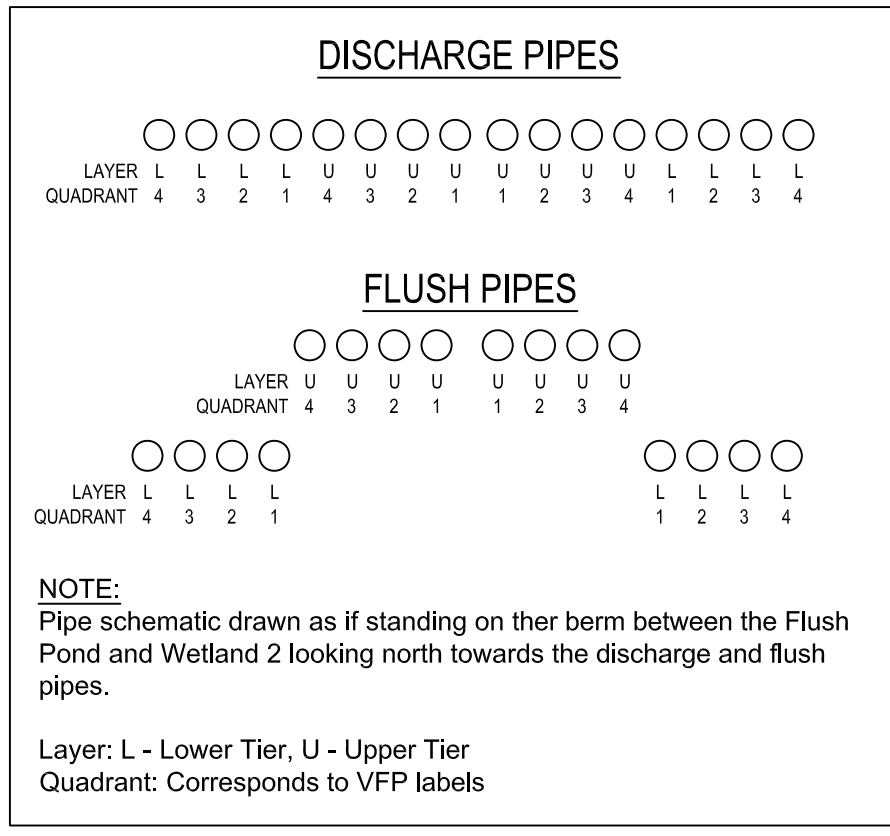
LEGEND

—	PASSIVE SYSTEM COMPONENT
—	CONTOUR - INDEX
—	CONTOUR - INTERMEDIATE
—	WATER
—	PROJECT BOUNDARY
—	UTILITY LINE (ELECTRIC)
—	UTILITY POLE
—	PAVED/IMPROVED ROAD
—	UNIMPROVED ROAD
—	TRAIL
□	OUT BUILDING OR OTHER STRUCT.
—	4" PVC SCH 40 SOLID (UPPER TIER)
—	4" PVC SCH 40 PERFORATED (UPPER TIER)
—	4" PVC SCH 40 SOLID (LOWER TIER)
—	4" PVC SCH 40 PERFORATED (LOWER TIER)
—	10" PVC SDR 35 SOLID
—	8" PVC SDR 35 SOLID
—	RIP RAP (R-4) SPILLWAY CHANNEL
—	BOSQUALE (VEGETATED CHANNEL)
—	SPOT ELEVATION
—	X 1213.6
—	AS BUILT CROSS SECTION
—	TOP OF EMBANKMENT
—	TOE OF SLOPE
—	FLUSH VALVE
—	ADJUSTABLE OUTLET RISER
—	CLEANOUT

REVIEWED BY	REVIEWED BY
AS-BUILT PLANS - VFP 1 & 2 GOFF STATION RESTORATION AREA Slippery Rock Watershed Coalition STREAM RESTORATION INCORPORATED	
SHEET 2 OF 4	
Vanango Township Butler County, PA Scale: 1" = 50' Date: 11/20/01 Bhollos, Inc., Cranberry Twp., PA	

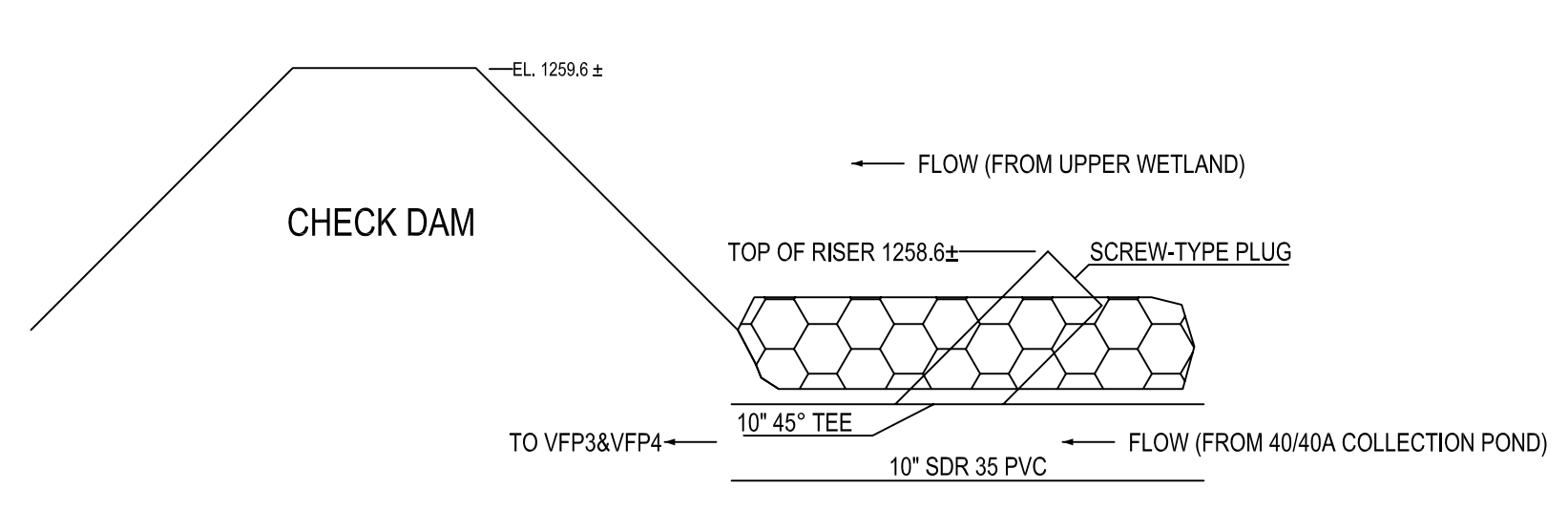


PIPE SCHEMATIC

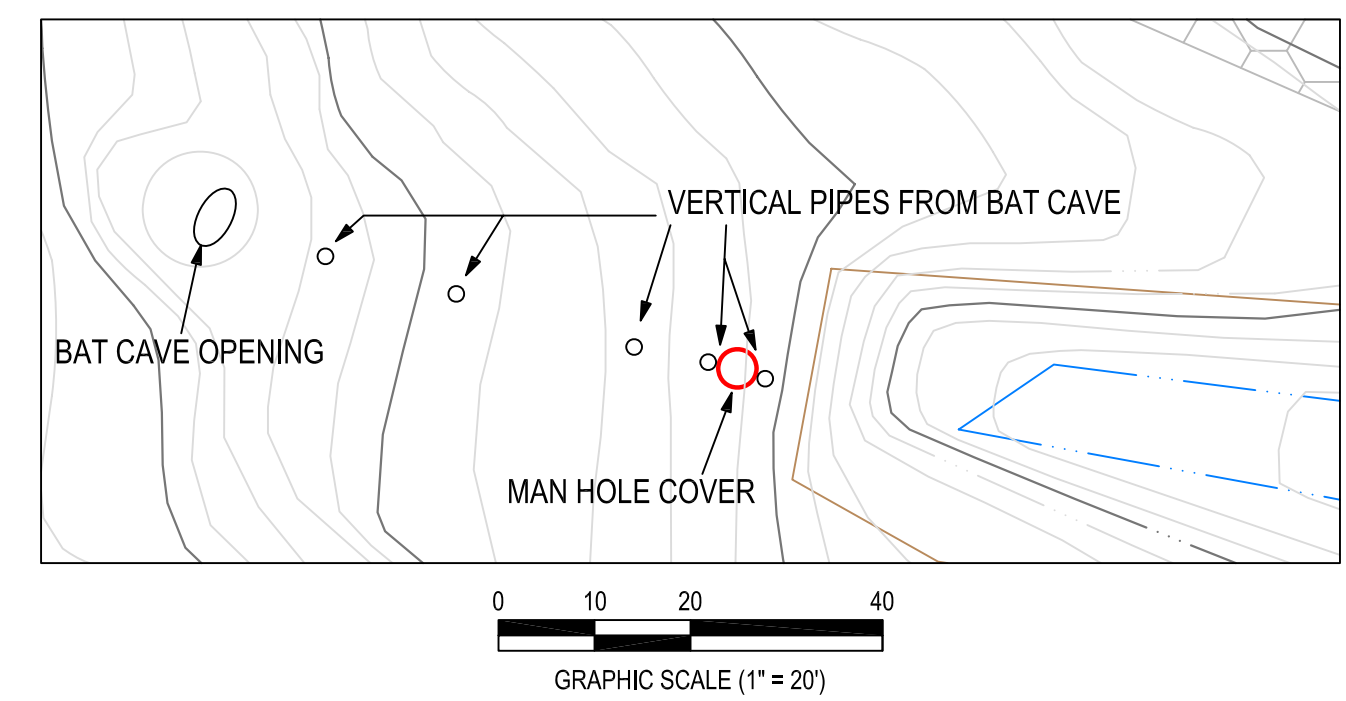


- LEGEND**
- PASSIVE SYSTEM COMPONENT
 - CONTOUR - INDEX
 - CONTOUR - INTERMEDIATE
 - WATER
 - PROJECT BOUNDARY
 - UTILITY LINE (E-ELECTRIC)
 - ⊘ UTILITY POLE
 - PAVED/IMPROVED ROAD
 - UNIMPROVED ROAD
 - TRAIL
 - OUT BUILDING OR OTHER STRUCT.
 - 4" PVC SCH 40 SOLID (UPPER TIER)
 - 4" PVC SCH 40 PERFORATED (UPPER TIER)
 - 4" PVC SCH 40 SOLID (LOWER TIER)
 - 4" PVC SCH 40 PERFORATED (LOWER TIER)
 - 10" PVC SDR 35 SOLID
 - 8" PVC SDR 35 SOLID
 - RIP RAP (R-4) SPILLWAY/CHANNEL
 - BIOSWALE (VEGETATED CHANNEL)
 - ⊗ 1213.6 SPOT ELEVATION
 - AS BUILT CROSS SECTION
 - TOP OF EMBANKMENT
 - TOE OF SLOPE
 - FLUSH VALVE
 - ADJUSTABLE OUTLET RISER
 - CLEANOUT

ST41 RISER INLET

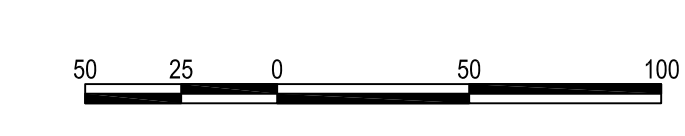


BAT HIBERNACULUM



Notes:
 Base map prepared by PA DEP, BAMR, from aerial photographs taken 2/16/99. As-Built EDM survey by Chamberlin Surveying and Consulting, Brookville PA with additional information from site inspections provided by BioMost, Inc., Aquascape, and Quality Aggregates.
 Wetland surface areas calculated at approximate water elevation. Water surface areas and elevations subject to change based on passive component permeability and/or spillway outlet conditions.
 Diversion ditch not located by survey.

Passive Component Abbreviations:
 FP - Flush Pond
 VFP - Vertical Flow Pond
 WL - Wetland

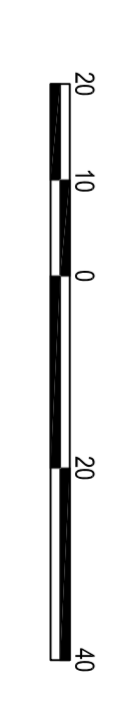
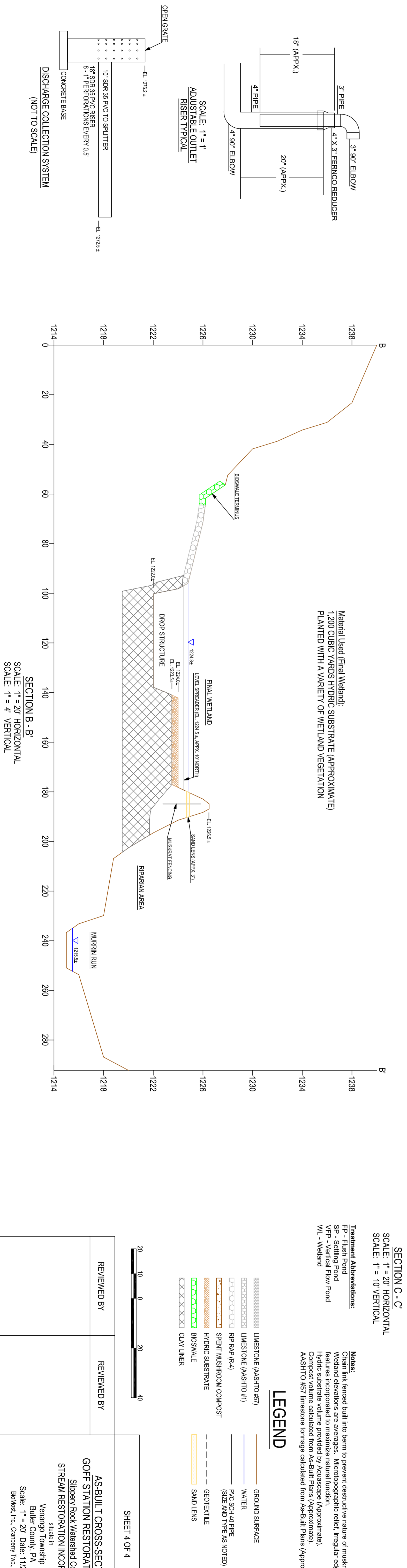
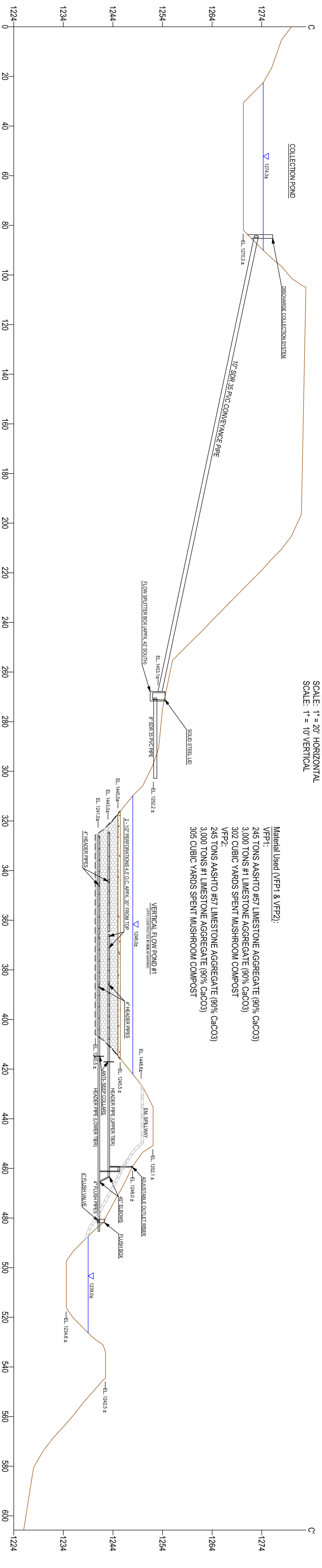
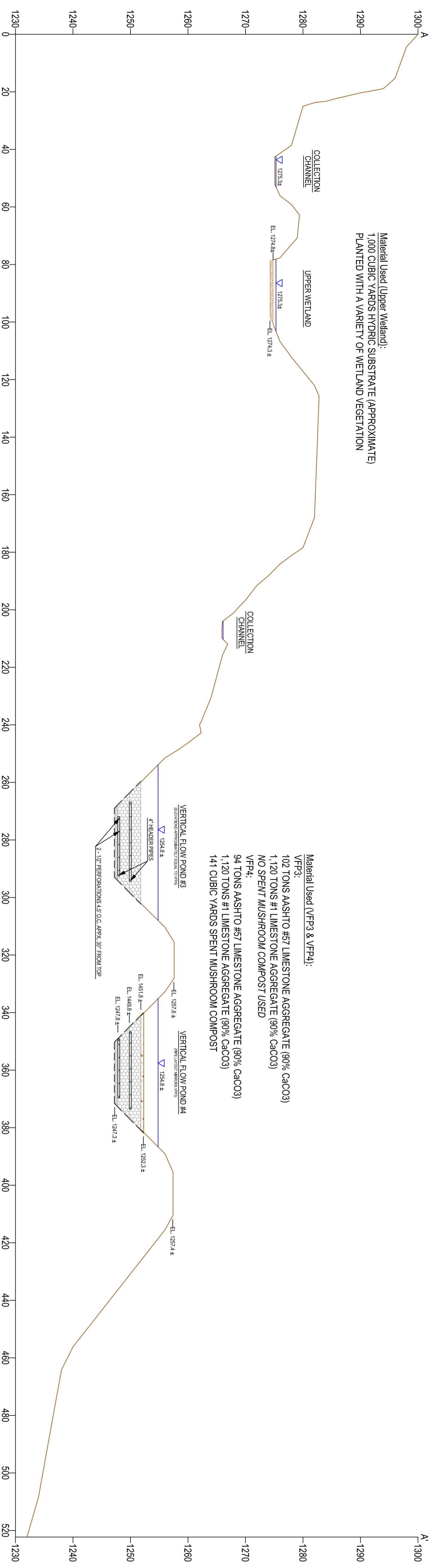


REVIEWED BY	REVIEWED BY

SHEET 3 OF 4

AS-BUILT PLANS - VFP 3 & 4
GOFF STATION RESTORATION AREA
 Slippery Rock Watershed Coalition
 STREAM RESTORATION INCORPORATED
 situate in
 Venango Township
 Butler County, PA
 Scale: 1" = 50' Date: 11/2001
 BioMost, Inc., Cranberry Twp., PA

Material Used (Upper Wetland):
1,000 CUBIC YARDS HYDRIC SUBSTRATE (APPROXIMATE)
PLANTED WITH A VARIETY OF WETLAND VEGETATION



SHEET 4 OF 4

REVIEWED BY	REVIEWED BY
AS-BUILT CROSS-SECTIONS GOFF STATION RESTORATION AREA Slippery Rock Watershed Coalition situate in Venango Township Butler County, PA Scale: 1" = 20' Date: 11/2001 Biolocist, Inc. Camberry Twp., PA	