

COMMONWEALTH OF PENNSYLVANIA

DEPARTMENT OF ENVIRONMENTAL PROTECTION

ACID MINE DRAINAGE TREATMENT PROJECT

JB #2 SITE

SMITH TOWNSHIP

WASHINGTON COUNTY

CONTRACT NO. AMD 63(0657)101.1

DRAWING INDEX

TITLE	DWG. NO.
TITLE SHEET	1 of 4
PLAN & LOCATION MAP	2 of 4
DETAILS	3 of 4
DETAILS	4 of 4

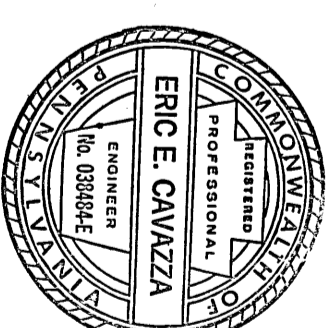
EDWARD G. RENDELL

GOVERNOR

KATHLEEN A. MCGINTY

SECRETARY

DEPARTMENT OF ENVIRONMENTAL PROTECTION



APPROVED

Eric E. Cavazza

ERIC E. CAVAZZA

DESIGN SECTION CHIEF - CAMBRIA OFFICE
DEPARTMENT OF ENVIRONMENTAL PROTECTION

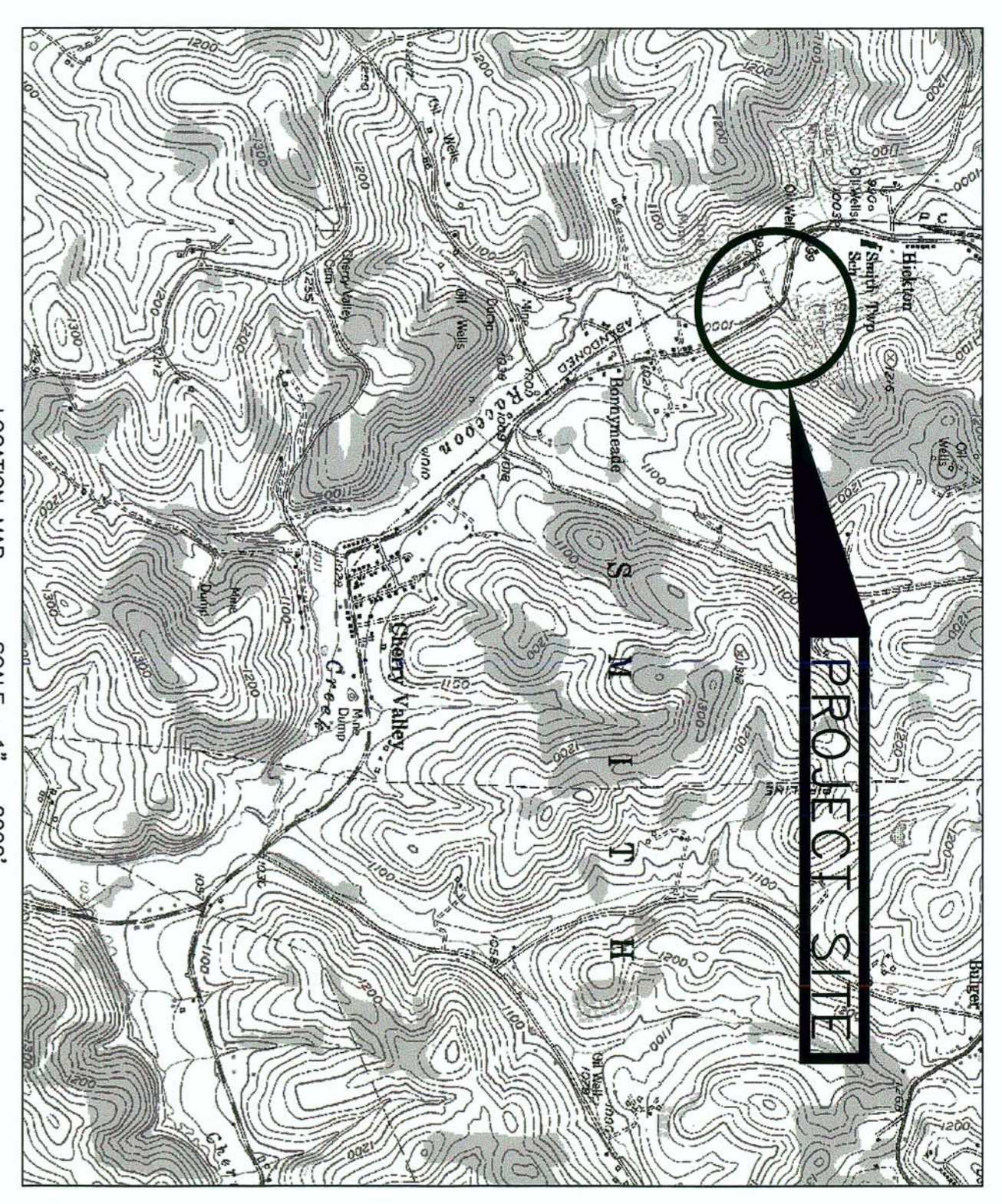
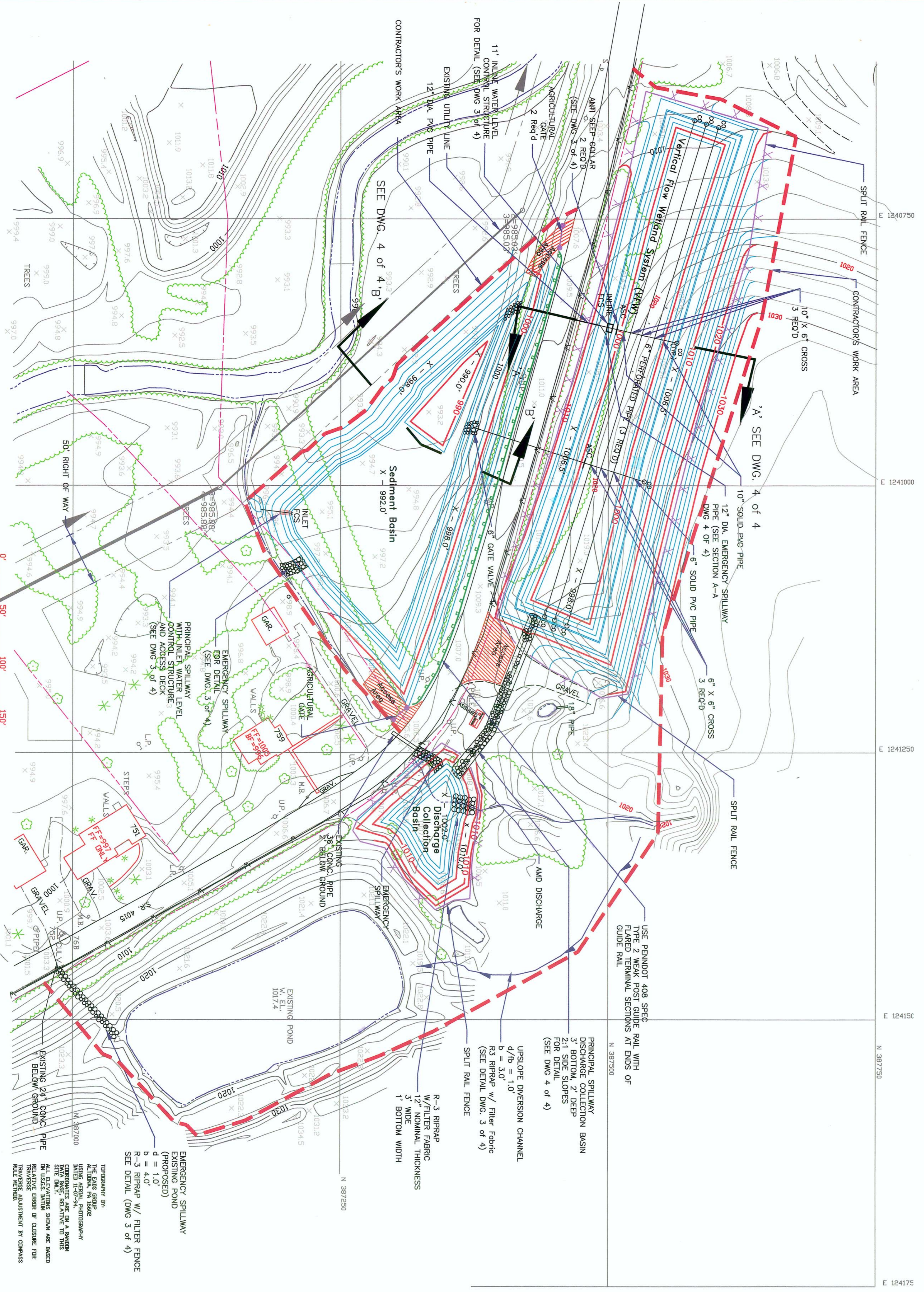
8/4/03
DATE

- LEGEND**
- RIPRAP SPILLWAY
 - ANTI-SLEEP COLLAR
 - FLOW CONTROL STRUCTURE
 -
 - UPSLOPE DIVERSION CHANNEL
 - GATE VALVE
 - CONTRACTOR'S WORK AREA
 - SPLIT RAIL FENCE
 - AGRICULTURAL GATE
 - GUIDE RAIL

- NOTES:**
1. FOR DETAILS SEE DWG. 3 & 4 OF 4.
 2. ELEVATION OF PONDS SEE TABLE 'A' (THIS DWG.)
 3. MINOR DIMENSIONS OR ADJUSTMENTS MAY BE NECESSARY TO SUIT FIELD CONDITIONS.

TABLE A

LOCATION	INVERT	TOP EMBANKMENT	INLET ELEV.	OUTLET ELEV.	COMMENT
Recharge Collection	1002.0'	1010.0'	1007.0'	1007.0'	Emergency Spillway Invert 1009.5'
Vertical Flow Inlet	998.0'	1008.5'	1005.0'	998.5'	Emergency Spillway Invert 1006.5'
Sediment Basin	992.0'	999.0'	986.5'	985.0'	Emergency Spillway Invert 987.0'



PENNSYLVANIA ONE CALL SYSTEM, INC.

STOP! CALL BEFORE YOU DIG.
BEFORE YOU DIG ANYWHERE IN PENNSYLVANIA! CALL 1-800-242-1776

NO.	DATE	REVISION	APPR.

DESIGNER: *[Signature]*
 RECOMMENDED BY: *[Signature]*
 DESIGN SECTION CHIEF - CIVIL OFFICE

DISTRICT MANAGER - WASHINGTON COUNTY CONSERVATION DISTRICT

ERIC E. CANIZZA
 PROFESSIONAL ENGINEER
 No. 008844

COMMONWEALTH OF PENNSYLVANIA
 DEPARTMENT OF ENVIRONMENTAL PROTECTION

CONTRACT NO. AMD 63(0657)101.1

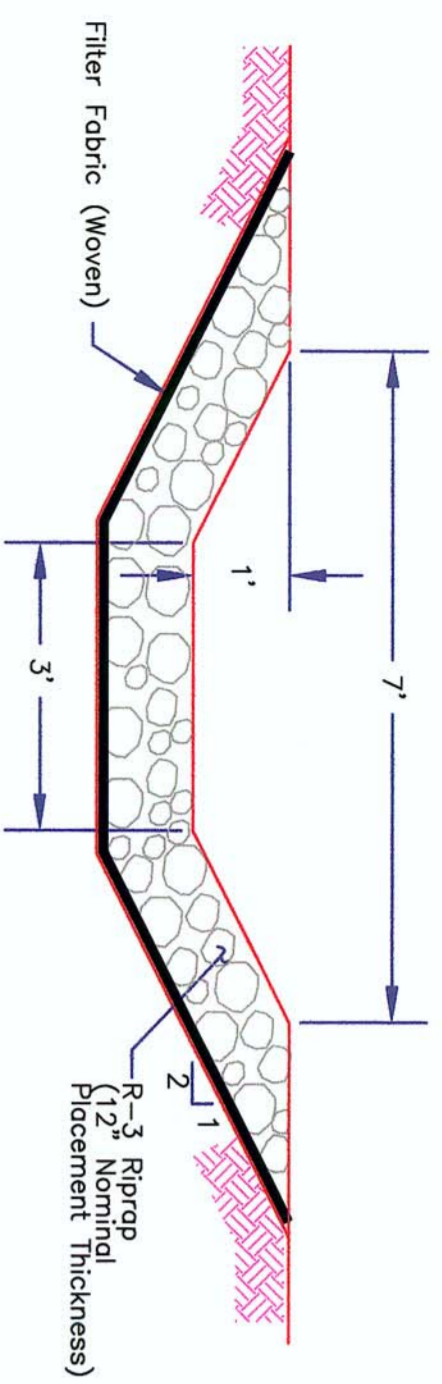
ACID MINE DRAINAGE TREATMENT PROJECT
 JB #2 SITE

SMITH TWP. WASHINGTON CO.

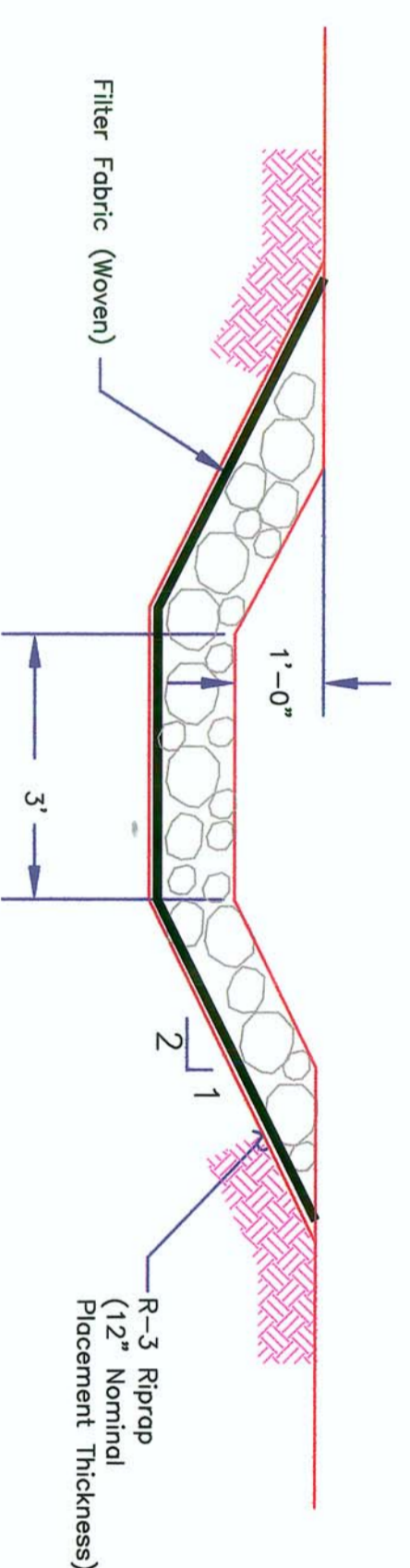
PLAN & LOCATION MAP

DATE: 08/05/03
 DRAWING NO. 2 OF 4

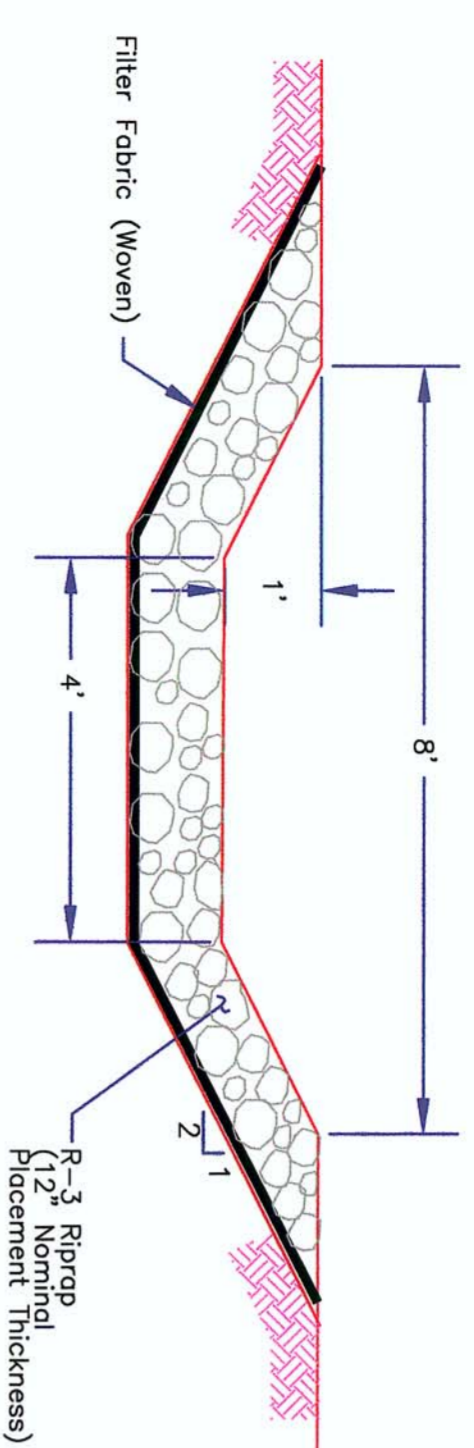
ALL DIMENSIONS AND POSITIONS SHOWN ON THIS DRAWING ARE BASED ON THE AS SHOWN CONDITIONS UNLESS OTHERWISE NOTED. THE CONTRACTOR SHALL BE RESPONSIBLE FOR VERIFYING ALL DIMENSIONS AND POSITIONS AT THE SITE.



EMERGENCY SPILLWAY
Scale: 1" = 2'-0"

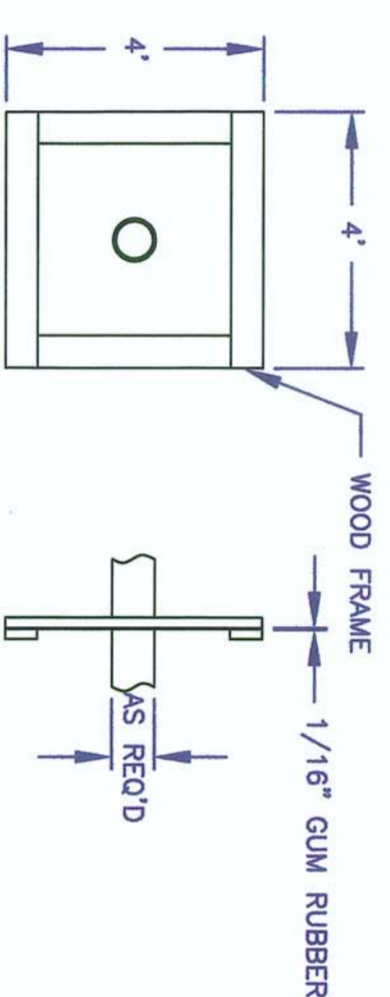


UPSLOPE DIVERSION CHANNEL DETAIL
Scale: 1" = 2'-0"



EMERGENCY SPILLWAY EXISTING POND
Scale: 1" = 2'-0"

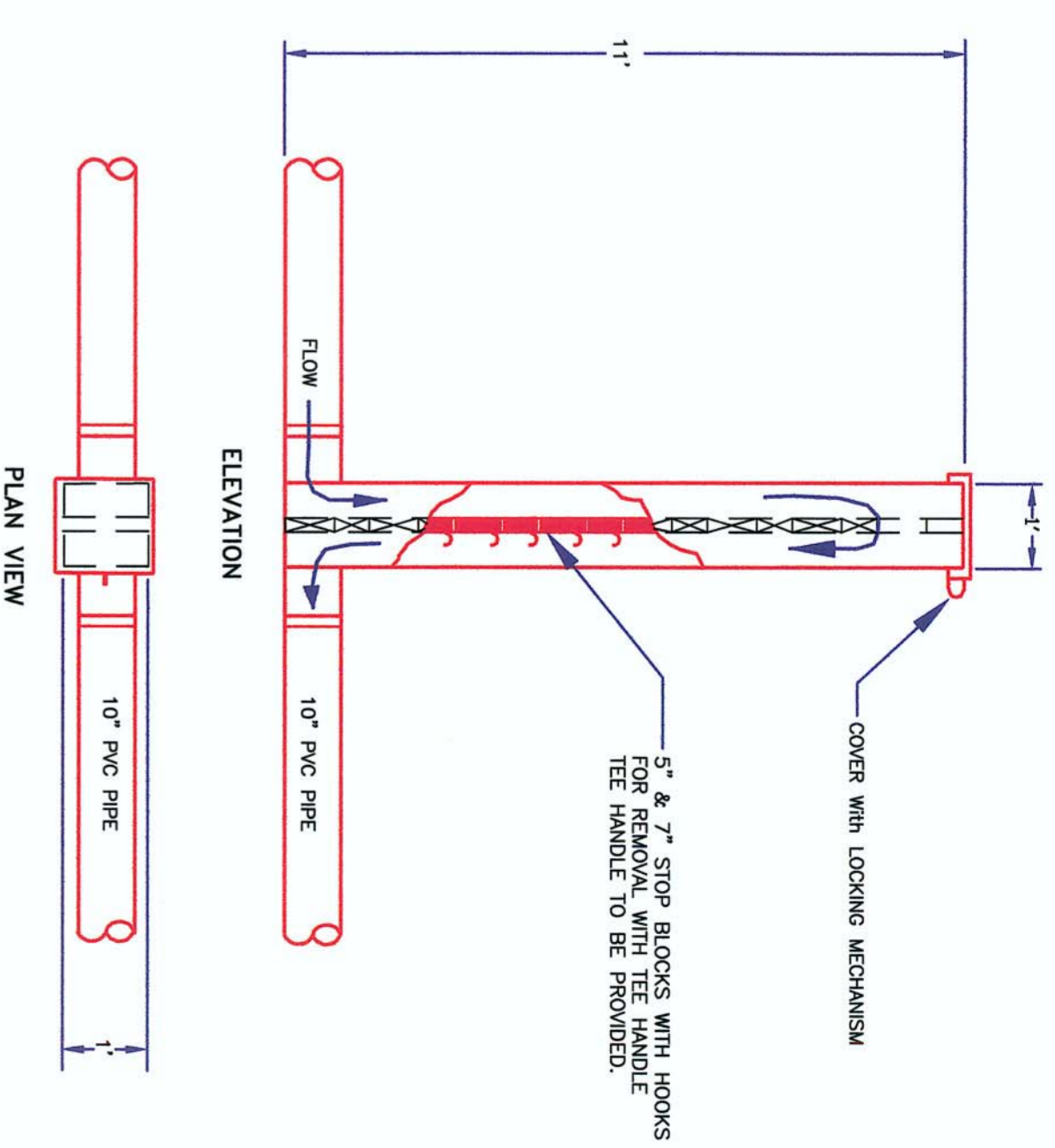
NOTE:
Agri Drain Corp.
Anti-Seep Collar
or Approved Equal.



ANTI-SEEP COLLAR (ASCD) TYPICAL
Scale: 1" = 3'

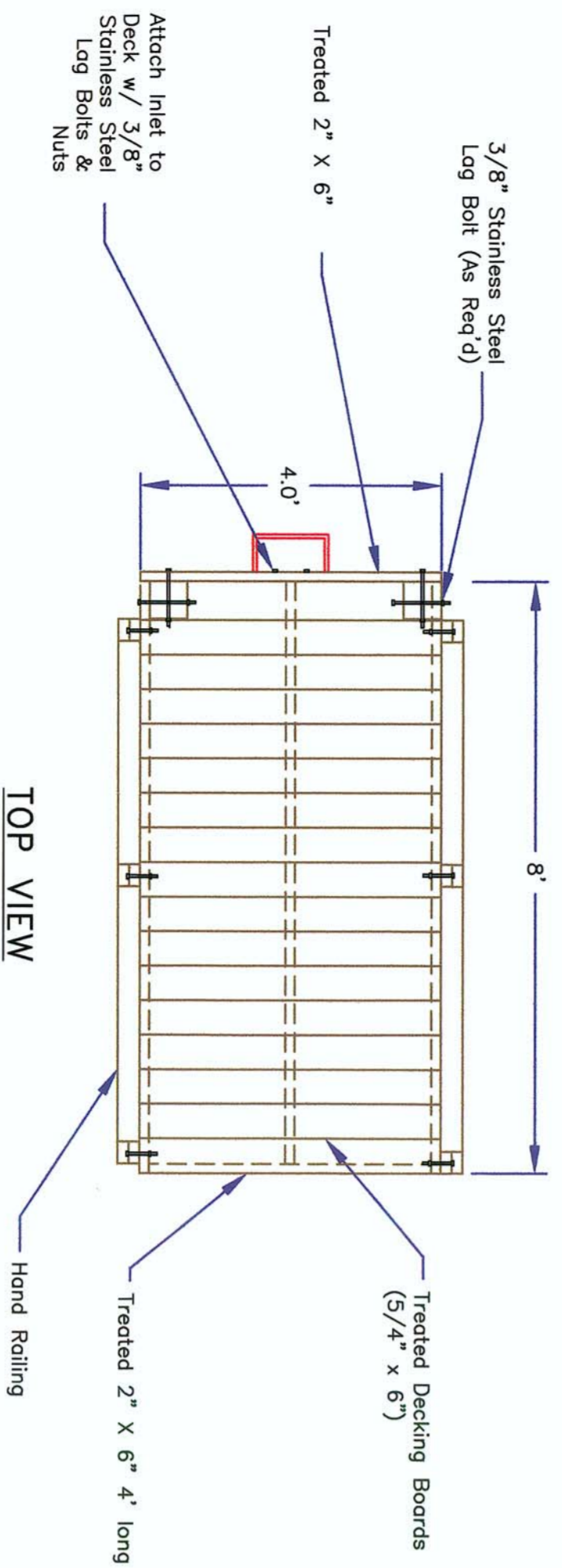
- NOTES:
- Contractor Shall Exercise Careful Backfilling Techniques During the Installation of the In-Line Water Level Control Structures.
 - Contractor Shall Install the Structures According to Manufacturer's Recommendations.

Agri Drain - 10" PVC INLINE STOP LOG
STRUCTURE or Approved Equal.

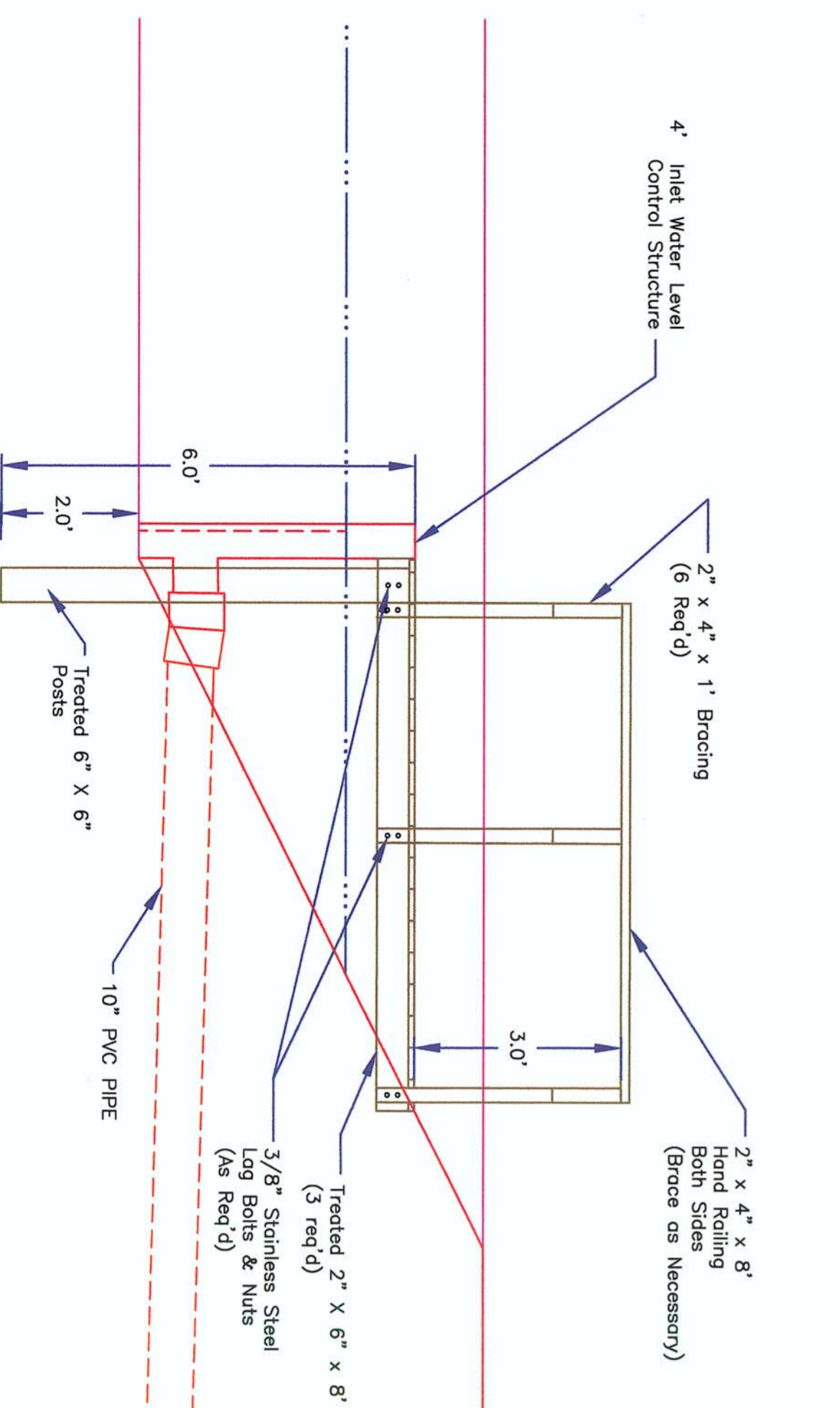


INLINE WATER LEVEL CONTROL STRUCTURE
Scale: NONE

NOTE:
All Dimensions
are Nominal.

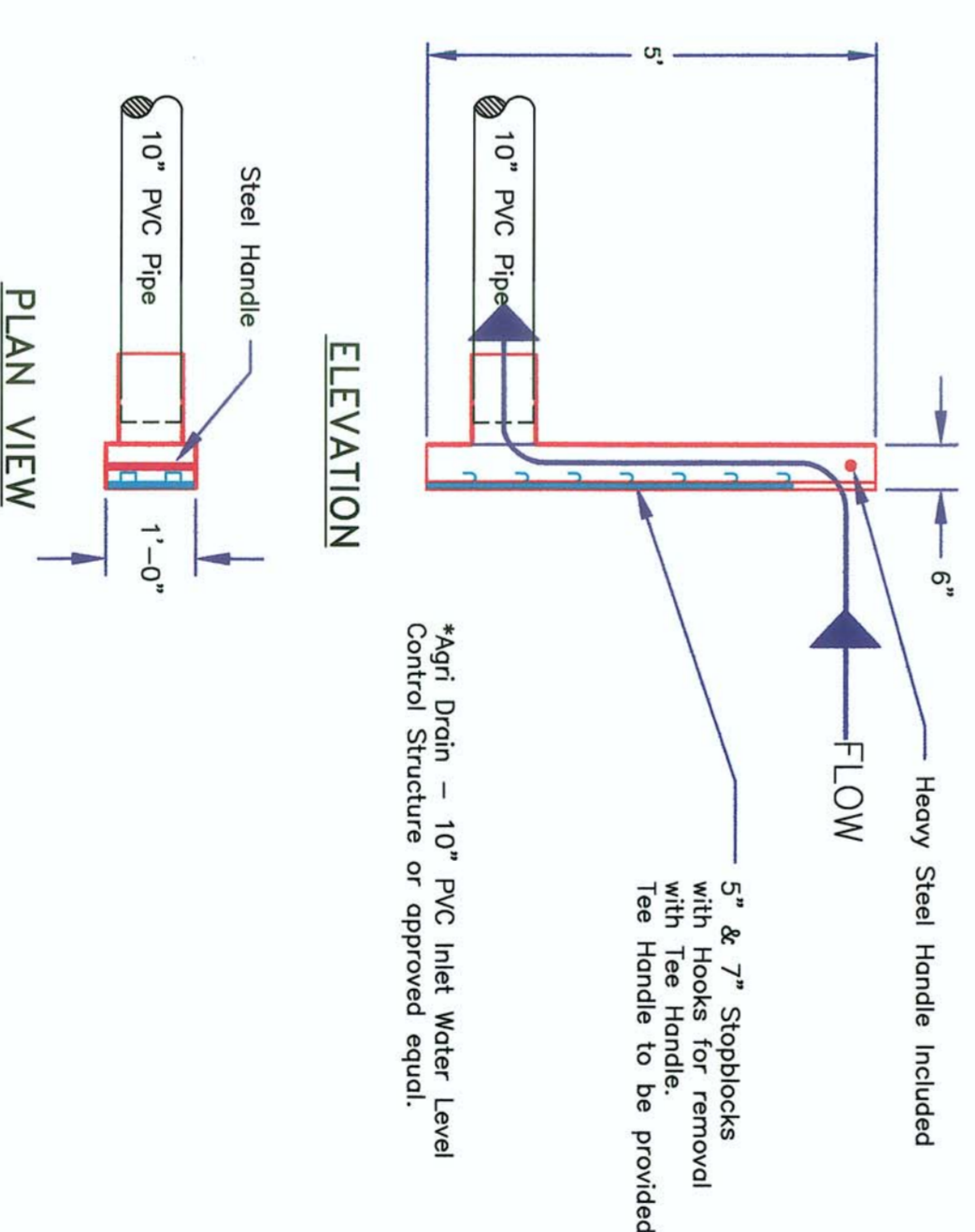


TOP VIEW

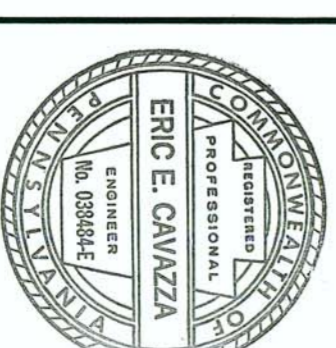


DECK DETAIL
Scale 1" = 2'

- NOTES:
- Contractor shall exercise careful backfilling techniques during the installation of the Inlet Level Control Structures.
 - Contractor shall install the structures according to manufacturer's recommendations.



***INLET WATER LEVEL CONTROL STRUCTURE**
Scale: None



COMMONWEALTH OF PENNSYLVANIA
DEPARTMENT OF ENVIRONMENTAL PROTECTION

CONTRACT NO. AMD 63(0657)101.1

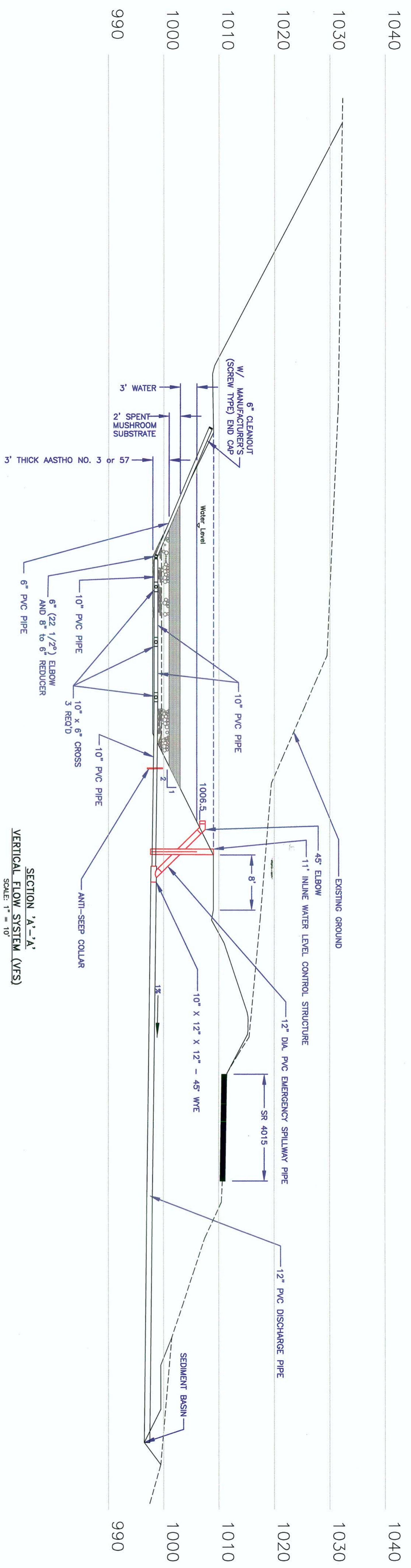
ACID MINE DRAINAGE ABATEMENT PROJECT

JB # 2 SITE

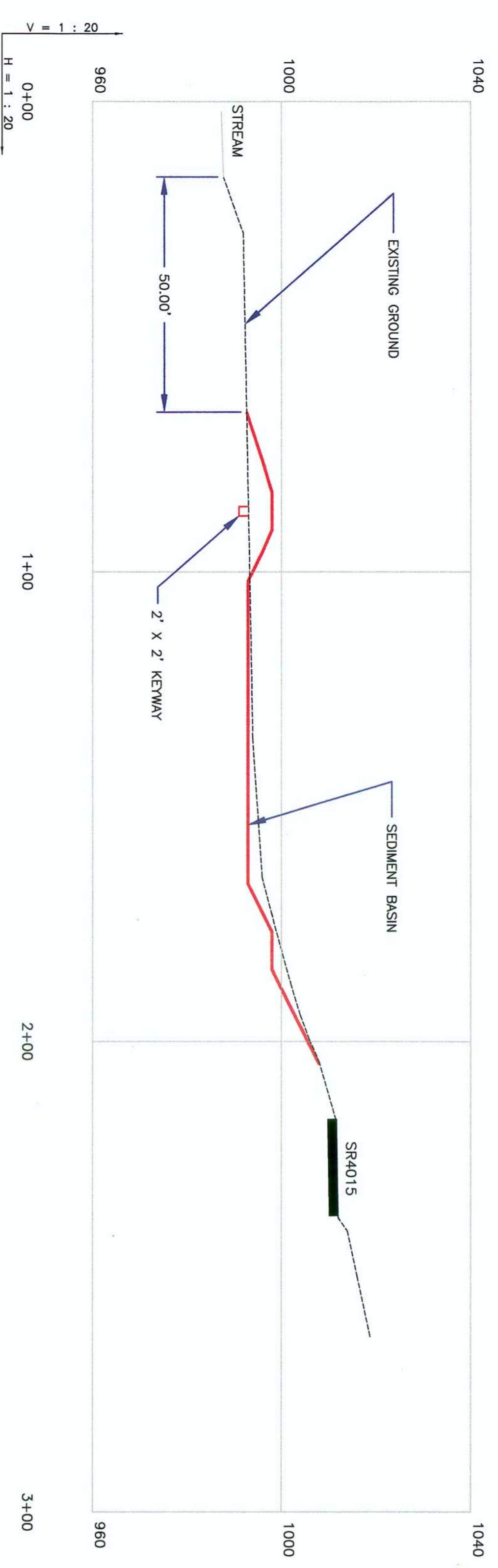
SMITH TWP. WASHINGTON COUNTY

DETAILS

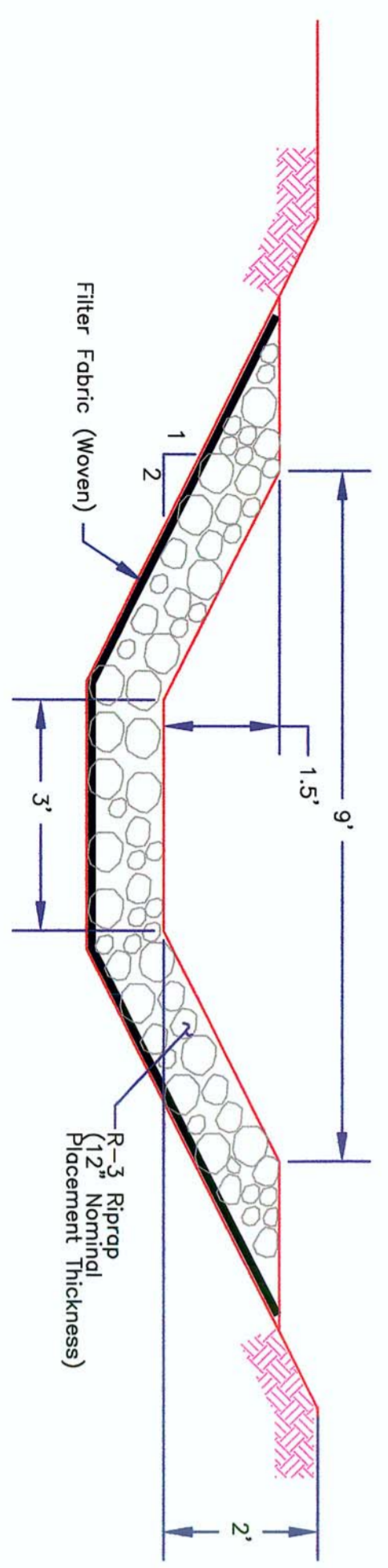
DRAWN BY: FCTJ	DATE: 07/01/03	DRAWING NO:
CHECKED BY: DS	SCALE: AS SHOWN	3 of 4



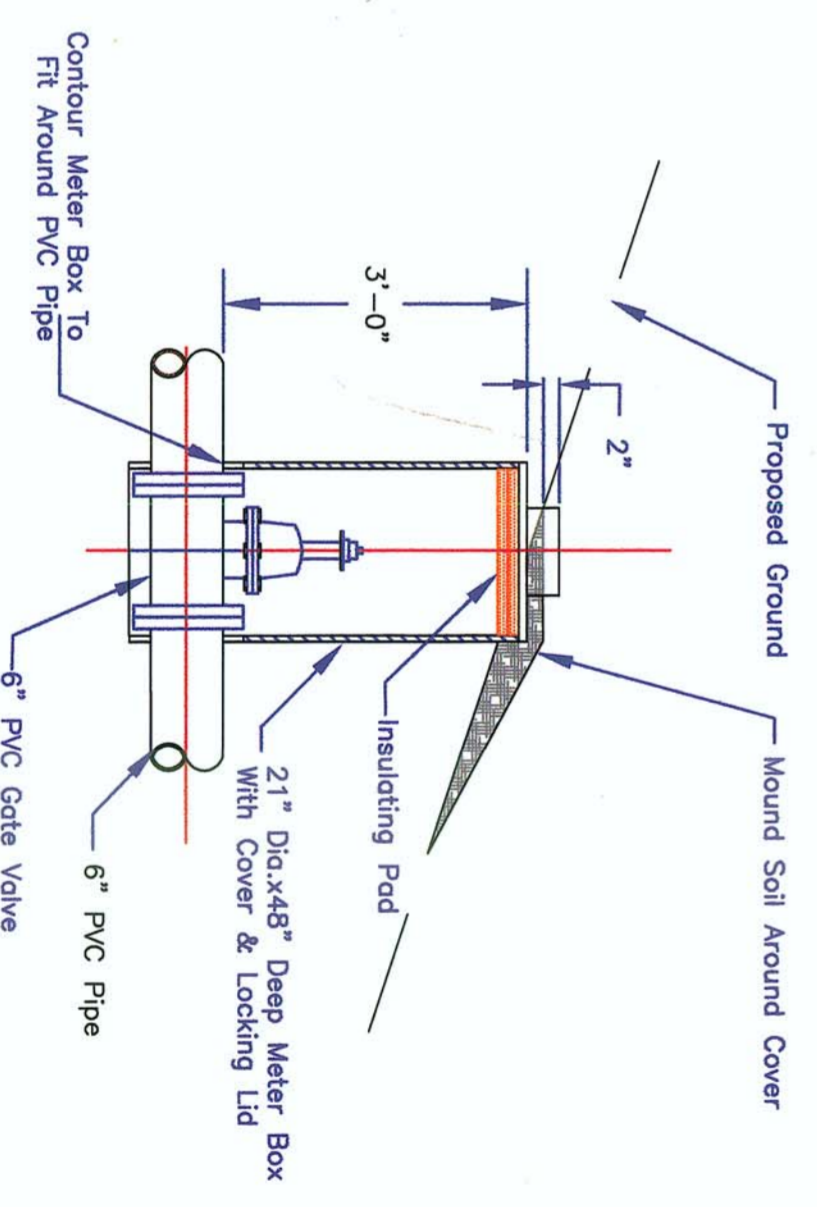
SECTION "A-A"
VERTICAL FLOW SYSTEM (VFS)
SCALE: 1" = 10'



SECTION "B-B"
SCALE: 1" = 20' H & V



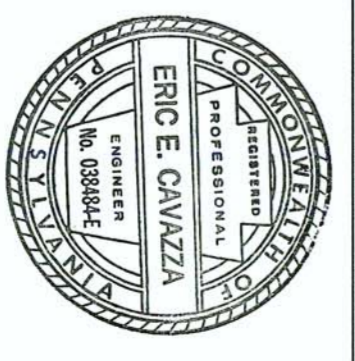
PRINCIPAL SPILLWAY
DISCHARGE COLLECTION BASIN
Scale: 1" = 2'-0"



6" PVC GATE VALVE & METER BOX
SCALE: 1" = 1'

NO.	DATE	REVISION	APPR.

DESIGNER: *[Signature]*
 REVISIONS: *[Signature]*
 DESIGN SECTION CHIEF - OAKRIDGE OFFICE
 APPROVED: *[Signature]*
 DISTRICT MANAGER - WASHINGTON COUNTY CONSERVATION DISTRICT



COMMONWEALTH OF PENNSYLVANIA
 DEPARTMENT OF ENVIRONMENTAL PROTECTION
 CONTRACT NO. AMD 63(0657)101.1

ACID MINE DRAINAGE TREATMENT PROJECT
 JB #2 SITE

SMITH TWP. WASHINGTON CO.
 DETAILS

DRAWN BY: RCN DATE: 08/03/03 DRAWING NO.:
 CHECKED BY: KAO SCALE: AS SHOWN 4 OF 4
 K3(0657)-03.DWG

ALL DIMENSIONS AND EXISTING CONDITIONS TO BE VERIFIED BY CONTRACTOR AT THE SITE