
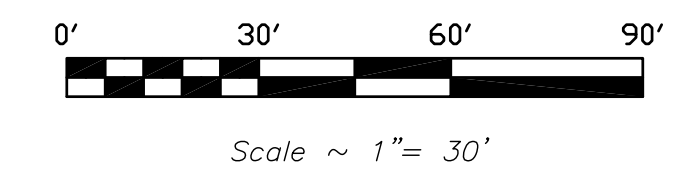


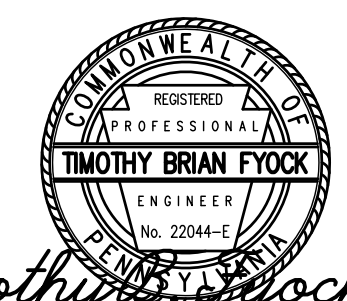
LEGEND

- 1' CONTOURS
- 2210— 5' CONTOURS
- 2:1 SLOPE (H:V)
- ACTUAL 24" PIPE LOCATIONS
-  RIP RAP
- GRAVEL ACCESS ROAD



Tributary Channel Restoration

REVISION	DESCRIPTION
11/12/08	REVISION TO CCWA COMMENTS



Timothy Brian Flock P.E.

Benchmark Engineering
& construction co., inc.
 "A STANDARD BY WHICH OTHERS ARE MEASURED"
 PO BOX 53, ROUTE 30, LAUGHLINTOWN PA 15655-0053
 Phone: (724) 238-2955 Fax: (724) 238-5242

AS-BUILT FOR KLONDIKE TRIBUTARY CHANNEL RESTORATION				
DRAWN BY	C.J.M.	F.B. 197	DATE	DWG. NO.
CHECKED BY	T.B.F.	Pg. 68	2/27/08	3 of 4