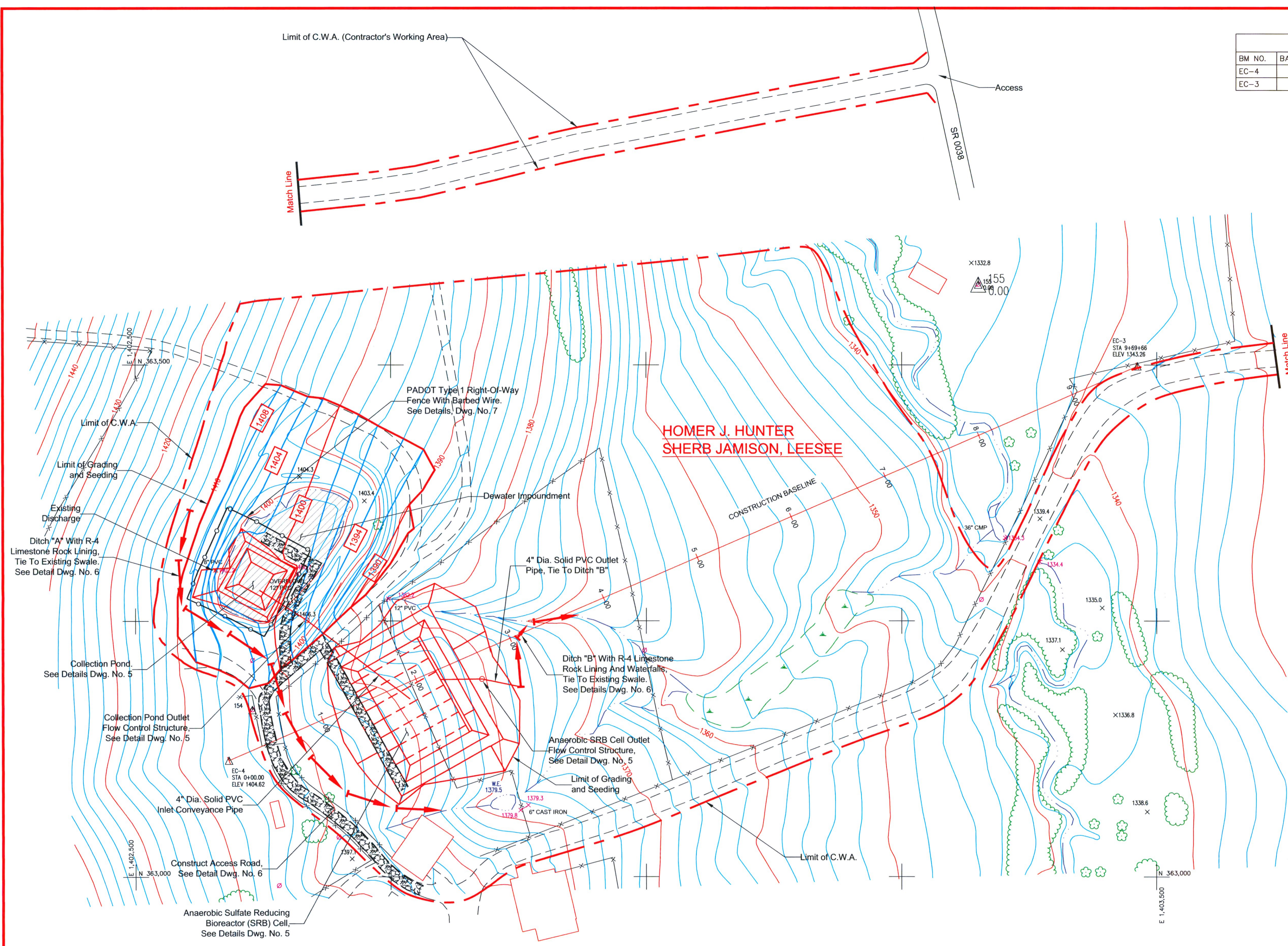
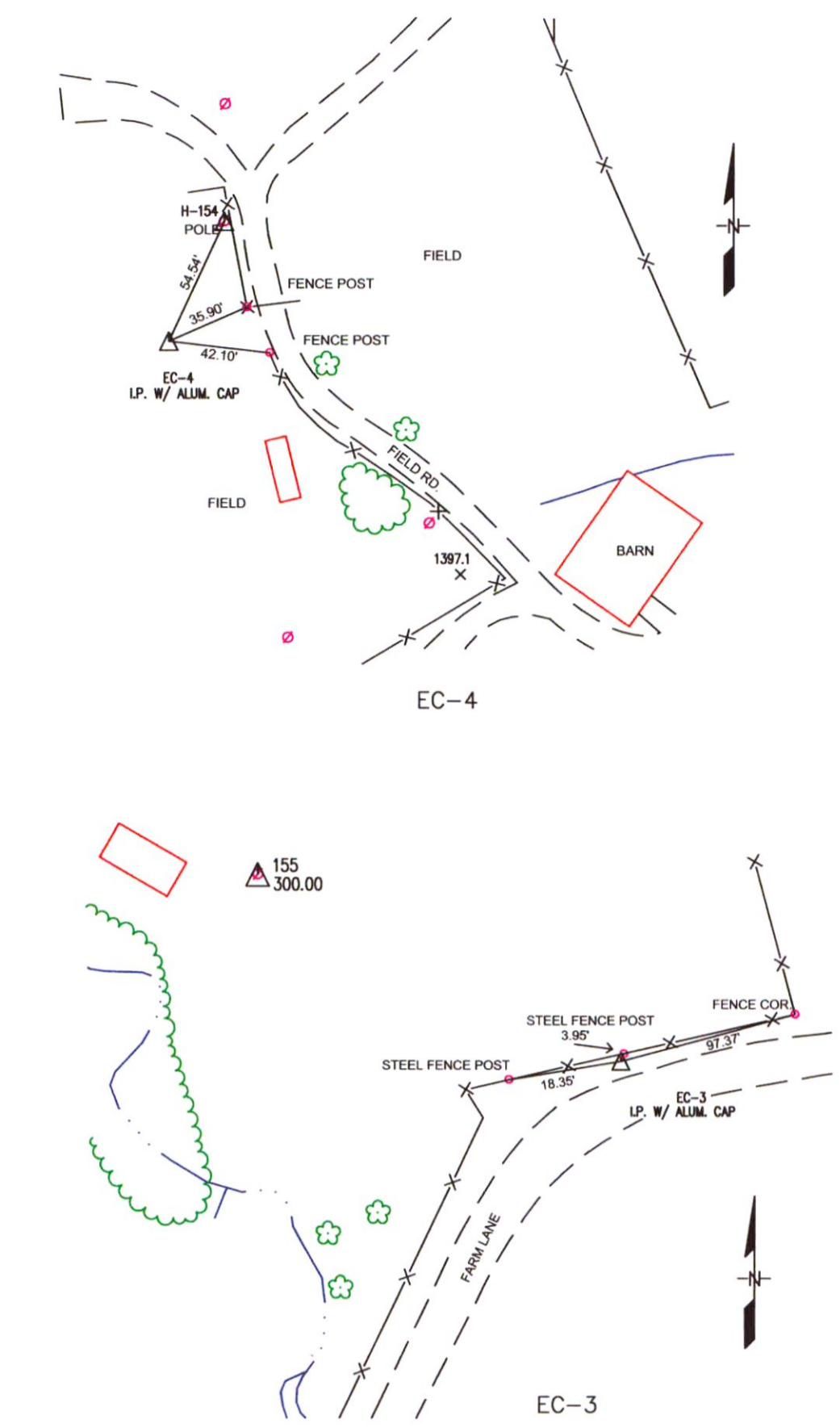


Limit of C.W.A. (Contractor's Working Area)

Access

BENCH MARK DATA					
BM NO.	BASELINE STA.	ELEVATION	DESCRIPTION	N. COORDINATE	E. COORDINATE
EC-4	00+00.00	1404.62	IRON PIN AND CAP	363113.881	1402591.047
EC-3	6+69+66	1343.26	IRON PIN AND CAP	363498.825	1403481.024

CONSTRUCTION BASELINE DATA



PADOT Type 1 Right-Of-Way Fence With Barbed Wire. See Details, Dwg. No. 7

Dewater Impoundment

4" Dia. Solid PVC Outlet Pipe, Tie To Ditch "B"

Ditch "B" With R-4 Limestone Rock Lining And Waterfalls, Tie To Existing Swale. See Details Dwg. No. 6

Anaerobic SRB Cell Outlet Flow Control Structure, See Detail Dwg. No. 5

Limit of Grading and Seeding

Limit of C.W.A.

4" Dia. Solid PVC Inlet Conveyance Pipe

Construct Access Road, See Detail Dwg. No. 6

Anaerobic Sulfate Reducing Bioreactor (SRB) Cell, See Details Dwg. No. 5

Collection Pond, See Details Dwg. No. 5

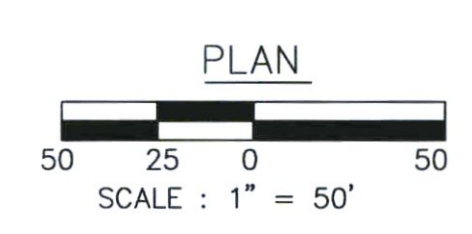
Collection Pond Outlet Flow Control Structure, See Detail Dwg. No. 5

Existing Discharge

Ditch "A" With R-4 Limestone Rock Lining, Tie To Existing Swale. See Detail Dwg. No. 6

HOMER J. HUNTER
SHERB JAMISON, LEESEE

CONSTRUCTION BASELINE



TOPOGRAPHY BY:
BARTON AERIAL TECHNOLOGIES, INC.
COLUMBUS, OHIO 43229

USING AERIAL PHOTOGRAPHY
DATED 10-24-94

COORDINATES ARE BASED ON
NAD 1983 ADJUSTMENT PA NORTH ZONE.

ALL ELEVATIONS SHOWN ARE BASED
ON NAVD 1929.

ALL DIMENSIONS AND EXISTING
CONDITIONS SHALL BE CHECKED
AND VERIFIED BY CONTRACTOR
AT THE SITE.

NO.	DATE	REVISION	APPR.

SUBMITTED: _____
PROJECT ENGINEER

RECOMMENDED: _____
PROJECT COORDINATOR

APPROVED: _____
CHIEF - DIVISION OF ACID MINE DRAINAGE ABATEMENT

COMMONWEALTH OF PENNSYLVANIA
DEPARTMENT OF ENVIRONMENTAL PROTECTION

CONTRACT NO. BF 467-101.1

ABANDONED MINE LAND
RECLAMATION PROJECT
PENGROVE COAL (BEAN)
MINING PERMIT NO. 10800112-01-0(c)
CHERRY VALLEY BORO BUTLER COUNTY

PLAN		
DRAWN BY	DATE	DRAWING NO.
CHECKED BY	SCALE	AS SHOWN
		3 OF