

POINT	EASTING	NORTHING	LATITUDE	LONGITUDE
1	1374921.5088	676802.4966	41d0m16.43870s	79d54m21.98135s
2	1374768.5818	676722.1273	41d0m15.65623s	79d54m21.34039s
3	1374684.8286	676276.0635	41d0m11.82006s	79d54m24.90689s
4	1374533.8193	676241.0323	41d0m10.79956s	79d54m26.8685s
5	134446.0141	676289.4661	41d0m11.25675s	79d54m28.03233s
6	1374398.8673	676287.1929	41d0m11.02489s	79d54m28.68872s
7	1374423.2141	676074.1014	41d0m09.12498s	79d54m28.26206s
8	1374388.6728	676008.4884	41d0m08.46789s	79d54m28.89259s
9	1374303.6799	675990.7481	41d0m08.27195s	79d54m29.97868s
10	1374267.9868	675921.3374	41d0m07.57776s	79d54m30.24229s
11	1374262.5821	675919.7514	41d0m07.56079s	79d54m30.3223s
12	1374182.4119	675907.6969	41d0m07.35333s	79d54m31.35416s
13	1374182.4119	675987.5987	41d0m08.21156s	79d54m31.8194s
14	1374051.1586	675964.1054	41d0m08.14536s	79d54m33.09642s
15	1374052.4760	676051.9305	41d0m08.81588s	79d54m33.10088s
16	1374096.4707	676116.3166	41d0m09.46143s	79d54m32.58922s
17	1374068.5818	676152.9295	41d0m09.81704s	79d54m32.92255s
18	1374004.4688	676134.7061	41d0m09.82195s	79d54m33.75484s
19	1373963.9896	676121.1273	41d0m09.98139s	79d54m34.25911s
20	1374096.7953	676279.5303	41d0m11.07429s	79d54m32.9433s
21	1374357.8466	676351.3466	41d0m11.86688s	79d54m29.20505s
22	1374373.3246	676314.3926	41d0m11.48549s	79d54m28.8093s
23	1374398.0720	676306.8215	41d0m11.41639s	79d54m28.86594s
24	1374448.7099	676323.8314	41d0m11.58682s	79d54m28.00889s
25	1374457.3825	676347.7796	41d0m11.83545s	79d54m27.92086s
26	1374454.8506	676371.0494	41d0m12.06488s	79d54m27.84338s
27	1374445.4863	676402.6933	41d0m12.37497s	79d54m28.07590s
28	1374566.4700	676479.4676	41d0m13.13922s	79d54m27.95886s
29	1374579.3099	676594.4845	41d0m14.30159s	79d54m26.38723s
30	1374418.4133	676655.9233	41d0m14.83995s	79d54m28.9972s
31	1374418.4133	676685.6653	41d0m15.82218s	79d54m28.52328s
32	1374577.7370	676656.7133	41d0m14.90579s	79d54m26.42894s
33	1374761.9036	676802.4966	41d0m16.40020s	79d54m24.06761s

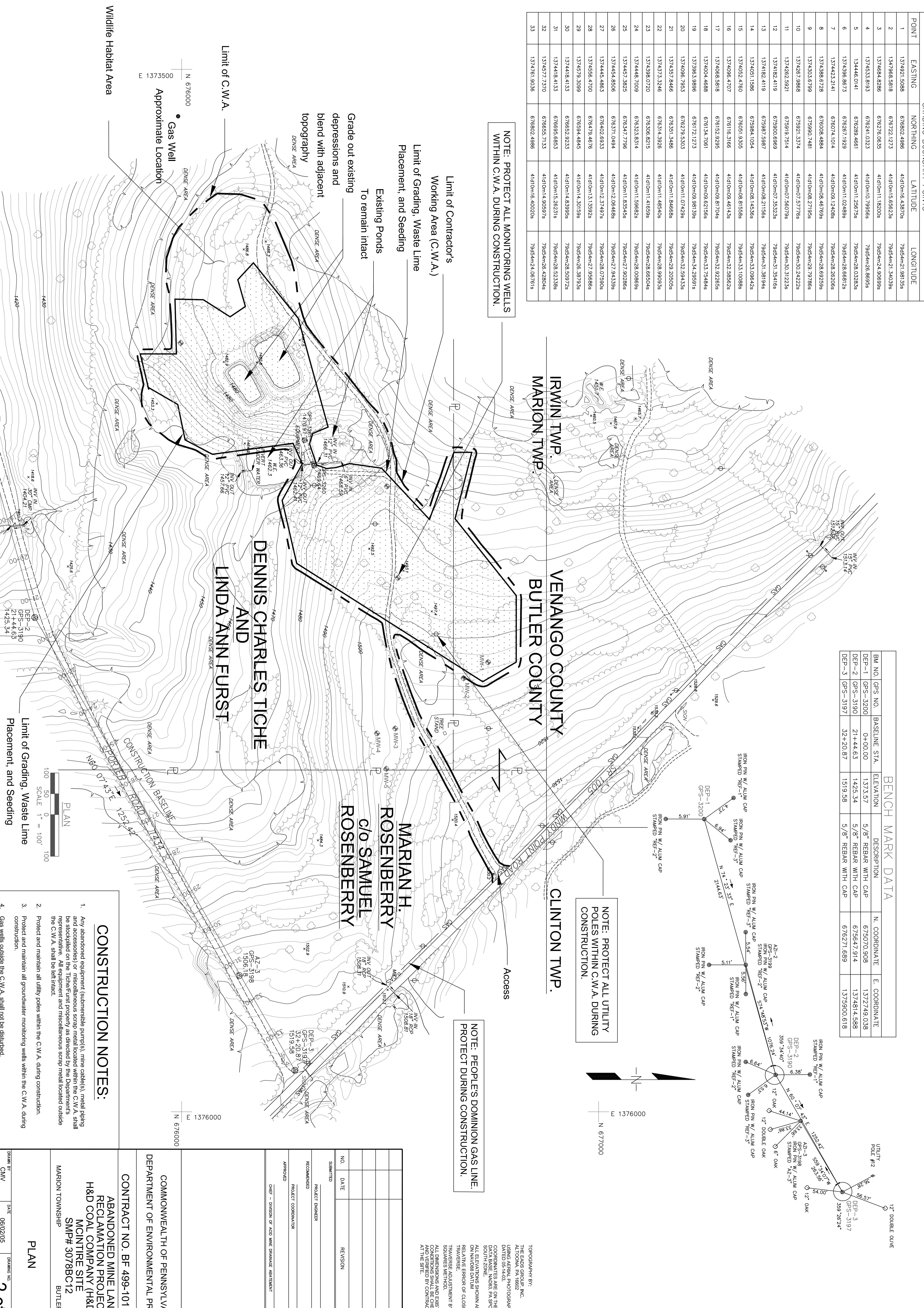
NOTE: PROTECT ALL MONITORING WELLS WITHIN C.W.A. DURING CONSTRUCTION.

BM NO.	GPS NO.	BASELINE STA.	ELEVATION	N. COORDINATE	E. COORDINATE
DEP-1	GPS-3200	0+00.00	1373.57	675070.908	1372749.038
DEP-2	GPS-3190	21+44.63	1425.34	675647.914	1374814.588
DEP-3	GPS-3197	32+20.87	1519.58	676271.689	1375900.618

NOTE: PROTECT ALL UTILITY POLES WITHIN C.W.A. DURING CONSTRUCTION.

NOTE: PEOPLES DOMINION GAS LINE. PROTECT DURING CONSTRUCTION.

TOPOGRAPHY BY:  
THE EARS GROUP, INC.  
ALTOONA, PA 16602  
DATE: 08/11/10  
DRAWING NO. 2010-0001  
COORDINATES ARE ON THE NAD83 DATA BASE. NAD83 PA SFC SOUTH ZONE.  
ON ALL ELEVATIONS SHOWN ARE BASED ON THE DATUM OF MEANS AND THE RELATIVE ERROR OF CLOSURE FOR TRAVERSE.  
TRAVERSE ADJUSTMENT BY LEAST SQUARES METHOD.  
ALL DIMENSIONS AND EXISTING CONDITIONS SHOWN ARE AS SURVEYED AND VERIFIED BY CONTRACTOR AT THE SITE.



**CONSTRUCTION NOTES:**

- Any abandoned equipment (submersible pump(s), mine cable(s), metal piping and accessories) or miscellaneous scrap metal located within the C.W.A. shall be removed and disposed of in accordance with the DEP rules and regulations. All equipment and miscellaneous scrap metal located outside the C.W.A. shall be left intact.
- Protect and maintain all utility poles within the C.W.A. during construction.
- Protect and maintain all groundwater monitoring wells within the C.W.A. during construction.
- Gas wells outside the C.W.A. shall not be disturbed.

COMMONWEALTH OF PENNSYLVANIA DEPARTMENT OF ENVIRONMENTAL PROTECTION	
CONTRACT NO. BF 499-101.1	
ABANDONED MINE LAND RECLAMATION PROJECT H&D COAL COMPANY (H&D #8) MCINTIRE SITE SMP# 3078BC12	
MARION TOWNSHIP	BUTLER COUNTY
PLAN	
DRAWN BY: CMV	DATE: 08/02/05
CHECKED BY: AS SHOWN	DRAWING NO.:
	2 of 2