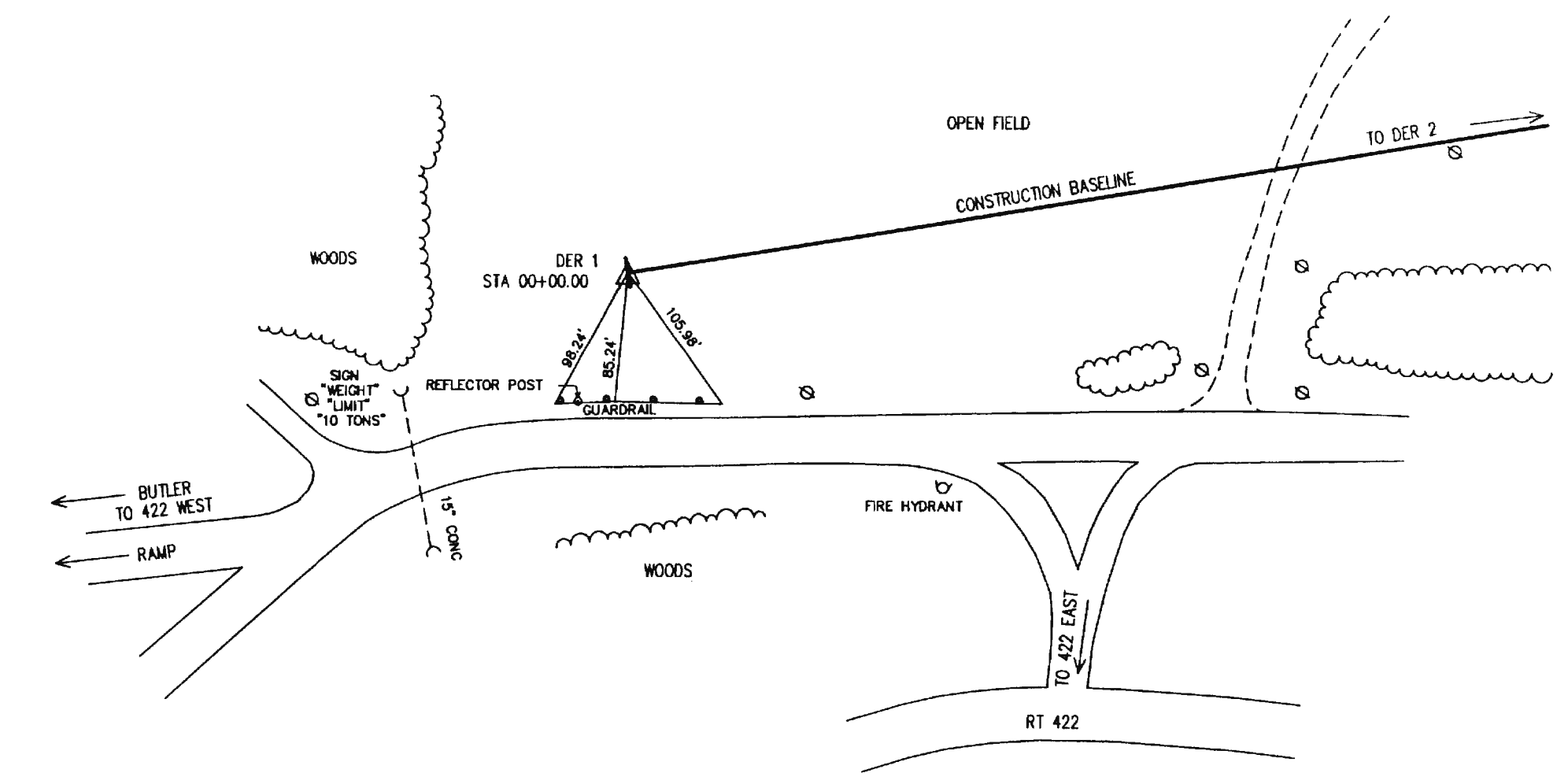


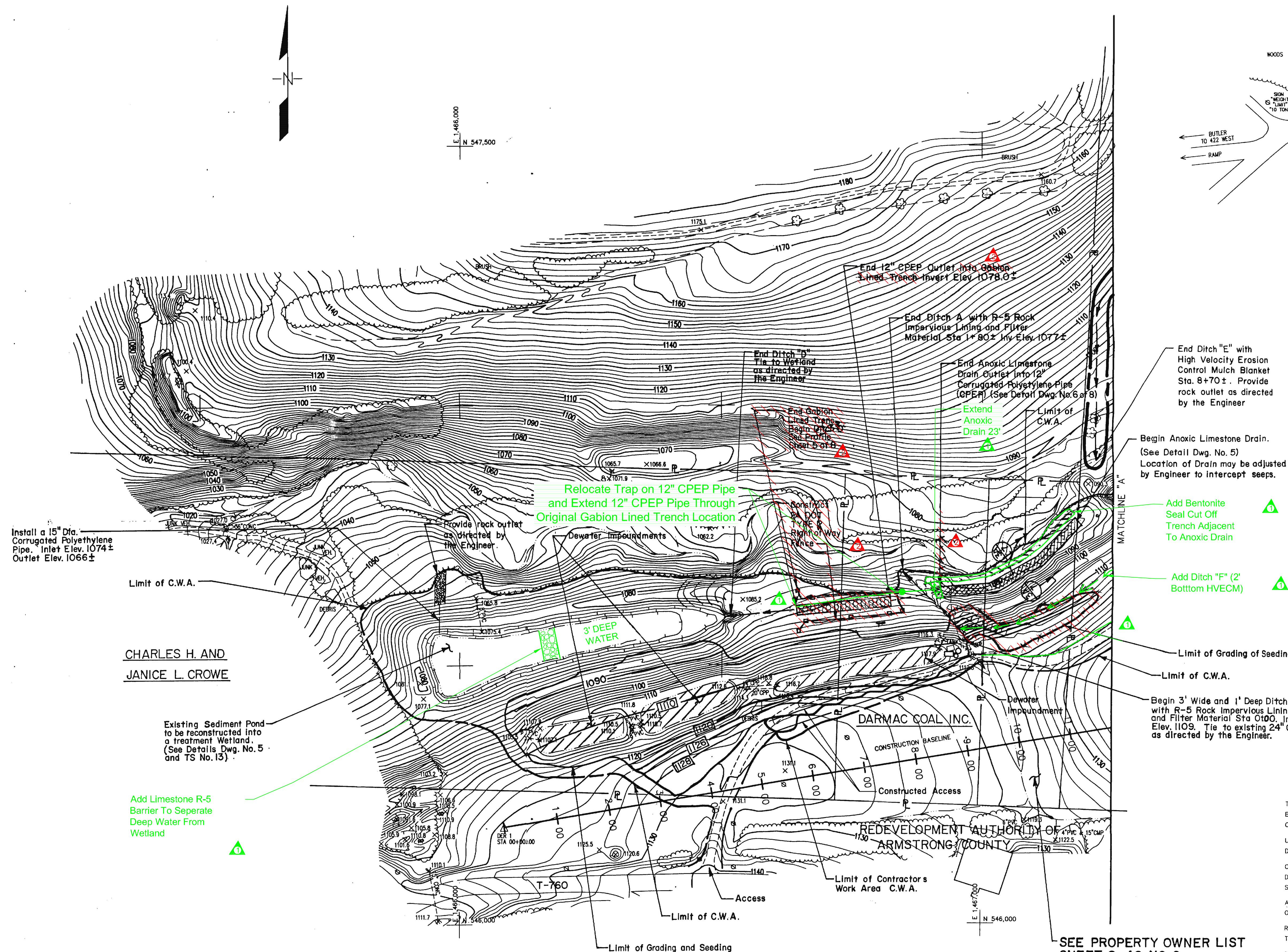
BENCH MARK DATA					
BM NO.	BASELINE STA.	ELEVATION	DESCRIPTION	N. COORDINATE	E. COORDINATE
DER 1	00+00.00	1120.71	IRON PIN AND CAP	546188.039	1466086.211
DER 2	18+03.12	1167.630	IRON PIN AND CAP	546479.414	1467865.635

CONSTRUCTION BASELINE DATA



NOTES:

- All sedimentation pond drainage pipes within the grading areas and as specified on the drawings shall be removed and stockpiled outside the grading areas but within the Contractor's Work Area.
- During Construction protect all utility poles within the Contractor's Work Area.
- All abandoned equipment within the Contractor's Work Area shall be removed and disposed of by the Contractor.



End Ditch "E" with High Velocity Erosion Control Mulch Blanket Sta. 8+70 ±. Provide rock outlet as directed by the Engineer

Begin Anoxic Limestone Drain. (See Detail Dwg. No. 5) Location of Drain may be adjusted by Engineer to intercept seeps.

Add Bentonite Seal Cut Off Trench Adjacent To Anoxic Drain

Add Ditch "F" (2' Bottom HVECM)

Limit of Grading of Seeding

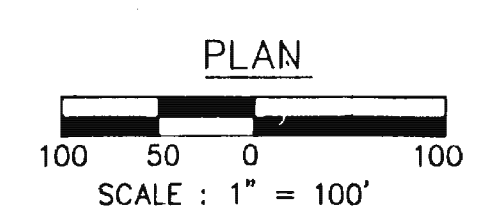
Limit of C.W.A.

Begin 3' Wide and 1' Deep Ditch A with R-5 Rock Impervious Lining and Filter Material Sta 0+00, Invert Elev. 1109. Tie to existing 24" CMP as directed by the Engineer.

CHARLES H. AND JANICE L. CROWE

Add Limestone R-5 Barrier To Separate Deep Water From Wetland

Existing Sediment Pond to be reconstructed into a treatment Wetland. (See Details Dwg. No. 5 and TS No. 13)



SEE PROPERTY OWNER LIST SHEET 2 of 8 NO. 6

TOPOGRAPHY BY:
BARTON AERIAL TECHNOLOGIES, INC.
COLUMBUS, OHIO 43229

USING AERIAL PHOTOGRAPHY DATED 4-26-95.

COORDINATES ARE ON A RANDOM DATA BASE, RELATIVE TO THIS SITE ONLY.

ALL ELEVATIONS SHOWN ARE BASED ON U.S.G.S. DATUM

RELATIVE ERROR OF CLOSURE FOR TRAVERSE

TRAVERSE ADJUSTMENT BY COMPASS RULE METHOD.

ALL DIMENSIONS AND EXISTING CONDITIONS SHALL BE CHECKED AND VERIFIED BY CONTRACTOR AT THE SITE.

NO.	DATE	REVISION	APPR.
1	12/21/00	"AS-BUILT" DELETIONS	J.R.S.
2	12/21/00	"AS-BUILT" ADDITIONS	J.R.S.

SUBMITTED: *[Signature]*
PROJECT ENGINEER

RECOMMENDED: *[Signature]*
PROJECT COORDINATOR

APPROVED: *[Signature]*
CHIEF - DIVISION OF ACID MINE DRAINAGE ABATEMENT



COMMONWEALTH OF PENNSYLVANIA
DEPARTMENT OF ENVIRONMENTAL PROTECTION

CONTRACT NO. BF 389-101.1

ABANDONED MINE LAND RECLAMATION PROJECT
DARMAC COAL, INC.
DARMAC 14 SITE
SMP 03840112
EAST FRANKLIN TOWNSHIP ARMSTRONG COUNTY

PLAN

DRAWN BY: LFK	DATE: 9-23-97	DRAWING NO.:
CHECKED BY: JIS	SCALE: 1"=100'	3 of 8