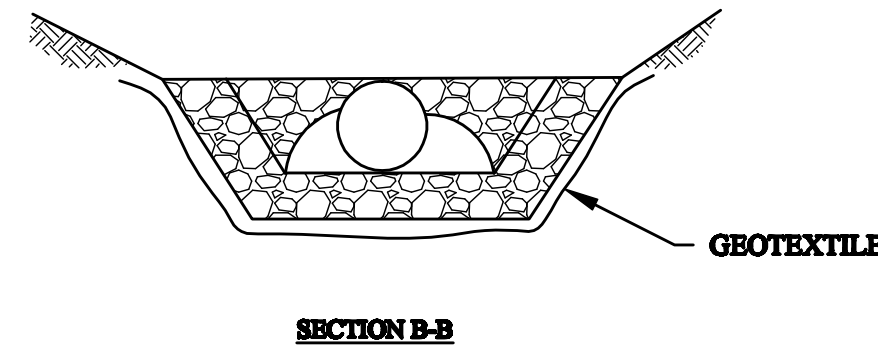
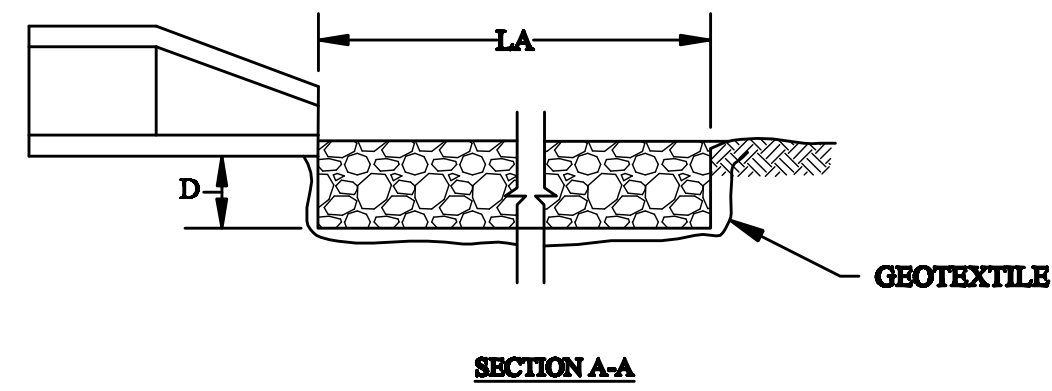
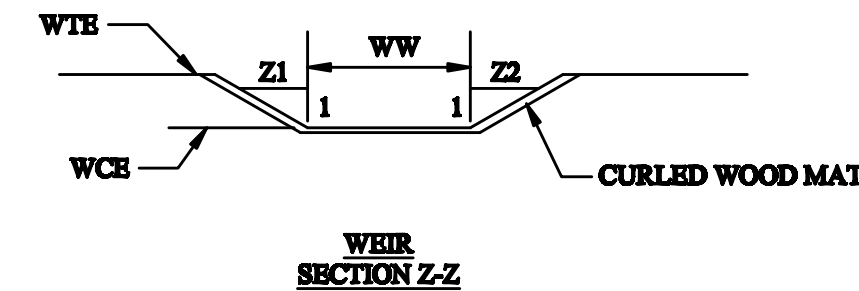


OUTLET NO.	PIPE DIA Pd (IN)	RIPRAP			APRON	
		SIZE (R-)	THICK D (IN)	LENGTH LA (FT)	INITIAL WIDTH 3DO (FT)	TERMINAL WIDTH W (FT)
PIPE B	8	4	18	*	3	6
PIPE C & D	8	4	18	*	6	12

*EXTEND TO TOE OF SLOPE

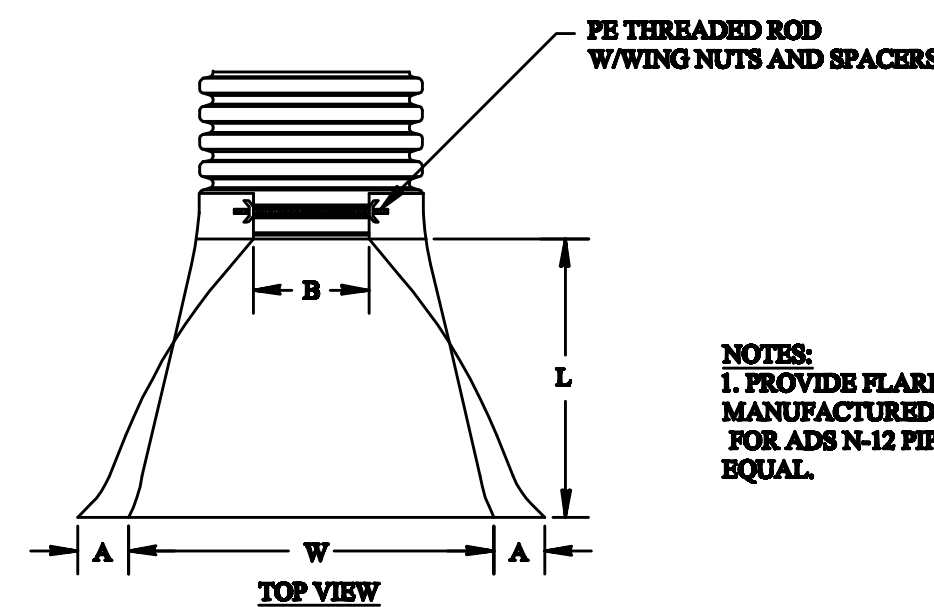


1 ROCK APRON DETAIL 1
C-5 SCALE: NONE

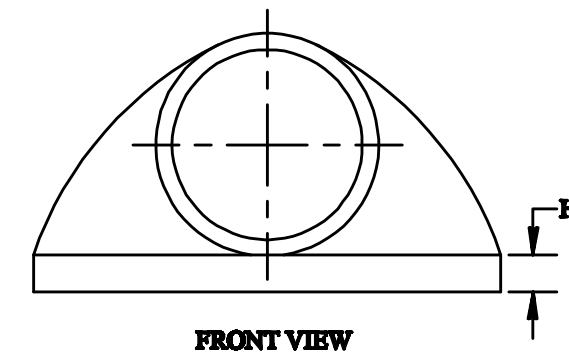
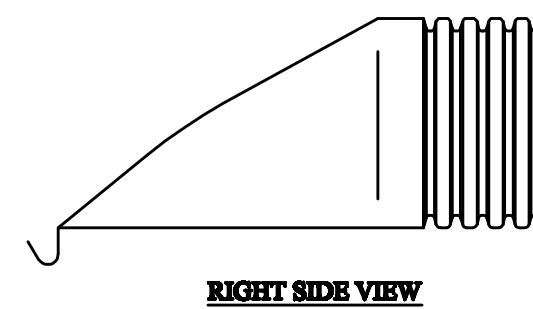


BASIN NO.	Z1 (FT)	Z2 (FT)	TOP ELEV WTE (FT)	CREST ELEV WCE (FT)	CREST WIDTH WW (FT)	TEMPORARY LINING
LIMESTONE CELL 1	2	2	1624.0	1623.1	6	CURLED WOOD MAT (ALL SPILLWAYS)
LIMESTONE CELL 2	2	2	1624.0	1622.5	6	
SETTLING BASIN	2	2	1620.0	1618.8	6	

2 VEGETATED EMERGENCY SPILLWAY
C-5 SCALE: NONE

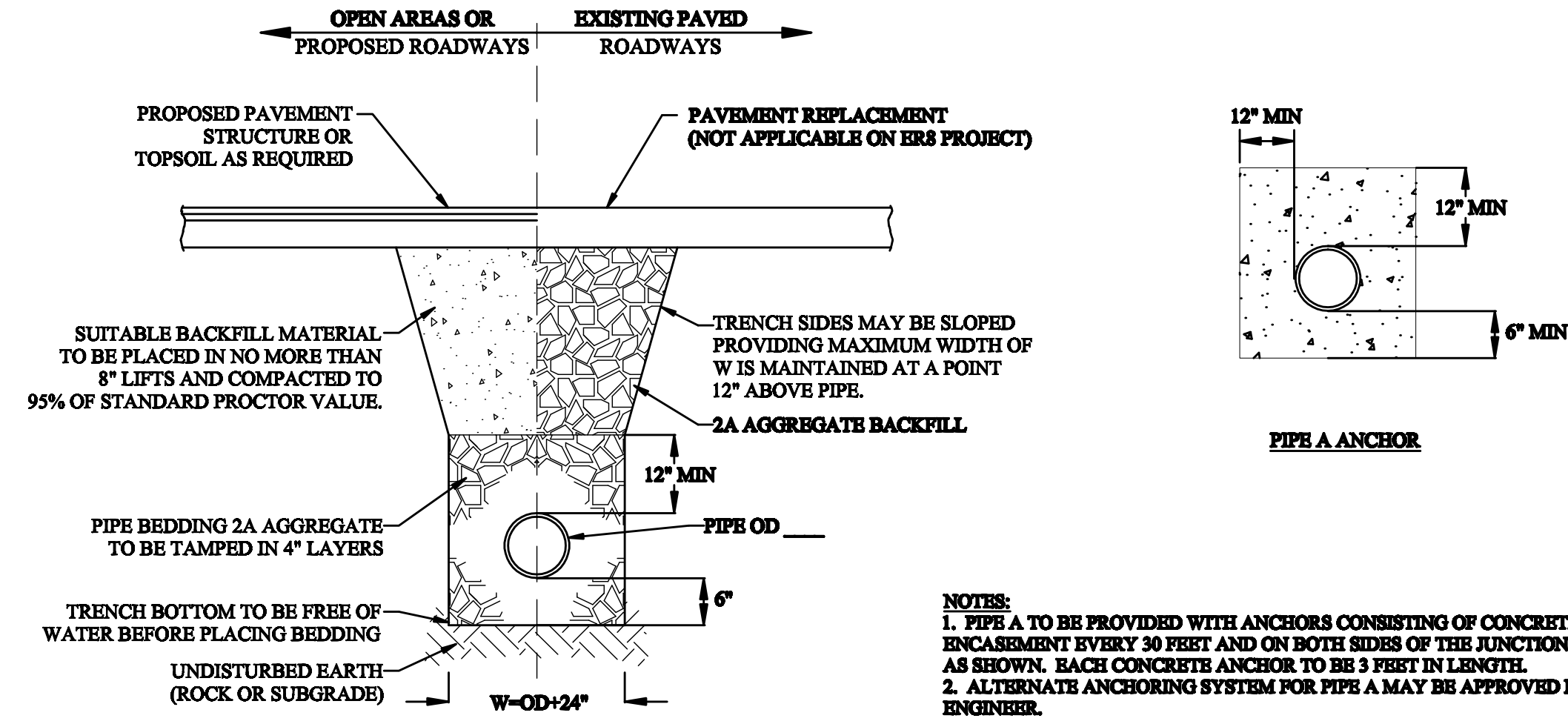


NOTES:
1. PROVIDE FLARED END SECTIONS AS MANUFACTURED BY ADS CORPORATION FOR ADS N-12 PIPE, OR APPROVED EQUAL.



PART #	PIPE SIZE	A	B (MAX)	H	L	W
1210-NP	12" 300mm	6.5" 165mm	10" 254mm	6.5" 165mm	25" 635mm	29" 735mm

3 FLARED END SECTION
C-5 SCALE: NONE

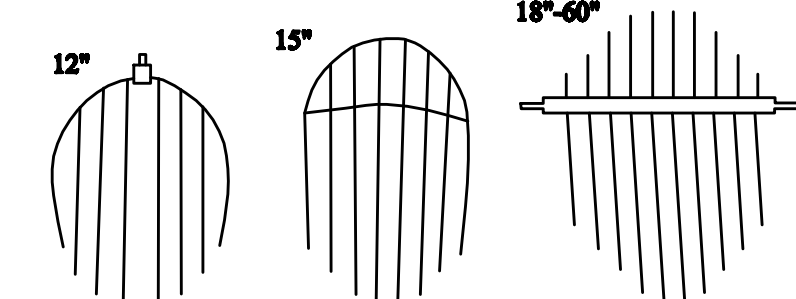


NOTES:
1. PIPE A TO BE PROVIDED WITH ANCHORS CONSISTING OF CONCRETE ENCASEMENT EVERY 30 FEET AND ON BOTH SIDES OF THE JUNCTION BOX AS SHOWN. EACH CONCRETE ANCHOR TO BE 3 FEET IN LENGTH.
2. ALTERNATE ANCHORING SYSTEM FOR PIPE A MAY BE APPROVED BY ENGINEER.

4 TRENCH AND ANCHOR DETAIL FOR CONVEYANCE PIPING UNDER OPEN AREAS AND ROADWAYS
C-5 SCALE: NONE

RAT GUARD SIZE	DIAMETER OF STEEL FRAME & CENTER BARS	SPACE BETWEEN BARS	STEEL STRAP SIZE	BOLT SIZE
4"	1/4"	0.71"	1/8"x3/4"	1/4"x1-1/4"
6"	1/4"	1.125"	1/8"x3/4"	1/4"x1-1/2"
8"	1/4"	1"	1/8"x3/4"	1/4"x1-1/2"
10"	5/16"	1.375"	1/8"x1"	5/16"x1-1/2"
12"	5/16"	1.125"	1/8"x1"	5/16"x1-1/2"
15"	5/16"	1.127"	1/8"x1"	5/16"x1-1/2"

NOTES:
1. INSTALL RODENT GUARD AS MANUFACTURED BY AGRI-DRAIN, INC. OR APPROVED EQUAL.
2. 18" THROUGH 60" - STEEL BARS ARE ATTACHED TO A SQUARE STEEL FRAME. THE RODENT GUARD IS FIELD IN PLACE WITH A STEEL ROD EXTENDING THROUGH THE FRAME AND THEN THROUGH THE PIPE ON EITHER SIDE BY APPROXIMATELY 1".
3. PROVIDE RODENT GUARDS AT OUTLETS OF PIPES B AND C AND LIMESTONE CELL UNDERDRAINS.



5 RODENT GUARD
C-5 SCALE: NONE

SEAL: [Professional Engineer Seal for Michelle M. Merrow, No. PE060677]

NO.	REVISIONS	DESCRIPTION	DATE
1		REVISED FOR CONSTRUCTION	05-18-08

PREPARED BY: **ALDER RUN ENGINEERING**
107 COAL STREET
OSCEOLA MILLS, PENNSYLVANIA 16666
PHONE: (814) 339-6998

PROJECT: **EMIGH RUN 8 (ER-8) AMD TREATMENT PROJECT**
PREPARED FOR EMIGH RUN/LAKESIDE WATERSHED ASSOCIATION
MORRIS TOWNSHIP, CLEARFIELD COUNTY, PA.

PREPARED FOR: **New Miles of Blue Stream NABS**
103 FAIRWAY DRIVE
PHILIPSBURG, PENNSYLVANIA 16866
PHONE: (814) 343-5676

THIS INFORMATION CONTAINED HEREIN MAY NOT BE USED OR COPIED WITHOUT WRITTEN PERMISSION OF THE ENGINEER.

DATE: FEB 1, 2007
SCALE: AS NOTED

TITLE: GENERAL DETAILS