
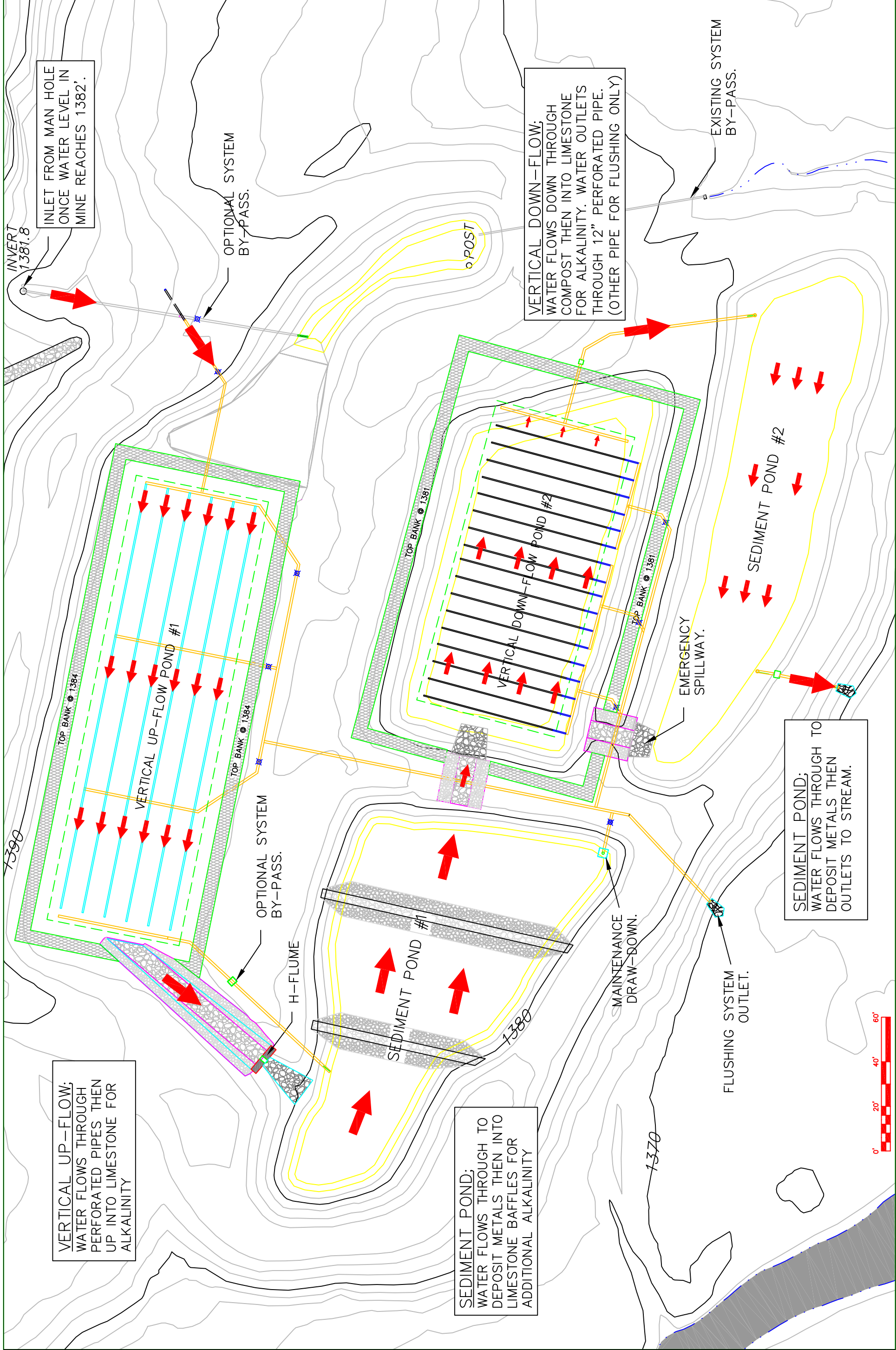


Date: 1/8/08
 Drawn: DWT, BR
 11/07
 Checked: _____
 Approved by: _____
 Designed: D. LOPES

INDIAN CREEK WATERSHED-GALLENINE SITE
FAYETTE COUNTY, PENNSYLVANIA
SYSTEM FLOW


 NRCS
 United States Department of Agriculture
 File No. Gallentine_half.dwg
 Drawing No. _____
 Sheet 1 of 1



INLET FROM MAN HOLE
 ONCE WATER LEVEL IN
 MINE REACHES 1382'.

OPTIONAL SYSTEM
 BY-PASS.

VERTICAL DOWN-FLOW;
 WATER FLOWS DOWN THROUGH
 COMPOST THEN INTO LIMESTONE
 FOR ALKALINITY. WATER OUTLETS
 THROUGH 12" PERFORATED PIPE.
 (OTHER PIPE FOR FLUSHING ONLY)

EXISTING SYSTEM
 BY-PASS.

VERTICAL UP-FLOW POND #1

VERTICAL DOWN-FLOW POND #2

SEDIMENT POND #2

EMERGENCY
 SPILLWAY.

OPTIONAL SYSTEM
 BY-PASS.

H-FLUME

SEDIMENT POND #1

MAINTENANCE
 DRAW-DOWN.

FLUSHING SYSTEM
 OUTLET.

SEDIMENT POND;
 WATER FLOWS THROUGH TO
 DEPOSIT METALS THEN
 OUTLETS TO STREAM.

VERTICAL UP-FLOW;
 WATER FLOWS THROUGH
 PERFORATED PIPES THEN
 UP INTO LIMESTONE FOR
 ALKALINITY

SEDIMENT POND;
 WATER FLOWS THROUGH TO
 DEPOSIT METALS THEN INTO
 LIMESTONE BAFFLES FOR
 ADDITIONAL ALKALINITY

