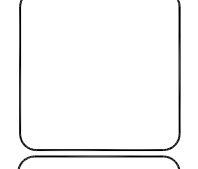
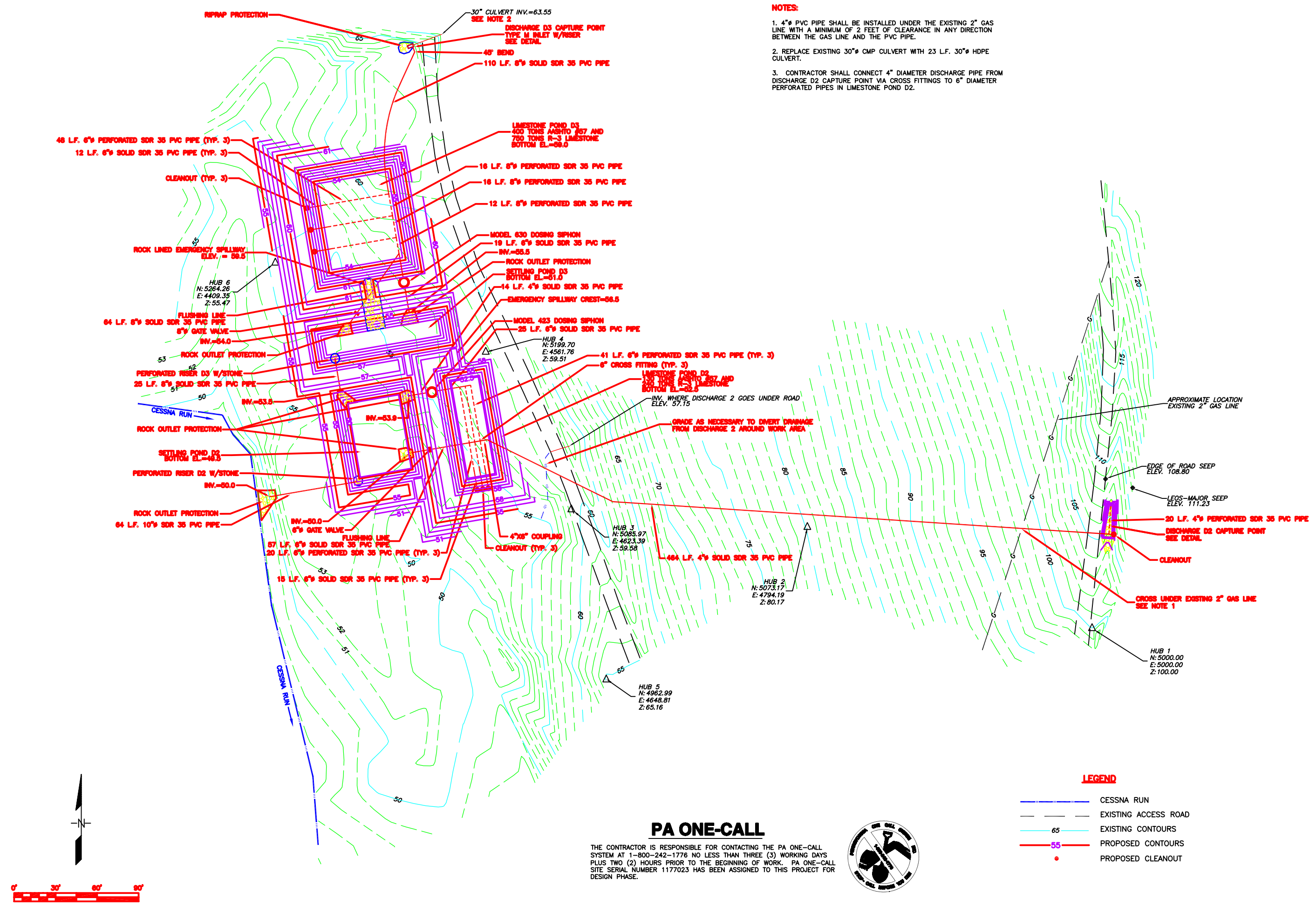


REV	DESCRIPTION	BY	DATE



NOTES:

- 4" PVC PIPE SHALL BE INSTALLED UNDER THE EXISTING 2" GAS LINE WITH A MINIMUM OF 2 FEET OF CLEARANCE IN ANY DIRECTION BETWEEN THE GAS LINE AND THE PVC PIPE.
- REPLACE EXISTING 30" CMP CULVERT WITH 23 L.F. 30" HDPE CULVERT.
- CONTRACTOR SHALL CONNECT 4" DIAMETER DISCHARGE PIPE FROM DISCHARGE D2 CAPTURE POINT VIA CROSS FITTINGS TO 6" DIAMETER PERFORATED PIPES IN LIMESTONE POND D2.



PA ONE-CALL

THE CONTRACTOR IS RESPONSIBLE FOR CONTACTING THE PA ONE-CALL SYSTEM AT 1-800-242-1776 NO LESS THAN THREE (3) WORKING DAYS PLUS TWO (2) HOURS PRIOR TO THE BEGINNING OF WORK. PA ONE-CALL SITE SERIAL NUMBER 1177023 HAS BEEN ASSIGNED TO THIS PROJECT FOR DESIGN PHASE.



LEGEND

- CESSNA RUN
- EXISTING ACCESS ROAD
- 65 EXISTING CONTOURS
- 55 PROPOSED CONTOURS
- PROPOSED CLEANOUT

