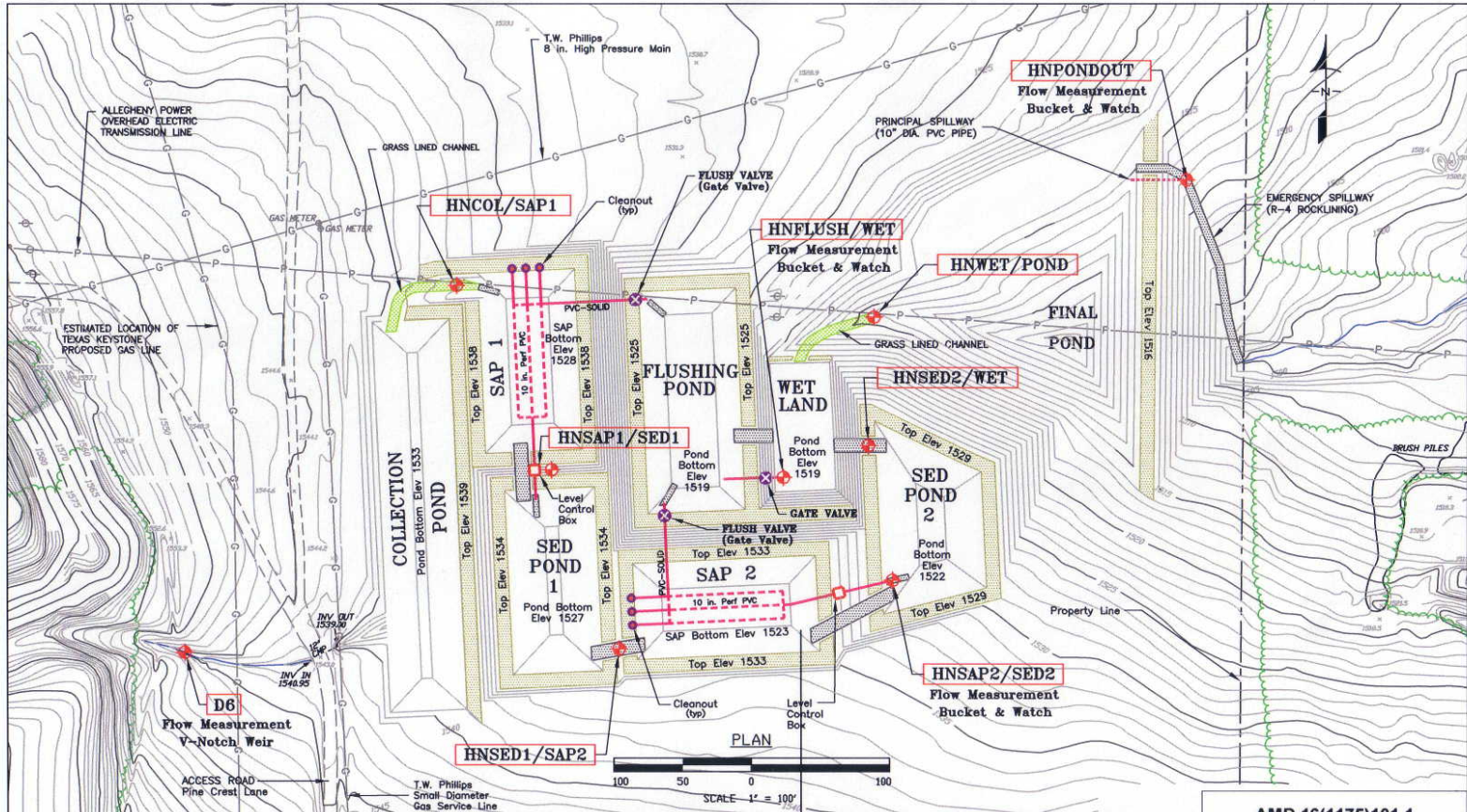


APPENDIX A

SITE A SCHEMATIC AND SAMPLE POINT LOCATIONS



LEGEND	
	Sample Point Location
HNCOL/SAP1	Sample Point ID
	Valve
	Cleanout
	Level Control Box
	Rip-Rap Spillway or Splash Pad
	Top of Embankment
	Grass Lined Channel

Sample Point ID	Description	Flow Measurement	Method
D6	System raw water. Sampled at v-notch weir upstream of site access road.	Yes	V-notch Weir
HNCOL/SAP1	Collection Pond discharge to SAP 1. Sampled from Grass Lined Channel between Collection Pond and SAP 1.	No	
HNSAP1/SED1	SAP1 discharge to Sed Pond 1. Sampled from water level control box on SAP 1 discharge pipe due to discharge pipe outlet being submerged in Sed Pond 1.	No	
HNSED1/SAP2	Sed Pond 1 discharge to SAP 2. Sampled from Rock Lined Spillway between Sed Pond 1 and SAP 2.	No	
HNSAP2/SED2	SAP 2 discharge to Sed Pond 2. Sampled from outlet of SAP 2 discharge pipe into Sed Pond 2.	Yes	Bucket & Watch
HNSED2/WET	Sed Pond 2 discharge to Wetlands. Sampled from Rock Lined Spillway between Sed Pond 2 and Wetlands.	No	
HNFLUSH/WET	Flushing Pond discharge into Wetlands. Sample if flowing. Sample from outlet of Flushing Pond discharge pipe into Wetlands.	Yes	Bucket & Watch
HNWT/POND	Wetlands discharge into final large pond. Sample from Grass Lined Channel between Wetlands and Final Pond.	No	
HNPONDOUT	Final Pond discharge. Sampled from outlet of principal spillway pipe from Final Pond into Rock Lined Spillway.	Yes	Bucket & Watch

AMD 16(1175)101.1

LITTLE MILL CREEK

Clarion Twp. Clarion Co.

Hanlon SAP System

Sample Point Locations