

Summary of Data

Produced by the Pennsylvania Senior Environmental Corps (PaSEC)

Indiana County Chapter

For The Yellow Creek Watershed

Collected 1998 to 2007

This work was done using the “Water Quality Monitoring Field Manual For The Pennsylvania Senior Environmental Corps” written by Nature Abounds in cooperation with the Pennsylvania Department of Environmental Protection and US EPA’s 319 Non-Point Source Program.

TABLE OF CONTENTS

Map of the Yellow Creek Watershed

Site ID Locations

Table 1 – Streams Located In the Yellow Creek Watershed

Table 2 – Stream Habitat Evaluation of the Yellow Creek Watershed

Table 3 – Macroinvertebrate Study of Gillhouse Run

Table 4 – Macroinvertebrate Study of Hogan Run

Table 5 – Macroinvertebrate Study of Leonard Run

Table 6 – Macroinvertebrate Study of Little Yellow Creek (Site ID 751)

Table 7 – Macroinvertebrate Study of Yellow Creek

Table 8 – Stream Description and Water Quality Data of Gillhouse Run

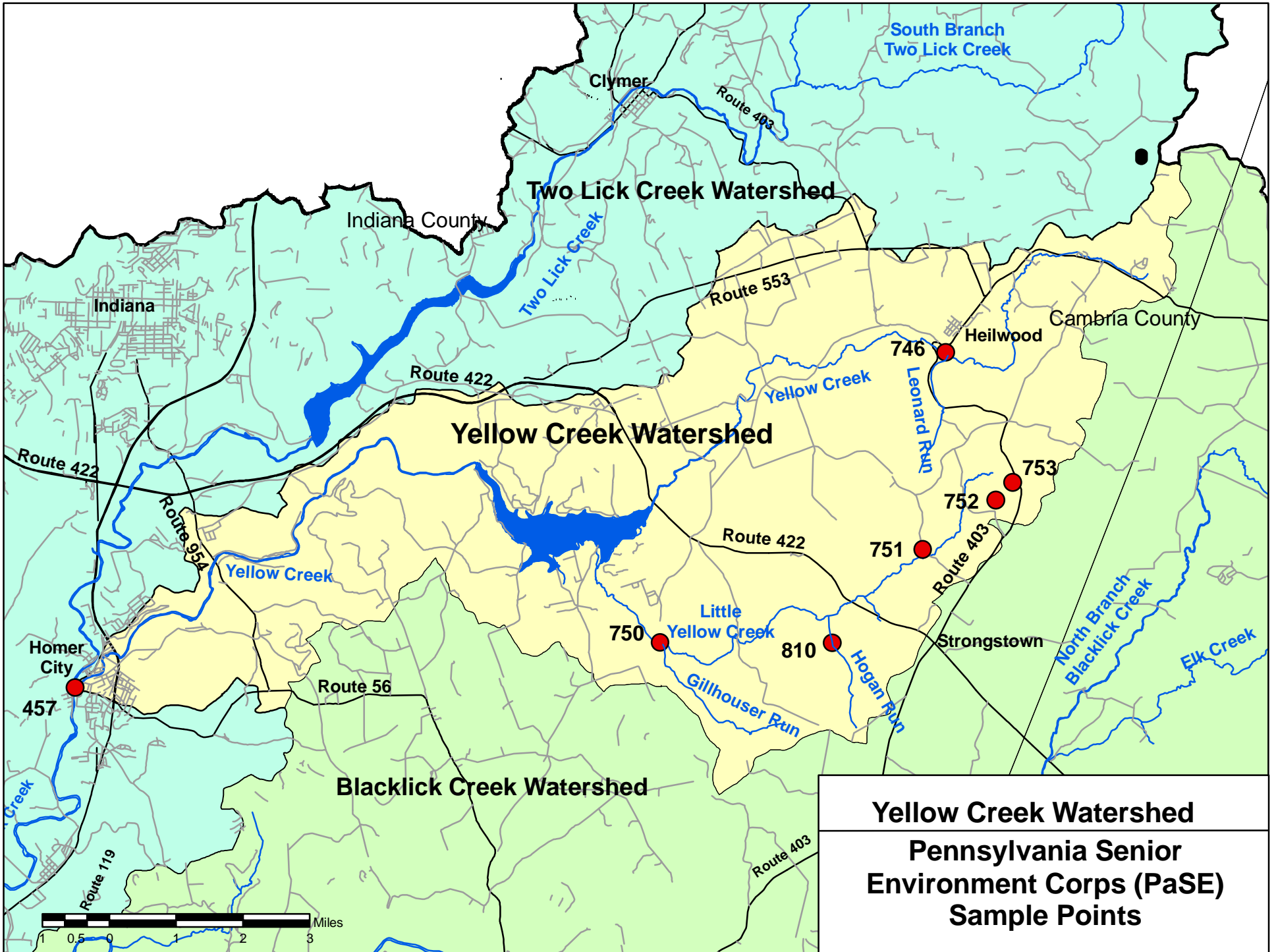
Table 9 – Stream Description and Water Quality Data of Hogan Run

Table 10 – Stream Description and Water Quality Data of Leonard Run

Table 11 – Stream Description and Water Quality Data of Little Yellow Creek (Site ID 751)

Table 12 – Stream Description and Water Quality Data of Little Yellow Creek (Site ID 752)

Table 13 - Stream Description and Water Quality Data of Little Yellow Creek (Site ID 753)



**Yellow Creek Watershed
 Pennsylvania Senior
 Environment Corps (PaSE)
 Sample Points**

YELLWO CREEK WATERSHED

SITE ID LOCATIONS

Site ID	Water Body Name
746	Leonard Run
750	Gillhouser Run
751	Little Yellow Creek
752	Little Yellow Creek
753	Little Yellow Creek
457	Yellow Creek
810	Hogan Run

Table 1
Summary Of Data From The Pennsylvanis Senior Environment Corps (PaSEC)
Site Located In The Yellow Creek Watershed

Water Body Name	Gillhouser Run	Hogan Run	Leonard Run	Little Yellow Creek	Little Yellow Creek	Little Yellow Creek	Yellow Creek
Site ID	750	810	746	751	752	753	457
Stream Habitat Completed?	NO	Yes	Yes	Yes	NO	Yes	Yes
Macroinvertebrate Study Completed?	Yes	Yes	Yes	Yes	NO	Yes	Yes
Water Quality Study Completed?	Yes	Yes	Yes	Yes	Yes	Yes	NO
Watershed Name	Blacklick Creek Watershed	Blacklick Creek Watershed	Blacklick Creek Watershed	Blacklick Creek Watershed	Blacklick Creek Watershed	Blacklick Creek Watershed	Blacklick Creek Watershed
Township	Brush Valley	Buffington	Cherry Hill	Pine	Pine	Pine	White
County	Indiana	Indiana	Indiana	Indiana	Indiana	Indian	Indiana
State	PA	PA	PA	PA	PA	PA	PA
Site Description Location	3 - 4 miles from Ewings Mills	local name of tributary into Little Yellow Creek 1 mile south of Rte 422	located at Heilwood	at Malloy Road Bridge	At Carino's Bridge	At Rte. 403 Bridge	
Stream Code DEP ID#	44153	44147	44214	44147	44147	44147	44118
River Mile Index	2.54	16.2	20.05	5.8	6.6	7.7	6.53
Latitude	40.55250	40.55278	40.61611	40.57333	40.58417	40.58806	40.54111
Longitude	-79.00028	-78.95139	-78.92000	-78.92583	-78.90528	-78.90056	-79.16667
Type of Water Body	stream	stream	stream	stream	stream	stream	stream

Table 2
Summary Of Data From Pennsylvania Senior Environment Corps (PaSEC)
Stream Habitat Evaluation Of The Yellow Creek Watershed

Water Body Name	Hogan Run	Hogan Run	Hogan Run	Hogan Run	Leonard Run	Leonard Run	Leonard Run	Little Yellow Creek	Little Yellow Creek	Little Yellow Creek
Site ID	810	810	810	810	746	746	746	751	751	753
Monitor Date	5/10/2001	10/30/2003	4/29/2004	5/11/2006	5/31/2001	8/23/2001	3/4/2004	4/28/2001	4/26/2002	4/26/2002
Stream Code DEP ID#	44147	44147	44147	44147	44214	44214	44214	44147	44147	44147
River Mile Index	16.2	16.2	16.2	16.2	20.05	20.05	20.05	5.8	5.8	7.7
Type of Water Body	stream	stream	stream	stream	stream	stream	stream	stream	stream	stream
Length of Assessed Area	10	10	10	10	30	30	30	30	30	30
Features										
Attachment Sites for Macroinvertebrates	16	20	20	17	20	10	20	18	17	15
Embeddedness	16	15	15	16	20	15	15	18	18	16
Shelter for Fish and Macroinvertebrates	16	18	15	15	10	10	13	20	18	15
Channel Alteration	16	20	20	18	18	20	20	20	19	15
Sediment Deposition	16	20	12	15	13	13	15	18	16	17
Stream Velocity and Depth Combinations	13	15	18	16	13	10	20	14	16	18
Channel Flow Status	13	15	20	13	10	10	18	10	15	16
Bank Vegetative Protection - Left Bank	9	6	5	10	8	6	10	10	10	10
Bank Vegetative Protection - Right Bank	9	5	5	10	8	4	10	10	10	10
Bank Condition - Left Bank	4	7	5	7	10	5	2	9	8	9
Bank Condition - Right Bank	4	5	5	7	5	5	5	9	10	9
Riparian Width - Left Bank	9	10	10	10	10	10	10	10	10	10
Riparian Width - Right Bank	9	10	10	10	10	10	10	10	10	10
Total (out of possible 200)	150	166	160	164	155	128	168	176	177	170

NOTE: A description of the criteria can be found in the "Water Quality Monitoring Field Manual For The Pennsylvania Senior Environment Corps", page 72

Table 2
Summary Of Data From Pennsylvania Senior Environmental Corps (PaSEC)
Stream Habitat Evaluation Of the Yellow Creek Watershed
(Continued)

Water Body Name	Yellow Creek	Yellow Creek	Yellow Creek	Yellow Creek	Yellow Creek	Yellow Creek	Yellow Creek	Yellow Creek	Yellow Creek	Yellow Creek
Site ID	457	457	457	457	457	457	457	457	457	457
Monitor Date	9/28/1998	9/18/2000	6/11/2001	9/14/2001	4/23/2002	10/7/2002	5/30/2003	11/3/2003	6/21/2004	10/18/2004
Stream Code DEP ID#	44118	44118	44118	44118	44118	44118	44118	44118	44118	44118
River Mile Index	6.53	6.53	6.53	6.53	6.53	6.53	6.53	6.53	6.53	6.53
Type of Water Body	stream	stream	stream	stream	stream	stream	stream	stream	stream	stream
Length of Assessed Area	5	5	5	5	5	5	5	5	5	5
Features										
Attachment Sites for Macroinvertebrates	13	12	17	15	16	13	18	16	18	17
Embeddedness	13	13	12	13	16	12	15	18	15	13
Shelter for Fish and Macroinvertebrates	13	5	8	14	17	14	17	18	17	16
Channel Alteration	13	7	11	12	15	16	17	16	16	12
Sediment Deposition	14	9	8	14	16	17	16	18	17	14
Stream Velocity and Depth Combinations	17	13	16	14	17	16	16	18	18	17
Channel Flow Status	9	9	13	13	17	13	16	18	18	10
Bank Vegetative Protection - Left Bank	2	6	4	4	5	8	7	6	4	2
Bank Vegetative Protection - Right Bank	2	7	4	4	6	9	8	8	5	2
Bank Condition - Left Bank	5	5	6	4	4	7	8	7	5	7
Bank Condition - Right Bank	5	4	7	5	4	7	8	7	5	6
Riparian Width - Left Bank	4	4	2	9	8	7	7	5	7	7
Riparian Width - Right Bank	4	4	3	2	5	8	3	5	8	4
Total (out of possible 200)	114	98	111	123	146	147	156	160	153	127

NOTE: A description of the criteria can be found in the "Water Quality Monitoring Field Manual For The Pennsylvania Senior Environment Corps", page 72

Table 2
Summary Of Data From Pennsylvania Senior Environmental Corps (PaSEC)
Stream Habitat Evaluation Of the Yellow Creek Watershed
(Continued)

Water Body Name	Yellow Creek	Yellow Creek	Yellow Creek	Yellow Creek
Site ID	457	457	457	457
Monitor Date	5/31/2005	5/8/2006	10/9/2006	2/26/2007
Stream Code DEP ID#	44118	44118	44118	44118
River Mile Index	6.53	6.53	6.53	6.53
Type of Water Body	stream	stream	stream	stream
Length of Assessed Area	5	5	5	5
Features				
Attachment Sites for Macroinvertebrates	16	17	16	16
Embeddedness	14	16	15	14
Shelter for Fish and Macroinvertebrates	15	15	14	17
Channel Alteration	14	13	12	14
Sediment Deposition	14	15	12	15
Stream Velocity and Depth Combinations	17	17	16	17
Channel Flow Status	13	16	13	17
Bank Vegetative Protection - Left Bank	6	7	4	6
Bank Vegetative Protection - Right Bank	7	7	4	6
Bank Condition - Left Bank	6	6	4	7
Bank Condition - Right Bank	7	5	6	7
Riparian Width - Left Bank	9	7	9	8
Riparian Width - Right Bank	6	4	6	8
Total (out of possible 200)	144	145	131	152

NOTE: A description of the criteria can be found in the "Water Quality Monitoring Field Manual For The Pennsylvania Senior Environment Corps", page 72

Table 3
Summary Of Data From Pennsylvania Environment Corps (PaSEC)
Macroinvertebrate Study Of Gillhouse Run
Site ID 750

	Gillhouse Run	Gillhouse Run	Gillhouse Run
Site ID	750	750	750
Date	10/27/2000	5/9/2002	9/26/2002
Length of Assessed Area	3	3	3
Stream Type			
Precipitation recent			
Precipitation current			
Stream Bottom			
silt sand gravel substrate			
vegetated bank margins	0		
snags and logs			
aquatic vegetation beds			
GROUP 1 - Sensitive			
gilled snails	0	0	0
helgrammites	1	1	3
mayfly nymphs	0	5	0
non net spinning caddisfly larvae	25	16	75
rifle beetle adults	0	0	0
stonefly nymphs	3	10	20
water penny larvae	0	0	0
GROUP 2 - Somewhat Sensitive			
alderfly larvae	0	0	0
Beetle Larvae	0	0	0
clams	0	0	0
crane fly larvae	0	1	1
crayfish	2	0	10
damselfly nymphs	0	11	13
dragonfly nymphs		1	3
fishfly larvae	0	0	0
net spinning caddisfly larvae	0	0	0
scuds	0	0	0
sowbugs	0	0	0
GROUP 3 - Tolerant			
blackfly larvae	0	0	0
leeches	0	0	0
midge larvae	0	0	0
snails	0	0	0
aquatic worms	0	0	0
Water Quality Score	18.8	21	29.4
Water Quality Rating	Poor	Fair	Fair

NOTE: An explanation of the stream habitat assessment can be found in the "Water Quality Monitoring Field Manual For The Pennsylvania Senior Environment Corps", page 66

Table 4
Summary Of Data From Pennsylvania Environment Corps (PaSEC)
Macroinvertebrate Study Of Hogan Run
Site ID 810

	Hogan Run	Hogan Run	Hogan Run	Hogan Run	Hogan Run	Hogan Run	Hogan Run	Hogan Run	Hogan Run
Site ID	810	810	810	810	810	810	810	810	810
Date	10/5/2000	5/10/2001	10/10/2002	5/15/2003	10/30/2003	4/29/2004	4/21/2005	5/5/2005	5/11/2006
Length of Assessed Area	10	10	10	10	10	10	10	10	10
Stream Type									g
Precipitation recent									clear
Precipitation current									overcast
Stream Bottom									rocky
silt sand gravel substrate									
vegetated bank margins									
snags and logs									
aquatic vegetation beds									
GROUP 1 - Sensitive									
gilled snails	0	0	0	0	0	0	0	0	0
helgrammites	0	0	4	0	0	0	0	0	0
mayfly nymphs	0	14	0	3	0	0	7	0	4
non net spinning caddisfly larvae	6	15	6	6	25	8	9	3	18
rifle beetle adults	0	0	0	0	0	0	1	0	0
stonefly nymphs	21	11	11	25	9	14	8	1	24
water penny larvae	0	0	0	0	0	0	0	0	1
GROUP 2 - Somewhat Sensitive									
alderfly larvae	0	0	0	0	0	0	0	0	0
Beetle Larvae	0	0	0	1	1	0	0	0	0
clams	0	0	0	0	0	0	0	0	0
crane fly larvae	3	1	2	2	0	1	2	1	4
crayfish	7	7	6	7	2	6	9	2	8
damselfly nymphs	0	0	0	0	0	1	0	0	1
dragonfly nymphs		0	0	0	0	1	1	0	0
fishfly larvae	0	0	0	0	0	0	0	0	0
net spinning caddisfly larvae	0	0	0	0	0	0	0	0	0
scuds	0	0	0	0	0	0	0	0	0
sowbugs	0	0	0	0	0	0	0	2	0
GROUP 3 - Tolerant									0
blackfly larvae	0	0	0	0	0	0	0	0	2
leeches	0	0	0	0	0	0	0	0	0
midge larvae	0	0	0	1	0	0	0	0	0
snails	0	0	0	0	0	0	0	0	0
aquatic worms	0	2	0	0	0	0	0	0	0
Water Quality Score	17.4	23.4	22	26.4	17	23.4	29.6	19.6	21.8
Water Quality Rating	Poor	Fair	Fair	Fair	Poor	Fair	Fair	Poor	Fair

NOTE: An explanation of the stream habitat assessment can be found in the "Water Quality Monitoring Field Manual For The Pennsylvania Senior Environment Corps", page 66

Table 5
Summary Of Data From Pennsylvania Environment Corps (PaSEC)
Macroinvertebrate Study Of Leonard Run
Site ID 746

	Leonard Run	Leonard Run
Site ID	746	746
Date	5/31/2001	8/23/2001
Length of Assessed Area	30	30
Stream Type		
Precipitation recent		
Precipitation current		
Stream Bottom		
silt sand gravel substrate	3	
vegetated bank margins		
snags and logs		
aquatic vegetation beds		
GROUP 1 - Sensitive		
gilled snails	0	0
helgrammites	0	0
mayfly nymphs	0	0
non net spinning caddisfly larvae	0	0
rifle beetle adults	0	0
stonefly nymphs	0	0
water penny larvae	0	0
GROUP 2 - Somewhat Sensitive		
alderfly larvae	0	0
Beetle Larvae	0	0
clams	0	0
crane fly larvae	0	0
crayfish	1	0
damsel fly nymphs	0	0
dragonfly nymphs	0	0
fish fly larvae	0	0
net spinning caddisfly larvae	0	0
scuds	0	0
sowbugs	0	0
GROUP 3 - Tolerant		
blackfly larvae	0	0
leeches	0	0
midge larvae	0	0
snails	0	0
aquatic worms	0	0
Water Quality Score	3.2	0
Water Quality Rating	Poor	Poor

NOTE: An explanation of the stream habitat assessment can be found in the "Water Quality Monitoring Field Manual For The Pennsylvania Senior Environment Corps", page 66

Table 6
Summary Of Data From Pennsylvania Environment Corps (PaSEC)
Macroinvertebrate Study Of Little Yellow Creek
Site ID 751

	Little Yellow Creek	Little Yellow Creek	Little Yellow Creek
Site ID	751	751	753
Date	4/28/2001	4/26/2002	4/26/2002
Length of Assessed Area	30	30	30
Stream Type			
Precipitation recent			
Precipitation current			
Stream Bottom			
silt sand gravel substrate			
vegetated bank margins			
snags and logs			
aquatic vegetation beds			
GROUP 1 - Sensitive			
gilled snails	0	0	0
helgrammites	2	0	0
mayfly nymphs	33	5	3
non net spinning caddisfly larvae	1	2	9
riffle beetle adults	0	0	0
stonefly nymphs	5	4	2
water penny larvae	5	0	0
GROUP 2 - Somewhat Sensitive			
alderfly larvae	0	0	0
Beetle Larvae	0	0	0
clams	0	0	0
crane fly larvae	2	1	0
crayfish	6	4	3
damselfly nymphs	0	0	0
dragonfly nymphs	0	0	0
fishfly larvae	0	2	1
net spinning caddisfly larvae	9	1	1
scuds	0	0	0
sowbugs	0	0	0
GROUP 3 - Tolerant			
blackfly larvae	0	0	0
leeches	0	0	0
midge larvae	3	0	0
snails	1	0	0
aquatic worms	1	1	1
Water Quality Score	36.4	29.6	25.8
Water Quality Rating	Fair	Fair	Fair

NOTE: An explanation of the stream habitat assessment can be found in the "Water Quality Monitoring Field Manual For The Pennsylvania Senior Environment Corps", page 66

Table 7
Summary Of Data From Pennsylvania Environment Corps (PaSEC)
Macroinvertebrate Study Of Yellow Creek
Site ID 457

	Yellow Creek	Yellow Creek	Yellow Creek	Yellow Creek	Yellow Creek	Yellow Creek	Yellow Creek	Yellow Creek
Site ID	457	457	457	457	457	457	457	457
Date	12/7/1998	8/18/2000	6/11/2001	9/14/2001	3/23/2002	10/7/2002	5/30/2003	11/3/2003
Length of Assessed Area	5	5	5	5	5	5	5	5
Stream Type								
Precipitation recent								
Precipitation current								
Stream Bottom								
silt sand gravel substrate								
vegetated bank margins								
snags and logs								
aquatic vegetation beds								
GROUP 1 - Sensitive								
gilled snails	0	0	0	0	0	0	0	0
helgrammites	0	0	0	0	0	0	0	0
mayfly nymphs	0	0	0	0	0	0	0	0
non net spinning caddisfly larvae	0	0	0	0	0	0	0	0
riffle beetle adults	0	0	0	0	0	0	0	0
stonefly nymphs	0	0	0	0	0	0	0	0
water penny larvae	0	0	0	0	0	0	0	0
GROUP 2 - Somewhat Sensitive								
alderfly larvae	0	0	0	0	0	0	0	0
Beetle Larvae	0	0	0	0	0	0	0	0
clams	0	0	0	0	0	0	0	0
crane fly larvae	0	0	0	0	0	0	0	0
crayfish	0	0	0	0	0	0	0	0
damselfly nymphs	0	0	0	0	0	0	0	0
dragonfly nymphs	0	0	0	0	0	0	0	0
fishfly larvae	0	0	0	0	0	0	0	0
net spinning caddisfly larvae	0	0	0	0	0	0	0	0
scuds	0	0	0	0	0	0	0	0
sowbugs	0	0	0	0	0	0	0	0
GROUP 3 - Tolerant								
blackfly larvae	0	0	0	0	0	0	0	0
leeches	0	0	0	0	0	0	0	0
midge larvae	0	0	0	0	0	0	0	0
snails	0	0	0	0	0	0	0	0
aquatic worms	0	0	0	0	0	0	0	0
Water Quality Score	0	0	0	0	0	0	0	0
Water Quality Rating	Poor	Poor	Poor	Poor	Poor	Poor	Poor	Poor

NOTE: An explanation of the stream habitat assessment can be found in the "Water Quality Monitoring Field Manual For The Pennsylvania Senior Environment Corps", page 66

Table 7
Summary of Data From Pennsylvania Senior Environment Corps (PaSEC)
Macroinvertebrate Study Of Yellow Creek
Site ID 457
(Continued)

	Yellow Creek	Yellow Creek	Yellow Creek	Yellow Creek	Yellow Creek	Yellow Creek
Site ID	457	457	457	457	457	457
Date	6/21/2004	10/18/2004	5/31/2005	5/8/2006	10/9/2006	2/26/2007
Length of Assessed Area	5	5	5	5	5	5
Stream Type				meandering	meandering	meandering
Precipitation recent				overcast	clear	rain
Precipitation current				overcast	clear	overcast
Stream Bottom				rocky	rocky	rocky
silt sand gravel substrate						
vegetated bank margins						
snags and logs						
aquatic vegetation beds						
GROUP 1 - Sensitive						
gilled snails	0	0	0	0	0	0
helgrammites	0	0	0	0	0	0
mayfly nymphs	0	0	0	0	0	0
non net spinning caddisfly larvae	0	0	0	0	0	0
riffle beetle adults	0	0	0	0	0	0
stonefly nymphs	0	0	0	0	0	0
water penny larvae	0	0	0	0	0	0
GROUP 2 - Somewhat Sensitive						
alderfly larvae	0	0	0	0	4	0
Beetle Larvae	0	0	0	0	0	0
clams	0	0	0	0	0	0
crane fly larvae	0	0	0	0	0	0
crayfish	1	0	0	0	0	0
damselfly nymphs	0	0	0	0	0	0
dragonfly nymphs	0	0	0	0	0	0
fishfly larvae	0	0	0	0	0	0
net spinning caddisfly larvae	0	0	0	0	0	0
scuds	0	0	0	0	0	0
sowbugs	0	0	0	0	0	0
GROUP 3 - Tolerant						
blackfly larvae	0	0	0	0	6	0
leeches	0	0	0	0	0	0
midge larvae	0	0	0	0	0	0
snails	0	0	0	0	0	0
aquatic worms	0	0	0	0	0	0
Water Quality Score	3.2	0	0	0	6.4	0
Water Quality Rating	Poor	Poor	Poor	Poor	Poor	Poor

NOTE: An explanation of the stream habitat assessment can be found in the "Water Quality Monitoring Field Manual For The Pennsylvania Senior Environment Corps", page 66

Table 8
Summary Of Data From Pennsylvania Senior Environment Corps (PaSEC)
Stream Description And Water Quality Data For Gillhouse Run
Site ID 750

Water Body Name	Gillhouse Run	Gillhouse Run	Gillhouse Run	Gillhouse Run	Gillhouse Run	Gillhouse Run	Gillhouse Run	Gillhouse Run
Site ID	750	750	750	750	750	750	750	750
Monitor Date	8/19/1999	10/21/1999	10/27/2000	4/5/2001	9/13/2001	2/21/2002	5/9/2002	9/26/2002
River Mile Index	2.54	2.54	2.54	2.54	2.54	2.54	2.54	2.54
Type of Water Body	stream	stream	stream	stream	stream	stream	stream	stream
Length of Assessed Area	3	3	3	3	3	3	3	3
Features								
Water Appearance	clear	clear	clear	clear	clear	clear	muddy/cloudy	clear
Water Appearance Note								
Soil Odors	non-wadable	earthy	earthy	musty	musty	musty	earthy	non-wadable
Soil Odors Note								
Sediment Deposits	none	sand	sand	sand	sand	sand	sand	other
Sediment Deposits Note		gravel	gravel	gravel			gravel	some traces of iron
Stream Type	straight	meandering pool / riffle	pool/riffle	straight	meandering	meandering pool / riffle	meandering pool / riffle	meandering pool / riffle
Dams	no	no						
High Water Mark		0.5	1.5				1	
Highwater Estimate								
Stream Bank Cross-Section Shape	undercut	rectangular	undercut	rectangular	rectangular	undercut	rectangular	rectangular
Stream Bank Erosion	extensive	occasional	occasional	occasional	extensive	extensive	occasional	extensive
Inorganic Stream Bottom								
% Bedrock								
% Boulder	30	20	50	20	40	10		10
% Cobble	30	50	20	30	20	65	75	60
% Gravel	10	5	10	15	25	20	15	20
% Sand	10	5	10	15	10	2	10	1
% Silt	5	5	3	5	2	2		1
% Clay								
% Other								
other note								
Organic Stream Bottom								
%_Muck-mud		5			1			
% Pulpy peat	5			5				1
% Fibrous peat	5				1			
% Detritus	3	10	5	10				
% Logs limbs	2		2		1	1		2
% Marl								
% Other								5
Other description								
Non Wadable								

NOTE: An explanation of the stream habitat assessment can be found in the "Water Quality Monitoring Field Manual For The Pennsylvania Senior Environment Corps", page 72

Table 8
Summary of Data From The Pennsylvania Environment Corps (PaSEC)
Stream Description And Water Quality Data For Gillhouse Run
Site ID 750
(Continued)

Site ID	750	750	750	750	750	750	750	750
Monitor Date	8/19/1999	10/21/1999	10/27/2000	4/5/2001	9/13/2001	2/21/2002	5/9/2002	9/26/2002
Land Use								
% Wetlands	10						10	
% Forest	80	90	80	80	100	75	70	90
% Cropland								
% Pasture								
% Residential								
% Commercial								
% Industrial								
% Unused abandoned	10			20				
% Overgrown shrub and small trees		10	20			25	20	10
% Other								
Other Land Use Note								
Precipitation current	overcast	clear	clear	clear	clear	showers	overcast	rain
Precipitation recent	overcast	clear	clear	clear	clear	rain	rain	clear
Water Odors	none	none	none	none	none	none	earthy	none
Water Odors Note								
Stream Width	7.32	38.5	3.04	3.3	1	3.6	5.2	1.2
Non-Wadable								
Stream Width Note								
Stream Depth	0.508	0.91	0.177	0.87	0.08	0.18	0.25	0.058
Non-Wadable								
Stream depth note								
Surface Velocity		0.23	0.4	0.5	0.08	0.62	0.85	0.35
Surface Velocity Note								
Stream Flow Volume or Discharge		6.44	0.172	1.16	0.005	0.321	0.88	0.019
USGS Gaging								
Air Temperature C	26	8	18	6	16		12	16
Air Temperature F								
Water Temperature C	17	5	12	4	15		17	14
Water Temperature F								
pH, S. U.	5.9	6.1	6.3	6.1	6.2	6.5	6.4	6.6
Dissolved Oxygen, mg/L	6	6	8	8	7	8	10	10
Specific Conductance	600	800	600	152	185	197	75	60
Nitrate, mg/L	0.88	0.79	0.96	1.7	0.18	1.3	0.35	0.35
Total Phosphate, mg/L	0.08	0.1	0.1	0.4	1	0.4	0.44	0.2
Sulfate, mg/L	50	50	50	50	50	50	50	50
Total Alkalinity, mg/L as CaCO ₃	20	20	40	5	40	20	20	20

NOTE: An explanation of the stream habitat assessment can be found in the "Water Quality Monitoring Field Manual For The Pennsylvania Senior Environment Corps", page 72

Table 9a
Summary Of Data From The Pennsylvania Environment Corps (PaSEC)
Stream Description And Water Quality Data For Hogan Run
Site ID 810

Water Body Name	Hogan Run	Hogan Run	Hogan Run	Hogan Run	Hogan Run	Hogan Run	Hogan Run
Site ID	810	810	810	810	810	810	810
Monitor Date	7/24/2000	10/5/2000	2/22/2001	5/10/2001	7/26/2001	12/6/2001	4/11/2002
River Mile Index	16.2	16.2	16.2	16.2	16.2	16.2	16.2
Type of Water Body	stream	stream	stream	stream	stream	stream	stream
Length of Assessed Area	10	10	10	10	10	10	10
Features							
Water Appearance	muddy/ cloudy	clear	clear	clear	clear	clear	clear
Water Appearance Note							
Soil Odors	non-wadable	earthy	non-wadable	non-wadable	moldy	non-wadable	non-wadable
Soil Odors Note							
Sediment Deposits	sludge	sand	sand	sand	sand	none	sand
Sediment Deposits Note	gravel	mud	gravel	gravel			gravel
Stream Type	straight	meandering g pool / riffle	meandering pool / riffle	straight	meandering pool / riffle	meandering pool / riffle	meandering pool / riffle
Dams	no	no	no				
High Water Mark	1	1.5	1	1.5			
Highwater Estimate							
Stream Bank Cross-Section Shape	rectangular	undercut	undercut	undercut	rectangular	rectangular	U
Stream Bank Erosion	extensive	extensive	extensive	extensive	extensive	extensive	extensive
Inorganic Stream Bottom							
% Bedrock							
% Boulder	10	30	5	30	25	5	5
% Cobble	10	50	50	30	50	60	75
% Gravel	20	5	15	10	15	10	10
% Sand	30	5	20	5	2	5	5
% Silt	10		1	20	5		1
% Clay	10	5				15	
% Other							
other note							
Organic Stream Bottom							
%_Muck-mud						3	
% Pulpy peat	1			1			1
% Fibrous peat	1	2	1	1		1	2
% Detritus	2	3	5	2			
% Logs limbs	5		3	1	3	1	1
% Marl							
% Other	1						
Other description							
Non Wadable							

NOTE: An explanation of the stream habitat assessment can be found in the "Water Quality Monitoring Field Manual For The Pennsylvania Senior Environment Corps", page 72

Table 9a
Summary of Data From The Pennsylvania Environment Corps (PaSEC)
Stream Description And Water Quality Data For Hogan Run
Site ID 810
(Continued)

Site ID	810	810	810	810	810	810	810
Monitor Date	7/24/2000	10/5/2000	2/22/2001	5/10/2001	7/26/2001	12/6/2001	4/11/2002
Land Use							
% Wetlands							
% Forest	40	80	80	90	90	90	80
% Cropland							
% Pasture							
% Residential							
% Commercial							
% Industrial					10		
% Unused abandoned	50						
% Overgrown shrub and small trees	10	20	20	10		10	20
% Other							
Other Land Use Note							
Precipitation current	overcast	showers	overcast	clear	showers	showers	clear
Precipitation recent	rain	showers	clear	clear	rain	clear	clear
Water Odors	none	none	none	none	none	none	none
Water Odors Note							
Stream Width	3.2	2.25	9.8	1.5	1.5	2.2	2.43
Non-Wadable							
Stream Width Note							
Stream Depth	0.07	0.07	0.127	0.045	0.06	0.07	0.182
Non-Wadable							
Stream depth note							
Surface Velocity	0.33	0.59	0.74	43	0.56	0.42	0.58
Surface Velocity Note							
Stream Flow Volume or Discharge	0.058	0.075	0.225	2.34	0.004	0.05	0.2
USGS Gaging							
Air Temperature C	20	13	-5	25	20	10	11
Air Temperature F							
Water Temperature C	17	15	0	12	17	8	6
Water Temperature F							
pH, S. U.	5.9	6.6	6.2	5.6	6.3	6.4	5.9
Dissolved Oxygen, mg/L	5	8	9	8	8	8	10
Specific Conductance	600	800	63	102	124	115	100
Nitrate, mg/L	1.3	1.3	3	2.2	0.44	0.88	0.88
Total Phosphate, mg/L	0.2	0.1	0.2	0.7	1	1	0.5
Sulfate, mg/L	50	50	50	50	50	50	50
Total Alkalinity, mg/L as CaCO ₃	20	40	10	15	15	20	20
Notes On This Monitoring Site							

NOTE: An explanation of the stream habitat assessment can be found in the "Water Quality Monitoring Field Manual For The Pennsylvania Senior Environment Corps", page 72

Table 9b
Summary of Data From The Pennsylvania Environment Corps (PaSEC)
Stream Description And Water Quality Data For Hogan Run
Site ID 810
(Continued)

Water Body Name	Run	Hogan Run	Hogan Run	Hogan Run	Hogan Run	Hogan Run	Hogan Run
Site ID	810	810	810	810	810	810	810
Monitor Date	7/15/2002	10/10/2002	5/15/2003	10/30/2003	4/29/2004	4/21/2005	7/14/2005
River Mile Index	16.2	16.2	16.2	16.2	16.2	16.2	16.2
Type of Water Body	stream	stream	stream	stream	stream	stream	stream
Length of Assessed Area	10	10	10	10	10	10	10
Features							
Water Appearance	clear	clear	clear	clear	clear	clear	clear
Water Appearance Note							
Soil Odors	earthy	non-wadable	earthy	non-wadable	non-wadable	non-wadable	non-wadable
Soil Odors Note							
Sediment Deposits	none	none	none	sand	sand	sand	sand
Sediment Deposits Note				gravel	mud and gravel	gravel	gravel
Stream Type	meandering pool / riffle	meandering	meandering pool / riffle	meandering pool / riffle	meandering pool / riffle	meandering	meandering pool / riffle
Dams							
High Water Mark							1
Highwater Estimate							
Stream Bank Cross-Section Shape	rectangular	U	rectangular	U	U	U	U
Stream Bank Erosion	occasional	extensive	extensive	extensive	extensive	extensive	extensive
Inorganic Stream Bottom							
% Bedrock							
% Boulder	40	25	5	20	20	30	10
% Cobble	40	50	85	50	40	40	60
% Gravel	10	20	5	10	20	10	10
% Sand	2	2	1	10	2	10	5
% Silt	1						
% Clay	5	2	1	5			
% Other							
other note							
Organic Stream Bottom							
% Muck-mud					10		5
% Pulpy peat						3	3
% Fibrous peat				3	3		2
% Detritus	1		1		2	2	
% Logs limbs	1	1	2	2	3	5	5
% Marl							
% Other							
Other description							
Non Wadable							

NOTE: An explanation of the stream habitat assessment can be found in the "Water Quality Monitoring Field Manual For The Pennsylvania Senior Environment Corps", page 72

Table 9b
Summary of Data From The Pennsylvania Environment Corps (PaSEC)
Stream Description And Water Quality Data For Hogan Run
Site ID 810
(Continued)

Site ID	810	810	810	810	810	810	810
Monitor Date	7/15/2002	10/10/2002	5/15/2003	10/30/2003	4/29/2004	4/21/2005	7/14/2005
Land Use							
% Wetlands							
% Forest	90	100	100	80	80	80	70
% Cropland							
% Pasture							
% Residential							
% Commercial							
% Industrial							
% Unused abandoned							
% Overgrown shrub and small trees	10			20	20	20	30
% Other							
Other Land Use Note							
Precipitation current	clear	showers	showers	clear	clear	overcast	overcast
Precipitation recent	clear	overcast	showers	clear	clear	rain	rain
Water Odors	none	musty	none	none	none	none	none
Water Odors Note							
Stream Width	1.5	1.2	2	2.6	4.6	3.5	1.4
Non-Wadable							
Stream Width Note							
Stream Depth	0.05	0.08	0.16	0.152	0.162	0.134	0.068
Non-Wadable							
Stream depth note							
Surface Velocity	0.42	0.46	0.85	0.99	0.63	0.68	0.33
Surface Velocity Note							
Stream Flow Volume or Discharge	0.0025	0.33	0.217	0.312	0.375	0.255	0.025
USGS Gaging							
Air Temperature C	19		13	7	15	9	22
Air Temperature F							
Water Temperature C	17		10	7	8	10	17
Water Temperature F							
pH, S. U.	6.5	6.4	6.4	6.6	6.2	5.3	6
Dissolved Oxygen, mg/L	6	10	10	9	9	10	7
Specific Conductance	100	90	600	69	60	55	138
Nitrate, mg/L	0.44	0	0.44	0.42	0.66	0.44	0.88
Total Phosphate, mg/L	0.2	0.7	0	0	0.1	0.1	0
Sulfate, mg/L							
Total Alkalinity, mg/L as CaCO3	35	25	10	10	10	10	25

NOTE: An explanation of the stream habitat assessment can be found in the "Water Quality Monitoring Field Manual For The Pennsylvania Senior Environment Corps", page 72

Table 9c
Summary of Data From The Pennsylvania Environment Corps (PaSEC)
Stream Description And Water Quality Data For Hogan Run
Site ID 810
(Continued)

Water Body Name	Hogan Run	Hogan Run	Hogan Run	Hogan Run
Site ID	810	810	810	810
Monitor Date	5/11/2006	9/7/2006	3/29/2007	8/16/2007
River Mile Index	16.2	16.2	16.2	16.2
Type of Water Body	stream	stream	stream	stream
Length of Assessed Area	10	10	10	10
Features				
Water Appearance	clear	clear	clear	clear
Water Appearance Note				
Soil Odors	none	earthy	none	none
Soil Odors Note				
Sediment Deposits	none	none	none	none
Sediment Deposits Note				
Stream Type	meandering pool / riffle	meandering pool / riffle	meandering pool / riffle	meandering pool / riffle
Dams	no	no	no	no
High Water Mark				
Highwater Estimate				
Stream Bank Cross- Section Shape	rectangular	rectangular	rectangular	rectangular
Stream Bank Erosion	occasional	occasional	extensive	occasional
Inorganic Stream Bottom				
% Bedrock				
% Boulder	20	20	20	10
% Cobble	65	65	50	60
% Gravel	5	8	15	20
% Sand		1	2	2
% Silt	1	1		
% Clay	4	4	10	2
% Other				
other note				
Organic Stream Bottom				
% Muck-mud			1	
% Pulpy peat		1	1	2
% Fibrous peat			1	
% Detritus	5			
% Logs limbs				2
% Marl				
% Other				2
Other description				
Non Wadable				

NOTE: An explanation of the stream habitat assessment can be found in the "Water Quality Monitoring Field Manual For The Pennsylvania Senior Environment Corps", page 72

Table 9c
Summary of Data From The Pennsylvania Environment Corps (PaSEC)
Stream Description And Water Quality Data For Hogan Run
Site ID 810
(Continued)

Site ID	810	810	810	810
Monitor Date	5/11/2006	9/7/2006	3/29/2007	8/16/2007
Land Use				
% Wetlands				
% Forest	100	100	100	100
% Cropland				
% Pasture				
% Residential				
% Commercial				
% Industrial				
% Unused abandoned				
% Overgrown shrub and small trees				
% Other				
Other Land Use Note				
Precipitation current	overcast	showers	showers	showers
Precipitation recent	clear	clear	clear	showers
Water Odors	none	none	none	none
Water Odors Note				
Stream Width	1.7	1.9	3.5	1.7
Non-Wadable				
Stream Width Note				
Stream Depth	0.14	0.12	0.1144	0.08
Non-Wadable				
Stream depth note				
Surface Velocity	0.66	0.68	0.98	0.6
Surface Velocity Note				
Stream Flow Volume or Discharge	0.126	0.124	0.3	0.065
USGS Gaging				
Air Temperature C	15	15	3	20
Air Temperature F				
Water Temperature C	11	13	5	17
Water Temperature F				
pH, S. U.	6.3	6.2	5.8	6.4
Dissolved Oxygen, mg/L	9	9	9	7
Specific Conductance	60	0.07	60	85
Nitrate, mg/L	0.44	5.18	1.32	0.44
Total Phosphate, mg/L	ND	ND	0.1	0.6
Sulfate, mg/L	<50	<50	<50	<50
Total Alkalinity, mg/L as CaCO3	25	40	15	20
Other observations comments		total iron .6	acidity of 40 and total iron of .5	acidity 40; total iron 1

NOTE: An explanation of the stream habitat assessment can be found in the "Water Quality Monitoring Field Manual For The Pennsylvania Senior Environment Corps", page 72

Table 10a
Summary Of Data From The Pennsylvania Environment Corps (PaSEC)
Stream Description And Water Quality Data For Leonard Run
Site ID 746

Water Body Name	Leonard Run	Leonard Run	Leonard Run	Leonard Run	Leonard Run	Leonard Run	Leonard Run
Site ID	746	746	746	746	746	746	746
Monitor Date	8/26/1999	8/17/2000	1/18/2001	5/31/2001	8/23/2001	11/1/2001	1/31/2002
River Mile Index	20.05	20.05	20.05	20.05	20.05	20.05	20.05
Type of Water Body	stream	stream	stream	stream	stream	stream	stream
Area	30	30	30	30	30	30	30
Features							
Water Appearance	clear	milky/white	clear other	foamy milky/white	clear	milky/white	milky/white
Note			iron deposits				
Soil Odors	non-wadable	sulfur	musty	sulfur	sulfur	wadable	earthy
Soil Odors Note							
Sediment Deposits	none	sand	sludge	sludge	sludge	other	sand
Sediment Deposits Note		rocks coated with aluminum	gravel & silt		iron, aluminum	aluminum & iron deposits	
Stream Type	meandering	meandering pool / riffle	meandering pool / riffle	meandering	meandering pool / riffle	meandering	meandering braided
Dams		no	no				
High Water Mark		1.5	1	1.5		2	
Highwater Estimate							
Stream Bank Cross-Section Shape	U	rectangular	undercut	rectangular	U	undercut	rectangular
Stream Bank Erosion	extensive	extensive	extensive	extensive	extensive	extensive	extensive
Bottom							
% Bedrock	10						
% Boulder	10			5	10	4	5
% Cobble	30	50	50	50	60	20	60
% Gravel	25	10	15	10	15	60	25
% Sand	10	10		10	10		5
% Silt		10				10	2
% Clay		10					2
% Other		4					
other note		shale					
Organic Stream Bottom							
% Muck-mud	10	2	25			1	
% Pulpy peat						1	
% Fibrous peat		1			2		
% Detritus	5	2		5		1	
% Logs limbs		1		5	2	3	1
% Marl							
% Other			10	15	1		
Other description			mixture	aluminum sludge	Fe and Al sludge		
Non Wadable							

NOTE: An explanation of the stream habitat assessment can be found in the "Water Quality Monitoring Field Manual For The Pennsylvania Senior Environment Corps", page 72

Table 10a
Summary of Data From The Pennsylvania Environment Corps (PaSEC)
Stream Description And Water Quality Dat For Leonard Runa
Dite ID 746
(Continued)

Site ID	746	746	746	746	746	746	746
Monitor Date	8/26/1999	8/17/2000	1/18/2001	5/31/2001	8/23/2001	11/1/2001	1/31/2002
Land Use							
% Wetlands							
% Forest		50	80	80	40	50	
% Cropland							
% Pasture							
% Residential							
% Commercial							
% Industrial							
% Unused abandoned	60	10				10	50
% Overgrown shrub and small trees	40	40	20	20	60	40	50
% Other							
Other Land Use Note							
Precipitation current	clear	overcast	overcast	clear	overcast	clear	showers
Precipitation recent	clear	clear	overcast	clear	overcast	clear	rain
Water Odors	none	musty moldy	musty	sulfur	sulfur	other	spicy
Water Odors Note							
Stream Width		0.86	6.03	2.5	0.8	1.6	2.5
Non-Wadable	non-wadable						
Stream Width Note							
Stream Depth		8.13	0.07	0.038	0.062	0.062	0.16
Non-Wadable	non-wadable						
Stream depth note							
Surface Velocity		0.42	0.48	0.54	0.29	0.21	0.59
Surface Velocity Note							
Stream Flow Volume or Discharge		2.39	0.162	0.04	0.01	0.017	0.18
USGS Gaging							
Air Temperature C	32	17	40	9	20	12	0
Air Temperature F							
Water Temperature C	17	14	20	8	16	9	1
Water Temperature F							
pH, S. U.	4.9	5.4	6.4	5.8	6.7	6.2	6.4
Dissolved Oxygen, mg/L	9	8	10	7	8	8	7
Specific Conductance	650	485	350	390	750	650	400
Nitrate, mg/L	0.44	4.4	1.3	0.52	0	0	1.3
Total Phosphate, mg/L	8	0.2	0	1	1	1	0.4
Sulfate, mg/L	200	250	200	0	0	0	200
Total Alkalinity, mg/L as CaCO3	10	20	10	20	20	15	20

NOTE: An explanation of the stream habitat assessment can be found in the "Water Quality Monitoring Field Manual For The Pennsylvania Senior Environment Corps", page 72

Table 10b
Summary of Data From The Pennsylvania Environment Corps (PaSEC)
Stream Description And Water Quality Data For Leonard Run
Site ID 746
(Continued)

Water Body Name	Leonard Run	Leonard Run	Leonard Run	Leonard Run	Leonard Run	Leonard Run	Leonard Run
Site ID	746	746	746	746	746	746	746
Monitor Date	5/30/2002	8/29/2002	7/2/2003	8/21/2003	10/9/2003	3/4/2004	6/10/2004
River Mile Index	20.05	20.05	20.05	20.05	20.05	20.05	20.05
Type of Water Body	stream	stream	stream	stream	stream	stream	stream
Area	30	30	30	30	30	30	30
Features							
Water Appearance	e	r	clear	clear	clear	dy	other
Note		deposits					white-gray
Soil Odors	musty	earthy	earthy	wadable	non-wadable	wadable	wadable
Soil Odors Note							
Sediment Deposits	sand	sludge	sludge	sludge	other	sand	sludge
Sediment Deposits Note		aluminum sludge and gravel	gravel		high aluminum dropout	gravel	coal fines?
Stream Type	meandering	meandering pool / riffle	meandering pool / riffle	meandering pool / riffle	meandering pool / riffle	meandering pool / riffle	meandering pool / riffle
Dams							
High Water Mark							
Highwater Estimate							
Stream Bank Cross- Section Shape	rectangular	U	U	U	U	U	U
Stream Bank Erosion	extensive	extensive	extensive	occasional	extensive	extensive	extensive
Bottom							
% Bedrock							
% Boulder		5			10	10	10
% Cobble	50	75	50	80	50	70	70
% Gravel	40	5	20	5	20	10	10
% Sand	5	5	10	10	5	5	5
% Silt	1		10				
% Clay		5					
% Other					5		
other note					not specified		
Organic Stream Bottom							
% Muck-mud		2	2	1			
% Pulpy peat				1	2	2	
% Fibrous peat			2	1	3	2	
% Detritus		2	1				5
% Logs limbs	4	1	2	2	5	1	
% Marl							
% Other			3				
Other description			unidentified				
Non Wadable							

NOTE: An explanation of the stream habitat assessment can be found in the "Water Quality Monitoring Field Manual For The Pennsylvania Senior Environment Corps", page 72

Table 10b
Summary of Data From The Pennsylvania Environment Corps (PaSEC)
Stream Description And Water Quality Data For Leonard Run
Site ID 746
(Continued)

Site ID	746	746	746	746	746	746	746
Monitor Date	5/30/2002	8/29/2002	7/2/2003	8/21/2003	10/9/2003	3/4/2004	6/10/2004
Land Use							
% Wetlands			5				
% Forest	90	80	80	80	30	60	80
% Cropland							
% Pasture							
% Residential							
% Commercial							
% Industrial	10						
% Unused abandoned							
% Overgrown shrub and small trees		20	15	20	70	40	20
% Other							
Other Land Use Note							
Precipitation current	clear	clear	clear	clear	clear	overcast	overcast
Precipitation recent	clear	showers	clear	clear	clear	clear	clear
Water Odors	musty	earthy	earthy	none	none	none	none
Water Odors Note							
Stream Width	6.6	1	1.6	5	2.4	5.2	1.6
Non-Wadable							
Stream Width Note							
Stream Depth	0.1	0.07	0.106	0.148	0.112	0.212	0.114
Non-Wadable							
Stream depth note							
Surface Velocity	0.65	0.48	0.62	0.43	0.92	1.2	0.89
Surface Velocity Note							
Stream Flow Volume or Discharge	0.343	0.027	0.09	0.25	0.199	1.04	0.129
USGS Gaging							
Air Temperature C	22	19	20	24	9	5	
Air Temperature F							
Water Temperature C	14	15	15	17	9	4	
Water Temperature F							
pH, S. U.	5.3	6.6	6.5	7	5.1	6.2	5.7
Dissolved Oxygen, mg/L	8	6	9	9	0.8	12	9
Specific Conductance	390	350	500	180	300	170	330
Nitrate, mg/L	0.44	0.08	0.44	0	0.26	3.1	0
Total Phosphate, mg/L	0	0	0	0.1	0.1	0.1	0.3
Sulfate, mg/L	0	200	200	50	150	80	150
Total Alkalinity, mg/L as CaCO3	20	10	10	45	15	15	60

NOTE: An explanation of the stream habitat assessment can be found in the "Water Quality Monitoring Field Manual For The Pennsylvania Senior Environment Corps", page 72

Table 10c
Summary of Data From The Pennsylvania Environment Corps (PaSEC)
Stream Description And Water Quality Data For Leonard Run
Site ID 746
(Continued)

Water Body Name	Leonard Run	Leonard Run	Leonard Run	Leonard Run	Leonard Run	Leonard Run	Leonard Run
Site ID	746	746	746	746	746	746	746
Monitor Date	9/23/2004	6/7/2005	9/13/2005	4/6/2006	8/17/2006	6/28/2007	9/20/2007
River Mile Index	20.05	20.05	20.05	20.05	20.05	20.05	20.05
Type of Water Body	stream	stream	stream	stream	stream	stream	stream
Length of Assessed Area	30	30	30	30	30	30	30
Features							
Water Appearance	clear	clear	clear	clear	uddy	orange/red	e
Water Appearance Note							
Soil Odors	wadable	wadable	wadable	spicy	earthy	none	none
Soil Odors Note							
Sediment Deposits	none	none	none	none	sludge	other	other
Sediment Deposits Note						iron oxide	iron and aluminum
Stream Type	meandering	meandering pool / riffle	meandering	meandering pool / riffle	meandering	meandering pool / riffle	meandering pool / riffle
Dams				no	no	no	no
High Water Mark							
Highwater Estimate							
Stream Bank Cross-Section Shape	rectangular	U	rectangular	rectangular	rectangular	rectangular	rectangular
Stream Bank Erosion	occasional	extensive	occasional	extensive	occasional	extensive	extensive
Bottom							
% Bedrock							
% Boulder				30	10	10	5
% Cobble		20	35	50	75	50	75
% Gravel		10	20	15	5	30	15
% Sand		10		1			
% Silt		20	35		5	5	
% Clay				2	2	3	3
% Other	99						
other note	not specified						
Organic Stream Bottom							
%_Muck-mud		20		1	2		1
% Pulpy peat							
% Fibrous peat							
% Detritus			5				
% Logs limbs		20	5	1	1	2	1
% Marl							
% Other	1						
Other description	not specified						
Non Wadable							

NOTE: An explanation of the stream habitat assessment can be found in the "Water Quality Monitoring Field Manual For The Pennsylvania Senior Environment Corps", page 72

Table 10c
Summary of Data From The Pennsylvania Environment Corps (PaSEC)
Stream Description And Water Quality Data For Leonard Run
Site ID 746
(Continued)

Site ID	746	746	746	746	746	746	746
Monitor Date	9/23/2004	6/7/2005	9/13/2005	4/6/2006	8/17/2006	6/28/2007	9/20/2007
Land Use							
% Wetlands		20					
% Forest			90	50	100	50	100
% Cropland							
% Pasture							
% Residential							
% Commercial							
% Industrial							
% Unused abandoned							
% Overgrown shrub and small trees		80	10	50		50	
% Other	100						
Other Land Use Note	not specified						
Precipitation current	clear	clear	clear	clear	clear	storm	clear
Precipitation recent	clear	storm	clear	showers	clear	overcast	clear
Water Odors	none	none	none	spicy	none	other	none
Water Odors Note							
Stream Width	2.3	0.35		1.4	1	1.2	1.1
Non-Wadable			non-wadable				
Stream Width Note							
Stream Depth	0.146	0.1		0.1	0.07	0.06	0.05
Non-Wadable			non-wadable				
Stream depth note							
Surface Velocity	0.73	0.35		0.87	0.76	0.88	0.84
Surface Velocity Note							
Stream Flow Volume or Discharge	0.197	0.027		0.097	0.043	0.05	0.036
USGS Gaging							
Air Temperature C	11	25	22	5	18	19	16
Air Temperature F							
Water Temperature C	13	18	17	6	14	16	12
Water Temperature F							
pH, S. U.	6.7	7.1	7.2	5.9	6	6.3	5.9
Dissolved Oxygen, mg/L	9	7	10	10	8	9	10
Specific Conductance	300	450	575	350	400	400	495
Nitrate, mg/L	0.8	0	0	0.44	0.44	0.44	0.44
Total Phosphate, mg/L	0	0.1	0	0.1	0.7	0.6	0.5
Sulfate, mg/L	200	200	200	200	>200	>200	>200
Total Alkalinity, mg/L as CaCO3	15	5	105	15	15	60	10

NOTE: An explanation of the stream habitat assessment can be found in the "Water Quality Monitoring Field Manual For The Pennsylvania Senior Environment Corps", page 72

Table 11a
Summary Of Data From The Pennsylvania Environment Corps (PaSEC)
Stream Description And Water Quality Data For Little Yellow Creek
Site ID 751

Water Body Name	Little Yellow Creek	Little Yellow Creek	Little Yellow Creek	Little Yellow Creek	Little Yellow Creek	Little Yellow Creek	Little Yellow Creek
Site ID	751	751	751	751	751	751	751
Monitor Date	4/13/2000	5/4/2000	7/8/2000	8/11/2000	10/13/2000	2/9/2001	3/30/2001
River Mile Index	5.8	5.8	5.8	5.8	5.8	5.8	5.8
Type of Water Body	stream	stream	stream	stream	stream	stream	stream
Length of Assessed Area	30	30	30	30	30	30	30
Features							
Water Appearance	clear	clear	clear	clear	clear	other	clear
Water Appearance Note						murky	
Soil Odors	non-wadable	non-wadable	non-wadable	non-wadable	non-wadable	non-wadable	non-wadable
Soil Odors Note							
Sediment Deposits	none	none	none	none	none	none	none
Sediment Deposits Note							
Stream Type	meandering	meandering	meandering	meandering	meandering	meandering	meandering
Dams							no
High Water Mark		0.25	2.5	0.25	0.25	0.5	0.25
Highwater Estimate							
Stream Bank Cross-Section Shape	undercut	undercut	undercut	undercut	undercut	undercut	undercut
Stream Bank Erosion	occasional	occasional	occasional	none	none	occasional	none
Inorganic Stream Bottom							
% Bedrock		30		10	10	10	10
% Boulder		20	30				
% Cobble		20	50	60	60	60	60
% Gravel							
% Sand							
% Silt							
% Clay		10		15	15	15	15
% Other							
other note							
Organic Stream Bottom							
%_Muck-mud							
% Pulpy peat							
% Fibrous peat							
% Detritus		10	10	10	10	10	10
% Logs limbs		10	10	5	5	5	5
% Marl							
% Other							
Other description							
Non Wadable	non-wadable						

NOTE: An explanation of the stream habitat assessment can be found in the "Water Quality Monitoring Field Manual For The Pennsylvania Senior Environment Corps", page 72

Table 11a
Summary of Data From The Pennsylvania Environment Corps (PaSEC)
Stream Description And Water Quality Data For Little Yellow Creek
Site ID 751
(Continued)

Site ID	751	751	751	751	751	751	751
Monitor Date	4/13/2000	5/4/2000	7/8/2000	8/11/2000	10/13/2000	2/9/2001	3/30/2001
Land Use							
% Wetlands							
% Forest		50	50	50	50	50	50
% Cropland							
% Pasture							
% Residential							
% Commercial							
% Industrial							
% Unused abandoned		40	40	40	40	40	40
% Overgrown shrub and small trees		10	10	10	10	10	10
% Other	100						
Other Land Use Note	no % listed						
Precipitation current	clear	clear	clear	overcast	clear	overcast	overcast
Precipitation recent	overcast	clear	clear	overcast	clear	overcast	overcast
Water Odors		none	none	none	none	none	none
Water Odors Note							
Stream Width		3.03	0.98	1.27		3.66	3.31
Non-Wadable	non-wadable				non-wadable		
Stream Width Note							
Stream Depth		0.95	0.06	0.14		0.238	0.162
Non-Wadable	non-wadable				non-wadable		
Stream depth note							
Surface Velocity		0.31	0.29	0.21		0.54	0.45
Surface Velocity Note							
Stream Flow Volume or Discharge		0.12	0.0135	0.037		0.36	0.193
USGS Gaging							
Air Temperature C	6	25	21	23	15	14	5
Air Temperature F							
Water Temperature C	4	15	15	18	8	5	4
Water Temperature F							
pH, S. U.	7	7.8	7.9	7.9	7.9	6.6	7.3
Dissolved Oxygen, mg/L	10	8	9	8	9	9	10
Specific Conductance	109	120	288	247	148	126	134
Nitrate, mg/L	0.96	0.44	0.88	0.66	0.88	2.6	0.88
Total Phosphate, mg/L	0	0	0	0	0	0	0
Sulfate, mg/L	50	57	125	125	70	50	55
Total Alkalinity, mg/L as CaCO3	20	30	50	45	60	20	25

NOTE: An explanation of the stream habitat assessment can be found in the "Water Quality Monitoring Field Manual For The Pennsylvania Senior Environment Corps", page 72

Table 11b
Summary of Data From The Pennsylvania Environment Corps (PaSEC)
Stream Description And Water Quality Data For Little Yellow Creek
Site ID 751
(Continued)

Water Body Name	Little Yellow Creek	Little Yellow Creek	Little Yellow Creek	Little Yellow Creek	Little Yellow Creek	Little Yellow Creek	Little Yellow Creek
Site ID	751	751	751	751	751	751	751
Monitor Date	4/28/2001	6/15/2001	7/23/2001	9/29/2001	10/29/2001	11/18/2001	1/29/2002
River Mile Index	5.8	5.8	5.8	5.8	5.8	5.8	5.8
Type of Water Body	stream	stream	stream	stream	stream	stream	stream
Length of Assessed Area	30	30	30	30	30	30	30
Features							
Water Appearance	clear	clear	clear	clear	clear	clear	clear
Water Appearance Note							
Soil Odors	non-wadable	non-wadable	non-wadable	non-wadable	non-wadable	non-wadable	non-wadable
Soil Odors Note							
Sediment Deposits	none	none	none	none	none	none	none
Sediment Deposits Note							
Stream Type	meandering	meandering	meandering	meandering	meandering	meandering	meandering
Dams	no	no					
High Water Mark	0.25	0.25			0.25	0.25	
Highwater Estimate							
Stream Bank Cross-Section Shape	undercut	rectangular	rectangular	undercut	rectangular	undercut	undercut
Stream Bank Erosion	occasional	none	none	none	none	none	none
Inorganic Stream Bottom							
% Bedrock	30	30	30	30	30	30	30
% Boulder							
% Cobble	40	40	40	40	40	40	40
% Gravel							
% Sand							
% Silt							
% Clay	15	15	15	15	15	15	15
% Other							
other note							
Organic Stream Bottom							
% Muck-mud							
% Pulpy peat							
% Fibrous peat							
% Detritus	10	10	10	10	10	10	10
% Logs limbs	5	5	5	5	5	5	5
% Marl							
% Other							
Other description							
Non Wadable							

NOTE: An explanation of the stream habitat assessment can be found in the "Water Quality Monitoring Field Manual For The Pennsylvania Senior Environment Corps", page 72

Table 11b
Summary of Data From The Pennsylvania Environment Corps (PaSEC)
Stream Description And Water Quality Data For Little Yellow Creek
Site ID 751
(Continued)

Site ID	751	751	751	751	751	751	751
Monitor Date	4/28/2001	6/15/2001	7/23/2001	9/29/2001	10/29/2001	11/18/2001	1/29/2002
Land Use							
% Wetlands							
% Forest	60	60	60	60	60	60	60
% Cropland							
% Pasture							
% Residential							
% Commercial							
% Industrial							
% Unused abandoned	10	10	10	10	10	10	10
% Overgrown shrub and small trees	30	30	30	30	30	30	30
% Other							
Other Land Use Note							
Precipitation current	clear	clear	clear	clear	clear	clear	overcast
Precipitation recent	clear	clear	clear	overcast	clear	clear	clear
Water Odors	none	none	none	none	none	none	none
Water Odors Note							
Stream Width	3.43	1.74	1.47	1.66	1.48		3.32
Non-Wadable						non-wadable	
Stream Width Note							
Stream Depth	0.15	0.08	0.06	0.06	0.04		0.13
Non-Wadable						non-wadable	
Stream depth note							
Surface Velocity	0.4	0.28	0.24	0.13	0.15		0.54
Surface Velocity Note							
Stream Flow Volume or Discharge	0.16	0.024	0.017	0.009	0.0076		0.19
USGS Gaging							
Air Temperature C	10	28	24	13	10	15	11
Air Temperature F							
Water Temperature C	8	20	18	11	5	8	7
Water Temperature F							
pH, S. U.	7.3	8	7.3	7.4	6.7	6.9	6.8
Dissolved Oxygen, mg/L	9	7	7	8	7	7	11
Specific Conductance	157	266	458	377	379	333	127
Nitrate, mg/L	0.02	0.61	0.79	0.31	0	0.6	1.6
Total Phosphate, mg/L	0	0	0	0.54	0.1	0	0.1
Sulfate, mg/L	50	125	0	175	105	160	52
Total Alkalinity, mg/L as CaCO3	25	40	60	35	25	30	15
Notes On This Monitoring Site	7/23/01 - sulfates exceed upper limits	7/23/01 - sulfates exceed upper limits	7/23/01 - sulfates exceed upper limits	7/23/01 - sulfates exceed upper limits	7/23/01 - sulfates exceed upper limits	7/23/01 - sulfates exceed upper limits	7/23/01 - sulfates exceed upper limits

NOTE: An explanation of the stream habitat assessment can be found in the "Water Quality Monitoring Field Manual For The Pennsylvania Senior Environment Corps", page 72

Table 11c
Summary of Data From The Pennsylvania Environment Corps (PaSEC)
Stream Description And Water Quality Data For Little Yellow Creek
Site ID 751
(Continued)

Water Body Name	Little Yellow Creek	Little Yellow Creek	Little Yellow Creek	Little Yellow Creek
Site ID	751	751	751	751
Monitor Date	2/25/2002	4/26/2002	5/15/2002	6/9/2002
River Mile Index	5.8	5.8	5.8	5.8
Type of Water Body	stream	stream	stream	stream
Length of Assessed Area	30	30	30	30
Features				
Water Appearance	clear	clear	clear	clear
Water Appearance Note				
Soil Odors	non-wadable	non-wadable	non-wadable	non-wadable
Soil Odors Note				
Sediment Deposits	none	none	none	none
Sediment Deposits Note				
Stream Type	meandering	meandering	meandering pool / riffle	meandering
Dams				
High Water Mark				
Highwater Estimate				
Stream Bank Cross-Section Shape	undercut	undercut	undercut	undercut
Stream Bank Erosion	none	none	none	none
Inorganic Stream Bottom				
% Bedrock	30	30	30	30
% Boulder				
% Cobble	40	40	40	40
% Gravel				
% Sand				
% Silt				
% Clay	15	15	15	15
% Other				
other note				
Organic Stream Bottom				
% Muck-mud				
% Pulpy peat				
% Fibrous peat				
% Detritus	10	10	10	10
% Logs limbs	5	5	5	5
% Marl				
% Other				
Other description				
Non Wadable				

Table 11c
Summary of Data From The Pennsylvania Environment Corps (PaSEC)
Stream Description And Water Quality Data For Little Yellow Creek
Site ID 751
(Continued)

Site ID	751	751	751	751
Monitor Date	2/25/2002	4/26/2002	5/15/2002	6/9/2002
Land Use				
% Wetlands				
% Forest	60	60	60	60
% Cropland				
% Pasture				
% Residential				
% Commercial				
% Industrial				
% Unused abandoned	10	10	10	40
% Overgrown shrub and small trees	30	30	30	
% Other				
Other Land Use Note				
Precipitation current	clear	clear	clear	clear
Precipitation recent	clear	clear	rain	clear
Water Odors	none	none	none	none
Water Odors Note				
Stream Width	3.28	1.62	5.21	
Non-Wadable				non-wadable
Stream Width Note				
Stream Depth	0.12	0.121	0.22	
Non-Wadable				non-wadable
Stream depth note				
Surface Velocity	0.45	0.53	0.6	
Surface Velocity Note				
Stream Flow Volume or Discharge	0.014	0.079	0.56	
USGS Gaging				
Air Temperature C	16	12	14	27
Air Temperature F				
Water Temperature C	4	8	11	17
Water Temperature F				
pH, S. U.	7.2	6.6	7.3	6.7
Dissolved Oxygen, mg/L	9	9	10	10
Specific Conductance	198	117	86	135
Nitrate, mg/L	1.2	0.52	0.88	1.1
Total Phosphate, mg/L	0.46	2	1.84	0.28
Sulfate, mg/L	50	52	50	62
Total Alkalinity, mg/L as CaCO3	20	30	15	20
Notes On This Monitoring Site	7/23/01 - sulfates exceed upper limits	7/23/01 - sulfates exceed upper limits	7/23/01 - sulfates exceed upper limits	7/23/01 - sulfates exceed upper limits

Table 12
Summary Of Data From The Pennsylvania Environment Corps (PaSEC)
Stream Description And Water Quality Data For Little Yellow Creek
Site ID 752

Water Body Name	Little Yellow Creek	Little Yellow Creek	Little Yellow Creek	Little Yellow Creek	Little Yellow Creek	Little Yellow Creek
Site ID	752	752	752	752	752	752
Monitor Date	4/13/2000	5/14/2000	7/8/2000	8/11/2000	10/13/2000	2/9/2001
River Mile Index	6.6	6.6	6.6	6.6	6.6	6.6
Type of Water Body	stream	stream	stream	stream	stream	stream
Length of Assessed Area	30	30	30	30	30	30
Features						
Water Appearance		clear	orange/red	clear	clear	muddy/cloudy
Water Appearance Note						
Soil Odors	non-wadable	non-wadable	sulfur	non-wadable	non-wadable	non-wadable
Soil Odors Note						
Sediment Deposits	other	other	other	other	other	other
Sediment Deposits Note	light amt. of red deposit	very light orange/red iron deposits	iron deposits (red-orange)	red (iron)	light iron deposits (red)	light iron deposits on rocks
Stream Type	meandering	meandering	meandering	meandering	meandering	meandering
Dams	no		no			
High Water Mark	0.5	0.5	0.5	0.5	0.5	0.5
Highwater Estimate						
Stream Bank Cross-Section Shape	undercut	undercut	undercut	undercut	undercut	undercut
Stream Bank Erosion	occasional	occasional	occasional	occasional	occasional	occasional
Inorganic Stream Bottom						
% Bedrock	30	30		10	10	10
% Boulder	20	20	30			
% Cobble	20	20	50	60	60	60
% Gravel						
% Sand						
% Silt						
% Clay	10	10		15	15	15
% Other						
other note						
Organic Stream Bottom						
% Muck-mud						
% Pulpy peat						
% Fibrous peat						
% Detritus	10	10	10	10	10	10
% Logs limbs	10	10	10	5	5	5
% Marl						
% Other						
Other description						
Non Wadable						

NOTE: An explanation of the stream habitat assessment can be found in the "Water Quality Monitoring Field Manual For The Pennsylvania Senior Environment Corps", page 72

Table 12
Summary of Data From The Pennsylvania Environment Corps (PaSEC)
Stream Description And Water Quality Data For Little Yellow Creek
Site ID 752
(Continued)

Site ID	752	752	752	752	752	752
Monitor Date	4/13/2000	5/14/2000	7/8/2000	8/11/2000	10/13/2000	2/9/2001
Land Use						
% Wetlands						
% Forest						
% Cropland						
% Pasture						
% Residential				30		
% Commercial	30	30				
% Industrial	30	30	30		30	30
% Unused abandoned		40	30	30	30	30
% Overgrown shrub and small trees	40		40	40	40	40
% Other						
Other Land Use Note						
Precipitation current	overcast	clear	clear	overcast	clear	overcast
Precipitation recent	overcast	clear	clear	overcast	clear	overcast
Water Odors	none	none	sulfur	none	none	none
Water Odors Note						
Stream Width		2.72	0.79	0.78		2.5
Non-Wadable	non-wadable				non-wadable	
Stream Width Note						
Stream Depth		0.11	0.08	0.06		0.25
Non-Wadable	non-wadable				non-wadable	
Stream depth note						
Surface Velocity		0.45	0.48	0.49		0.6
Surface Velocity Note						
Stream Flow Volume or Discharge		0.11	0.02	0.018		0.3
USGS Gaging						
Air Temperature C	66	25	18	26	15	16
Air Temperature F						
Water Temperature C	4	12	14	18	9	5
Water Temperature F						
pH, S. U.	6.9	7.1	7.6	7.5	8	6.5
Dissolved Oxygen, mg/L	8	9	8	8	10	8
Specific Conductance	121	179	323	299	161	140
Nitrate, mg/L	0.88	0.52	0.44	0.44	0.52	2.3
Total Phosphate, mg/L	0	0	0	0	0	0
Sulfate, mg/L	50	60	175	190	71	50
Total Alkalinity, mg/L as CaCO ₃	20	30	60	50	80	20

NOTE: An explanation of the stream habitat assessment can be found in the "Water Quality Monitoring Field Manual For The Pennsylvania Senior Environment Corps", page 72

Table 8
Summary Of Data From Pennsylvania Senior Environment Corps (PaSEC)
Stream Description And Water Quality Data For Gillhouse Run
Site ID 750

Water Body Name	Gillhouse Run	Gillhouse Run	Gillhouse Run	Gillhouse Run	Gillhouse Run	Gillhouse Run	Gillhouse Run	Gillhouse Run
Site ID	750	750	750	750	750	750	750	750
Monitor Date	8/19/1999	10/21/1999	10/27/2000	4/5/2001	9/13/2001	2/21/2002	5/9/2002	9/26/2002
River Mile Index	2.54	2.54	2.54	2.54	2.54	2.54	2.54	2.54
Type of Water Body	stream	stream	stream	stream	stream	stream	stream	stream
Length of Assessed Area	3	3	3	3	3	3	3	3
Features								
Water Appearance	clear	clear	clear	clear	clear	clear	muddy/cloudy	clear
Water Appearance Note								
Soil Odors	non-wadable	earthy	earthy	musty	musty	musty	earthy	non-wadable
Soil Odors Note								
Sediment Deposits	none	sand	sand	sand	sand	sand	sand	other
Sediment Deposits Note		gravel	gravel	gravel			gravel	some traces of iron
Stream Type	straight	meandering pool / riffle	pool/riffle	straight	meandering	meandering pool / riffle	meandering pool / riffle	meandering pool / riffle
Dams	no	no						
High Water Mark		0.5	1.5				1	
Highwater Estimate								
Stream Bank Cross-Section Shape	undercut	rectangular	undercut	rectangular	rectangular	undercut	rectangular	rectangular
Stream Bank Erosion	extensive	occasional	occasional	occasional	extensive	extensive	occasional	extensive
Inorganic Stream Bottom								
% Bedrock								
% Boulder	30	20	50	20	40	10		10
% Cobble	30	50	20	30	20	65	75	60
% Gravel	10	5	10	15	25	20	15	20
% Sand	10	5	10	15	10	2	10	1
% Silt	5	5	3	5	2	2		1
% Clay								
% Other								
other note								
Organic Stream Bottom								
%_Muck-mud		5			1			
% Pulpy peat	5			5				1
% Fibrous peat	5				1			
% Detritus	3	10	5	10				
% Logs limbs	2		2		1	1		2
% Marl								
% Other								5
Other description								
Non Wadable								

NOTE: An explanation of the stream habitat assessment can be found in the "Water Quality Monitoring Field Manual For The Pennsylvania Senior Environment Corps", page 72

Table 8
Summary of Data From The Pennsylvania Environment Corps (PaSEC)
Stream Description And Water Quality Data For Gillhouse Run
Site ID 750
(Continued)

Site ID	750	750	750	750	750	750	750	750
Monitor Date	8/19/1999	10/21/1999	10/27/2000	4/5/2001	9/13/2001	2/21/2002	5/9/2002	9/26/2002
Land Use								
% Wetlands	10						10	
% Forest	80	90	80	80	100	75	70	90
% Cropland								
% Pasture								
% Residential								
% Commercial								
% Industrial								
% Unused abandoned	10			20				
% Overgrown shrub and small trees		10	20			25	20	10
% Other								
Other Land Use Note								
Precipitation current	overcast	clear	clear	clear	clear	showers	overcast	rain
Precipitation recent	overcast	clear	clear	clear	clear	rain	rain	clear
Water Odors	none	none	none	none	none	none	earthy	none
Water Odors Note								
Stream Width	7.32	38.5	3.04	3.3	1	3.6	5.2	1.2
Non-Wadable								
Stream Width Note								
Stream Depth	0.508	0.91	0.177	0.87	0.08	0.18	0.25	0.058
Non-Wadable								
Stream depth note								
Surface Velocity		0.23	0.4	0.5	0.08	0.62	0.85	0.35
Surface Velocity Note								
Stream Flow Volume or Discharge		6.44	0.172	1.16	0.005	0.321	0.88	0.019
USGS Gaging								
Air Temperature C	26	8	18	6	16		12	16
Air Temperature F								
Water Temperature C	17	5	12	4	15		17	14
Water Temperature F								
pH, S. U.	5.9	6.1	6.3	6.1	6.2	6.5	6.4	6.6
Dissolved Oxygen, mg/L	6	6	8	8	7	8	10	10
Specific Conductance	600	800	600	152	185	197	75	60
Nitrate, mg/L	0.88	0.79	0.96	1.7	0.18	1.3	0.35	0.35
Total Phosphate, mg/L	0.08	0.1	0.1	0.4	1	0.4	0.44	0.2
Sulfate, mg/L	50	50	50	50	50	50	50	50
Total Alkalinity, mg/L as CaCO ₃	20	20	40	5	40	20	20	20

NOTE: An explanation of the stream habitat assessment can be found in the "Water Quality Monitoring Field Manual For The Pennsylvania Senior Environment Corps", page 72

Table 9a
Summary Of Data From The Pennsylvania Environment Corps (PaSEC)
Stream Description And Water Quality Data For Hogan Run
Site ID 810

Water Body Name	Hogan Run	Hogan Run	Hogan Run	Hogan Run	Hogan Run	Hogan Run	Hogan Run
Site ID	810	810	810	810	810	810	810
Monitor Date	7/24/2000	10/5/2000	2/22/2001	5/10/2001	7/26/2001	12/6/2001	4/11/2002
River Mile Index	16.2	16.2	16.2	16.2	16.2	16.2	16.2
Type of Water Body	stream	stream	stream	stream	stream	stream	stream
Length of Assessed Area	10	10	10	10	10	10	10
Features							
Water Appearance	muddy/ cloudy	clear	clear	clear	clear	clear	clear
Water Appearance Note							
Soil Odors	non-wadable	earthy	non-wadable	non-wadable	moldy	non-wadable	non-wadable
Soil Odors Note							
Sediment Deposits	sludge	sand	sand	sand	sand	none	sand
Sediment Deposits Note	gravel	mud	gravel	gravel			gravel
Stream Type	straight	meandering g pool / riffle	meandering pool / riffle	straight	meandering pool / riffle	meandering pool / riffle	meandering pool / riffle
Dams	no	no	no				
High Water Mark	1	1.5	1	1.5			
Highwater Estimate							
Stream Bank Cross-Section Shape	rectangular	undercut	undercut	undercut	rectangular	rectangular	U
Stream Bank Erosion	extensive	extensive	extensive	extensive	extensive	extensive	extensive
Inorganic Stream Bottom							
% Bedrock							
% Boulder	10	30	5	30	25	5	5
% Cobble	10	50	50	30	50	60	75
% Gravel	20	5	15	10	15	10	10
% Sand	30	5	20	5	2	5	5
% Silt	10		1	20	5		1
% Clay	10	5				15	
% Other							
other note							
Organic Stream Bottom							
%_Muck-mud						3	
% Pulpy peat	1			1			1
% Fibrous peat	1	2	1	1		1	2
% Detritus	2	3	5	2			
% Logs limbs	5		3	1	3	1	1
% Marl							
% Other	1						
Other description							
Non Wadable							

NOTE: An explanation of the stream habitat assessment can be found in the "Water Quality Monitoring Field Manual For The Pennsylvania Senior Environment Corps", page 72

Table 9a
Summary of Data From The Pennsylvania Environment Corps (PaSEC)
Stream Description And Water Quality Data For Hogan Run
Site ID 810
(Continued)

Site ID	810	810	810	810	810	810	810
Monitor Date	7/24/2000	10/5/2000	2/22/2001	5/10/2001	7/26/2001	12/6/2001	4/11/2002
Land Use							
% Wetlands							
% Forest	40	80	80	90	90	90	80
% Cropland							
% Pasture							
% Residential							
% Commercial							
% Industrial					10		
% Unused abandoned	50						
% Overgrown shrub and small trees	10	20	20	10		10	20
% Other							
Other Land Use Note							
Precipitation current	overcast	showers	overcast	clear	showers	showers	clear
Precipitation recent	rain	showers	clear	clear	rain	clear	clear
Water Odors	none	none	none	none	none	none	none
Water Odors Note							
Stream Width	3.2	2.25	9.8	1.5	1.5	2.2	2.43
Non-Wadable							
Stream Width Note							
Stream Depth	0.07	0.07	0.127	0.045	0.06	0.07	0.182
Non-Wadable							
Stream depth note							
Surface Velocity	0.33	0.59	0.74	43	0.56	0.42	0.58
Surface Velocity Note							
Stream Flow Volume or Discharge	0.058	0.075	0.225	2.34	0.004	0.05	0.2
USGS Gaging							
Air Temperature C	20	13	-5	25	20	10	11
Air Temperature F							
Water Temperature C	17	15	0	12	17	8	6
Water Temperature F							
pH, S. U.	5.9	6.6	6.2	5.6	6.3	6.4	5.9
Dissolved Oxygen, mg/L	5	8	9	8	8	8	10
Specific Conductance	600	800	63	102	124	115	100
Nitrate, mg/L	1.3	1.3	3	2.2	0.44	0.88	0.88
Total Phosphate, mg/L	0.2	0.1	0.2	0.7	1	1	0.5
Sulfate, mg/L	50	50	50	50	50	50	50
Total Alkalinity, mg/L as CaCO3	20	40	10	15	15	20	20
Notes On This Monitoring Site							

NOTE: An explanation of the stream habitat assessment can be found in the "Water Quality Monitoring Field Manual For The Pennsylvania Senior Environment Corps", page 72

Table 9b
Summary of Data From The Pennsylvania Environment Corps (PaSEC)
Stream Description And Water Quality Data For Hogan Run
Site ID 810
(Continued)

Water Body Name	Run	Hogan Run	Hogan Run	Hogan Run	Hogan Run	Hogan Run	Hogan Run
Site ID	810	810	810	810	810	810	810
Monitor Date	7/15/2002	10/10/2002	5/15/2003	10/30/2003	4/29/2004	4/21/2005	7/14/2005
River Mile Index	16.2	16.2	16.2	16.2	16.2	16.2	16.2
Type of Water Body	stream	stream	stream	stream	stream	stream	stream
Length of Assessed Area	10	10	10	10	10	10	10
Features							
Water Appearance	clear	clear	clear	clear	clear	clear	clear
Water Appearance Note							
Soil Odors	earthy	non-wadable	earthy	non-wadable	non-wadable	non-wadable	non-wadable
Soil Odors Note							
Sediment Deposits	none	none	none	sand	sand	sand	sand
Sediment Deposits Note				gravel	mud and gravel	gravel	gravel
Stream Type	meandering pool / riffle	meandering	meandering pool / riffle	meandering pool / riffle	meandering pool / riffle	meandering	meandering pool / riffle
Dams							
High Water Mark							1
Highwater Estimate							
Stream Bank Cross-Section Shape	rectangular	U	rectangular	U	U	U	U
Stream Bank Erosion	occasional	extensive	extensive	extensive	extensive	extensive	extensive
Inorganic Stream Bottom							
% Bedrock							
% Boulder	40	25	5	20	20	30	10
% Cobble	40	50	85	50	40	40	60
% Gravel	10	20	5	10	20	10	10
% Sand	2	2	1	10	2	10	5
% Silt	1						
% Clay	5	2	1	5			
% Other							
other note							
Organic Stream Bottom							
% Muck-mud					10		5
% Pulpy peat						3	3
% Fibrous peat				3	3		2
% Detritus	1		1		2	2	
% Logs limbs	1	1	2	2	3	5	5
% Marl							
% Other							
Other description							
Non Wadable							

NOTE: An explanation of the stream habitat assessment can be found in the "Water Quality Monitoring Field Manual For The Pennsylvania Senior Environment Corps", page 72

Table 9b
Summary of Data From The Pennsylvania Environment Corps (PaSEC)
Stream Description And Water Quality Data For Hogan Run
Site ID 810
(Continued)

Site ID	810	810	810	810	810	810	810
Monitor Date	7/15/2002	10/10/2002	5/15/2003	10/30/2003	4/29/2004	4/21/2005	7/14/2005
Land Use							
% Wetlands							
% Forest	90	100	100	80	80	80	70
% Cropland							
% Pasture							
% Residential							
% Commercial							
% Industrial							
% Unused abandoned							
% Overgrown shrub and small trees	10			20	20	20	30
% Other							
Other Land Use Note							
Precipitation current	clear	showers	showers	clear	clear	overcast	overcast
Precipitation recent	clear	overcast	showers	clear	clear	rain	rain
Water Odors	none	musty	none	none	none	none	none
Water Odors Note							
Stream Width	1.5	1.2	2	2.6	4.6	3.5	1.4
Non-Wadable							
Stream Width Note							
Stream Depth	0.05	0.08	0.16	0.152	0.162	0.134	0.068
Non-Wadable							
Stream depth note							
Surface Velocity	0.42	0.46	0.85	0.99	0.63	0.68	0.33
Surface Velocity Note							
Stream Flow Volume or Discharge	0.0025	0.33	0.217	0.312	0.375	0.255	0.025
USGS Gaging							
Air Temperature C	19		13	7	15	9	22
Air Temperature F							
Water Temperature C	17		10	7	8	10	17
Water Temperature F							
pH, S. U.	6.5	6.4	6.4	6.6	6.2	5.3	6
Dissolved Oxygen, mg/L	6	10	10	9	9	10	7
Specific Conductance	100	90	600	69	60	55	138
Nitrate, mg/L	0.44	0	0.44	0.42	0.66	0.44	0.88
Total Phosphate, mg/L	0.2	0.7	0	0	0.1	0.1	0
Sulfate, mg/L							
Total Alkalinity, mg/L as CaCO3	35	25	10	10	10	10	25

NOTE: An explanation of the stream habitat assessment can be found in the "Water Quality Monitoring Field Manual For The Pennsylvania Senior Environment Corps", page 72

Table 9c
Summary of Data From The Pennsylvania Environment Corps (PaSEC)
Stream Description And Water Quality Data For Hogan Run
Site ID 810
(Continued)

Water Body Name	Hogan Run	Hogan Run	Hogan Run	Hogan Run
Site ID	810	810	810	810
Monitor Date	5/11/2006	9/7/2006	3/29/2007	8/16/2007
River Mile Index	16.2	16.2	16.2	16.2
Type of Water Body	stream	stream	stream	stream
Length of Assessed Area	10	10	10	10
Features				
Water Appearance	clear	clear	clear	clear
Water Appearance Note				
Soil Odors	none	earthy	none	none
Soil Odors Note				
Sediment Deposits	none	none	none	none
Sediment Deposits Note				
Stream Type	meandering pool / riffle	meandering pool / riffle	meandering pool / riffle	meandering pool / riffle
Dams	no	no	no	no
High Water Mark				
Highwater Estimate				
Stream Bank Cross- Section Shape	rectangular	rectangular	rectangular	rectangular
Stream Bank Erosion	occasional	occasional	extensive	occasional
Inorganic Stream Bottom				
% Bedrock				
% Boulder	20	20	20	10
% Cobble	65	65	50	60
% Gravel	5	8	15	20
% Sand		1	2	2
% Silt	1	1		
% Clay	4	4	10	2
% Other				
other note				
Organic Stream Bottom				
% Muck-mud			1	
% Pulpy peat		1	1	2
% Fibrous peat			1	
% Detritus	5			
% Logs limbs				2
% Marl				
% Other				2
Other description				
Non Wadable				

NOTE: An explanation of the stream habitat assessment can be found in the "Water Quality Monitoring Field Manual For The Pennsylvania Senior Environment Corps", page 72

Table 9c
Summary of Data From The Pennsylvania Environment Corps (PaSEC)
Stream Description And Water Quality Data For Hogan Run
Site ID 810
(Continued)

Site ID	810	810	810	810
Monitor Date	5/11/2006	9/7/2006	3/29/2007	8/16/2007
Land Use				
% Wetlands				
% Forest	100	100	100	100
% Cropland				
% Pasture				
% Residential				
% Commercial				
% Industrial				
% Unused abandoned				
% Overgrown shrub and small trees				
% Other				
Other Land Use Note				
Precipitation current	overcast	showers	showers	showers
Precipitation recent	clear	clear	clear	showers
Water Odors	none	none	none	none
Water Odors Note				
Stream Width	1.7	1.9	3.5	1.7
Non-Wadable				
Stream Width Note				
Stream Depth	0.14	0.12	0.1144	0.08
Non-Wadable				
Stream depth note				
Surface Velocity	0.66	0.68	0.98	0.6
Surface Velocity Note				
Stream Flow Volume or Discharge	0.126	0.124	0.3	0.065
USGS Gaging				
Air Temperature C	15	15	3	20
Air Temperature F				
Water Temperature C	11	13	5	17
Water Temperature F				
pH, S. U.	6.3	6.2	5.8	6.4
Dissolved Oxygen, mg/L	9	9	9	7
Specific Conductance	60	0.07	60	85
Nitrate, mg/L	0.44	5.18	1.32	0.44
Total Phosphate, mg/L	ND	ND	0.1	0.6
Sulfate, mg/L	<50	<50	<50	<50
Total Alkalinity, mg/L as CaCO3	25	40	15	20
Other observations comments		total iron .6	acidity of 40 and total iron of .5	acidity 40; total iron 1

NOTE: An explanation of the stream habitat assessment can be found in the "Water Quality Monitoring Field Manual For The Pennsylvania Senior Environment Corps", page 72

Table 10a
Summary Of Data From The Pennsylvania Environment Corps (PaSEC)
Stream Description And Water Quality Data For Leonard Run
Site ID 746

Water Body Name	Leonard Run	Leonard Run	Leonard Run	Leonard Run	Leonard Run	Leonard Run	Leonard Run
Site ID	746	746	746	746	746	746	746
Monitor Date	8/26/1999	8/17/2000	1/18/2001	5/31/2001	8/23/2001	11/1/2001	1/31/2002
River Mile Index	20.05	20.05	20.05	20.05	20.05	20.05	20.05
Type of Water Body	stream	stream	stream	stream	stream	stream	stream
Area	30	30	30	30	30	30	30
Features							
Water Appearance	clear	milky/white	clear other	foamy milky/white	clear	milky/white	milky/white
Note			iron deposits				
Soil Odors	non-wadable	sulfur	musty	sulfur	sulfur	wadable	earthy
Soil Odors Note							
Sediment Deposits	none	sand	sludge	sludge	sludge	other	sand
Sediment Deposits Note		rocks coated with aluminum	gravel & silt		iron, aluminum	aluminum & iron deposits	
Stream Type	meandering	meandering pool / riffle	meandering pool / riffle	meandering	meandering pool / riffle	meandering	meandering braided
Dams		no	no				
High Water Mark		1.5	1	1.5		2	
Highwater Estimate							
Stream Bank Cross-Section Shape	U	rectangular	undercut	rectangular	U	undercut	rectangular
Stream Bank Erosion	extensive	extensive	extensive	extensive	extensive	extensive	extensive
Bottom							
% Bedrock	10						
% Boulder	10			5	10	4	5
% Cobble	30	50	50	50	60	20	60
% Gravel	25	10	15	10	15	60	25
% Sand	10	10		10	10		5
% Silt		10				10	2
% Clay		10					2
% Other		4					
other note		shale					
Organic Stream Bottom							
% Muck-mud	10	2	25			1	
% Pulpy peat						1	
% Fibrous peat		1			2		
% Detritus	5	2		5		1	
% Logs limbs		1		5	2	3	1
% Marl							
% Other			10	15	1		
Other description			mixture	aluminum sludge	Fe and Al sludge		
Non Wadable							

NOTE: An explanation of the stream habitat assessment can be found in the "Water Quality Monitoring Field Manual For The Pennsylvania Senior Environment Corps", page 72

Table 10a
Summary of Data From The Pennsylvania Environment Corps (PaSEC)
Stream Description And Water Quality Dat For Leonard Runa
Dite ID 746
(Continued)

Site ID	746	746	746	746	746	746	746
Monitor Date	8/26/1999	8/17/2000	1/18/2001	5/31/2001	8/23/2001	11/1/2001	1/31/2002
Land Use							
% Wetlands							
% Forest		50	80	80	40	50	
% Cropland							
% Pasture							
% Residential							
% Commercial							
% Industrial							
% Unused abandoned	60	10				10	50
% Overgrown shrub and small trees	40	40	20	20	60	40	50
% Other							
Other Land Use Note							
Precipitation current	clear	overcast	overcast	clear	overcast	clear	showers
Precipitation recent	clear	clear	overcast	clear	overcast	clear	rain
Water Odors	none	musty moldy	musty	sulfur	sulfur	other	spicy
Water Odors Note							
Stream Width		0.86	6.03	2.5	0.8	1.6	2.5
Non-Wadable	non-wadable						
Stream Width Note							
Stream Depth		8.13	0.07	0.038	0.062	0.062	0.16
Non-Wadable	non-wadable						
Stream depth note							
Surface Velocity		0.42	0.48	0.54	0.29	0.21	0.59
Surface Velocity Note							
Stream Flow Volume or Discharge		2.39	0.162	0.04	0.01	0.017	0.18
USGS Gaging							
Air Temperature C	32	17	40	9	20	12	0
Air Temperature F							
Water Temperature C	17	14	20	8	16	9	1
Water Temperature F							
pH, S. U.	4.9	5.4	6.4	5.8	6.7	6.2	6.4
Dissolved Oxygen, mg/L	9	8	10	7	8	8	7
Specific Conductance	650	485	350	390	750	650	400
Nitrate, mg/L	0.44	4.4	1.3	0.52	0	0	1.3
Total Phosphate, mg/L	8	0.2	0	1	1	1	0.4
Sulfate, mg/L	200	250	200	0	0	0	200
Total Alkalinity, mg/L as CaCO3	10	20	10	20	20	15	20

NOTE: An explanation of the stream habitat assessment can be found in the "Water Quality Monitoring Field Manual For The Pennsylvania Senior Environment Corps", page 72

Table 10b
Summary of Data From The Pennsylvania Environment Corps (PaSEC)
Stream Description And Water Quality Data For Leonard Run
Site ID 746
(Continued)

Water Body Name	Leonard Run	Leonard Run	Leonard Run	Leonard Run	Leonard Run	Leonard Run	Leonard Run
Site ID	746	746	746	746	746	746	746
Monitor Date	5/30/2002	8/29/2002	7/2/2003	8/21/2003	10/9/2003	3/4/2004	6/10/2004
River Mile Index	20.05	20.05	20.05	20.05	20.05	20.05	20.05
Type of Water Body	stream	stream	stream	stream	stream	stream	stream
Area	30	30	30	30	30	30	30
Features							
Water Appearance	e	r	clear	clear	clear	dy	other
Note		deposits					white-gray
Soil Odors	musty	earthy	earthy	wadable	non-wadable	wadable	wadable
Soil Odors Note							
Sediment Deposits	sand	sludge	sludge	sludge	other	sand	sludge
Sediment Deposits Note		aluminum sludge and gravel	gravel		high aluminum dropout	gravel	coal fines?
Stream Type	meandering	meandering pool / riffle	meandering pool / riffle	meandering pool / riffle	meandering pool / riffle	meandering pool / riffle	meandering pool / riffle
Dams							
High Water Mark							
Highwater Estimate							
Stream Bank Cross- Section Shape	rectangular	U	U	U	U	U	U
Stream Bank Erosion	extensive	extensive	extensive	occasional	extensive	extensive	extensive
Bottom							
% Bedrock							
% Boulder		5			10	10	10
% Cobble	50	75	50	80	50	70	70
% Gravel	40	5	20	5	20	10	10
% Sand	5	5	10	10	5	5	5
% Silt	1		10				
% Clay		5					
% Other					5		
other note					not specified		
Organic Stream Bottom							
% Muck-mud		2	2	1			
% Pulpy peat				1	2	2	
% Fibrous peat			2	1	3	2	
% Detritus		2	1				5
% Logs limbs	4	1	2	2	5	1	
% Marl							
% Other			3				
Other description			unidentified				
Non Wadable							

NOTE: An explanation of the stream habitat assessment can be found in the "Water Quality Monitoring Field Manual For The Pennsylvania Senior Environment Corps", page 72

Table 10b
Summary of Data From The Pennsylvania Environment Corps (PaSEC)
Stream Description And Water Quality Data For Leonard Run
Site ID 746
(Continued)

Site ID	746	746	746	746	746	746	746
Monitor Date	5/30/2002	8/29/2002	7/2/2003	8/21/2003	10/9/2003	3/4/2004	6/10/2004
Land Use							
% Wetlands			5				
% Forest	90	80	80	80	30	60	80
% Cropland							
% Pasture							
% Residential							
% Commercial							
% Industrial	10						
% Unused abandoned							
% Overgrown shrub and small trees		20	15	20	70	40	20
% Other							
Other Land Use Note							
Precipitation current	clear	clear	clear	clear	clear	overcast	overcast
Precipitation recent	clear	showers	clear	clear	clear	clear	clear
Water Odors	musty	earthy	earthy	none	none	none	none
Water Odors Note							
Stream Width	6.6	1	1.6	5	2.4	5.2	1.6
Non-Wadable							
Stream Width Note							
Stream Depth	0.1	0.07	0.106	0.148	0.112	0.212	0.114
Non-Wadable							
Stream depth note							
Surface Velocity	0.65	0.48	0.62	0.43	0.92	1.2	0.89
Surface Velocity Note							
Stream Flow Volume or Discharge	0.343	0.027	0.09	0.25	0.199	1.04	0.129
USGS Gaging							
Air Temperature C	22	19	20	24	9	5	
Air Temperature F							
Water Temperature C	14	15	15	17	9	4	
Water Temperature F							
pH, S. U.	5.3	6.6	6.5	7	5.1	6.2	5.7
Dissolved Oxygen, mg/L	8	6	9	9	0.8	12	9
Specific Conductance	390	350	500	180	300	170	330
Nitrate, mg/L	0.44	0.08	0.44	0	0.26	3.1	0
Total Phosphate, mg/L	0	0	0	0.1	0.1	0.1	0.3
Sulfate, mg/L	0	200	200	50	150	80	150
Total Alkalinity, mg/L as CaCO3	20	10	10	45	15	15	60

NOTE: An explanation of the stream habitat assessment can be found in the "Water Quality Monitoring Field Manual For The Pennsylvania Senior Environment Corps", page 72

Table 10c
Summary of Data From The Pennsylvania Environment Corps (PaSEC)
Stream Description And Water Quality Data For Leonard Run
Site ID 746
(Continued)

Water Body Name	Leonard Run	Leonard Run	Leonard Run	Leonard Run	Leonard Run	Leonard Run	Leonard Run
Site ID	746	746	746	746	746	746	746
Monitor Date	9/23/2004	6/7/2005	9/13/2005	4/6/2006	8/17/2006	6/28/2007	9/20/2007
River Mile Index	20.05	20.05	20.05	20.05	20.05	20.05	20.05
Type of Water Body	stream	stream	stream	stream	stream	stream	stream
Length of Assessed Area	30	30	30	30	30	30	30
Features							
Water Appearance	clear	clear	clear	clear	uddy	orange/red	e
Water Appearance Note							
Soil Odors	wadable	wadable	wadable	spicy	earthy	none	none
Soil Odors Note							
Sediment Deposits	none	none	none	none	sludge	other	other
Sediment Deposits Note						iron oxide	iron and aluminum
Stream Type	meandering	meandering pool / riffle	meandering	meandering pool / riffle	meandering	meandering pool / riffle	meandering pool / riffle
Dams				no	no	no	no
High Water Mark							
Highwater Estimate							
Stream Bank Cross-Section Shape	rectangular	U	rectangular	rectangular	rectangular	rectangular	rectangular
Stream Bank Erosion	occasional	extensive	occasional	extensive	occasional	extensive	extensive
Bottom							
% Bedrock							
% Boulder				30	10	10	5
% Cobble		20	35	50	75	50	75
% Gravel		10	20	15	5	30	15
% Sand		10		1			
% Silt		20	35		5	5	
% Clay				2	2	3	3
% Other	99						
other note	not specified						
Organic Stream Bottom							
%_Muck-mud		20		1	2		1
% Pulpy peat							
% Fibrous peat							
% Detritus			5				
% Logs limbs		20	5	1	1	2	1
% Marl							
% Other	1						
Other description	not specified						
Non Wadable							

NOTE: An explanation of the stream habitat assessment can be found in the "Water Quality Monitoring Field Manual For The Pennsylvania Senior Environment Corps", page 72

Table 10c
Summary of Data From The Pennsylvania Environment Corps (PaSEC)
Stream Description And Water Quality Data For Leonard Run
Site ID 746
(Continued)

Site ID	746	746	746	746	746	746	746
Monitor Date	9/23/2004	6/7/2005	9/13/2005	4/6/2006	8/17/2006	6/28/2007	9/20/2007
Land Use							
% Wetlands		20					
% Forest			90	50	100	50	100
% Cropland							
% Pasture							
% Residential							
% Commercial							
% Industrial							
% Unused abandoned							
% Overgrown shrub and small trees		80	10	50		50	
% Other	100						
Other Land Use Note	not specified						
Precipitation current	clear	clear	clear	clear	clear	storm	clear
Precipitation recent	clear	storm	clear	showers	clear	overcast	clear
Water Odors	none	none	none	spicy	none	other	none
Water Odors Note							
Stream Width	2.3	0.35		1.4	1	1.2	1.1
Non-Wadable			non-wadable				
Stream Width Note							
Stream Depth	0.146	0.1		0.1	0.07	0.06	0.05
Non-Wadable			non-wadable				
Stream depth note							
Surface Velocity	0.73	0.35		0.87	0.76	0.88	0.84
Surface Velocity Note							
Stream Flow Volume or Discharge	0.197	0.027		0.097	0.043	0.05	0.036
USGS Gaging							
Air Temperature C	11	25	22	5	18	19	16
Air Temperature F							
Water Temperature C	13	18	17	6	14	16	12
Water Temperature F							
pH, S. U.	6.7	7.1	7.2	5.9	6	6.3	5.9
Dissolved Oxygen, mg/L	9	7	10	10	8	9	10
Specific Conductance	300	450	575	350	400	400	495
Nitrate, mg/L	0.8	0	0	0.44	0.44	0.44	0.44
Total Phosphate, mg/L	0	0.1	0	0.1	0.7	0.6	0.5
Sulfate, mg/L	200	200	200	200	>200	>200	>200
Total Alkalinity, mg/L as CaCO3	15	5	105	15	15	60	10

NOTE: An explanation of the stream habitat assessment can be found in the "Water Quality Monitoring Field Manual For The Pennsylvania Senior Environment Corps", page 72

Table 11a
Summary Of Data From The Pennsylvania Environment Corps (PaSEC)
Stream Description And Water Quality Data For Little Yellow Creek
Site ID 751

Water Body Name	Little Yellow Creek	Little Yellow Creek	Little Yellow Creek	Little Yellow Creek	Little Yellow Creek	Little Yellow Creek	Little Yellow Creek
Site ID	751	751	751	751	751	751	751
Monitor Date	4/13/2000	5/4/2000	7/8/2000	8/11/2000	10/13/2000	2/9/2001	3/30/2001
River Mile Index	5.8	5.8	5.8	5.8	5.8	5.8	5.8
Type of Water Body	stream	stream	stream	stream	stream	stream	stream
Length of Assessed Area	30	30	30	30	30	30	30
Features							
Water Appearance	clear	clear	clear	clear	clear	other	clear
Water Appearance Note						murky	
Soil Odors	non-wadable	non-wadable	non-wadable	non-wadable	non-wadable	non-wadable	non-wadable
Soil Odors Note							
Sediment Deposits	none	none	none	none	none	none	none
Sediment Deposits Note							
Stream Type	meandering	meandering	meandering	meandering	meandering	meandering	meandering
Dams							no
High Water Mark		0.25	2.5	0.25	0.25	0.5	0.25
Highwater Estimate							
Stream Bank Cross-Section Shape	undercut	undercut	undercut	undercut	undercut	undercut	undercut
Stream Bank Erosion	occasional	occasional	occasional	none	none	occasional	none
Inorganic Stream Bottom							
% Bedrock		30		10	10	10	10
% Boulder		20	30				
% Cobble		20	50	60	60	60	60
% Gravel							
% Sand							
% Silt							
% Clay		10		15	15	15	15
% Other							
other note							
Organic Stream Bottom							
%_Muck-mud							
% Pulpy peat							
% Fibrous peat							
% Detritus		10	10	10	10	10	10
% Logs limbs		10	10	5	5	5	5
% Marl							
% Other							
Other description							
Non Wadable	non-wadable						

NOTE: An explanation of the stream habitat assessment can be found in the "Water Quality Monitoring Field Manual For The Pennsylvania Senior Environment Corps", page 72

Table 11a
Summary of Data From The Pennsylvania Environment Corps (PaSEC)
Stream Description And Water Quality Data For Little Yellow Creek
Site ID 751
(Continued)

Site ID	751	751	751	751	751	751	751
Monitor Date	4/13/2000	5/4/2000	7/8/2000	8/11/2000	10/13/2000	2/9/2001	3/30/2001
Land Use							
% Wetlands							
% Forest		50	50	50	50	50	50
% Cropland							
% Pasture							
% Residential							
% Commercial							
% Industrial							
% Unused abandoned		40	40	40	40	40	40
% Overgrown shrub and small trees		10	10	10	10	10	10
% Other	100						
Other Land Use Note	no % listed						
Precipitation current	clear	clear	clear	overcast	clear	overcast	overcast
Precipitation recent	overcast	clear	clear	overcast	clear	overcast	overcast
Water Odors		none	none	none	none	none	none
Water Odors Note							
Stream Width		3.03	0.98	1.27		3.66	3.31
Non-Wadable	non-wadable				non-wadable		
Stream Width Note							
Stream Depth		0.95	0.06	0.14		0.238	0.162
Non-Wadable	non-wadable				non-wadable		
Stream depth note							
Surface Velocity		0.31	0.29	0.21		0.54	0.45
Surface Velocity Note							
Stream Flow Volume or Discharge		0.12	0.0135	0.037		0.36	0.193
USGS Gaging							
Air Temperature C	6	25	21	23	15	14	5
Air Temperature F							
Water Temperature C	4	15	15	18	8	5	4
Water Temperature F							
pH, S. U.	7	7.8	7.9	7.9	7.9	6.6	7.3
Dissolved Oxygen, mg/L	10	8	9	8	9	9	10
Specific Conductance	109	120	288	247	148	126	134
Nitrate, mg/L	0.96	0.44	0.88	0.66	0.88	2.6	0.88
Total Phosphate, mg/L	0	0	0	0	0	0	0
Sulfate, mg/L	50	57	125	125	70	50	55
Total Alkalinity, mg/L as CaCO3	20	30	50	45	60	20	25

NOTE: An explanation of the stream habitat assessment can be found in the "Water Quality Monitoring Field Manual For The Pennsylvania Senior Environment Corps", page 72

Table 11b
Summary of Data From The Pennsylvania Environment Corps (PaSEC)
Stream Description And Water Quality Data For Little Yellow Creek
Site ID 751
(Continued)

Water Body Name	Little Yellow Creek	Little Yellow Creek	Little Yellow Creek	Little Yellow Creek	Little Yellow Creek	Little Yellow Creek	Little Yellow Creek
Site ID	751	751	751	751	751	751	751
Monitor Date	4/28/2001	6/15/2001	7/23/2001	9/29/2001	10/29/2001	11/18/2001	1/29/2002
River Mile Index	5.8	5.8	5.8	5.8	5.8	5.8	5.8
Type of Water Body	stream	stream	stream	stream	stream	stream	stream
Length of Assessed Area	30	30	30	30	30	30	30
Features							
Water Appearance	clear	clear	clear	clear	clear	clear	clear
Water Appearance Note							
Soil Odors	non-wadable	non-wadable	non-wadable	non-wadable	non-wadable	non-wadable	non-wadable
Soil Odors Note							
Sediment Deposits	none	none	none	none	none	none	none
Sediment Deposits Note							
Stream Type	meandering	meandering	meandering	meandering	meandering	meandering	meandering
Dams	no	no					
High Water Mark	0.25	0.25			0.25	0.25	
Highwater Estimate							
Stream Bank Cross-Section Shape	undercut	rectangular	rectangular	undercut	rectangular	undercut	undercut
Stream Bank Erosion	occasional	none	none	none	none	none	none
Inorganic Stream Bottom							
% Bedrock	30	30	30	30	30	30	30
% Boulder							
% Cobble	40	40	40	40	40	40	40
% Gravel							
% Sand							
% Silt							
% Clay	15	15	15	15	15	15	15
% Other							
other note							
Organic Stream Bottom							
% Muck-mud							
% Pulpy peat							
% Fibrous peat							
% Detritus	10	10	10	10	10	10	10
% Logs limbs	5	5	5	5	5	5	5
% Marl							
% Other							
Other description							
Non Wadable							

NOTE: An explanation of the stream habitat assessment can be found in the "Water Quality Monitoring Field Manual For The Pennsylvania Senior Environment Corps", page 72

Table 11b
Summary of Data From The Pennsylvania Environment Corps (PaSEC)
Stream Description And Water Quality Data For Little Yellow Creek
Site ID 751
(Continued)

Site ID	751	751	751	751	751	751	751
Monitor Date	4/28/2001	6/15/2001	7/23/2001	9/29/2001	10/29/2001	11/18/2001	1/29/2002
Land Use							
% Wetlands							
% Forest	60	60	60	60	60	60	60
% Cropland							
% Pasture							
% Residential							
% Commercial							
% Industrial							
% Unused abandoned	10	10	10	10	10	10	10
% Overgrown shrub and small trees	30	30	30	30	30	30	30
% Other							
Other Land Use Note							
Precipitation current	clear	clear	clear	clear	clear	clear	overcast
Precipitation recent	clear	clear	clear	overcast	clear	clear	clear
Water Odors	none	none	none	none	none	none	none
Water Odors Note							
Stream Width	3.43	1.74	1.47	1.66	1.48		3.32
Non-Wadable						non-wadable	
Stream Width Note							
Stream Depth	0.15	0.08	0.06	0.06	0.04		0.13
Non-Wadable						non-wadable	
Stream depth note							
Surface Velocity	0.4	0.28	0.24	0.13	0.15		0.54
Surface Velocity Note							
Stream Flow Volume or Discharge	0.16	0.024	0.017	0.009	0.0076		0.19
USGS Gaging							
Air Temperature C	10	28	24	13	10	15	11
Air Temperature F							
Water Temperature C	8	20	18	11	5	8	7
Water Temperature F							
pH, S. U.	7.3	8	7.3	7.4	6.7	6.9	6.8
Dissolved Oxygen, mg/L	9	7	7	8	7	7	11
Specific Conductance	157	266	458	377	379	333	127
Nitrate, mg/L	0.02	0.61	0.79	0.31	0	0.6	1.6
Total Phosphate, mg/L	0	0	0	0.54	0.1	0	0.1
Sulfate, mg/L	50	125	0	175	105	160	52
Total Alkalinity, mg/L as CaCO3	25	40	60	35	25	30	15
Notes On This Monitoring Site	7/23/01 - sulfates exceed upper limits	7/23/01 - sulfates exceed upper limits	7/23/01 - sulfates exceed upper limits	7/23/01 - sulfates exceed upper limits	7/23/01 - sulfates exceed upper limits	7/23/01 - sulfates exceed upper limits	7/23/01 - sulfates exceed upper limits

NOTE: An explanation of the stream habitat assessment can be found in the "Water Quality Monitoring Field Manual For The Pennsylvania Senior Environment Corps", page 72

Table 11c
Summary of Data From The Pennsylvania Environment Corps (PaSEC)
Stream Description And Water Quality Data For Little Yellow Creek
Site ID 751
(Continued)

Water Body Name	Little Yellow Creek	Little Yellow Creek	Little Yellow Creek	Little Yellow Creek
Site ID	751	751	751	751
Monitor Date	2/25/2002	4/26/2002	5/15/2002	6/9/2002
River Mile Index	5.8	5.8	5.8	5.8
Type of Water Body	stream	stream	stream	stream
Length of Assessed Area	30	30	30	30
Features				
Water Appearance	clear	clear	clear	clear
Water Appearance Note				
Soil Odors	non-wadable	non-wadable	non-wadable	non-wadable
Soil Odors Note				
Sediment Deposits	none	none	none	none
Sediment Deposits Note				
Stream Type	meandering	meandering	meandering pool / riffle	meandering
Dams				
High Water Mark				
Highwater Estimate				
Stream Bank Cross-Section Shape	undercut	undercut	undercut	undercut
Stream Bank Erosion	none	none	none	none
Inorganic Stream Bottom				
% Bedrock	30	30	30	30
% Boulder				
% Cobble	40	40	40	40
% Gravel				
% Sand				
% Silt				
% Clay	15	15	15	15
% Other				
other note				
Organic Stream Bottom				
% Muck-mud				
% Pulpy peat				
% Fibrous peat				
% Detritus	10	10	10	10
% Logs limbs	5	5	5	5
% Marl				
% Other				
Other description				
Non Wadable				

Table 11c
Summary of Data From The Pennsylvania Environment Corps (PaSEC)
Stream Description And Water Quality Data For Little Yellow Creek
Site ID 751
(Continued)

Site ID	751	751	751	751
Monitor Date	2/25/2002	4/26/2002	5/15/2002	6/9/2002
Land Use				
% Wetlands				
% Forest	60	60	60	60
% Cropland				
% Pasture				
% Residential				
% Commercial				
% Industrial				
% Unused abandoned	10	10	10	40
% Overgrown shrub and small trees	30	30	30	
% Other				
Other Land Use Note				
Precipitation current	clear	clear	clear	clear
Precipitation recent	clear	clear	rain	clear
Water Odors	none	none	none	none
Water Odors Note				
Stream Width	3.28	1.62	5.21	
Non-Wadable				non-wadable
Stream Width Note				
Stream Depth	0.12	0.121	0.22	
Non-Wadable				non-wadable
Stream depth note				
Surface Velocity	0.45	0.53	0.6	
Surface Velocity Note				
Stream Flow Volume or Discharge	0.014	0.079	0.56	
USGS Gaging				
Air Temperature C	16	12	14	27
Air Temperature F				
Water Temperature C	4	8	11	17
Water Temperature F				
pH, S. U.	7.2	6.6	7.3	6.7
Dissolved Oxygen, mg/L	9	9	10	10
Specific Conductance	198	117	86	135
Nitrate, mg/L	1.2	0.52	0.88	1.1
Total Phosphate, mg/L	0.46	2	1.84	0.28
Sulfate, mg/L	50	52	50	62
Total Alkalinity, mg/L as CaCO3	20	30	15	20
Notes On This Monitoring Site	7/23/01 - sulfates exceed upper limits	7/23/01 - sulfates exceed upper limits	7/23/01 - sulfates exceed upper limits	7/23/01 - sulfates exceed upper limits

Table 12
Summary Of Data From The Pennsylvania Environment Corps (PaSEC)
Stream Description And Water Quality Data For Little Yellow Creek
Site ID 752

Water Body Name	Little Yellow Creek	Little Yellow Creek	Little Yellow Creek	Little Yellow Creek	Little Yellow Creek	Little Yellow Creek
Site ID	752	752	752	752	752	752
Monitor Date	4/13/2000	5/14/2000	7/8/2000	8/11/2000	10/13/2000	2/9/2001
River Mile Index	6.6	6.6	6.6	6.6	6.6	6.6
Type of Water Body	stream	stream	stream	stream	stream	stream
Length of Assessed Area	30	30	30	30	30	30
Features						
Water Appearance		clear	orange/red	clear	clear	muddy/cloudy
Water Appearance Note						
Soil Odors	non-wadable	non-wadable	sulfur	non-wadable	non-wadable	non-wadable
Soil Odors Note						
Sediment Deposits	other	other	other	other	other	other
Sediment Deposits Note	light amt. of red deposit	very light orange/red iron deposits	iron deposits (red-orange)	red (iron)	light iron deposits (red)	light iron deposits on rocks
Stream Type	meandering	meandering	meandering	meandering	meandering	meandering
Dams	no		no			
High Water Mark	0.5	0.5	0.5	0.5	0.5	0.5
Highwater Estimate						
Stream Bank Cross-Section Shape	undercut	undercut	undercut	undercut	undercut	undercut
Stream Bank Erosion	occasional	occasional	occasional	occasional	occasional	occasional
Inorganic Stream Bottom						
% Bedrock	30	30		10	10	10
% Boulder	20	20	30			
% Cobble	20	20	50	60	60	60
% Gravel						
% Sand						
% Silt						
% Clay	10	10		15	15	15
% Other						
other note						
Organic Stream Bottom						
% Muck-mud						
% Pulpy peat						
% Fibrous peat						
% Detritus	10	10	10	10	10	10
% Logs limbs	10	10	10	5	5	5
% Marl						
% Other						
Other description						
Non Wadable						

NOTE: An explanation of the stream habitat assessment can be found in the "Water Quality Monitoring Field Manual For The Pennsylvania Senior Environment Corps", page 72

Table 12
Summary of Data From The Pennsylvania Environment Corps (PaSEC)
Stream Description And Water Quality Data For Little Yellow Creek
Site ID 752
(Continued)

Site ID	752	752	752	752	752	752
Monitor Date	4/13/2000	5/14/2000	7/8/2000	8/11/2000	10/13/2000	2/9/2001
Land Use						
% Wetlands						
% Forest						
% Cropland						
% Pasture						
% Residential				30		
% Commercial	30	30				
% Industrial	30	30	30		30	30
% Unused abandoned		40	30	30	30	30
% Overgrown shrub and small trees	40		40	40	40	40
% Other						
Other Land Use Note						
Precipitation current	overcast	clear	clear	overcast	clear	overcast
Precipitation recent	overcast	clear	clear	overcast	clear	overcast
Water Odors	none	none	sulfur	none	none	none
Water Odors Note						
Stream Width		2.72	0.79	0.78		2.5
Non-Wadable	non-wadable				non-wadable	
Stream Width Note						
Stream Depth		0.11	0.08	0.06		0.25
Non-Wadable	non-wadable				non-wadable	
Stream depth note						
Surface Velocity		0.45	0.48	0.49		0.6
Surface Velocity Note						
Stream Flow Volume or Discharge		0.11	0.02	0.018		0.3
USGS Gaging						
Air Temperature C	66	25	18	26	15	16
Air Temperature F						
Water Temperature C	4	12	14	18	9	5
Water Temperature F						
pH, S. U.	6.9	7.1	7.6	7.5	8	6.5
Dissolved Oxygen, mg/L	8	9	8	8	10	8
Specific Conductance	121	179	323	299	161	140
Nitrate, mg/L	0.88	0.52	0.44	0.44	0.52	2.3
Total Phosphate, mg/L	0	0	0	0	0	0
Sulfate, mg/L	50	60	175	190	71	50
Total Alkalinity, mg/L as CaCO3	20	30	60	50	80	20

NOTE: An explanation of the stream habitat assessment can be found in the "Water Quality Monitoring Field Manual For The Pennsylvania Senior Environment Corps", page 72

Table 13a
Summary Of Data From The Pennsylvania Environment Corps (PaSEC)
Stream Description And Water Quality Data For Little Yellow Creek
Site ID 753

Water Body Name	Little Yellow Creek	Little Yellow Creek	Little Yellow Creek	Little Yellow Creek	Little Yellow Creek	Little Yellow Creek	Little Yellow Creek
Site ID	753	753	753	753	753	753	753
Monitor Date	4/13/2000	5/4/2000	7/8/2000	8/11/2000	10/13/2000	2/9/2001	3/30/2001
River Mile Index	7.7	7.7	7.7	7.7	7.7	7.7	7.7
Type of Water Body	stream	stream	stream	stream	stream	stream	stream
Length of Assessed Area	30	30	30	30	30	30	30
Features							
Water Appearance	clear	clear	clear	clear	clear	other	clear
Water Appearance Note						murky	
Soil Odors	non-wadable	non-wadable	non-wadable	non-wadable	non-wadable	non-wadable	non-wadable
Soil Odors Note							
Sediment Deposits	none	none	none	none	none	none	none
Sediment Deposits Note							
Stream Type	meandering	meandering	meandering	meandering	meandering	meandering	meandering
Dams	no		no	no			no
High Water Mark	0.25	0.25	0.25	0.25	0.25	0.25	0.25
Highwater Estimate							
Stream Bank Cross-Section Shape	undercut	undercut	undercut	undercut	undercut	undercut	undercut
Stream Bank Erosion	occasional	occasional	none	occasional	occasional	occasional	occasional
Inorganic Stream Bottom							
% Bedrock	30	30		10	10	10	10
% Boulder	20	20	30				
% Cobble	20	20	50	60	60	60	60
% Gravel							
% Sand							
% Silt							
% Clay	10	10		15	15	15	15
% Other							
other note							
Organic Stream Bottom							
% Muck-mud							
% Pulpy peat							
% Fibrous peat							
% Detritus	10	10	10	10	10	10	10
% Logs limbs	10	10	10	5	5	5	5
% Marl							
% Other							
Other description							
Non Wadable							

NOTE: An explanation of the stream habitat assessment can be found in the "Water Quality Monitoring Field Manual For The Pennsylvania Senior Environment Corps", page 72

Table 13a
Summary of Data From The Pennsylvania Environment Corps (PaSEC)
Stream Description And Water Quality Data
Site ID 753
(Continued)

Site ID	753	753	753	753	753	753	753
Monitor Date	4/13/2000	5/4/2000	7/8/2000	8/11/2000	10/13/2000	2/9/2001	3/30/2001
Land Use							
% Wetlands	30	30	30	30	30	30	30
% Forest	30	30	30	30	30	30	30
% Cropland							
% Pasture							
% Residential	10	10	10	10	10	10	10
% Commercial							
% Industrial							
% Unused abandoned							
% Overgrown shrub and small trees	30	30	30	30	30	30	30
% Other							
Other Land Use Note							
Precipitation current	clear	clear	clear	overcast	clear	overcast	overcast
Precipitation recent	overcast	clear	clear	overcast	clear	overcast	overcast
Water Odors	none	none	none	none	none	none	none
Water Odors Note							
Stream Width		12.34	1.3	0.83		2.76	2.76
Non-Wadable	non-wadable				non-wadable		
Stream Width Note							
Stream Depth		0.87	0.08	0.06		0.2	0.14
Non-Wadable	non-wadable				non-wadable		
Stream depth note							
Surface Velocity		0.29	0.28	0.28		0.6	0.49
Surface Velocity Note							
Stream Flow Volume or Discharge		0.08	0.023	0.011		0.27	0.157
USGS Gaging							
Air Temperature C	6	24	19	22	15	12	6
Air Temperature F							
Water Temperature C	4	15	14	16	8	5	4
Water Temperature F							
pH, S. U.	7.2	7.3	7.7	7.6	7.8	7.2	7.6
Dissolved Oxygen, mg/L	9	8	9	7	9	10	10
Specific Conductance	122	145	354	339	156	173	148
Nitrate, mg/L	0.62	0.52	0.44	0.44	0.52	2.6	1.7
Total Phosphate, mg/L	0	0	0	0	0	0	0
Sulfate, mg/L	50	50	80	105	55	50	50
Total Alkalinity, mg/L as CaCO3	25	40	120	140	60	25	25

NOTE: An explanation of the stream habitat assessment can be found in the "Water Quality Monitoring Field Manual For The Pennsylvania Senior Environment Corps", page 72

Table 13b
Summary of Data From The Pennsylvania Environment Corps (PaSEC)
Stream Description And Water Quality Data For Little Yellow Creek
Site ID 753
(Continued)

Water Body Name	Little Yellow Creek	Little Yellow Creek	Little Yellow Creek	Little Yellow Creek	Little Yellow Creek	Little Yellow Creek	Little Yellow Creek
Site ID	753	753	753	753	753	753	753
Monitor Date	4/28/2001	6/15/2001	7/23/2001	9/29/2001	10/29/2001	11/18/2001	1/29/2002
River Mile Index	7.7	7.7	7.7	7.7	7.7	7.7	7.7
Type of Water Body	stream	stream	stream	stream	stream	stream	stream
Length of Assessed Area	30	30	30	30	30	30	30
Features							
Water Appearance	clear	clear	clear	clear	clear	clear	clear
Water Appearance Note							
Soil Odors	non-wadable	non-wadable	non-wadable	non-wadable	non-wadable	non-wadable	non-wadable
Soil Odors Note							
Sediment Deposits	none	none	none	none	none	none	none
Sediment Deposits Note							
Stream Type	meandering	meandering	meandering	meandering	meandering	meandering	meandering
Dams	no	no					
High Water Mark	0.25	0.25			0.25	2.5	
Highwater Estimate							
Stream Bank Cross-Section Shape	undercut	undercut	rectangular	undercut	undercut	undercut	undercut
Stream Bank Erosion	occasional	none	none	none	none	none	none
Inorganic Stream Bottom							
% Bedrock	30	30	30	30	30	30	30
% Boulder							
% Cobble	40	40	40	40	40	40	40
% Gravel							
% Sand							
% Silt							
% Clay	15	15	15	15	15	15	15
% Other							
other note							
Organic Stream Bottom							
% Muck-mud							
% Pulpy peat							
% Fibrous peat							
% Detritus	10	10	10	10	10	10	10
% Logs limbs	5	5	5	5	5	5	5
% Marl							
% Other							
Other description							
Non Wadable							

NOTE: An explanation of the stream habitat assessment can be found in the "Water Quality Monitoring Field Manual For The Pennsylvania Senior Environment Corps", page 72

Table 13b
Summary of Data From The Pennsylvania Environment Corps (PaSEC)
Stream Description And Water Quality Data For Little Yellow Creek
Site ID 753
(Continued)

Site ID	753	753	753	753	753	753	753
Monitor Date	4/28/2001	6/15/2001	7/23/2001	9/29/2001	10/29/2001	11/18/2001	1/29/2002
Land Use							
% Wetlands	30	30	30	30	30	30	30
% Forest	30	30	30	30	30	30	30
% Cropland							
% Pasture							
% Residential	10	10	10	10	10	10	10
% Commercial							
% Industrial							
% Unused abandoned							
% Overgrown shrub and small trees	30	30	30	30	30	30	30
% Other							
Other Land Use Note							
Precipitation current	clear	clear	clear	clear	clear	clear	overcast
Precipitation recent	clear	clear	clear	showers	clear	clear	clear
Water Odors	none	none	none	none	none	none	none
Water Odors Note							
Stream Width		0.74	0.67	0.69	0.57		2.6
Non-Wadable	non-wadable					non-wadable	
Stream Width Note							
Stream Depth		0.08	0.07	0.04	0.26		0.13
Non-Wadable	non-wadable					non-wadable	
Stream depth note							
Surface Velocity		0.29	0.01	0.07	0.07		0.43
Surface Velocity Note							
Stream Flow Volume or Discharge		0.008	0.006	0.002	0.0014		0.1135
USGS Gaging							
Air Temperature C	10	25	23	15	9	16	14
Air Temperature F							
Water Temperature C	7	17	17	11	5	10	8
Water Temperature F							
pH, S. U.	6.8	7.9	7.1	7.3	7	6.7	7.1
Dissolved Oxygen, mg/L	8	8	7	7	7	3	10
Specific Conductance	193	320	491	420	232	436	137
Nitrate, mg/L	0	0.35	0.3	0.4	0	0.31	2.1
Total Phosphate, mg/L	0	0	0	0.98	0.1	0	0.92
Sulfate, mg/L	50	85	100	100	60	65	50
Total Alkalinity, mg/L as CaCO3	45	100	180	95	35	75	20

NOTE: An explanation of the stream habitat assessment can be found in the "Water Quality Monitoring Field Manual For The Pennsylvania Senior Environment Corps", page 72

Table 13c
Summary of Data From The Pennsylvania Environment Corps (PaSEC)
Stream Description And Water Quality Data For Little Yelloe Creek
Site ID 753
(Continued)

Water Body Name	Little Yellow Creek	Little Yellow Creek	Little Yellow Creek	Little Yellow Creek
Site ID	753	753	753	753
Monitor Date	2/25/2002	4/26/2002	5/15/2002	6/9/2002
River Mile Index	7.7	7.7	7.7	7.7
Type of Water Body	stream	stream	stream	stream
Length of Assessed Area	30	30	30	30
Features				
Water Appearance	clear	clear	muddy/cloudy	clear
Water Appearance Note				
Soil Odors	non-wadable	non-wadable	non-wadable	non-wadable
Soil Odors Note				
Sediment Deposits	none	none	none	none
Sediment Deposits Note				
Stream Type	meandering	meandering	meandering pool / riffle	meandering
Dams				
High Water Mark				
Highwater Estimate				
Stream Bank Cross-Section Shape	undercut	undercut	undercut	undercut
Stream Bank Erosion	none	none	none	none
Inorganic Stream Bottom				
% Bedrock	30	30	30	30
% Boulder				
% Cobble	40	40	40	40
% Gravel				
% Sand				
% Silt				
% Clay	15	15	15	15
% Other				
other note				
Organic Stream Bottom				
% Muck-mud				
% Pulpy peat				
% Fibrous peat				
% Detritus	10	10	10	10
% Logs limbs	5	5	5	5
% Marl				
% Other				
Other description				
Non Wadable				

NOTE: An explanation of the stream habitat assessment can be found in the "Water Quality Monitoring Field Manual For The Pennsylvania Senior Environment Corps", page 72

Table 13c
Summary of Data From The Pennsylvania Environment Corps (PaSEC)
Stream Description And Water Quality Data For Little Yelloe Creek
Site ID 753
(Continued)

Site ID	753	753	753	753
Monitor Date	2/25/2002	4/26/2002	5/15/2002	6/9/2002
Land Use				
% Wetlands	30	30	30	30
% Forest	30	30	30	30
% Cropland				
% Pasture				
% Residential	10	10	10	10
% Commercial				
% Industrial				
% Unused abandoned				
% Overgrown shrub and small trees	30	30	30	30
% Other				
Other Land Use Note				
Precipitation current	clear	clear	clear	clear
Precipitation recent	clear	clear	showers	clear
Water Odors	none	none	none	none
Water Odors Note				
Stream Width	2.8	2.94	2.62	8.25
Non-Wadable				
Stream Width Note				
Stream Depth	0.11	0.12	0.25	0.15
Non-Wadable				
Stream depth note				
Surface Velocity	0.4	0.43	0.82	0.6
Surface Velocity Note				
Stream Flow Volume or Discharge	0.102	0.1254	0.434	0.1808
USGS Gaging				
Air Temperature C	15	12	14	27
Air Temperature F				
Water Temperature C	7	10	11	18
Water Temperature F				
pH, S. U.	7	6.5	7.2	6.8
Dissolved Oxygen, mg/L	10	10	11	10
Specific Conductance	139	152	104	163
Nitrate, mg/L	1.7	0.88	1.7	1.6
Total Phosphate, mg/L	0.84	0.06	1.44	0
Sulfate, mg/L	50	50	50	50
Total Alkalinity, mg/L as CaCO3	25	35	20	30

NOTE: An explanation of the stream habitat assessment can be found in the "Water Quality Monitoring Field Manual For The Pennsylvania Senior Environment Corps", page 72