



BioMost, Inc.
Mining & Reclamation Services
434 Spring Street Ext.
Mars, PA 16046
www.biomost.com

CLIENT:

STREAM RESTORATION INCORPORATED

www.streamrestorationinc.org

NO.	BY	DATE	DESCRIPTION
REVISIONS			

DATE: 12/15/2022
DRAWN BY: LVH
ACAD FILE NAME: 853 - Phase 3 As-Built.dwg

LATITUDE: 40.566511
LONGITUDE: -79.295047
CHECKED BY: ---

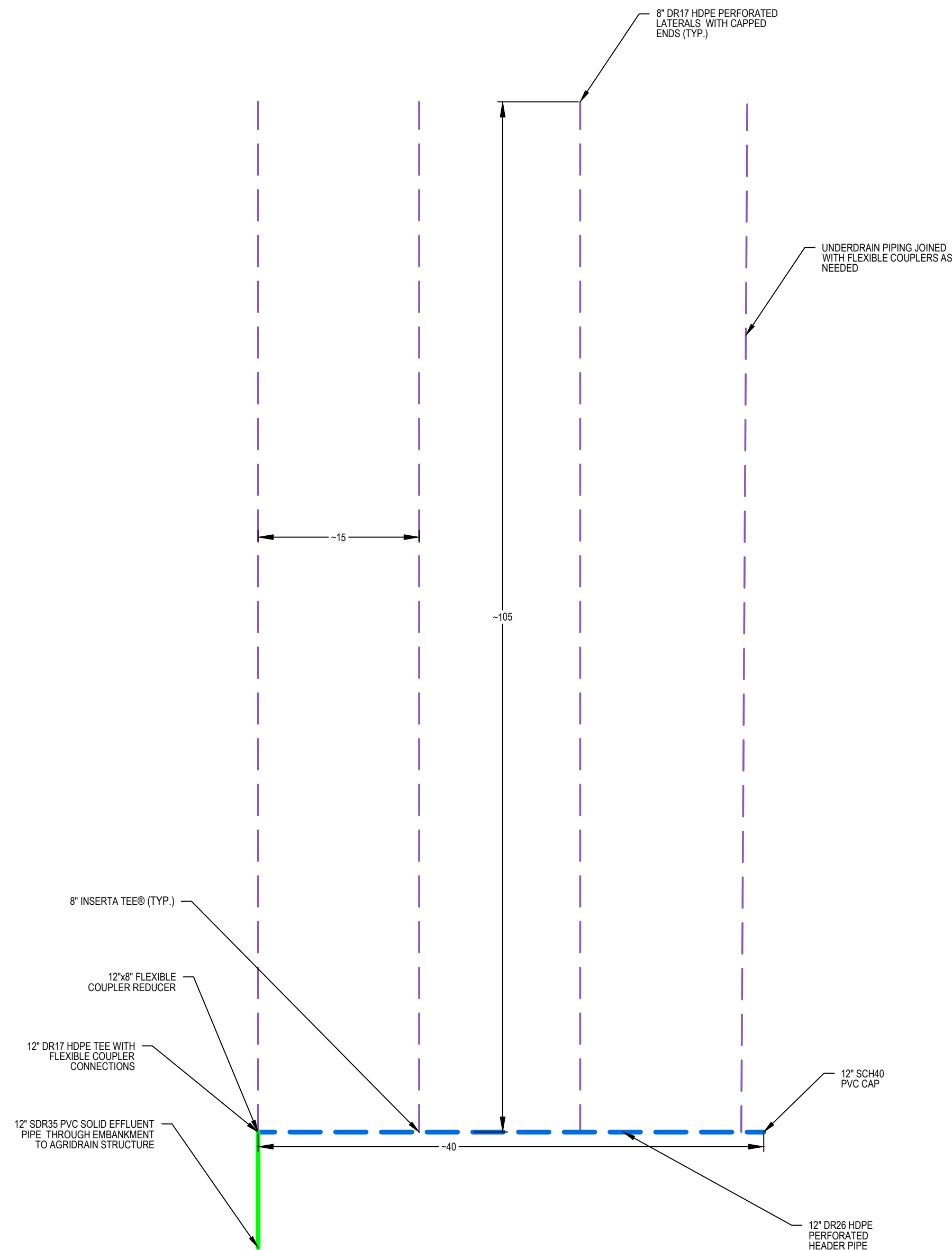
SCALE: 1" = 40'
UNLESS OTHERWISE NOTED

ALL EXISTING CONDITIONS SHALL BE CHECKED AND VERIFIED AT THE SITE PRIOR TO CONDUCTING MAINTENANCE

AS-BUILT DRAWING
NEAL RUN
RESTORATION PROJECT - PHASE III

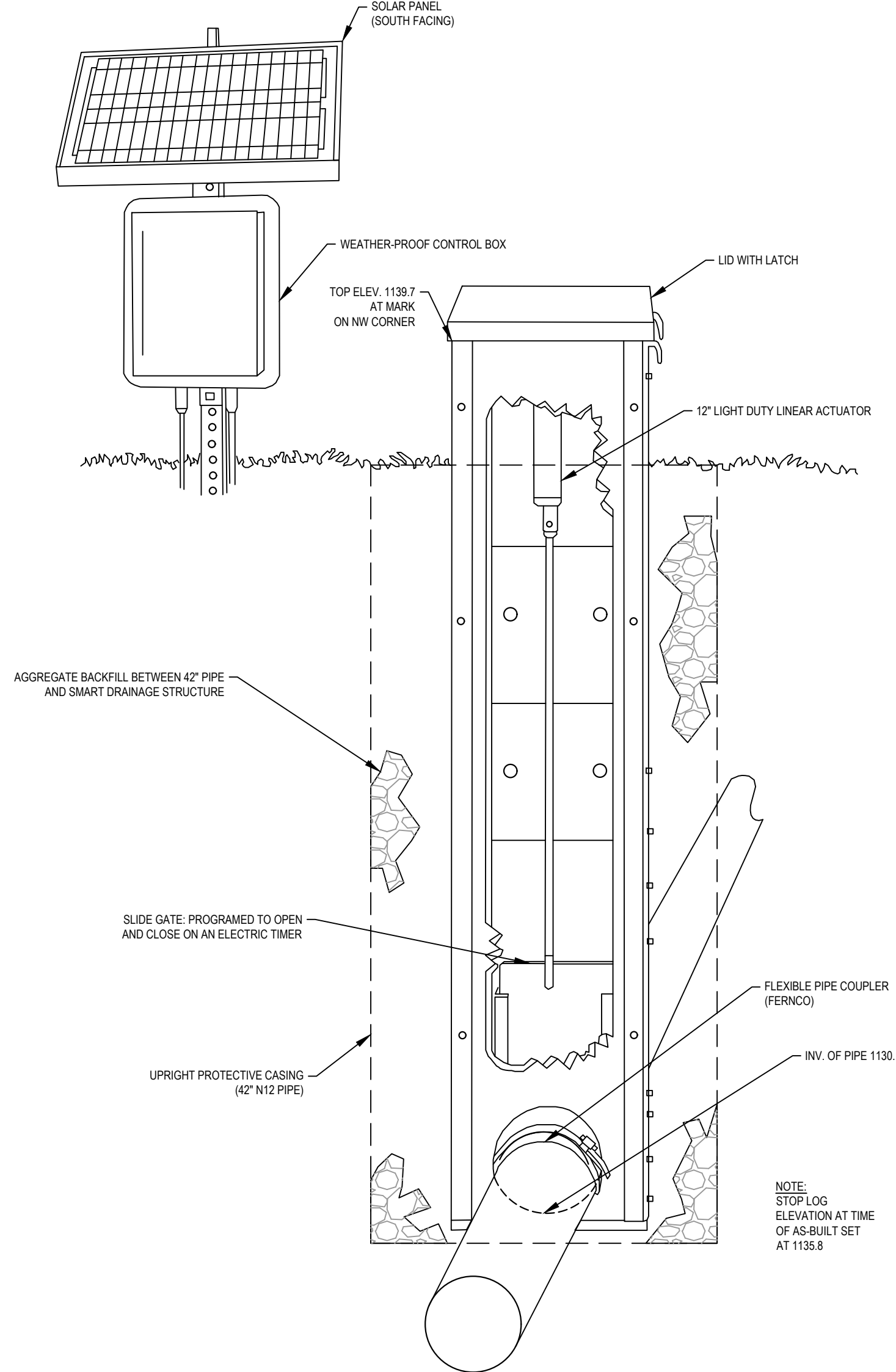
PLAN VIEW

1 of 2



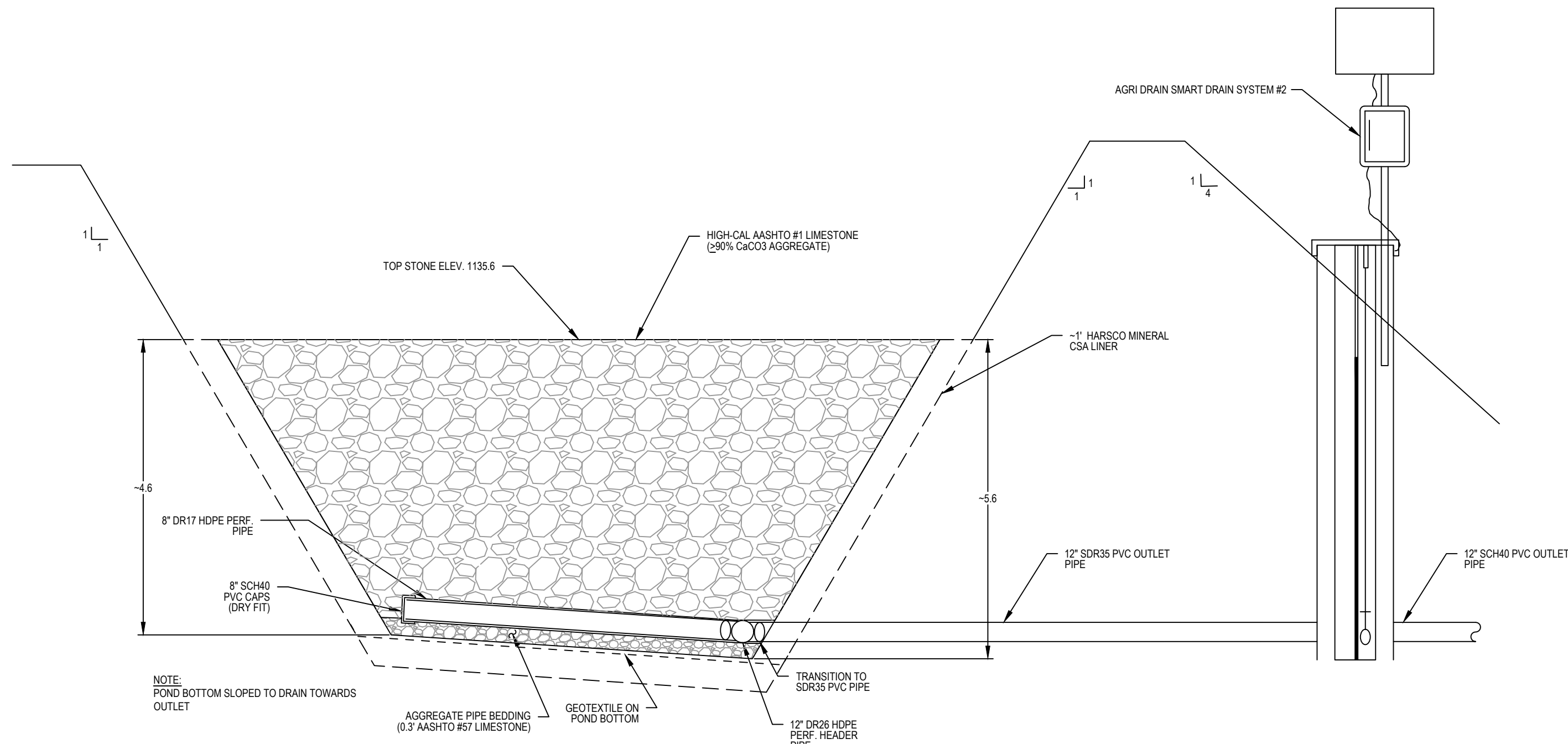
AFVFP2 UNDERDRAIN PIPE DETAIL

Horizontal Scale: None Vertical Scale: None



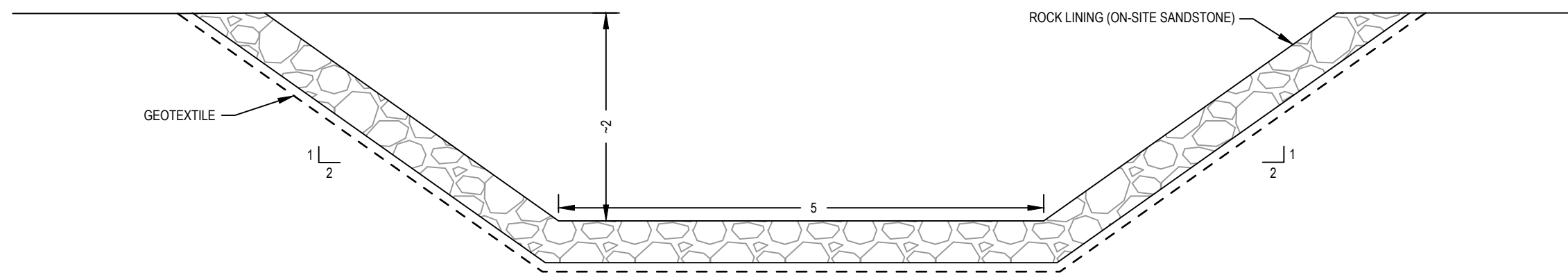
AGRI DRAIN SMART DRAINAGE SYSTEM #2

Horizontal Scale: None Vertical Scale: None



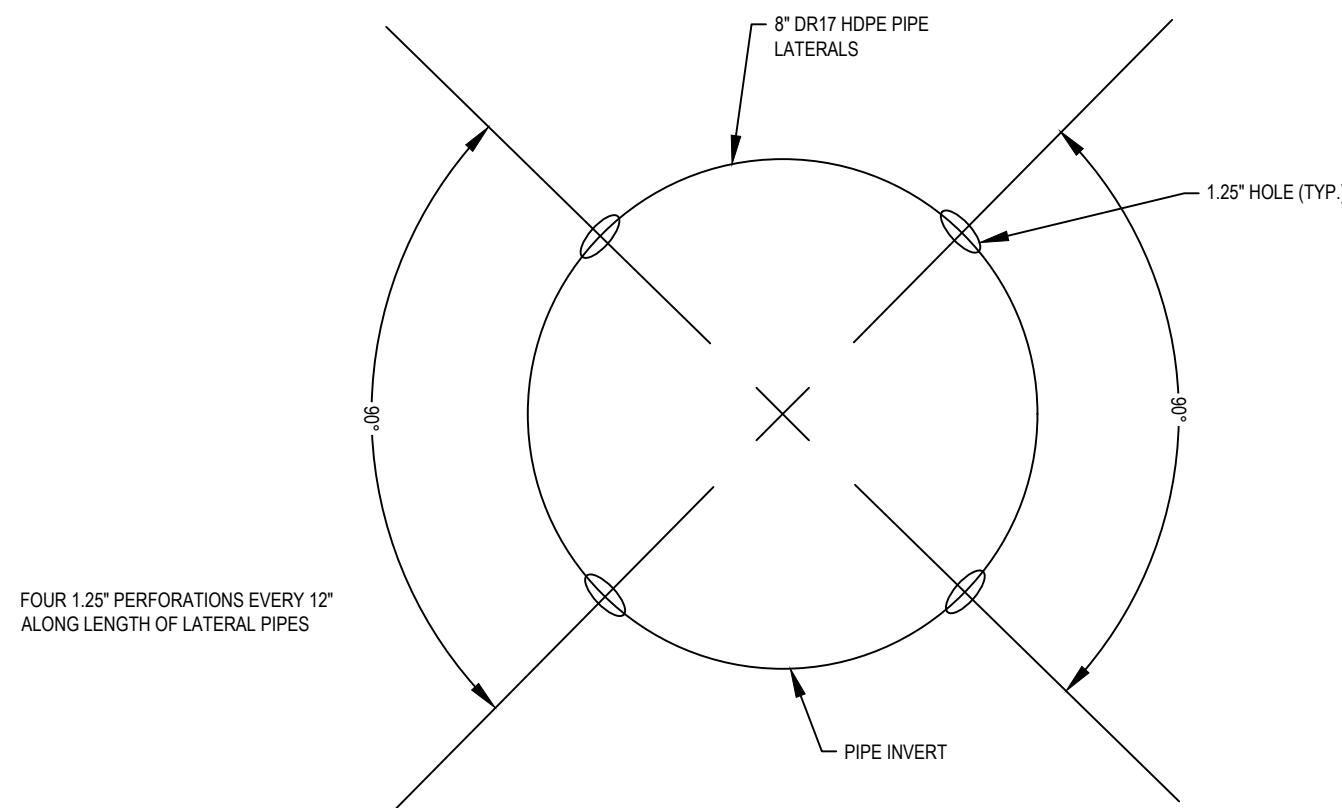
AUTO-FLUSHING VERTICAL FLOW POND #2 (AFVFP2)

Horizontal Scale: None Vertical Scale: None



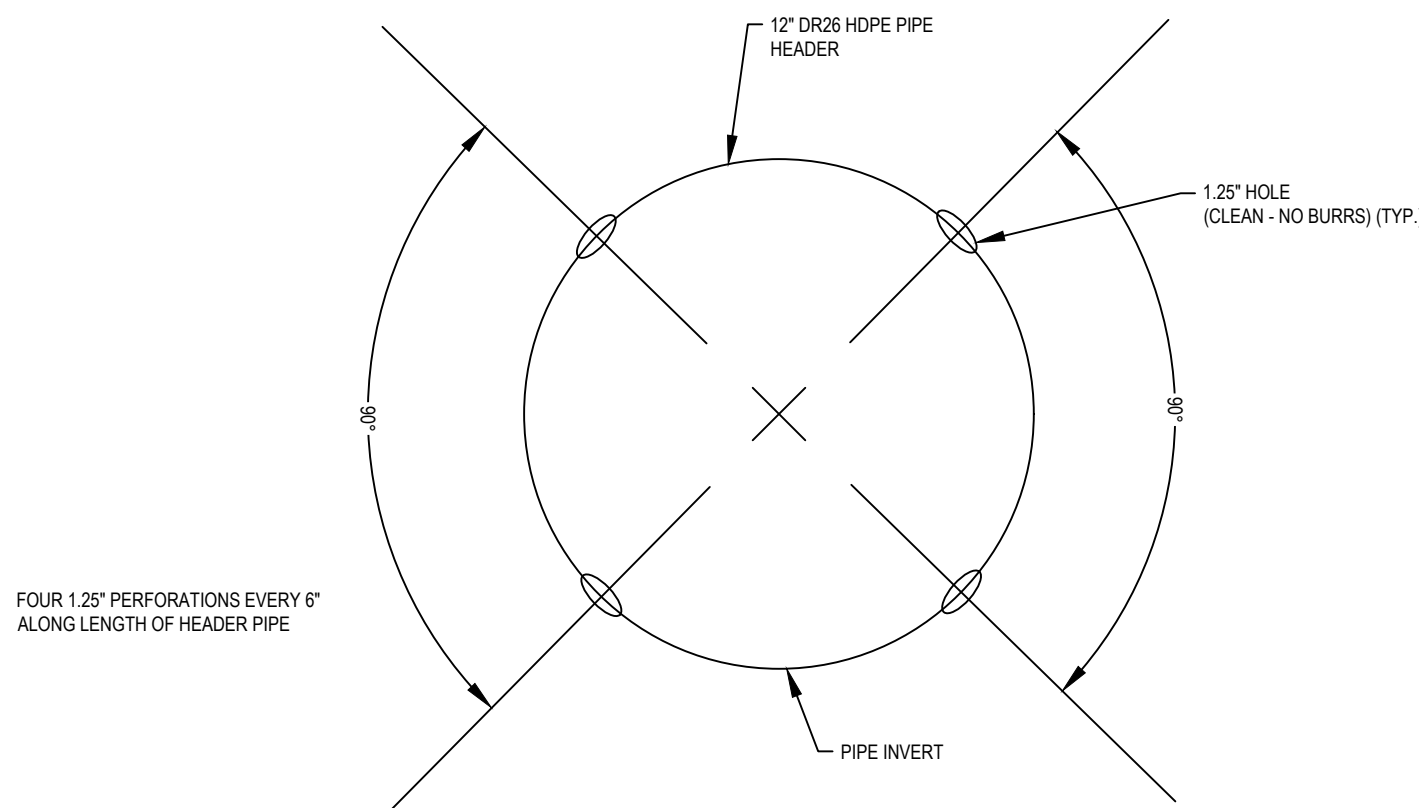
AFVFP2 EMERGENCY SPILLWAY

Horizontal Scale: None Vertical Scale: None



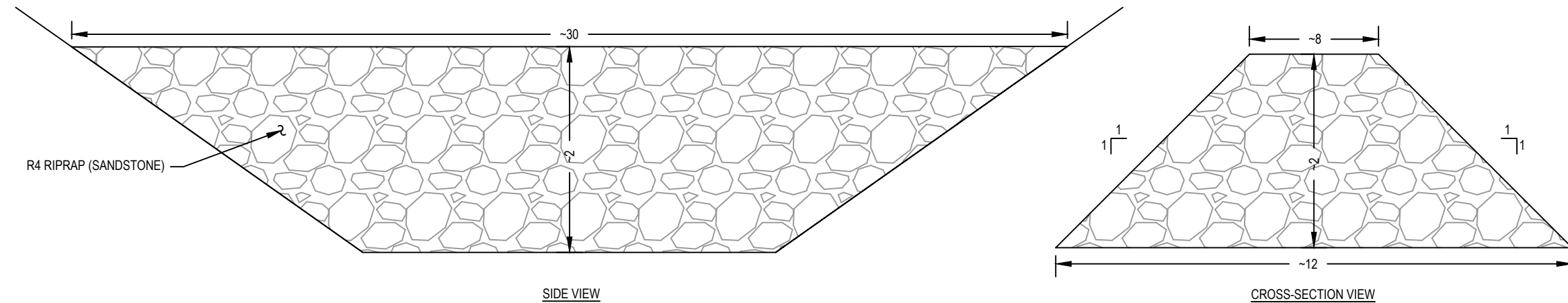
8" LATERAL PIPE PERFORATION DETAIL

Horizontal Scale: None Vertical Scale: None



12" HEADER PIPE PERFORATION DETAIL

Horizontal Scale: None Vertical Scale: None



CHECK DAM

Horizontal Scale: None Vertical Scale: None



BioMost, Inc.
Mining & Reclamation Services
434 Spring Street Ext.
Mars, PA 16046
www.biomost.com

CLIENT:

STREAM RESTORATION
INCORPORATED
www.streamrestorationinc.org

NO.	BY	DATE	DESCRIPTION
REVISIONS			

DATE 12/15/2022	LATITUDE: 40.566511 LONGITUDE: -79.295047	SCALE: 1" = 1' 1' 0.5' 0 1'
DRAWN BY: LVH	CHECKED BY: ---	UNLESS OTHERWISE NOTED
ACAD FILE NAME: 853 - Phase 3 As-Built.dwg		
ALL EXISTING CONDITIONS SHALL BE CHECKED AND VERIFIED AT THE SITE PRIOR TO CONDUCTING MAINTENANCE		

AS-BUILT DRAWING
NEAL RUN
RESTORATION PROJECT - PHASE III

DETAILS

DRAWING NUMBER:
2 of 2