

BIOREACTOR UNDERDRAIN

- NOTES:
- 1) AS-BUILT INFORMATION COMPILED FROM FIELD INSPECTIONS BY WHM CONSULTING, INC. ON 9/3/13 AND 11/11/13 USING A POST-PROCESSED SUB-FOOT RATED TRIMBLE GPS UNIT AND LASER LEVEL, AS WELL AS DESIGN INFORMATION PROVIDED BY BIOMOST, INC.
 - 2) PROPERTY BOUNDARY INFORMATION PROVIDED BY GEOTECH ENGINEERING, INC. ISSUED 5/17/13.
 - 3) BASE MAP REDUCED FROM PAMAP LIDAR 2006.

LEGEND	
	EXISTING CONTOURS (C.I.=2')
	EXISTING CONTOURS (C.I.=10')
	FINAL CONTOURS (C.I.=2')
	FINAL CONTOURS (C.I.=10')
	ACCESS ROAD
	EMERGENCY SPILLWAY
	EXISTING CHANNEL
	SEEPAGE AREA
	8" SDR35 PVC PIPE
	VALVE PIT
	PROPERTY BOUNDARY (NOTE 2)
	CROSS SECTIONS
	RELOCATED CHANNEL
	ANTI-SEEP COLLAR
	PROPOSED SLOPE MONITORING LOCATIONS

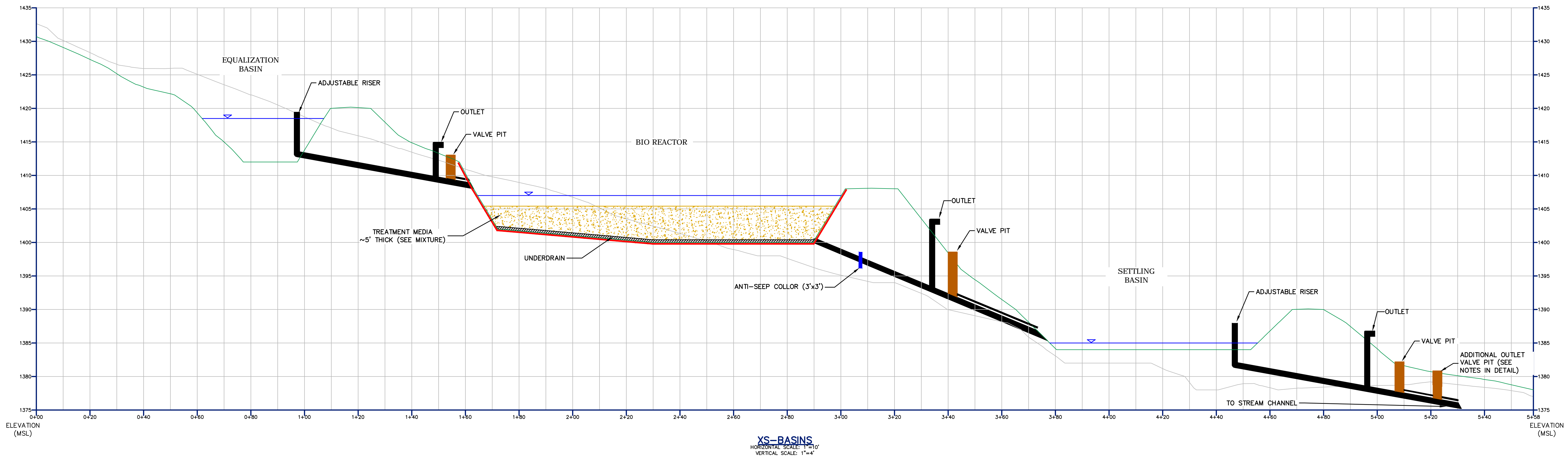
BAI GROUP INC.
Balanced Environmental Solutions

REVISIONS	
DATE	ADDITIONAL DETAILS PER DEP. COMMENTS
12/13	

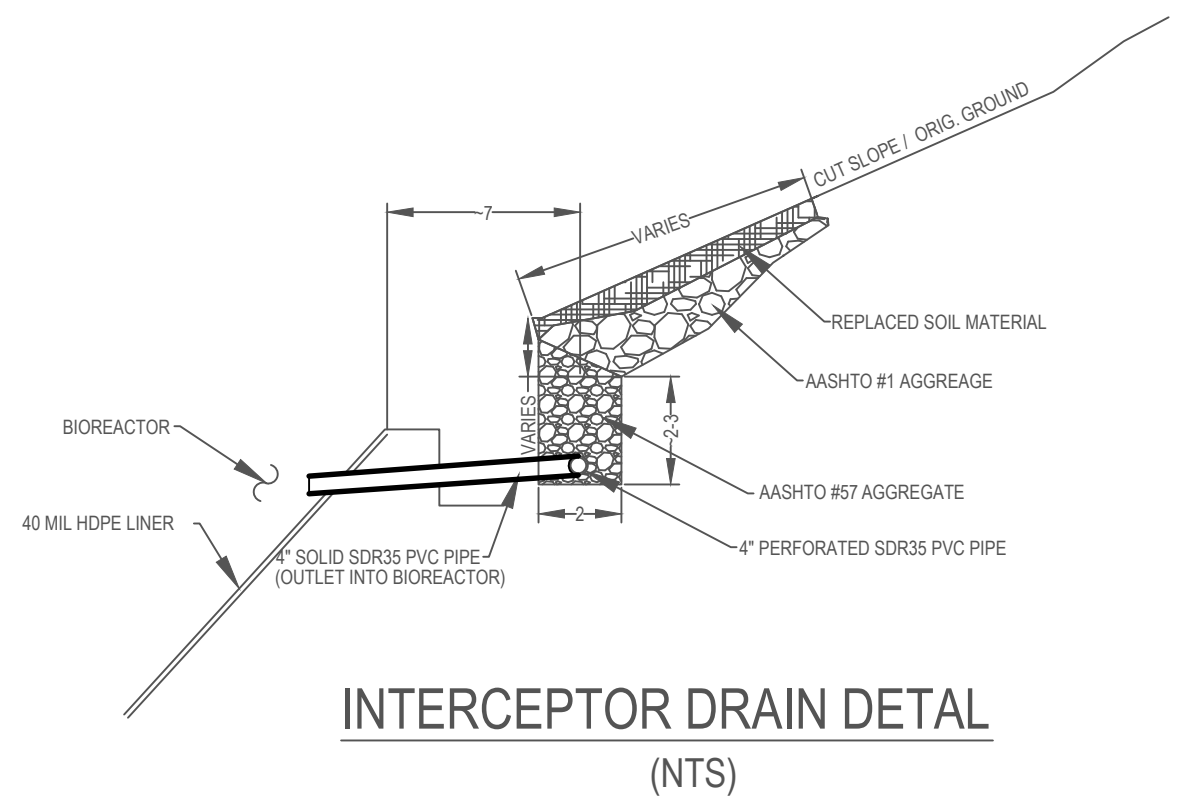
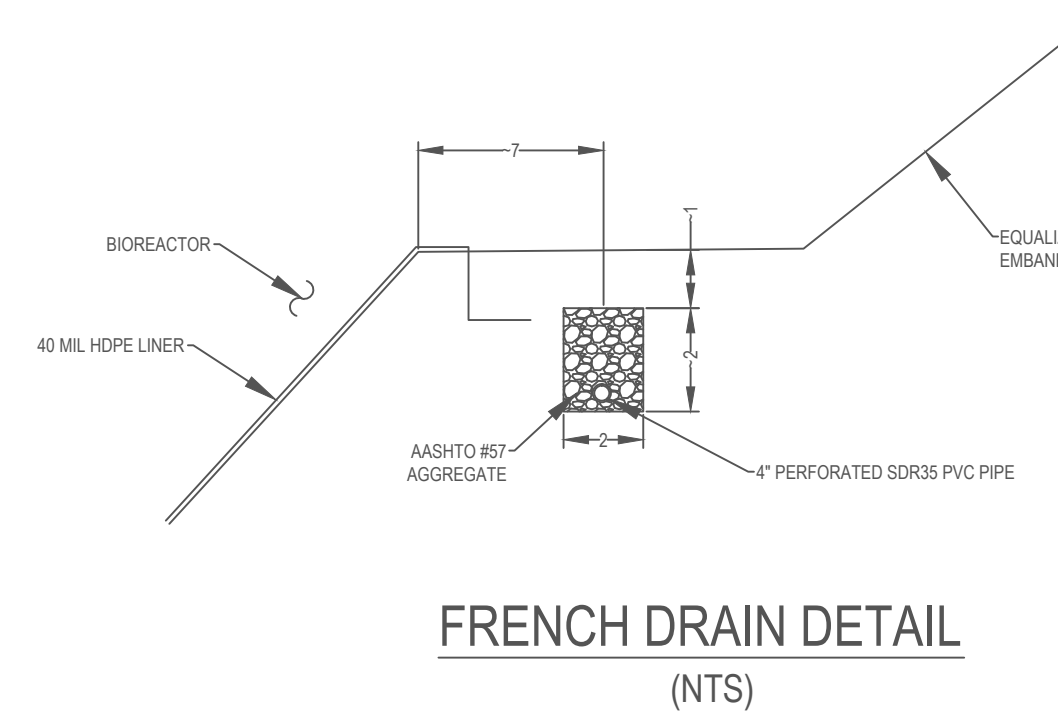
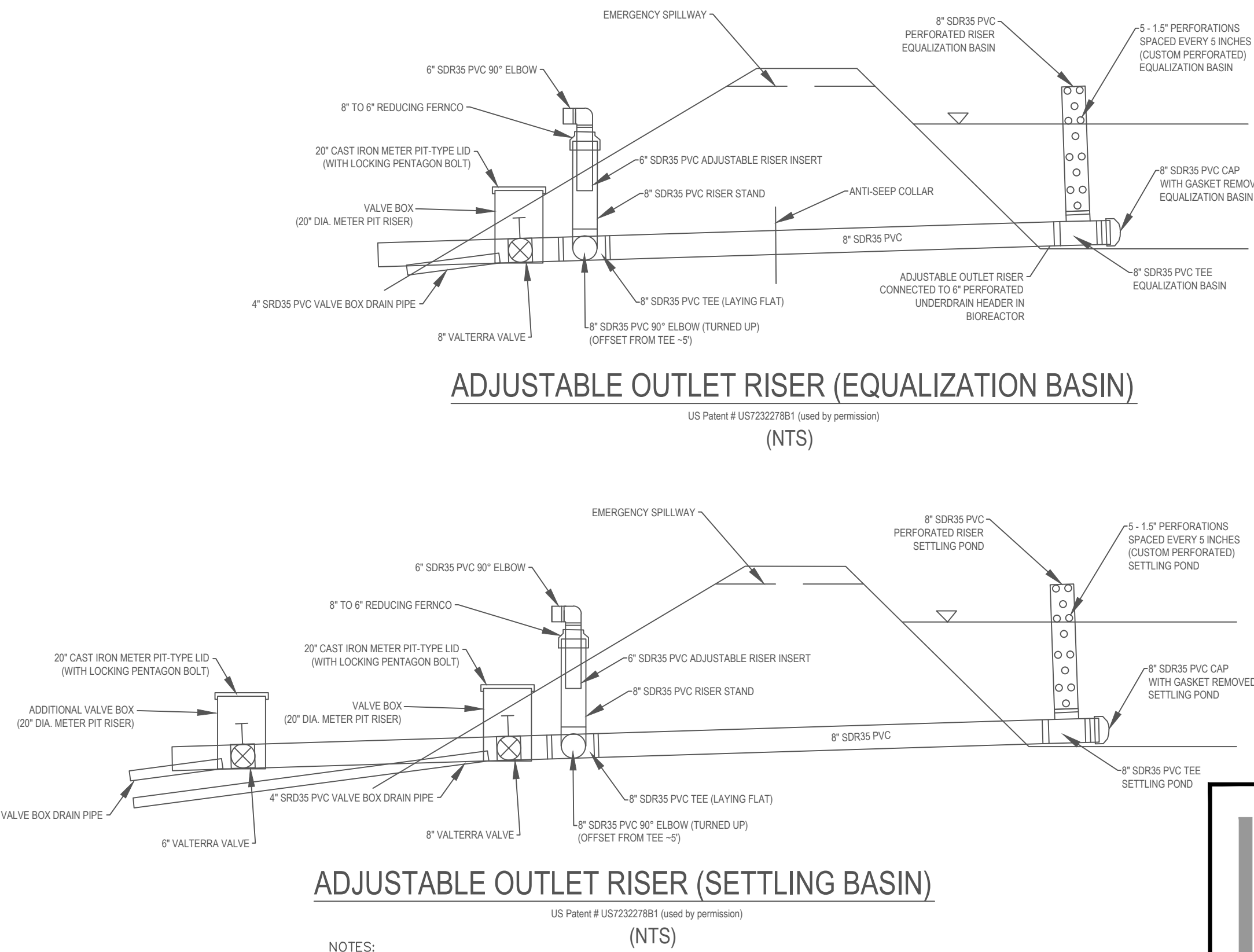
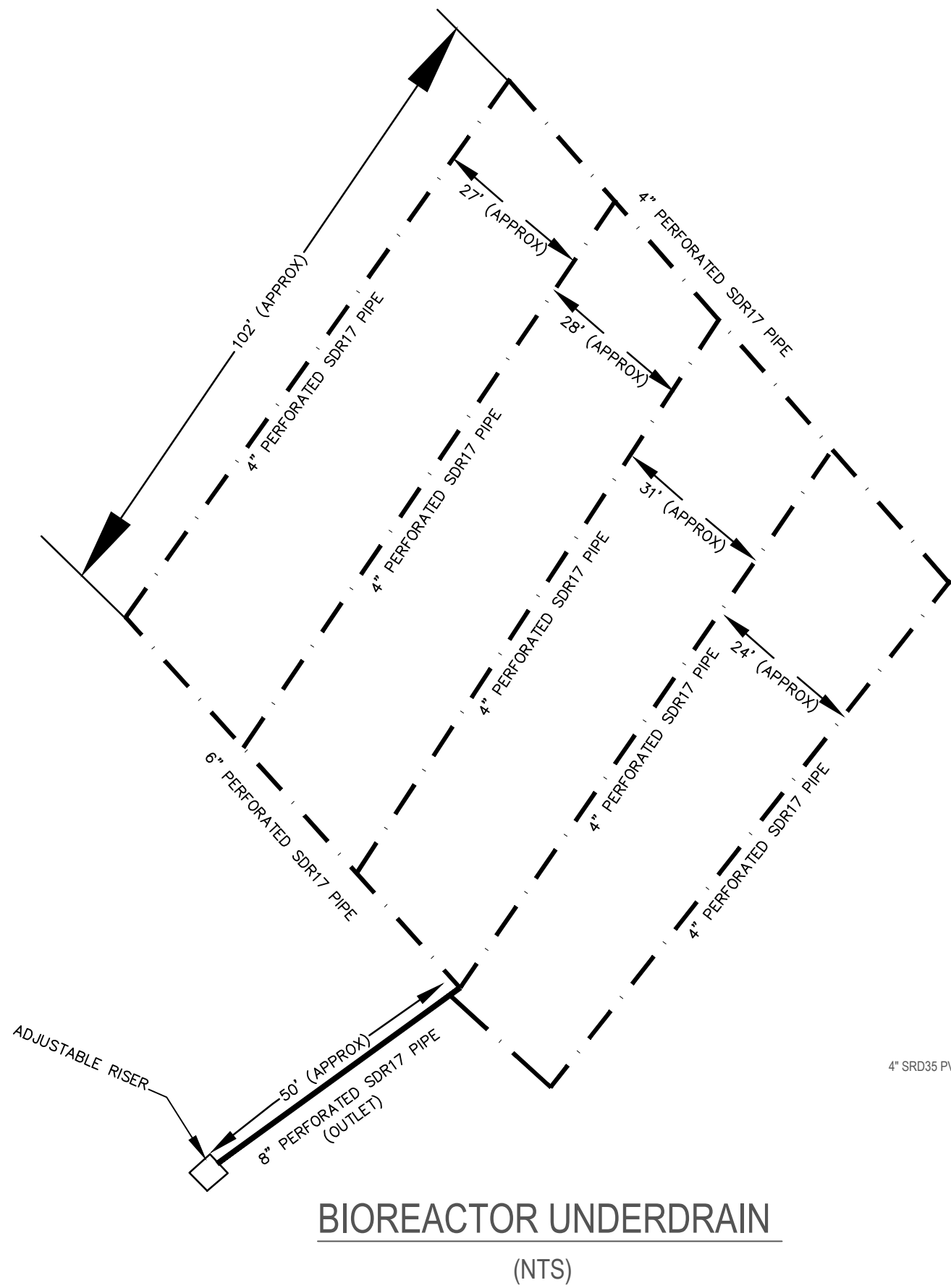
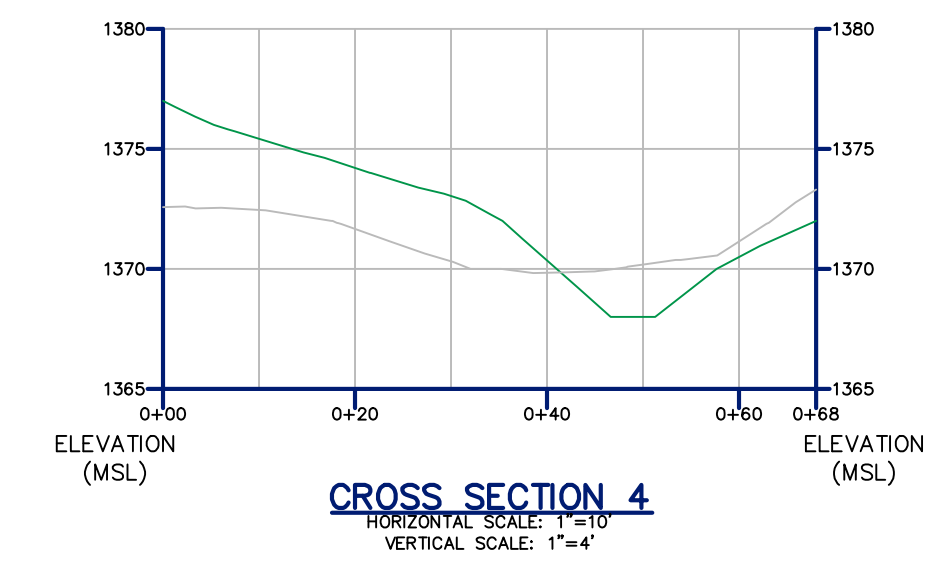
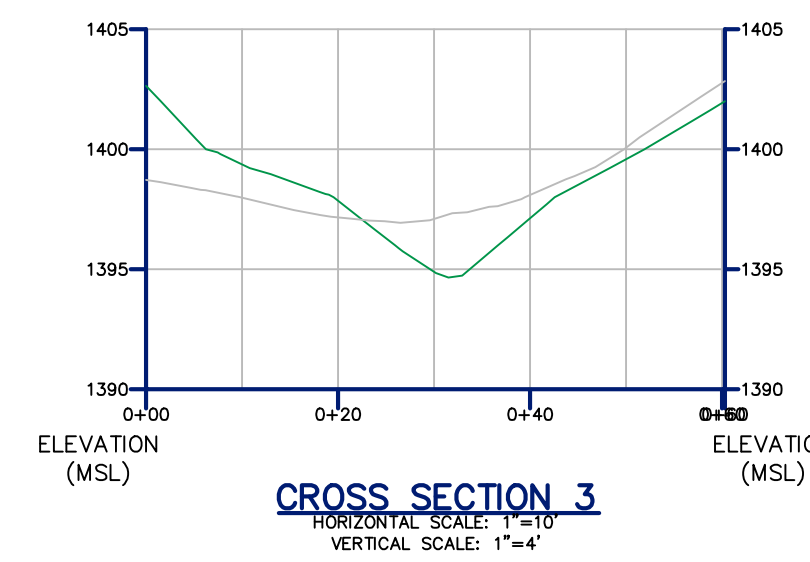
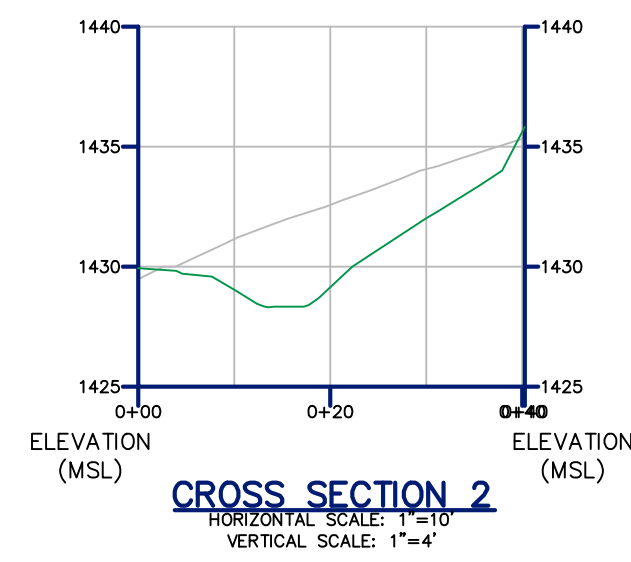
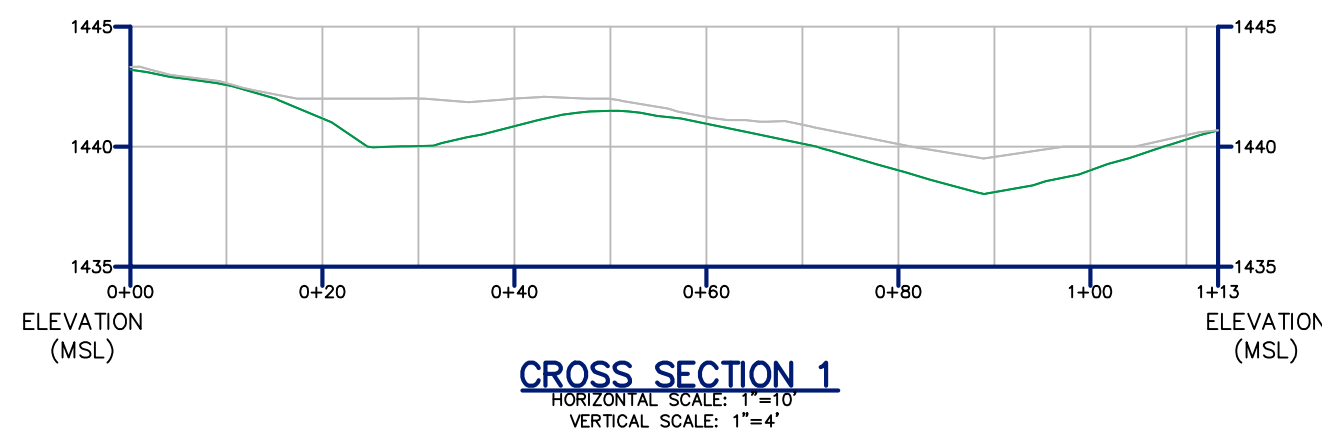
the WHM group
SM
2525 GREEN TECH DRIVE, SUITE B
STATE COLLEGE, PA 16803
TELEPHONE: (814)-889-1650 FAX: (814)-889-1557

CLEARFIELD COUNTY CONSERVATION DISTRICT
**DIMELING DISCHARGE
AMD PASSIVE TREATMENT SYSTEM**
AS-BUILT DRAWING
BOGGS TOWNSHIP CLEARFIELD COUNTY PENNSYLVANIA

DATE:	11/19/13
DRAWN BY:	BH
CHECKED:	KC
DRAWING NO.	CLFD005001
SHEET NO.	1 OF 2



- LEGEND**
- EXISTING GRADE
 - FINAL GRADE
 - WATER SURFACE
 - TREATMENT MEDIA
 - UNDERDRAIN (478 TON AASHTO #57)
 - GEOTEXTILE
- TREATMENT MEDIA MIXTURE**
- AASHTO # 3 (90% CaCO3 OR GREATER) = 1.525 TON
 - WOOD CHIPS = 575 TON
 - MUSHROOM COMPOST = 93 TON
 - HAY = 72 TON



REVISIONS		
DATE	ADDITIONAL DETAILS PER DEF COMMENTS	KC
12/13		

the W M groupSM

2525 GREEN TECH DRIVE, SUITE B
STATE COLLEGE, PA 16803

TELEPHONE: (814)-689-1650 FAX: (814)-689-1557

CLEARFIELD COUNTY CONSERVATION DISTRICT

**DIMLING DISCHARGE
AMD PASSIVE TREATMENT SYSTEM**

CROSS SECTIONS & DETAILS

BOGGS TOWNSHIP CLEARFIELD COUNTY PENNSYLVANIA

DATE: 11/19/13

DRAWN BY: BH

CHECKED: KC

DRAWING NO. CLFD005002

SHEET NO. 2 OF 2

NOTES:
1) ADDITIONAL OUTLET VALVE PIT WAS INSTALLED ON THE DRAIN LINE FROM THE SETTLING BASIN.