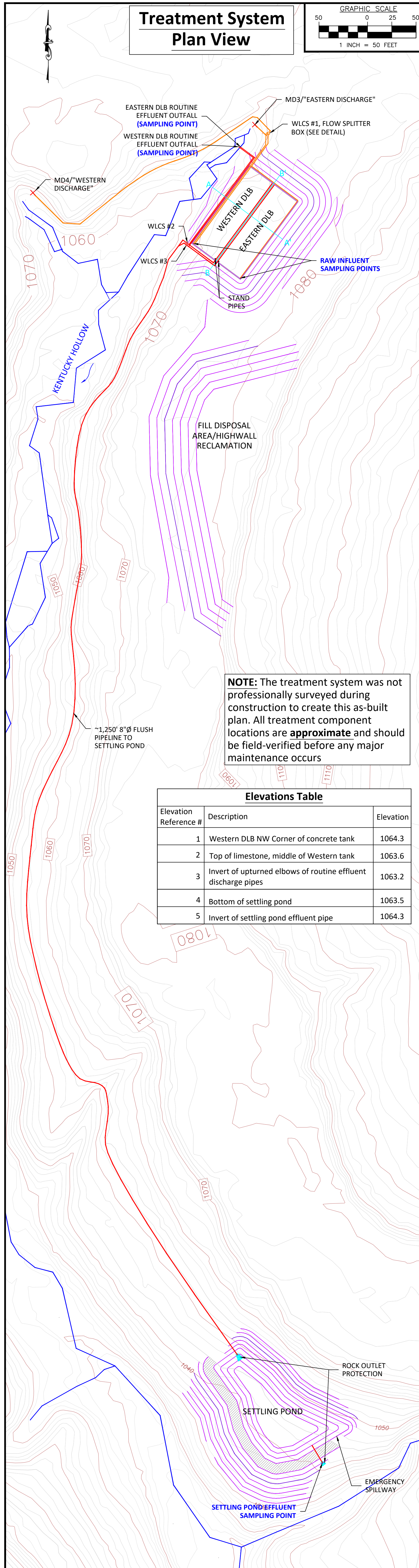
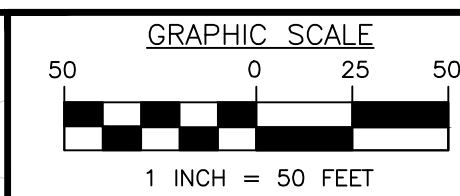


Treatment System Plan View



NOTE: The treatment system was not professionally surveyed during construction to create this as-built plan. All treatment component locations are **approximate** and should be field-verified before any major maintenance occurs

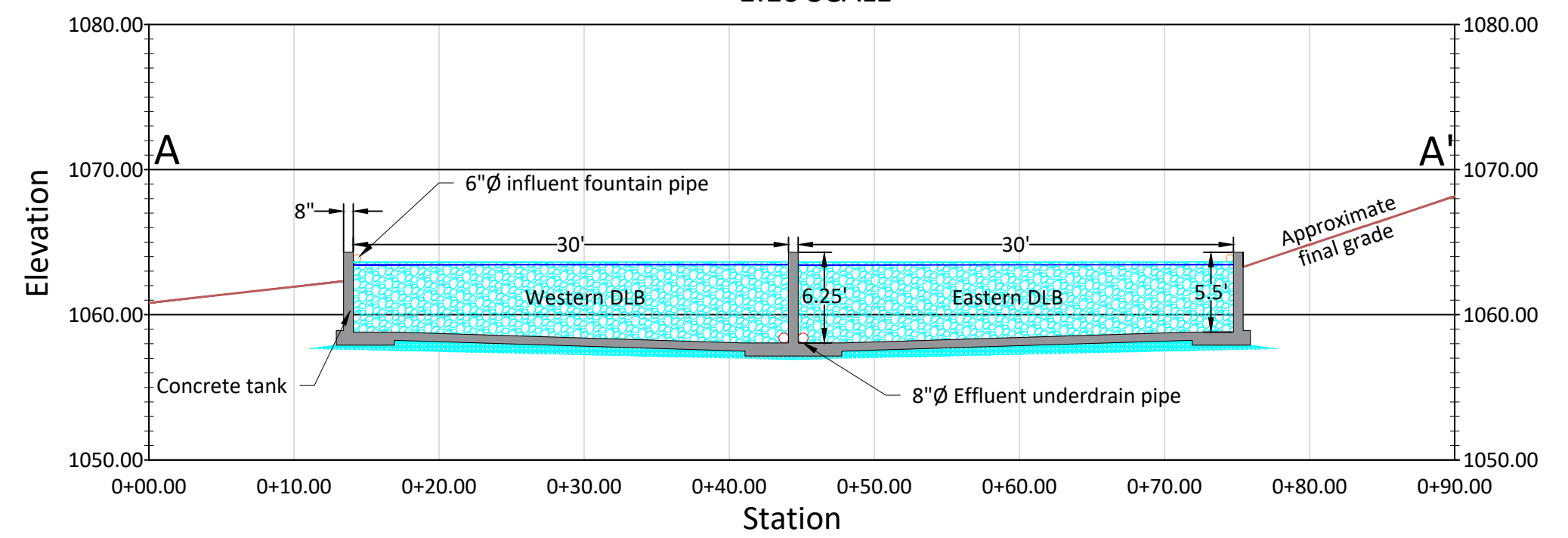
Elevations Table		
Elevation Reference #	Description	Elevation
1	Western DLB NW Corner of concrete tank	1064.3
2	Top of limestone, middle of Western tank	1063.6
3	Invert of upturned elbows of routine effluent discharge pipes	1063.2
4	Bottom of settling pond	1063.5
5	Invert of settling pond effluent pipe	1064.3

LEGEND:

- Proposed major contour
- Proposed minor contour
- Existing ground major contour
- Existing ground minor contour
- Influent pipe
- Effluent pipe
- Water body
- Top of berm

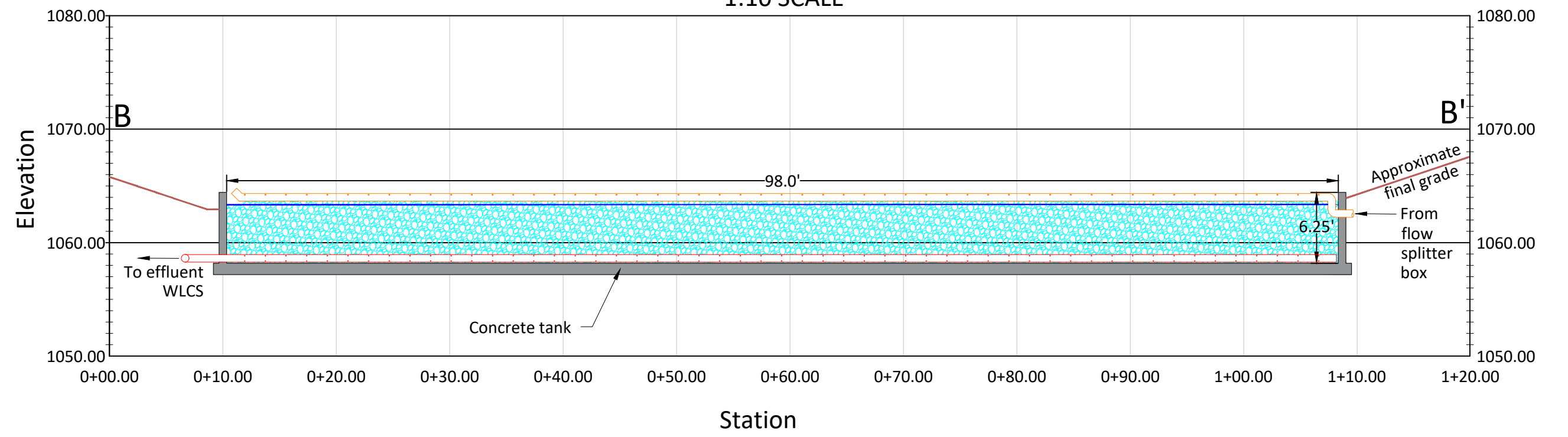
Section A-A'

1:10 SCALE



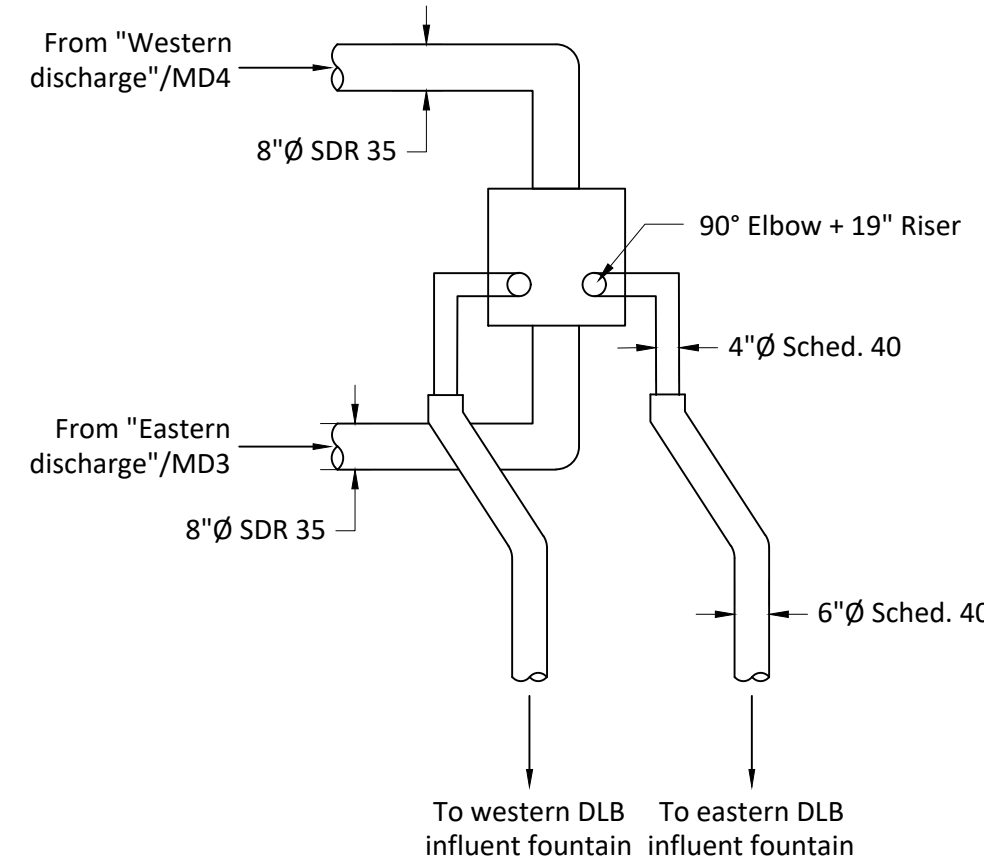
Section B-B'

1:10 SCALE



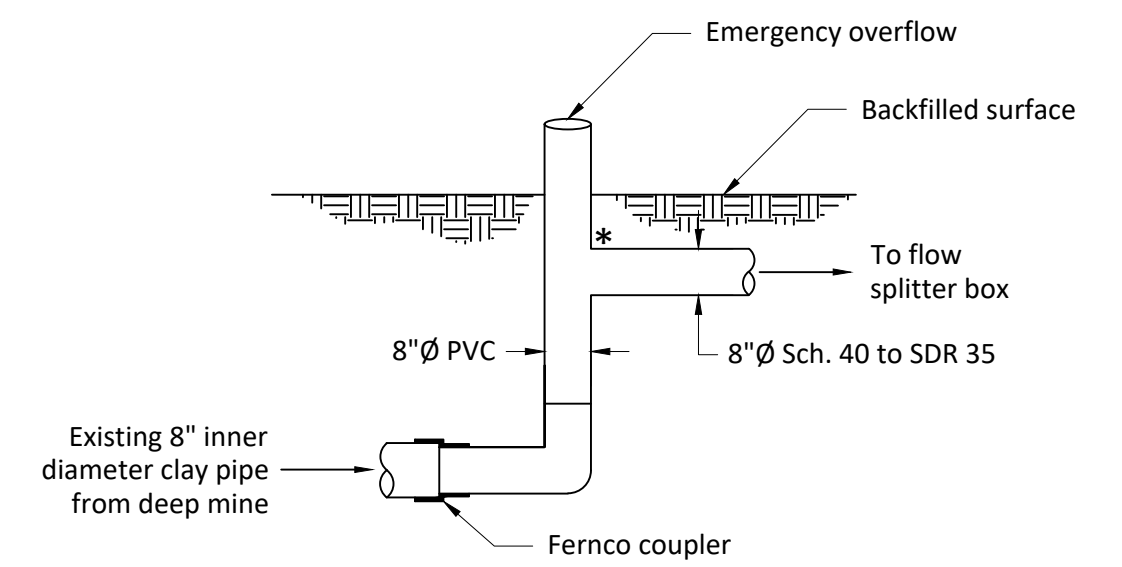
Flow Splitter Box Detail

NO SCALE



Collection Systems Detail

NO SCALE

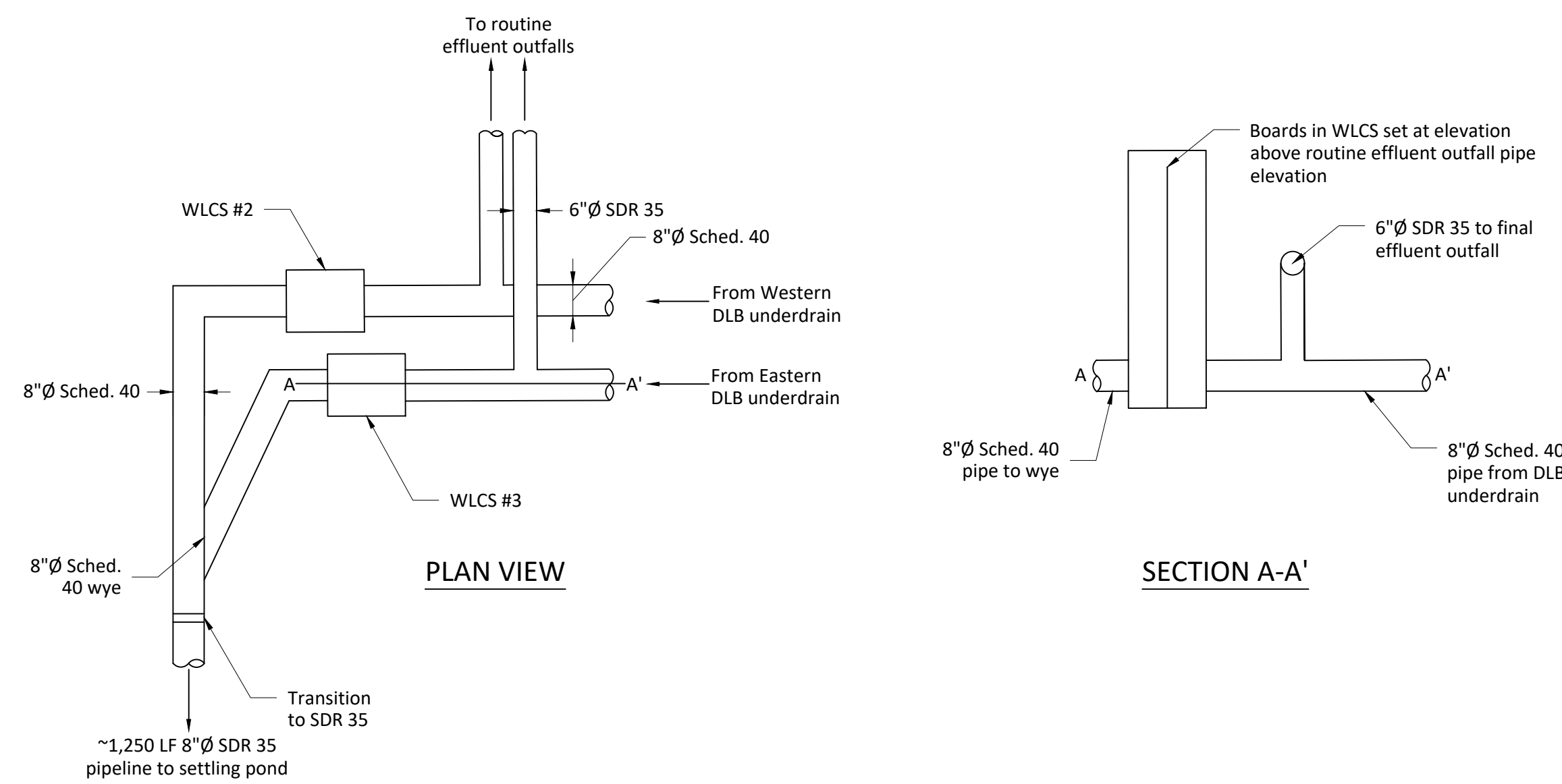


***NOTE:** The same collection system was installed at both discharges. The Western Discharge/MD4 also contains a piece of 3/4" flexible hose installed at the approximate location of the asterisk above. This flexible hose conveys 1-2 gal/min of raw AMD to the wetland, as required by the project's permit conditions.

There are capped monitoring wells located nearby each collection system. Each monitoring well is installed in aggregate, separate from the collection plumbing, and is capped above the surface.

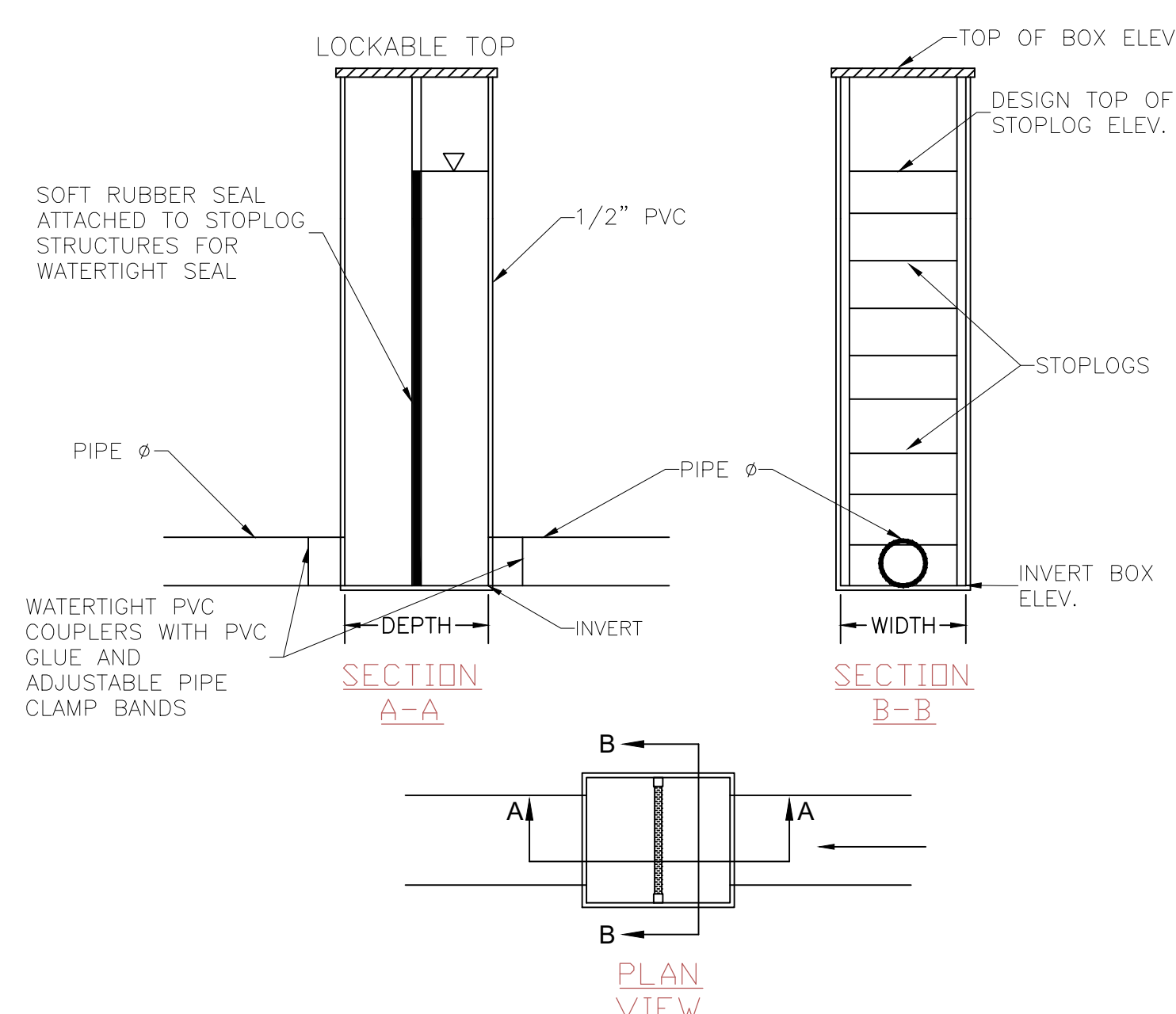
DLB Effluent Plumbing Details

NO SCALE



WLCs - In-line Water Level Control Structure

NO SCALE



NOTES:

- WLCs #1 is not used to control water level. It is used to split flows between the two DLB's (see flow splitter box detail above).
- All elevations in this table were surveyed by HE from the northwest corner of the concrete tank (BM elevation 1064.3')

INLINE STRUCTURE	TOP OF BOX ELEV.	INVERT BOX ELEV.	STRUCTURE HEIGHT (FT)	INSIDE DIMENSION WIDTH	INSIDE DIMENSION DEPTH	PIPE Ø	TOP STOPLOG ELEV.
1	±1067.7	±1062.7	5	24"	26"	SEE NOTE #1	
2	±1064.5	±1058.0	6.5	14"	16"	8"	±1063.4
3	±1064.5	±1058.0	6.5	14"	16"	8"	±1063.4

1 OF 1

HedinEnvironmental
 195 Castle Shannon Blvd.
 Pittsburgh, PA 15228
 www.hedinenv.com

Kentucky Hollow Passive AMD Treatment System as-built plans

PBG Kentucky Hollow

MUNICIPALITY: Pittsburgh	DATE: 1/20/19	FILE NAME:
COUNTY: Allegheny	DRAWN BY: NEA	SCALE: As Shown