

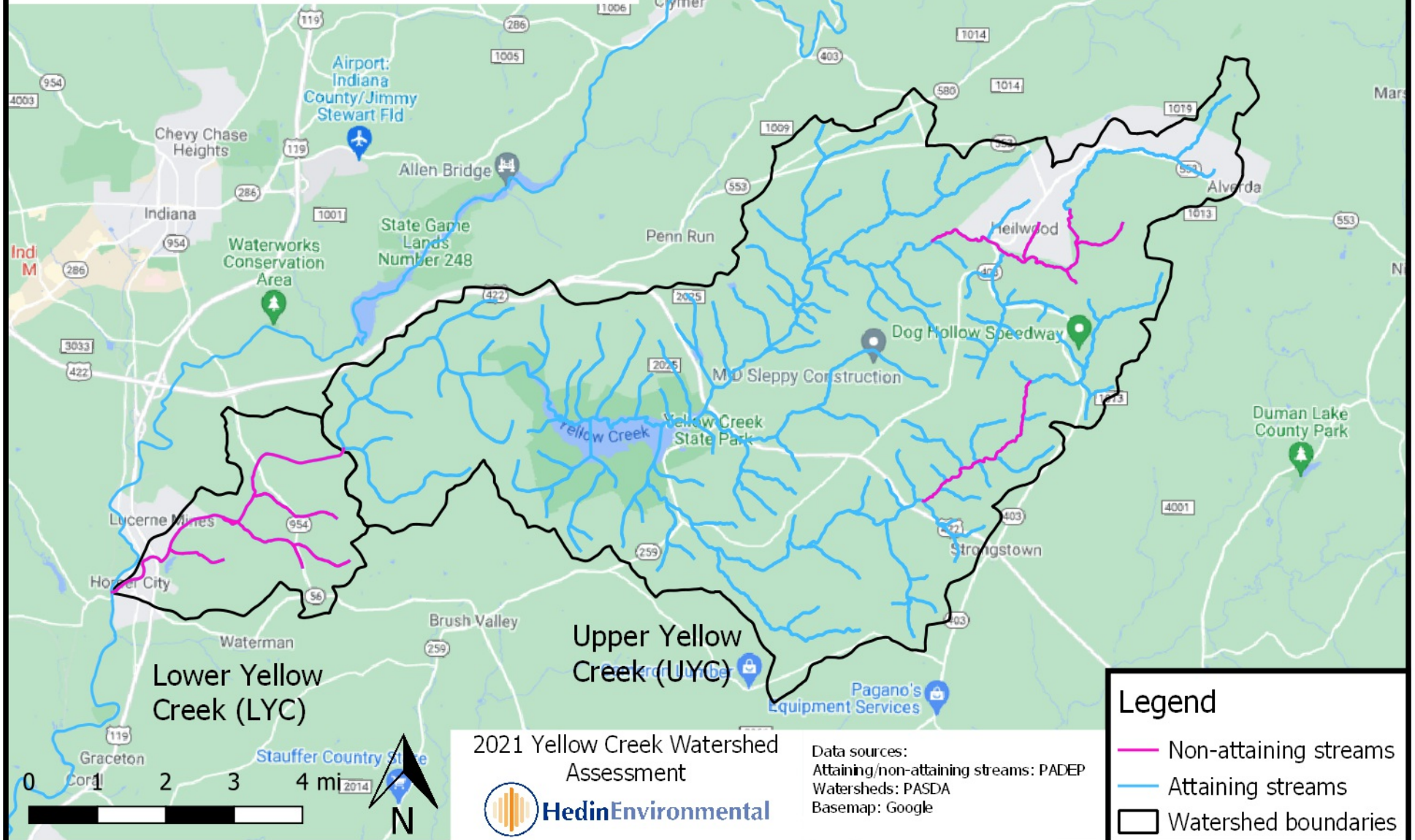
# Yellow Creek Watershed Assessment

January 2022

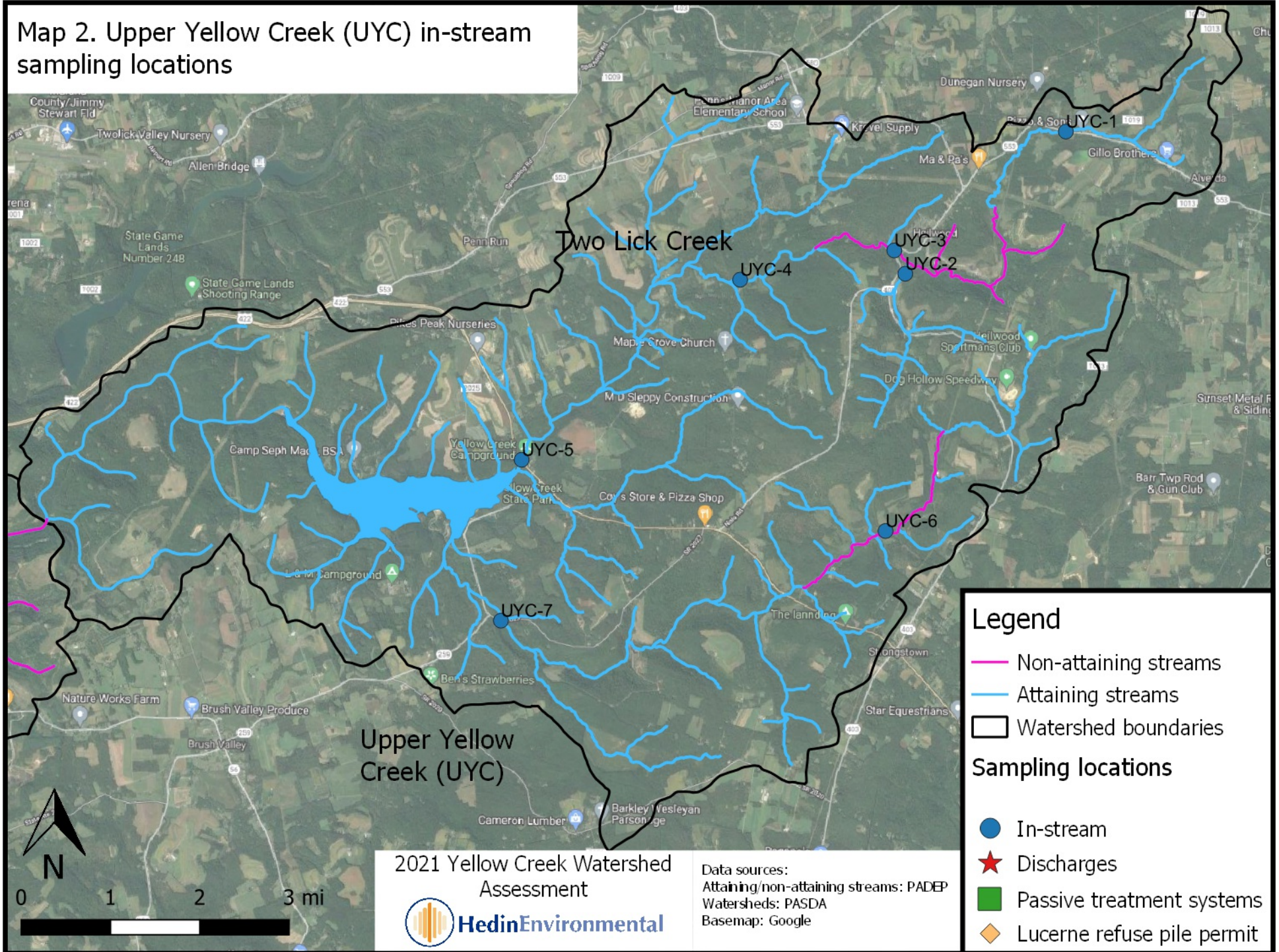
## Maps

- Map 1. Yellow Creek watershed
- Map 2. Upper Yellow Creek (UYC) in-stream sampling locations
- Map 3. Lower Yellow Creek (LYC) sampling locations
- Map 4. LYC sampling locations around the Tide refuse pile
- Map 5. LYC sampling locations around the Lucerne refuse pile
- Map 6. Abandoned mine workings below the Lucerne refuse pile
- Map 7. Tide refuse pile Abandoned Mine Land (AML)
- Map 8. 1A/1B passive treatment system and sampling locations
- Map 9. 2A/2B passive treatment system and sampling locations
- Map 10. 2C passive treatment system and sampling locations
- Map 11. Route 119 borehole discharge and potential treatment area

Map 1. Yellow Creek watershed, a tributary to Two Lick Creek, divided into upper Yellow Creek (UYC) and lower Yellow Creek (LYC) watersheds. Non-attaining sections of stream are shown in purple.



Map 2. Upper Yellow Creek (UYC) in-stream sampling locations



**Legend**

- Non-attaining streams
- Attaining streams
- Watershed boundaries

**Sampling locations**

- In-stream
- ★ Discharges
- Passive treatment systems
- ◆ Lucerne refuse pile permit

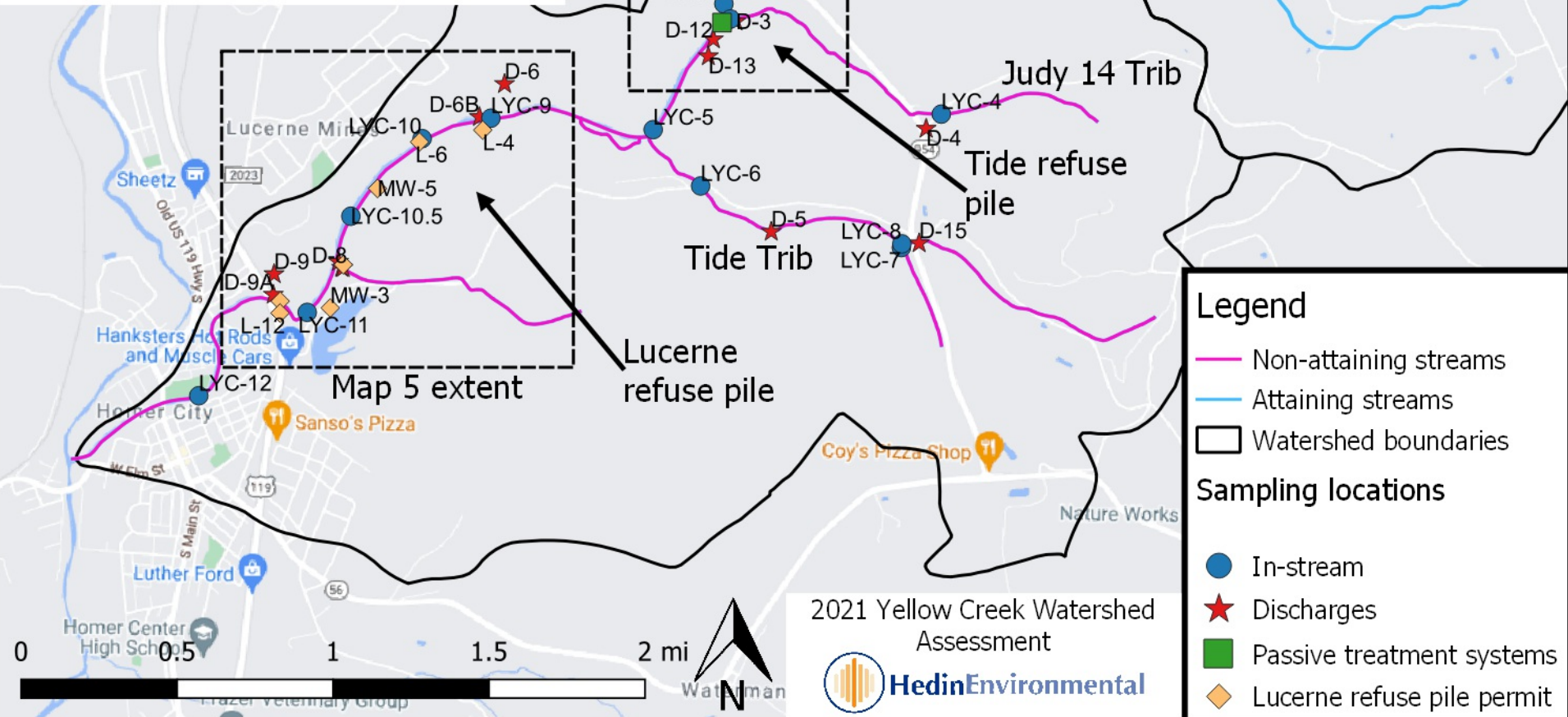
2021 Yellow Creek Watershed Assessment



Data sources:  
 Attaining/non-attaining streams: PADEP  
 Watersheds: PASDA  
 Basemap: Google

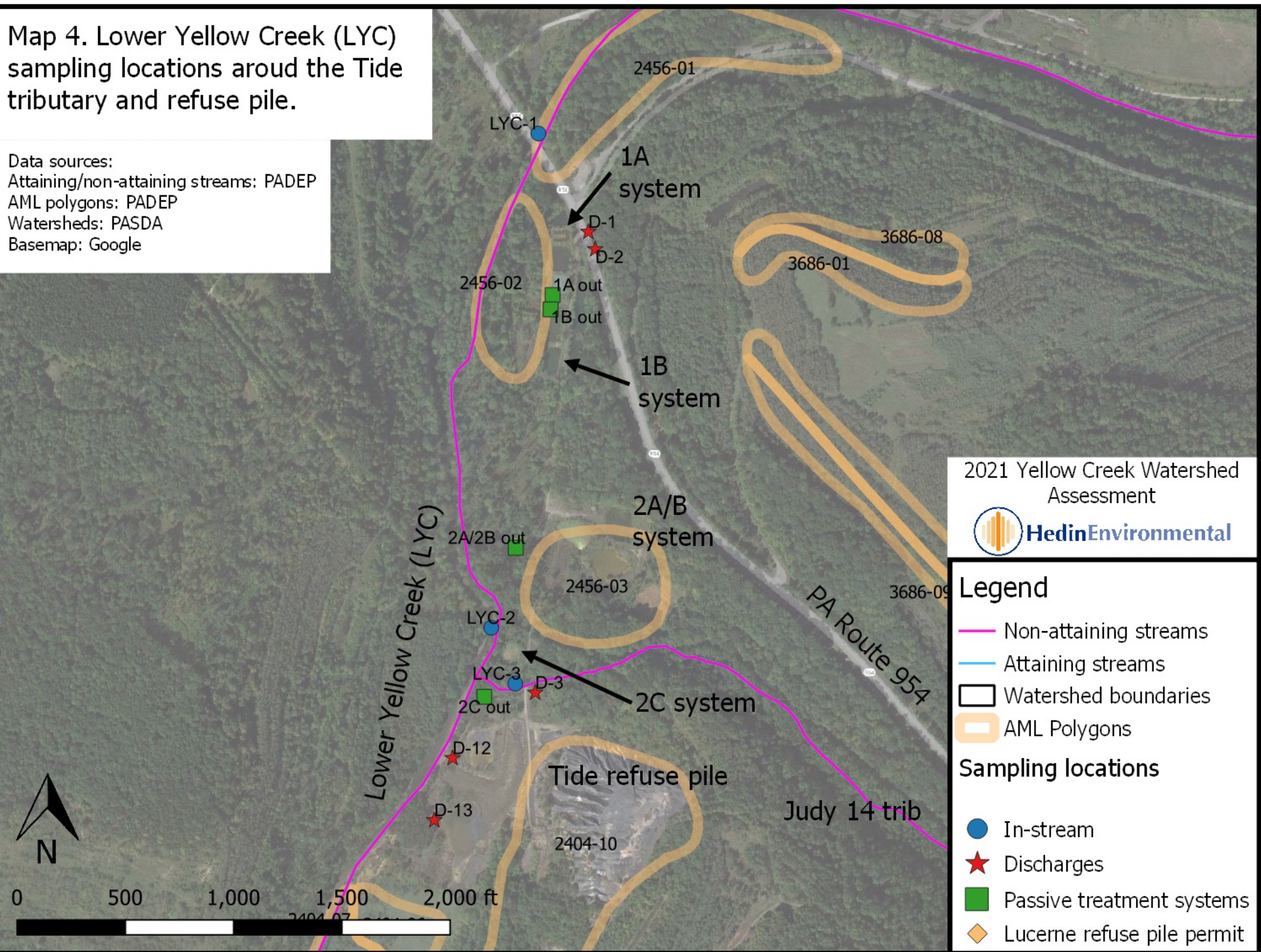
Map 3. Lower Yellow Creek (LYC) sampling locations. Data from in-stream, discharges, and select passive treatment systems were collected in this study. Data from remaining passive treatment systems were retrieved from datashed.org. Data from the Lucerne refuse pile permit was retrieved from the PADEP. Dashed boxes indicate the extent of more detailed maps.

Data sources:  
 Attaining/non-attaining streams: PADEP  
 Watersheds: PASDA  
 Basemap: Google



Map 4. Lower Yellow Creek (LYC) sampling locations around the Tide tributary and refuse pile.

Data sources:  
 Attaining/non-attaining streams: PADEP  
 AML polygons: PADEP  
 Watersheds: PASDA  
 Basemap: Google



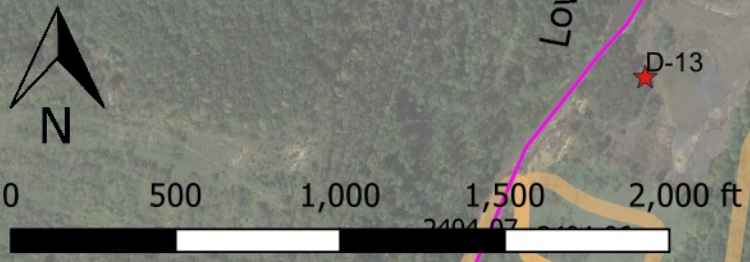
2021 Yellow Creek Watershed Assessment  
 Hedin Environmental

**Legend**

- Non-attaining streams
- Attaining streams
- ▭ Watershed boundaries
- ◊ AML Polygons

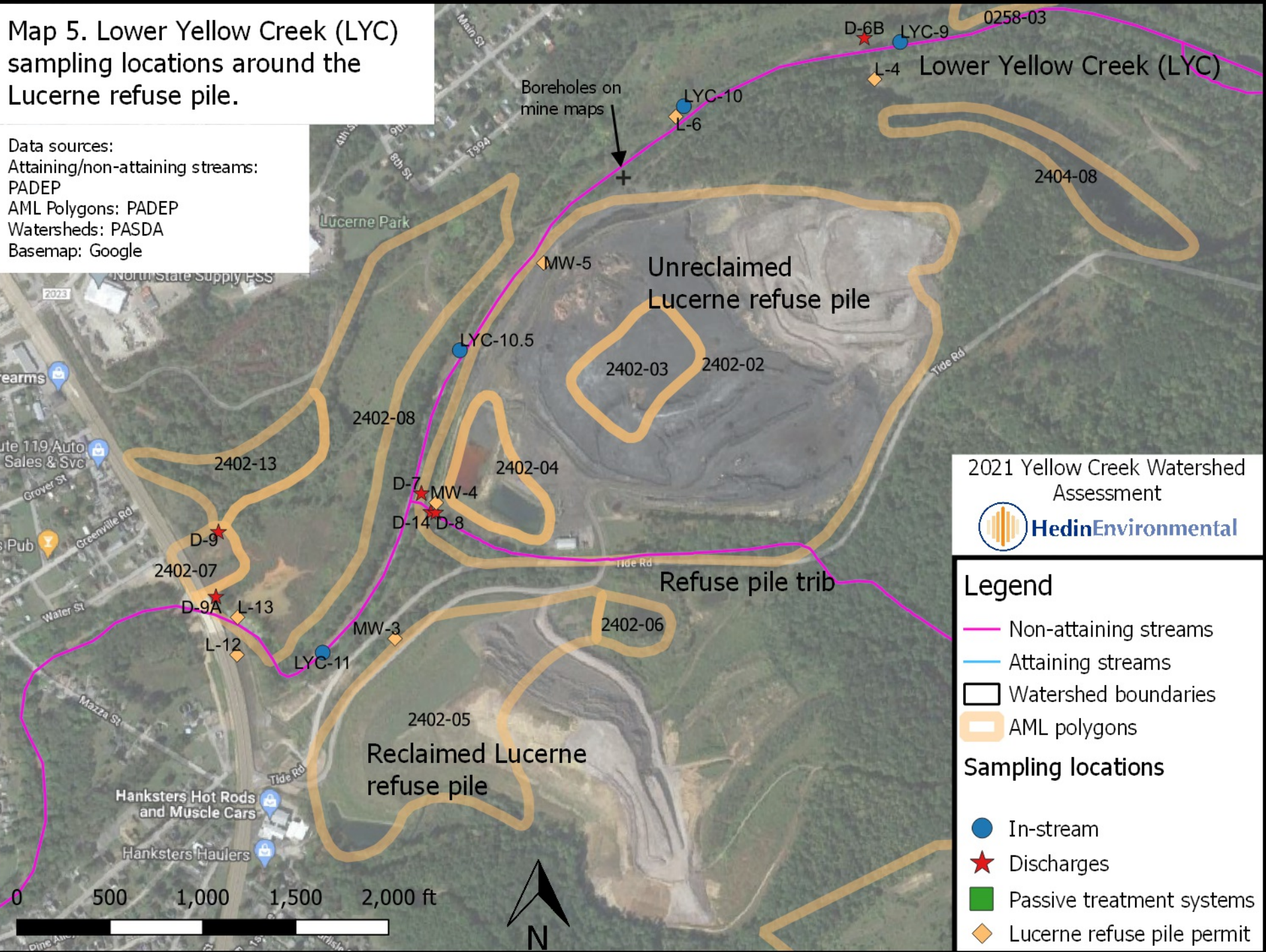
**Sampling locations**

- In-stream
- ★ Discharges
- Passive treatment systems
- ◆ Lucerne refuse pile permit



# Map 5. Lower Yellow Creek (LYC) sampling locations around the Lucerne refuse pile.

Data sources:  
 Attaining/non-attaining streams:  
 PADEP  
 AML Polygons: PADEP  
 Watersheds: PASDA  
 Basemap: Google



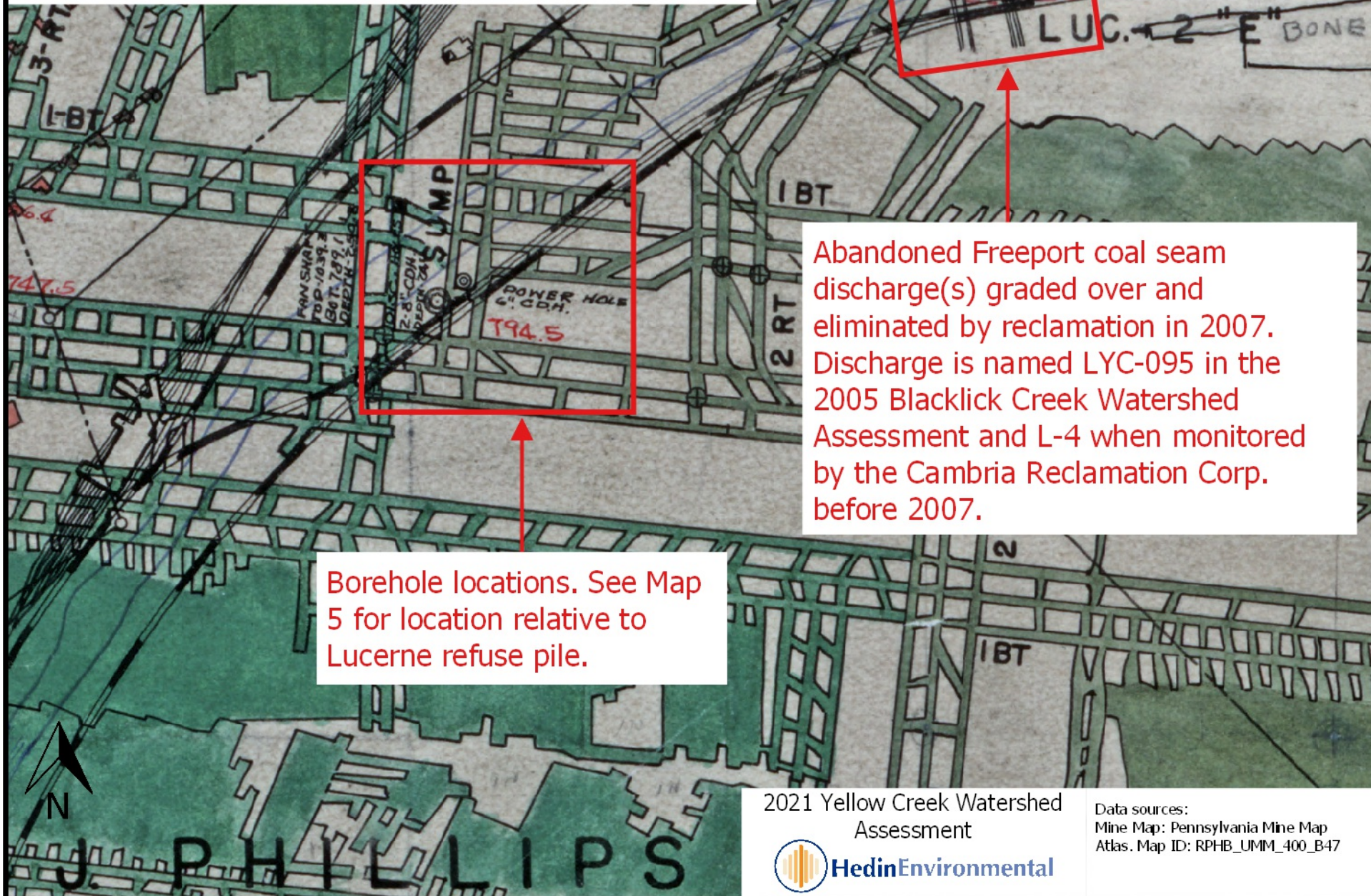
2021 Yellow Creek Watershed Assessment



### Legend

- Non-attaining streams
  - Attaining streams
  - Watershed boundaries
  - AML polygons
- ### Sampling locations
- In-stream
  - ★ Discharges
  - Passive treatment systems
  - ◆ Lucerne refuse pile permit

Map 6. Abandoned Kittanning coal seam workings below the Lucerne refuse pile. Boreholes and a reclaimed Freeport coal seam discharge are noted.

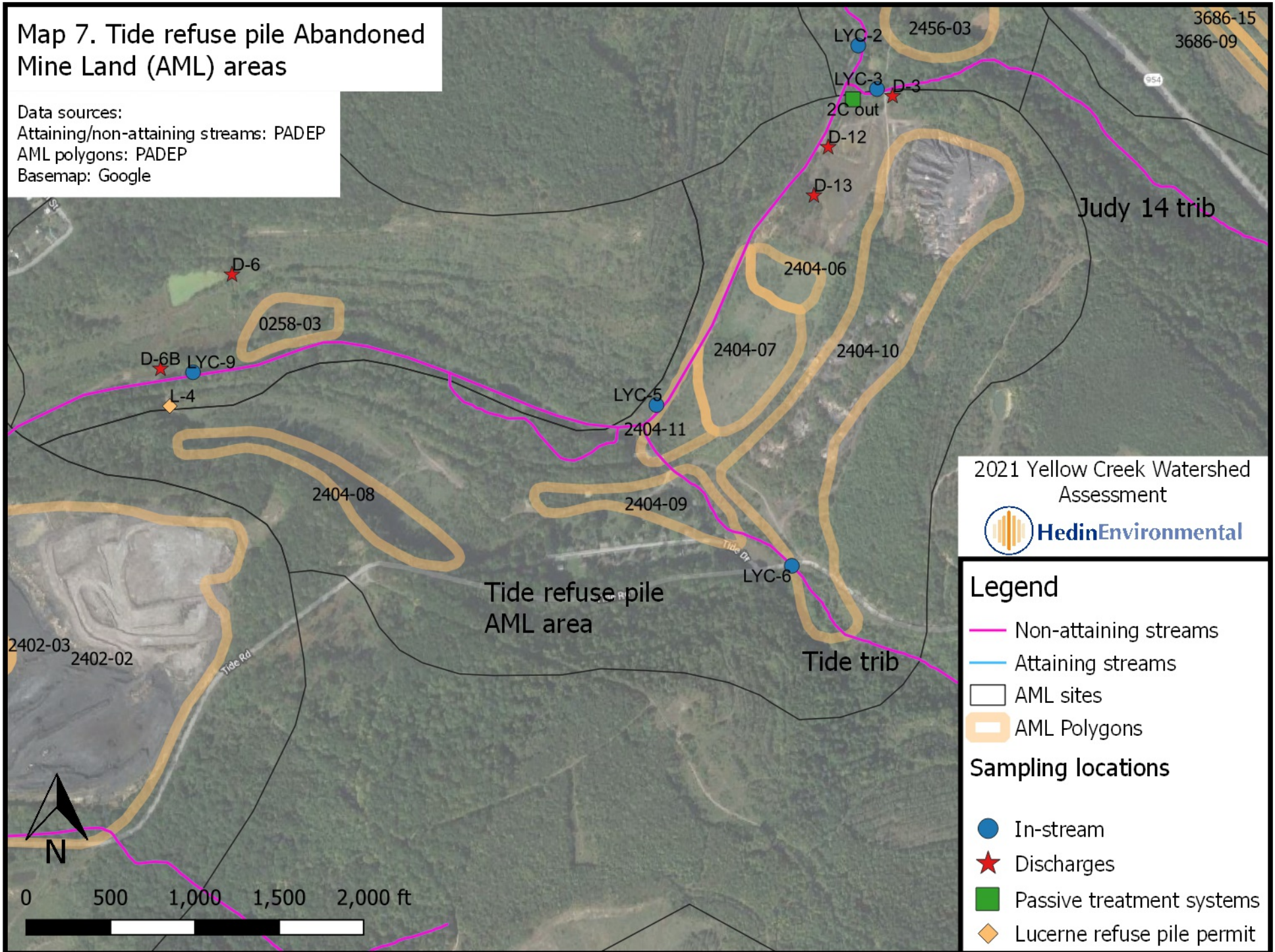


Abandoned Freeport coal seam discharge(s) graded over and eliminated by reclamation in 2007. Discharge is named LYC-095 in the 2005 Blacklick Creek Watershed Assessment and L-4 when monitored by the Cambria Reclamation Corp. before 2007.

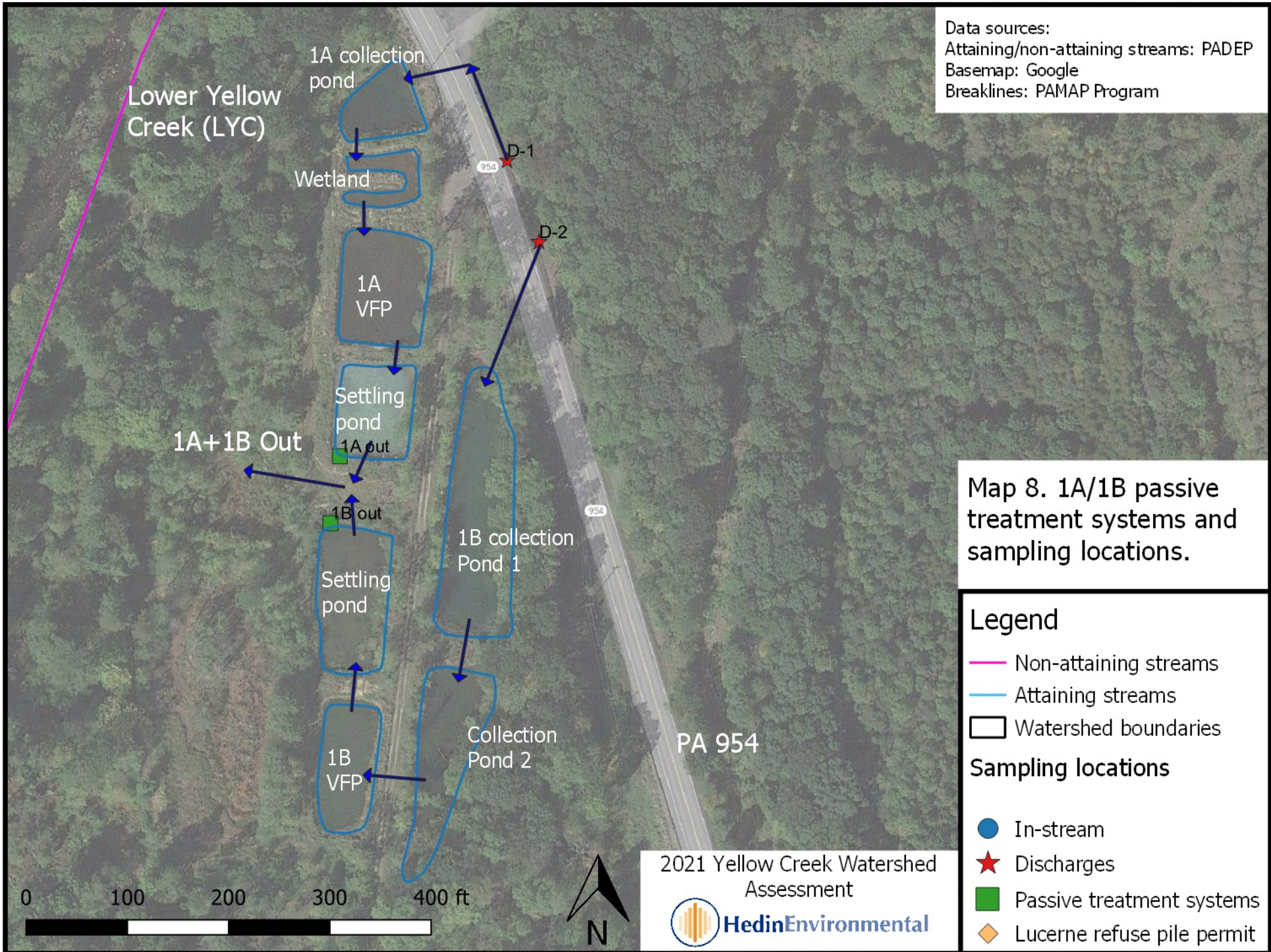
Borehole locations. See Map 5 for location relative to Lucerne refuse pile.

# Map 7. Tide refuse pile Abandoned Mine Land (AML) areas

Data sources:  
Attaining/non-attaining streams: PADEP  
AML polygons: PADEP  
Basemap: Google







Data sources:  
 Attaining/non-attaining streams: PADEP  
 Basemap: Google  
 Breaklines: PAMAP Program

Map 8. 1A/1B passive treatment systems and sampling locations.

**Legend**

- Non-attaining streams
- Attaining streams
- Watershed boundaries

**Sampling locations**

- In-stream
- ★ Discharges
- Passive treatment systems
- ◆ Lucerne refuse pile permit

# Map 9. 2A/B passive treatment system and sampling locations.

2021 Yellow Creek Watershed Assessment



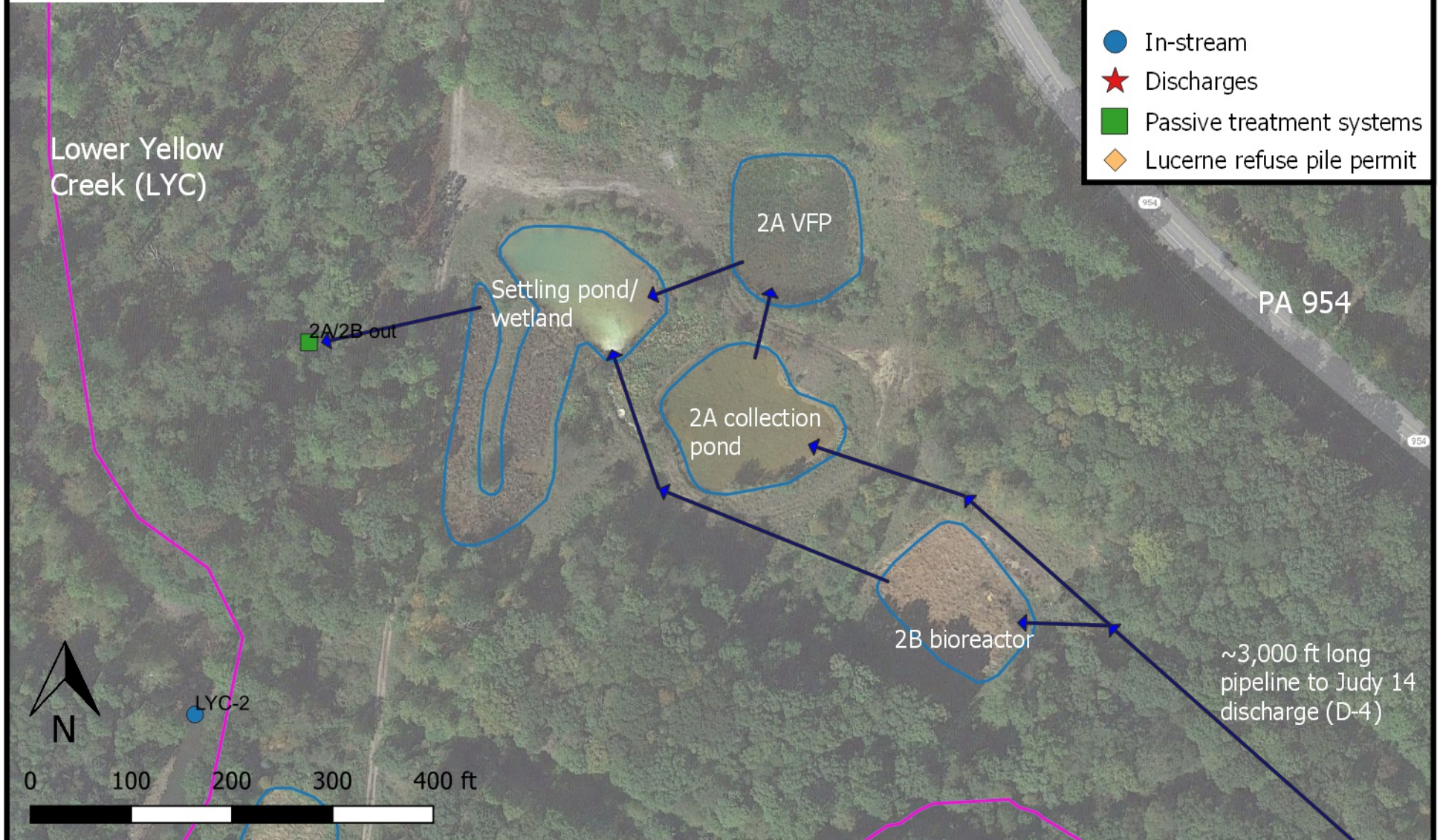
Data sources:  
Attaining/non-attaining streams: PADEP  
Breaklines: PAMAP program  
Basemap: Google

## Legend

- Non-attaining streams
- Attaining streams
- Watershed boundaries

## Sampling locations

- In-stream
- Discharges
- Passive treatment systems
- Lucerne refuse pile permit



# Map 10. 2C passive treatment system and sampling locations.

2021 Yellow Creek Watershed Assessment



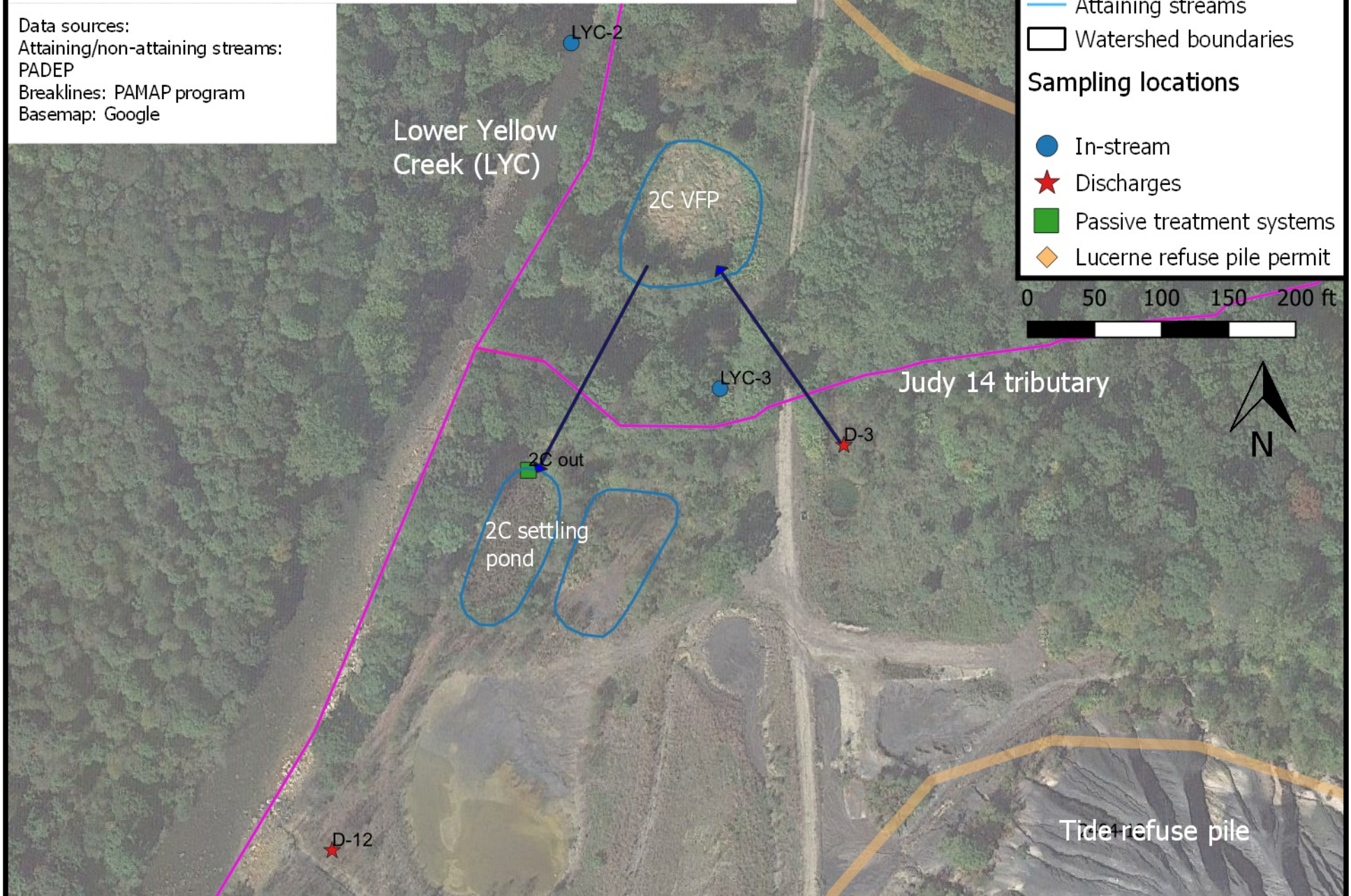
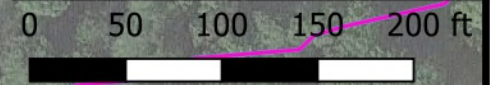
Data sources:  
Attaining/non-attaining streams:  
PADEP  
Breaklines: PAMAP program  
Basemap: Google

## Legend

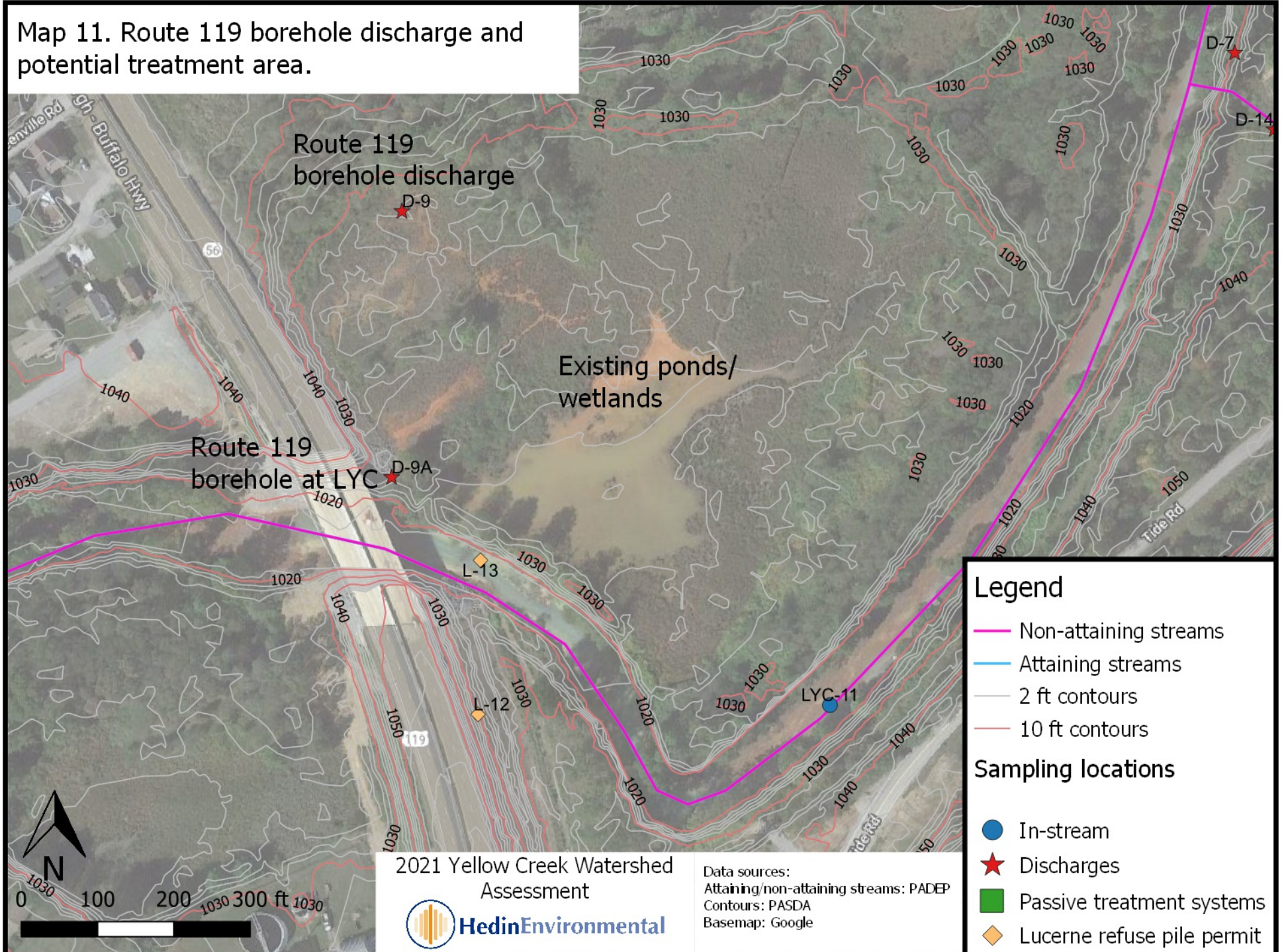
- Non-attaining streams
- Attaining streams
- Watershed boundaries

## Sampling locations

- In-stream
- Discharges
- Passive treatment systems
- Lucerne refuse pile permit



Map 11. Route 119 borehole discharge and potential treatment area.



2021 Yellow Creek Watershed Assessment



Data sources:  
 Attaining/non-attaining streams: PADEP  
 Contours: PASDA  
 Basemap: Google

### Legend

- Non-attaining streams
- Attaining streams
- 2 ft contours
- 10 ft contours

### Sampling locations

- In-stream
- ★ Discharges
- Passive treatment systems
- ◆ Lucerne refuse pile permit