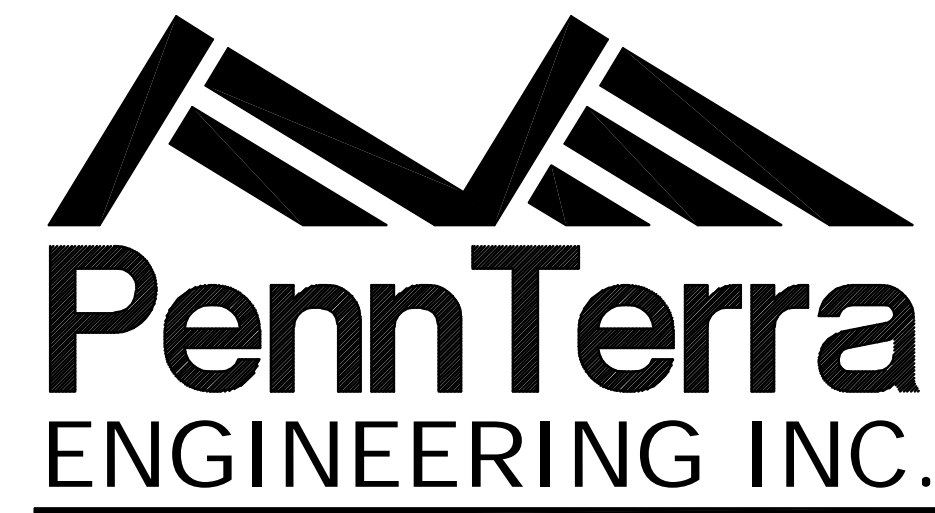


PURITAN DISCHARGE PROPOSED FeAlMn BED PORTAGE TOWNSHIP

CAMBRIA COUNTY, PENNSYLVANIA

SPONSORED BY

TROUT RUN WATERSHED ASSOCIATION
CAMBRIA COUNTY CONSERVATION DISTRICT
PA DEPARTMENT OF ENVIRONMENTAL PROTECTION



OCTOBER 12, 2009
LAST REVISED: MARCH 2, 2011

ACT 287 LIST OF UTILITIES

THE CONTRACTOR SHALL COMPLY WITH THE PROVISIONS OF ACT 287 OF 1974 AS AMENDED BY ACT 187 OF 1996 FOR NOTIFICATION OF UTILITIES BEFORE EXCAVATION IN CONTRACT AREA. THE UNDERGROUND UTILITIES LOCATION CALL NUMBER IS 1-800-242-1776.

- | | |
|---|--|
| <p>REA ENERGY COOPERATIVE INC
PO BOX 70
INDIANA, PA. 157010070
CONTACT: CHRIS MASTERSON</p> <p>CENTRAL MAINLINE SEWER AUTHORITY
PO BOX 35
LILLY, PA. 159380035
CONTACT: OFFICE PERSONNEL</p> <p>VERIZON PENNSYLVANIA INC
201 STANWIX ST 4TH FLOOR
PITTSBURGH, PA. 15222
CONTACT: OFFICE PERSONNEL</p> <p>FIRSTENERGY CORP
311 INDUSTRIAL PARK RD
JOHNSTOWN, PA. 15904
CONTACT: MARTY KERCH</p> <p>FIRSTENERGY CORP
405 W PLANK RD
ALTOONA, PA. 16602
CONTACT: WAYNE HUNTER</p> <p>PORTAGE TOWNSHIP
416 MILLER SHAFT RD
PORTAGE, PA. 15946
CONTACT: LISA FLYNN
EMAIL: portagetownship@verizon.net</p> <p>COMPANY: PORTAGE AREA SEWER AUTHORITY
606 CAMBRIA ST
PORTAGE, PA. 15946
CONTACT: MIKE CIKOTA</p> | <p>PORTAGE MUNICIPAL AUTH OF WTR DEPT
606 CAMBRIA STREET
PORTAGE, PA. 15946
CONTACT: JOE STANCOVICH</p> <p>QWEST COMMUNICATIONS
WY M32 12 700 W MINERAL AVE
LITTLETON, CO. 80120
CONTACT: TONI TAYLOR
EMAIL: toni.taylor@qwest.com</p> <p>VERIZON NORTH
2201 EAST 30TH STREET
ERIE, PA. 16510
CONTACT: MICHAEL A GEARY
EMAIL: michael.geary@verizon.com</p> <p>TRI TOWNSHIP WATER AUTHORITY
491 MILL RD
SIDMAN, PA. 15955
CONTACT: JANET GLACKEN</p> |
|---|--|

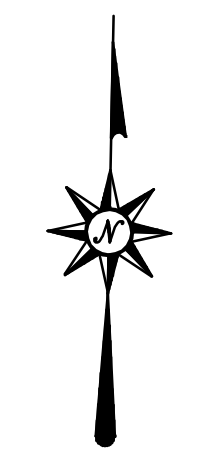
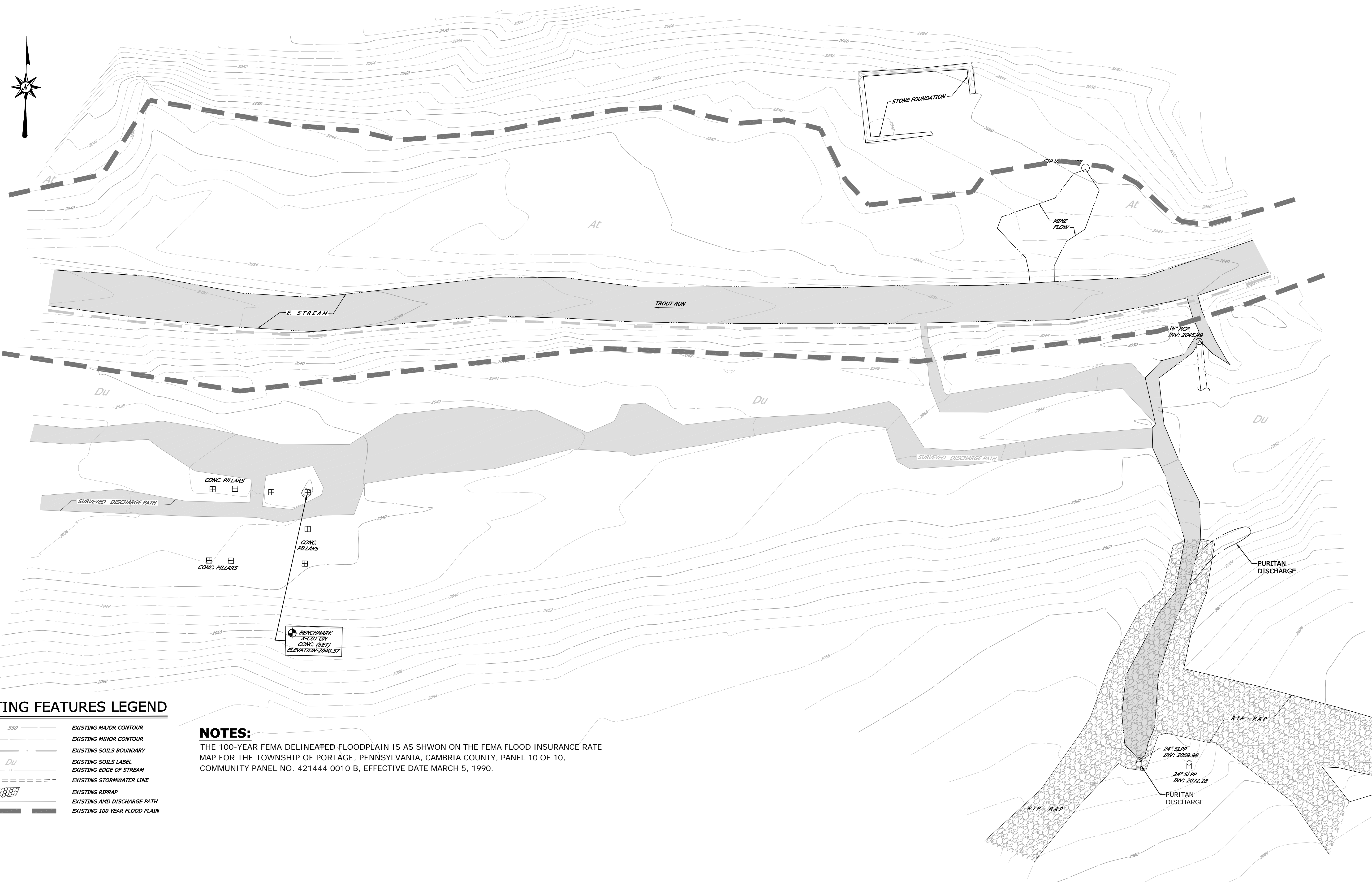
SHEET INDEX

SHEET	DESCRIPTION
1.00	COVER SHEET
2.00	EXISTING PLAN
3.00	FINAL PLAN
4.00	EROSION & SEDIMENTATION CONTROL PLAN
4.01	EROSION & SEDIMENT CONTROL DETAILS AND NOTES
5.00 - 5.01	BASELINE PROFILES
6.00	DETAILS



PENNSYLVANIA ACT 187 (1996) AS AMENDED
REQUIRES THREE (3) WORKING DAYS NOTICE FOR
CONSTRUCTION PHASE AND TEN (10) WORKING
DAYS IN DESIGN STAGE.
PA ONE-CALL SERIAL NO. 2177572-000
HAS BEEN ASSIGNED TO THIS PROJECT.

PURITAN DISCHARGE



EXISTING FEATURES LEGEND

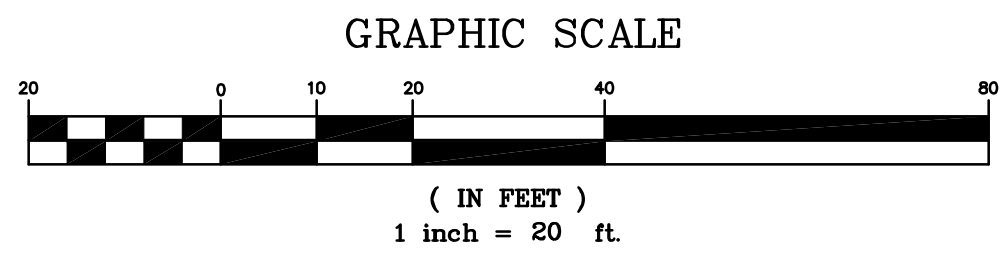
- EXISTING MAJOR CONTOUR
- EXISTING MINOR CONTOUR
- EXISTING SOILS BOUNDARY
- EXISTING SOILS LABEL
- EXISTING EDGE OF STREAM
- EXISTING STORMWATER LINE
- EXISTING RIPRAP
- EXISTING AND DISCHARGE PATH
- EXISTING 100 YEAR FLOOD PLAIN

NOTES:

THE 100-YEAR FEMA DELINEATED FLOODPLAIN IS AS SHOWN ON THE FEMA FLOOD INSURANCE RATE MAP FOR THE TOWNSHIP OF PORTAGE, PENNSYLVANIA, CAMBRIA COUNTY, PANEL 10 OF 10, COMMUNITY PANEL NO. 421444 0010 B, EFFECTIVE DATE MARCH 5, 1990.

EXISTING SOILS LEGEND

Du - DUMPS, MINE
At - ATRIKS SILT LOAM



Designer	NRC
Draftsman	JMM
ProjManager	TNS
Surveyor	N/A
Perimeter Cl.	
Book	Pg
Draw	C: View/Snap
Acad	07012 Puritan Discharge

03/02/2011	PER INTERNAL REVIEW
09/21/2010	PER REP COMMENT LETTER
03/15/2010	PER REP COMMENT LETTER DATE: 03/15/2010
Date	REVISIONS

PURITAN DISCHARGE

PROPOSED
FeAIMn BED

PORTAGE TOWNSHIP
CAMBRIA COUNTY
PENNSYLVANIA

TROUT RUN WATERSHED
ASSOCIATION, CAMBRIA COUNTY
CONSERVATION DISTRICT, PA
DEPARTMENT OF
ENVIRONMENTAL PROTECTION

EXISTING PLAN

PROJECT NO.	C07012
DATE	2-23-2010
SCALE	1"=20'
SHEET NO.	2.00

G:\Projects\2010\07012_Puritan Discharge\DWG\07012_Puritan Discharge.dwg 03/15/2010 10:08:28 AM BY: JMM

Designer	NRC
Draftsman	JML
Proj Manager	TNS
Surveyor	N/A
Perimeter CL	
Book	Pg
Drawn	C
Acad	07/12 Puritan Discharge

03/02/2011	PER INTERNAL REVIEW
09/21/2010	PER RFP COMMENT LETTER
03/15/2010	PER RFP COMMENT LETTER
02/10/2010	PER RFP COMMENT LETTER
Date	Description
	REVISIONS

PURITAN DISCHARGE

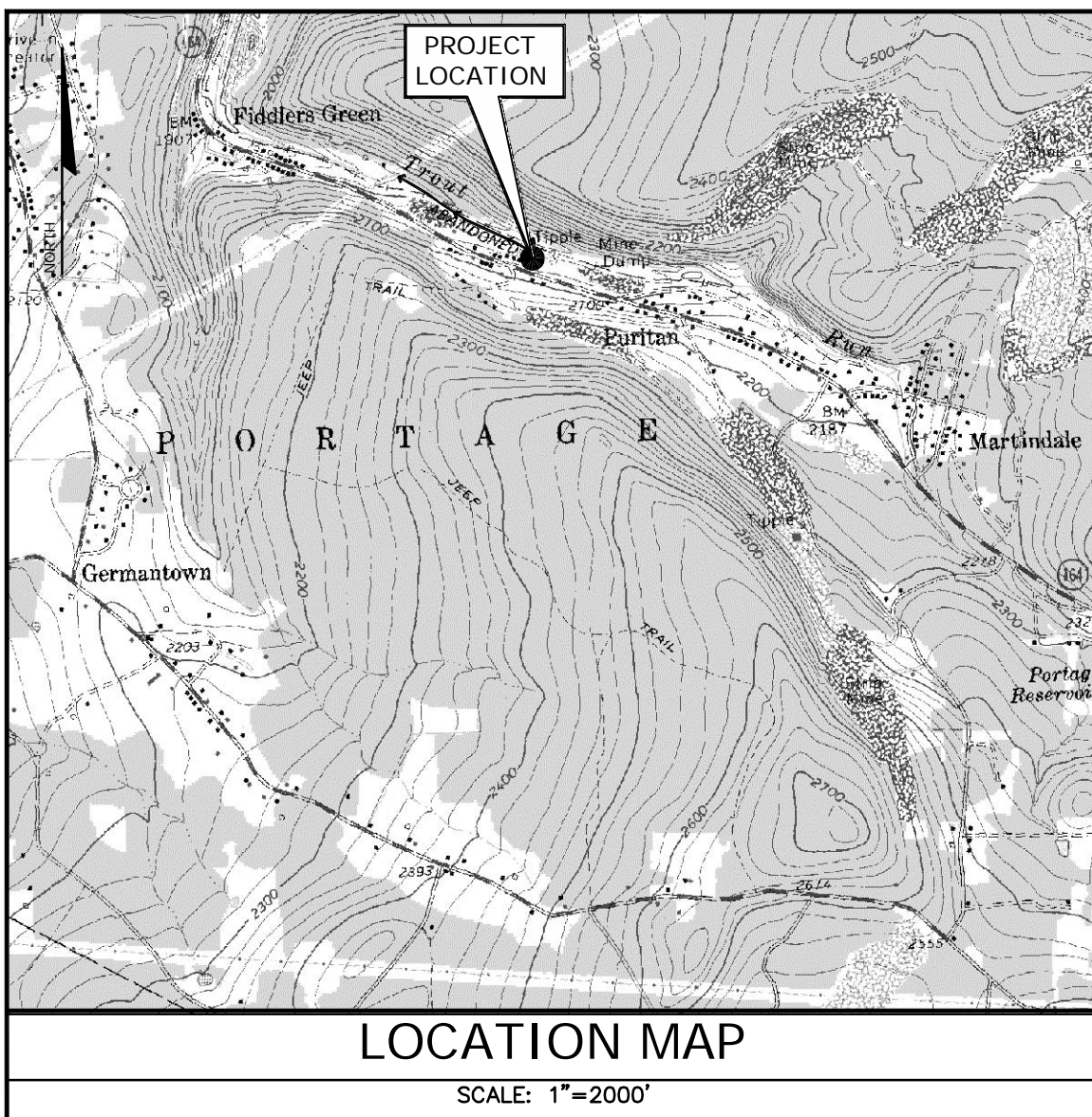
PROPOSED FeAIMn BED

PORTAGE TOWNSHIP
CAMBRIA COUNTY
PENNSYLVANIA

TROUT RUN WATERSHED
ASSOCIATION, CAMBRIA COUNTY
CONSERVATION DISTRICT, PA
DEPARTMENT OF
ENVIRONMENTAL PROTECTION

EROSION AND SEDIMENTATION CONTROL PLAN

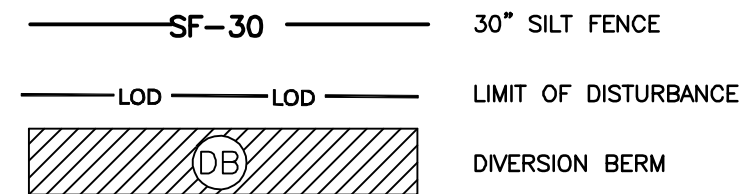
PROJECT NO.	C07012
DATE	2-23-2010
SCALE	1"=20'
SHEET NO.	4.00



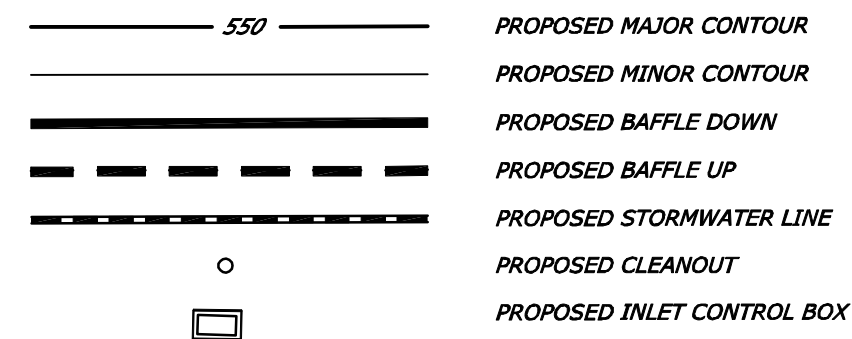
SITE SOIL: - Du - DUMPS, MINE.
At - ATKINS SILT LOAM

SOIL LIMITATIONS:
DEPTH TO LIMITING LAYER - EXCAVATION IS LIMITED TO DEPTHS NECESSARY FOR INSTALLATION OF IMPROVEMENTS.
SEEPAGE - ALL EMBANKMENTS WILL BE INSTALLED IN LIFTS AND PROPERTY COMPACTED.
EROSION HAZARD - TEMPORARY AND PERMANENT SEEDING AND MULCHING WILL BE USED TO PREVENT SOIL EROSION.
SLOPE - SLOPES WILL BE AVOIDED DURING CONSTRUCTION.
RECEIVING SURFACE WATER: TROUT RUN, CH. 93 CWF

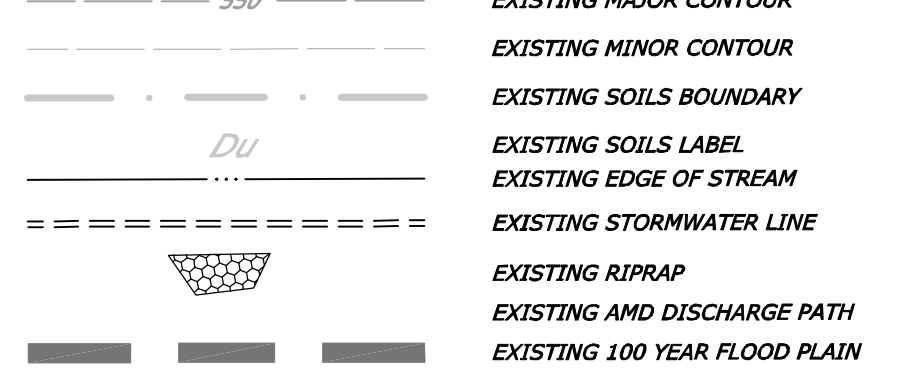
EROSION CONTROL LEGEND



PROPOSED FEATURES LEGEND

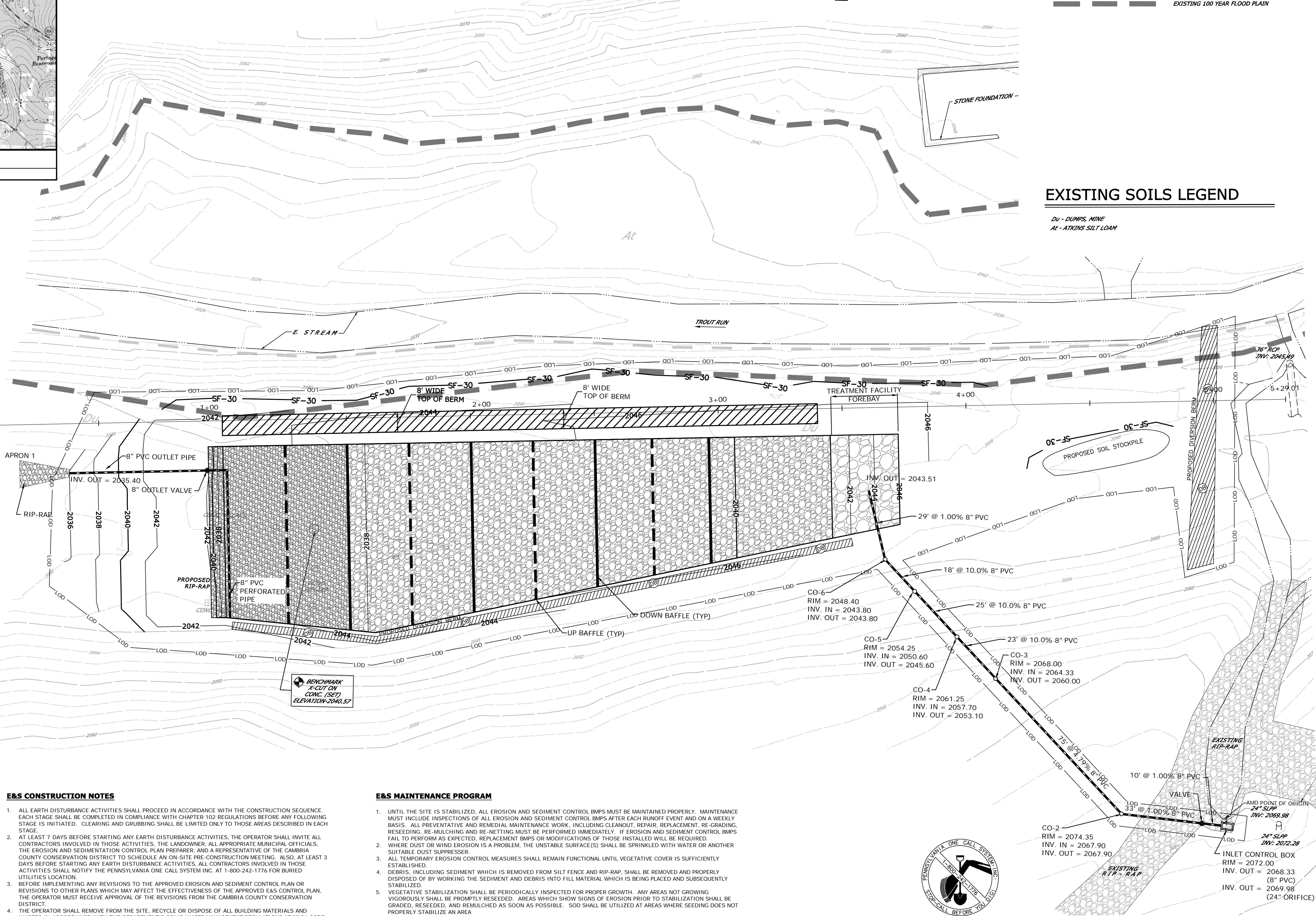


EXISTING FEATURES LEGEND



EXISTING SOILS LEGEND

Du - DUMPS, MINE
At - ATKINS SILT LOAM



DEMOLITION & EXCESS MATERIAL NOTES

- ALL BUILDING MATERIALS AND WASTES MUST BE REMOVED FROM THE SITE AND RECYCLED OR DISPOSED OF IN ACCORDANCE WITH THE DEPARTMENT'S SOLID WASTE MANAGEMENT REGULATIONS AT 25 PA. CODE 260.1 ET SEQ., 271.1., AND 287.1 ET SEQ. NO BUILDING MATERIALS OR WASTES OR UNUSED BUILDING MATERIALS SHALL BE BURNED, BURIED, DUMPED, OR DISCHARGED AT THE SITE.
- THE CONTRACTOR WILL BE RESPONSIBLE FOR THE REMOVAL OF ANY EXCESS MATERIAL AND MAKE SURE SITE(S) RECEIVING THE EXCESS HAS AN APPROVED EROSION AND SEDIMENT CONTROL PLAN THAT MEETS THE CONDITIONS OF CHAPTER 102 AND/OR OTHER STATE OR FEDERAL REGULATIONS.

CLEAN FILL AND ENVIRONMENTAL DUE DILIGENCE

- IT IS THE CONTRACTORS RESPONSIBILITY TO PERFORM ENVIRONMENTAL DUE DILIGENCE AND ENSURE THAT ALL FILL MATERIAL MEETS THE DEFINITION OF THE PA DEP DEFINITION OF "CLEAN FILL".
- CLEAN FILL IS DEFINED AS: UNCONTAMINATED, NON-WATER SOLUBLE, NON-DECOMPOSABLE, INERT, SOLID MATERIAL. THE TERM INCLUDES SOIL, ROCK, STONE, DREGGED MATERIAL, USED ASPHALT, AND BRICK, BLOCK OR CONCRETE FROM CONSTRUCTION AND DEMOLITION ACTIVITIES THAT IS SEPARATE FROM OTHER WASTE AND IS RECOGNIZABLE AS SUCH. THE TERM DOES NOT INCLUDE MATERIALS PLACED IN OR ON THE WATERS OF THE COMMONWEALTH UNLESS OTHERWISE AUTHORIZED. (THE TERM "USED ASPHALT" DOES NOT INCLUDE MILLED ASPHALT OR ASPHALT THAT HAS BEEN PROCESSED FOR RE-USE.)
- ANY PLACEMENT OF CLEAN FILL THAT HAS BEEN AFFECTED BY A SPILL OR RELEASE OF A REGULATED SUBSTANCE MUST USE FORM FP-001 TO CERTIFY THE ORIGIN OF THE FILL MATERIAL AND THE RESULTS OF THE ANALYTICAL TESTING TO QUALIFY THE MATERIAL AS CLEAN FILL. FORM FP-001 MUST BE RETAINED BY THE OWNER OF THE PROPERTY RECEIVING THE FILL.
- ENVIRONMENTAL DUE DILIGENCE MUST BE PERFORMED TO DETERMINE IF THE FILL MATERIALS ASSOCIATED WITH THE PROJECT QUALIFY AS CLEAN FILL. ENVIRONMENTAL DUE DILIGENCE IS DEFINED AS: INVESTIGATIVE TECHNIQUES, INCLUDING, BUT NOT LIMITED TO: VISUAL PROPERTY INSPECTIONS, ELECTRONIC DATA BASE SEARCHES, REVIEW OF PROPERTY OWNERSHIP, REVIEW OF PROPERTY USE HISTORY, SANBORN MAPS, ENVIRONMENTAL QUESTIONNAIRES, TRANSACTION SCREENS, ANALYTICAL TESTING, ENVIRONMENTAL ASSESSMENTS OR AUDITS, ANALYTICAL TESTING IS NOT A REQUIRED PART OF DUE DILIGENCE UNLESS VISUAL INSPECTION AND/OR REVIEW OF THE PAST LAND USE OF THE PROPERTY INDICATES THAT THE FILL MAY HAVE BEEN SUBJECT TO A SPILL OR RELEASE OF A REGULATED SUBSTANCE. IF THE FILL MAY HAVE BEEN AFFECTED BY A SPILL OR RELEASE OF A REGULATED SUBSTANCE, IT MUST BE TESTED TO DETERMINE IF IT QUALIFIES AS CLEAN FILL. TESTING SHOULD BE PERFORMED IN ACCORDANCE WITH APPENDIX A OF THE DEPARTMENT'S POLICY "MANAGEMENT OF CLEAN FILL."

RECYCLING & DISPOSAL OF MATERIALS

- WASTES GENERATED DURING THE CONSTRUCTION OF THIS PROJECT SHALL BE RECYCLED IF AT ALL POSSIBLE. ANY MATERIALS THAT CANNOT BE RECYCLED OR REUSED SHALL BE DISPOSED OF AT A NPDES PERMITTED SITE. ALL BUILDING MATERIALS AND WASTES MUST BE REMOVED FROM THE SITE AND RECYCLED OR DISPOSED OF IN ACCORDANCE WITH THE DEPARTMENT'S SOLID WASTE MANAGEMENT REGULATIONS AT 25 PA. CODE 260.1 ET SEQ., 271.1., AND 287.1 ET SEQ. NO BUILDING MATERIALS OR WASTES OR UNUSED BUILDING MATERIALS SHALL BE BURNED, BURIED, DUMPED, OR DISCHARGED AT THE SITE. IF SOIL AND/OR OTHER AREAS ARE REQUIRED, EROSION AND SEDIMENTATION CONTROLS SHALL BE IMPLEMENTED AT THESE AREAS.

E&S CONSTRUCTION NOTES

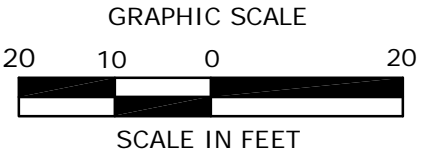
- ALL EARTH DISTURBANCE ACTIVITIES SHALL PROCEED IN ACCORDANCE WITH THE CONSTRUCTION SEQUENCE. EACH STAGE SHALL BE COMPLETED IN COMPLIANCE WITH CHAPTER 102 REGULATIONS BEFORE ANY FOLLOWING STAGE IS INITIATED. CLEARING AND GRUBBING SHALL BE LIMITED TO THOSE AREAS DESCRIBED IN EACH STAGE.
- AT LEAST 7 DAYS BEFORE STARTING ANY EARTH DISTURBANCE ACTIVITIES, THE OPERATOR SHALL INVITE ALL CONTRACTORS INVOLVED IN THOSE ACTIVITIES, THE LANDOWNER, ALL APPROPRIATE MUNICIPAL OFFICIALS, THE EROSION AND SEDIMENTATION CONTROL PLAN PREPARER, AND A REPRESENTATIVE OF THE CAMBRIA COUNTY CONSERVATION DISTRICT TO SCHEDULE AN ON-SITE PRE-CONSTRUCTION MEETING. ALSO, AT LEAST 3 DAYS BEFORE STARTING ANY EARTH DISTURBANCE ACTIVITIES, ALL CONTRACTORS INVOLVED IN THOSE ACTIVITIES SHALL NOTIFY THE PENNSYLVANIA ONE CALL SYSTEM INC. AT 1-800-242-1776 FOR BURIED UTILITIES LOCATION.
- BEFORE IMPLEMENTING ANY REVISIONS TO THE APPROVED EROSION AND SEDIMENT CONTROL PLAN OR REVISIONS TO OTHER PLANS WHICH MAY AFFECT THE EFFECTIVENESS OF THE APPROVED E&S CONTROL PLAN, THE OPERATOR MUST RECEIVE APPROVAL OF THE REVISIONS FROM THE CAMBRIA COUNTY CONSERVATION DISTRICT.
- THE OPERATOR SHALL REMOVE FROM THE SITE, RECYCLE OR DISPOSE OF ALL BUILDING MATERIALS AND WASTES IN ACCORDANCE WITH THE DEPARTMENT'S SOLID WASTE MANAGEMENT REGULATIONS AT 25 PA CODE 260.1 ET SEQ., 271.1 E. SEQ. AND 287.1 ET SEQ.
- BEFORE DISPOSING OF SOIL OR RECEIVING BORROW FOR THE SITE, THE OPERATOR MUST ASSURE THAT EACH SPOIL OR BORROW AREA HAS AN EROSION AND SEDIMENT CONTROL PLAN APPROVED BY THE CAMBRIA COUNTY CONSERVATION DISTRICT, AND WHICH IS BEING IMPLEMENTED AND MAINTAINED ACCORDING TO CHAPTER 102 REGULATIONS. THE OPERATOR SHALL ALSO NOTIFY THE CAMBRIA COUNTY CONSERVATION DISTRICT IN WRITING OF ALL RECEIVING SPOIL AND BORROW AREAS WHEN THEY HAVE BEEN IDENTIFIED

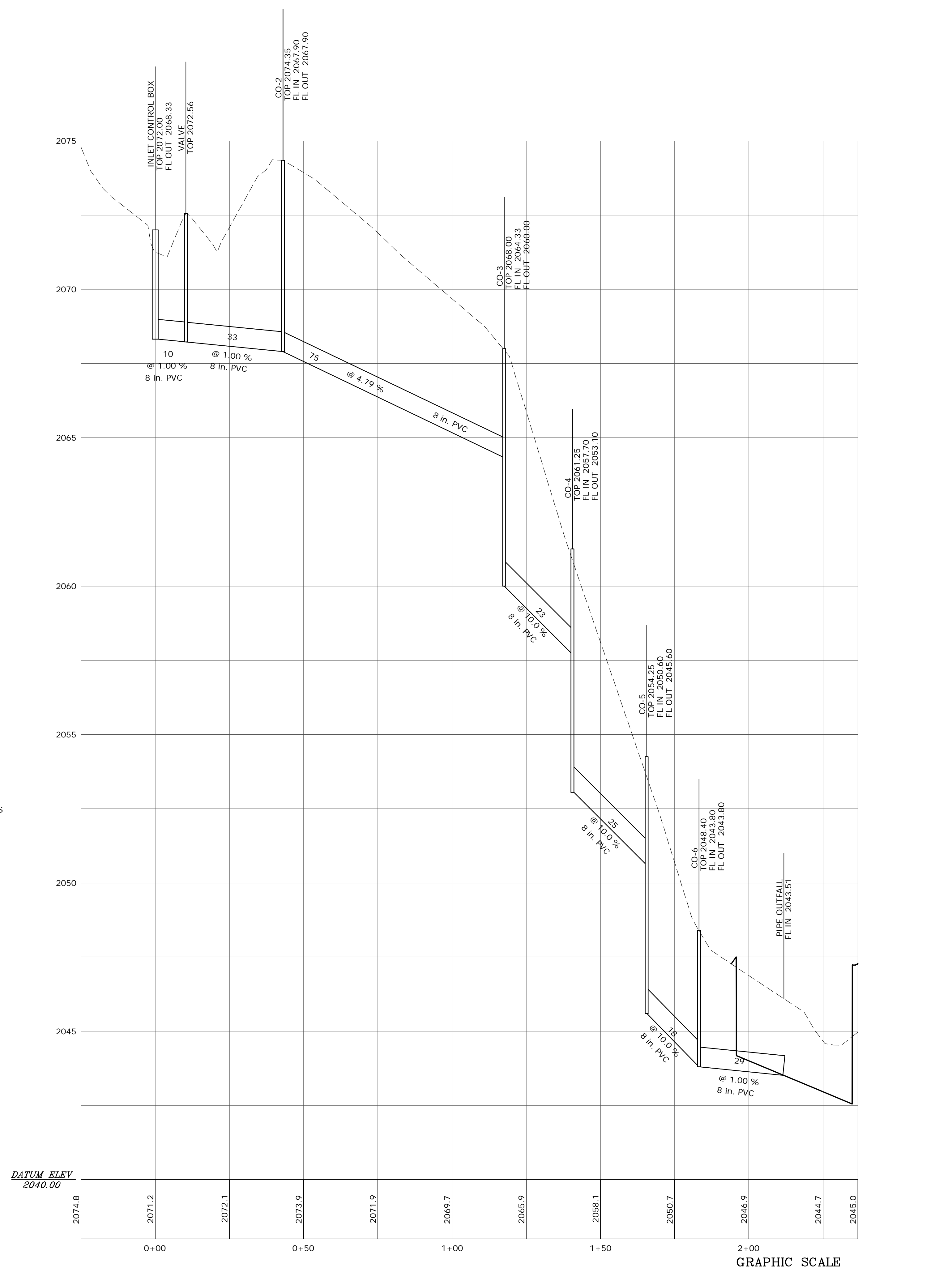
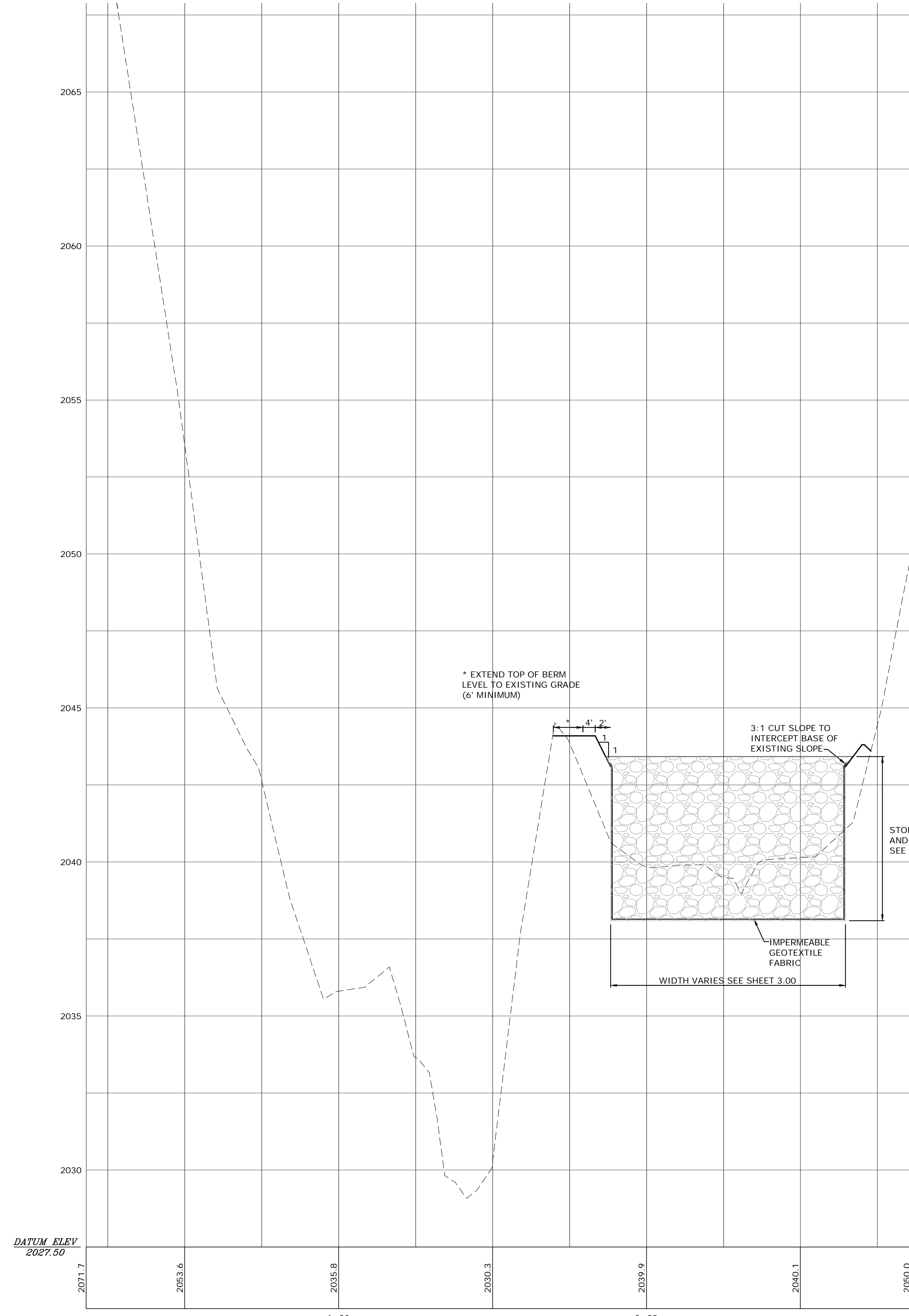
E&S MAINTENANCE PROGRAM

- UNTIL THE SITE IS STABILIZED, ALL EROSION AND SEDIMENT CONTROL BMPs MUST BE MAINTAINED PROPERLY. MAINTENANCE MUST INCLUDE INSPECTIONS OF ALL EROSION AND SEDIMENT CONTROL BMPs AFTER EACH RUNOFF EVENT AND ON A WEEKLY BASIS. ALL PREVENTATIVE AND REMEDIAL MAINTENANCE WORK, INCLUDING CLEANOUT, REPAIR, REPLACEMENT, RE-GRADING, RESEEDING, RE-MULCHING AND RE-NETTING MUST BE PERFORMED IMMEDIATELY. IF EROSION AND SEDIMENT CONTROL BMPs FAIL TO PERFORM AS EXPECTED, REPLACEMENT BMPs OR MODIFICATIONS OF THOSE INSTALLED WILL BE REQUIRED.
- WHERE DUST OR WIND EROSION IS A PROBLEM, THE UNSTABLE SURFACE(S) SHALL BE SPRINKLED WITH WATER OR ANOTHER SUITABLE DUST SUPPRESSER.
- ALL TEMPORARY EROSION CONTROL MEASURES SHALL REMAIN FUNCTIONAL UNTIL VEGETATIVE COVER IS SUFFICIENTLY ESTABLISHED.
- DEBRIS, INCLUDING SEDIMENT WHICH IS REMOVED FROM SILT FENCE AND RIP-RAP, SHALL BE REMOVED AND PROPERLY DISPOSED OF BY WORKING THE SEDIMENT AND DEBRIS INTO FILL MATERIAL WHICH IS BEING PLACED AND SUBSEQUENTLY STABILIZED.
- VEGETATIVE STABILIZATION SHALL BE PERIODICALLY INSPECTED FOR PROPER GROWTH. ANY AREAS NOT GROWING VIGOROUSLY SHALL BE PROMPTLY RESEEDED. AREAS WHICH SHOW SIGNS OF EROSION PRIOR TO STABILIZATION SHALL BE GRADED, RESEEDED, AND REMULCHED AS SOON AS POSSIBLE. SOD SHALL BE UTILIZED AT AREAS WHERE SEEDING DOES NOT PROPERLY STABILIZE AN AREA.
- ANY SEDIMENT REMOVED FROM BMPs DURING CONSTRUCTION WILL BE RETURNED TO UPLAND AREAS ON SITE AND INCORPORATED INTO THE SITE.
- THE PERMITTEE AND CO-PERMITTEE MUST ENSURE THAT VISUAL SITE INSPECTIONS ARE CONDUCTED WEEKLY, AND AFTER EACH MEASURABLE PRECIPITATION EVENT BY QUALIFIED PERSONNEL, TRAINED AND EXPERIENCED IN EROSION AND SEDIMENT CONTROL, TO ASCERTAIN THAT THE EROSION AND SEDIMENT CONTROL (E & S) BMPs ARE OPERATIONAL AND EFFECTIVE IN PREVENTING POLLUTION TO THE WATERS OF THE COMMONWEALTH. A WRITTEN REPORT OF EACH INSPECTION SHALL BE KEPT, AND INCLUDE:
A. A SUMMARY OF THE SITE CONDITIONS, E&S BMPs, AND COMPLIANCE.
B. THE DATE, TIME AND THE NAME OF THE PERSON CONDUCTING THE INSPECTION.

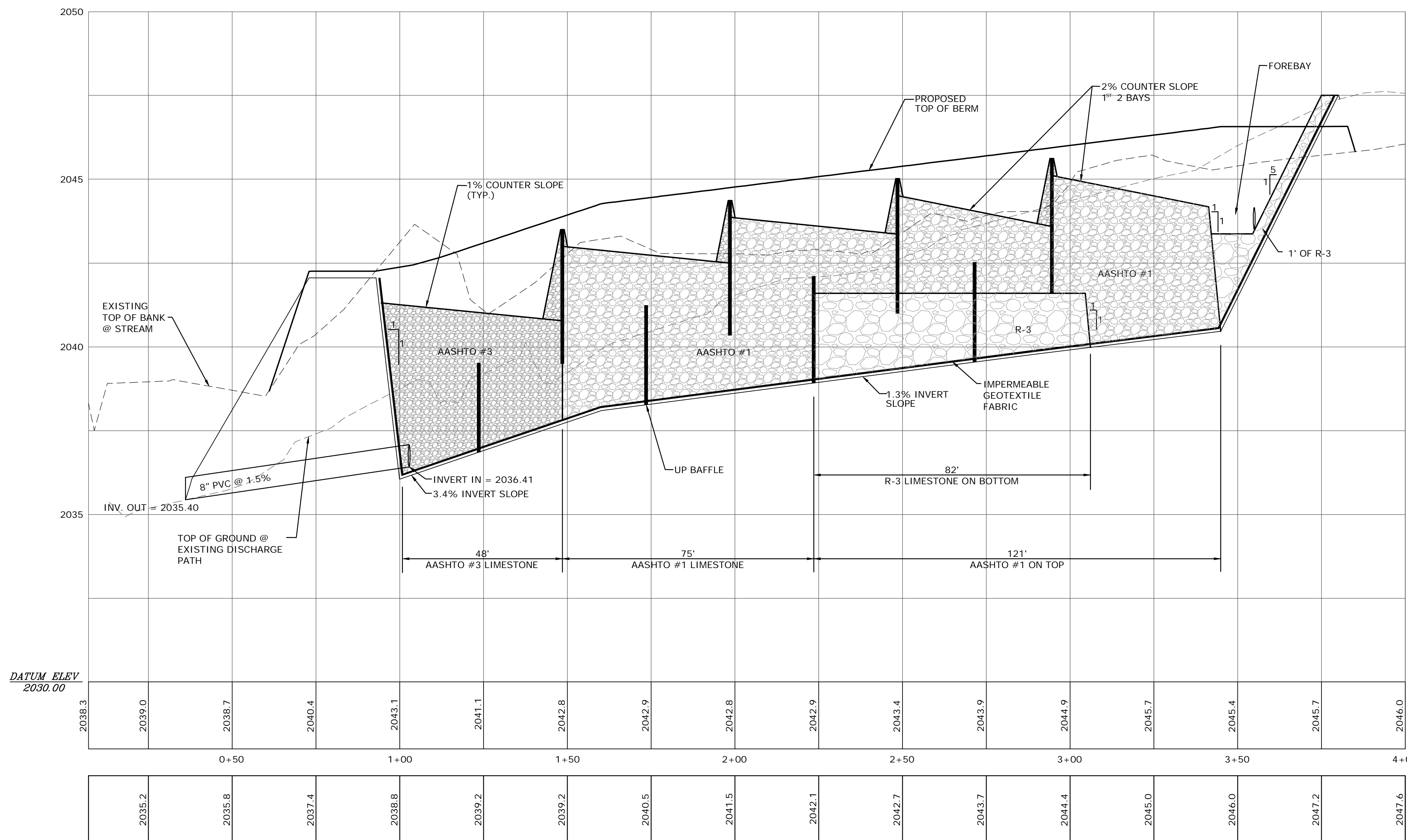


PENNSYLVANIA ACT 187 (1996) AS AMENDED REQUIRES THREE (3) WORKING DAYS NOTICE FOR CONSTRUCTION PHASE AND TEN (10) WORKING DAYS IN DESIGN STAGE.
PA ONE-CALL SERIAL NO. 2177572-000 HAS BEEN ASSIGNED TO THIS PROJECT.



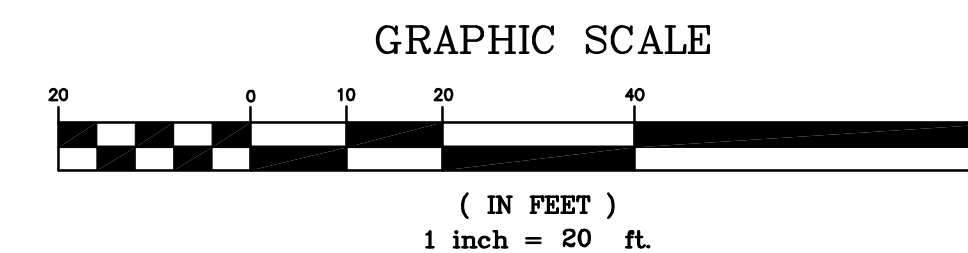


G:\a_projects\LD0 Projects\2007\07012_Puritan Discharge\dwg\2071.7.dwg G:\a_projects\LD0 Projects\2007\07012_Puritan Discharge\dwg\2072.1.dwg G:\a_projects\LD0 Projects\2007\07012_Puritan Discharge\dwg\2073.9.dwg G:\a_projects\LD0 Projects\2007\07012_Puritan Discharge\dwg\2071.9.dwg G:\a_projects\LD0 Projects\2007\07012_Puritan Discharge\dwg\2069.7.dwg G:\a_projects\LD0 Projects\2007\07012_Puritan Discharge\dwg\2065.9.dwg G:\a_projects\LD0 Projects\2007\07012_Puritan Discharge\dwg\2058.1.dwg G:\a_projects\LD0 Projects\2007\07012_Puritan Discharge\dwg\2050.7.dwg G:\a_projects\LD0 Projects\2007\07012_Puritan Discharge\dwg\2046.9.dwg G:\a_projects\LD0 Projects\2007\07012_Puritan Discharge\dwg\2044.7.dwg G:\a_projects\LD0 Projects\2007\07012_Puritan Discharge\dwg\2045.0.dwg



BASELINE PROFILE

SCALE:
HORIZ: 1" = 20'
VERT: 1" = 2'



Designer: NRC
Draftsman: JMM
Proj Manager: TNS
Surveyor: N/A
Perimeter Cl.:
Book: Pg.
Drive: C: View/Shop:
Acad: 07012 Puritan Discharge

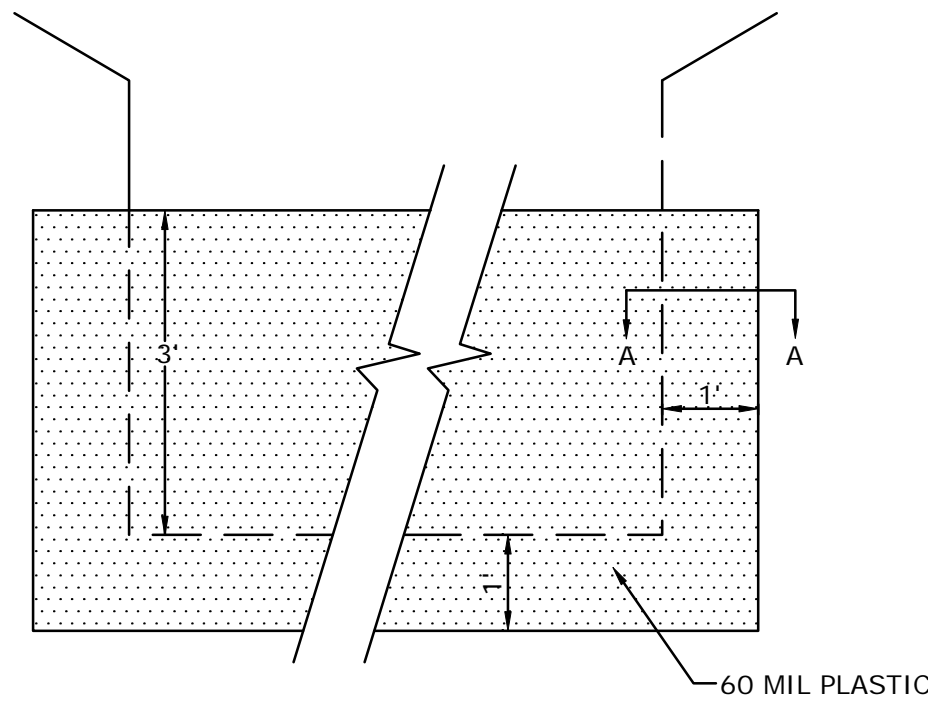
Date	Description
03/02/2011	PER INTERNAL REVIEW
09/21/2010	PER DEP COMMENT LETTER
03/15/2010	PER DEP COMMENT LETTER DATE: 01/12/2010

PURITAN DISCHARGE
PROPOSED FeAlMn BED
PORTAGE TOWNSHIP
CAMBRIA COUNTY
PENNSYLVANIA
TROUT RUN WATERSHED
ASSOCIATION, CAMBRIA COUNTY
CONSERVATION DISTRICT, PA
DEPARTMENT OF
ENVIRONMENTAL PROTECTION

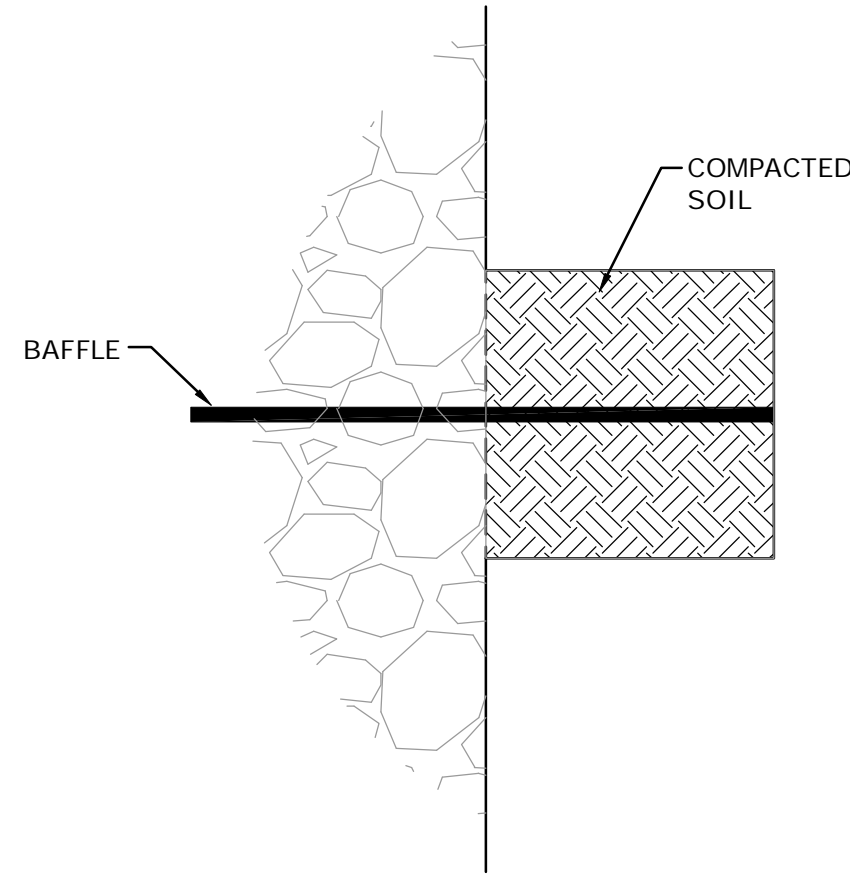
PROFILES

PROJECT NO.
C07012
DATE
2-23-2010
SCALE SHEET NO.
1"=20' **5.00**

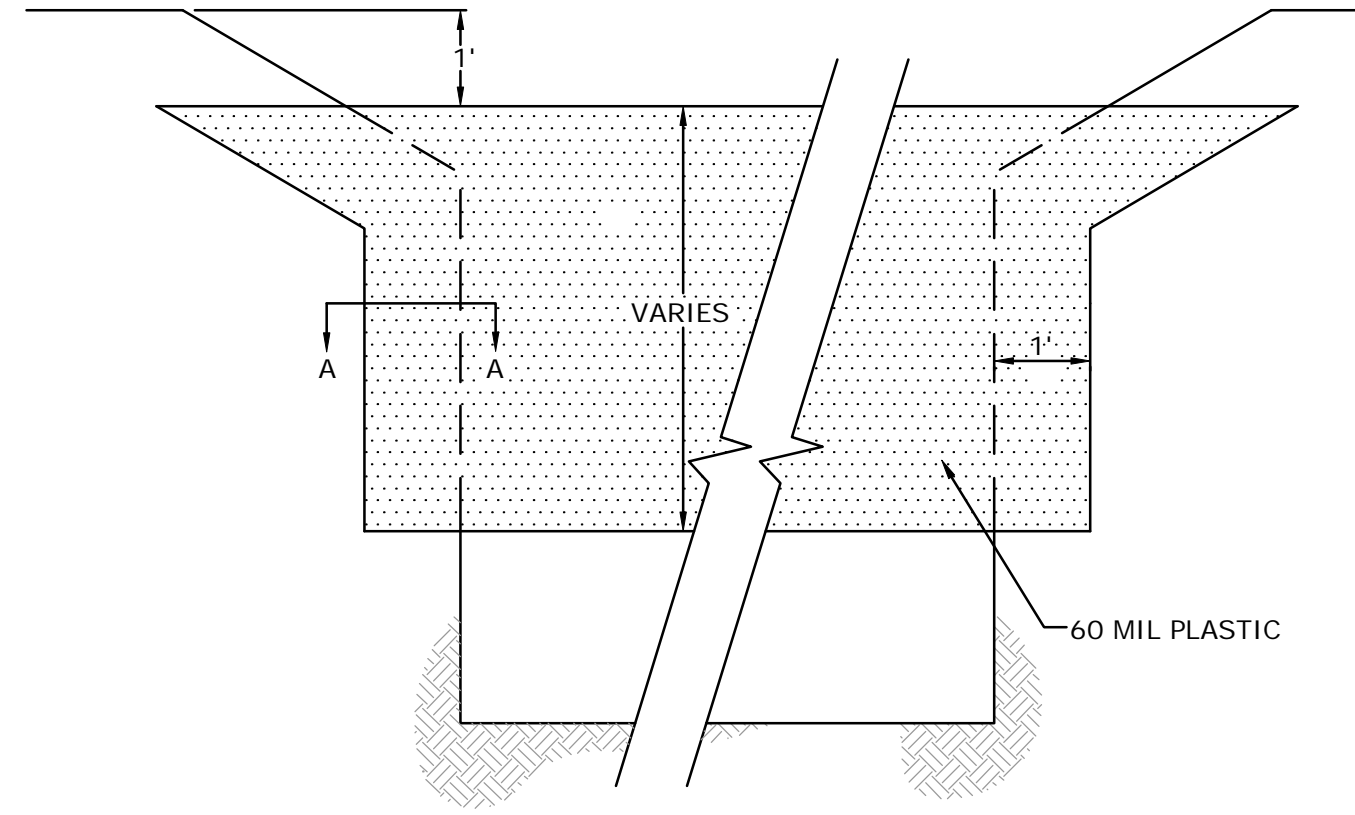
G:\a_projects\2010\07012_Puritan_Discharge\dwg\Baseline.dwg 08/20/11 11:10:06 AM BPT
 G:\a_projects\2010\07012_Puritan_Discharge\dwg\Baseline.dwg 08/20/11 11:10:06 AM BPT
 G:\a_projects\2010\07012_Puritan_Discharge\dwg\Baseline.dwg 08/20/11 11:10:06 AM BPT
 G:\a_projects\2010\07012_Puritan_Discharge\dwg\Baseline.dwg 08/20/11 11:10:06 AM BPT



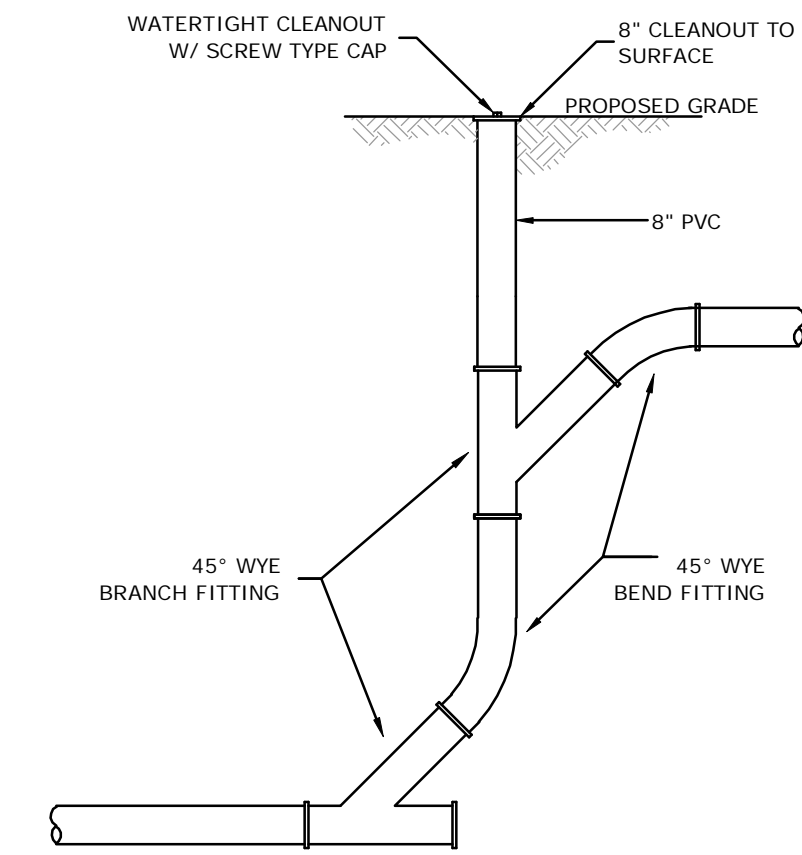
UP BAFFEL
N.T.S.



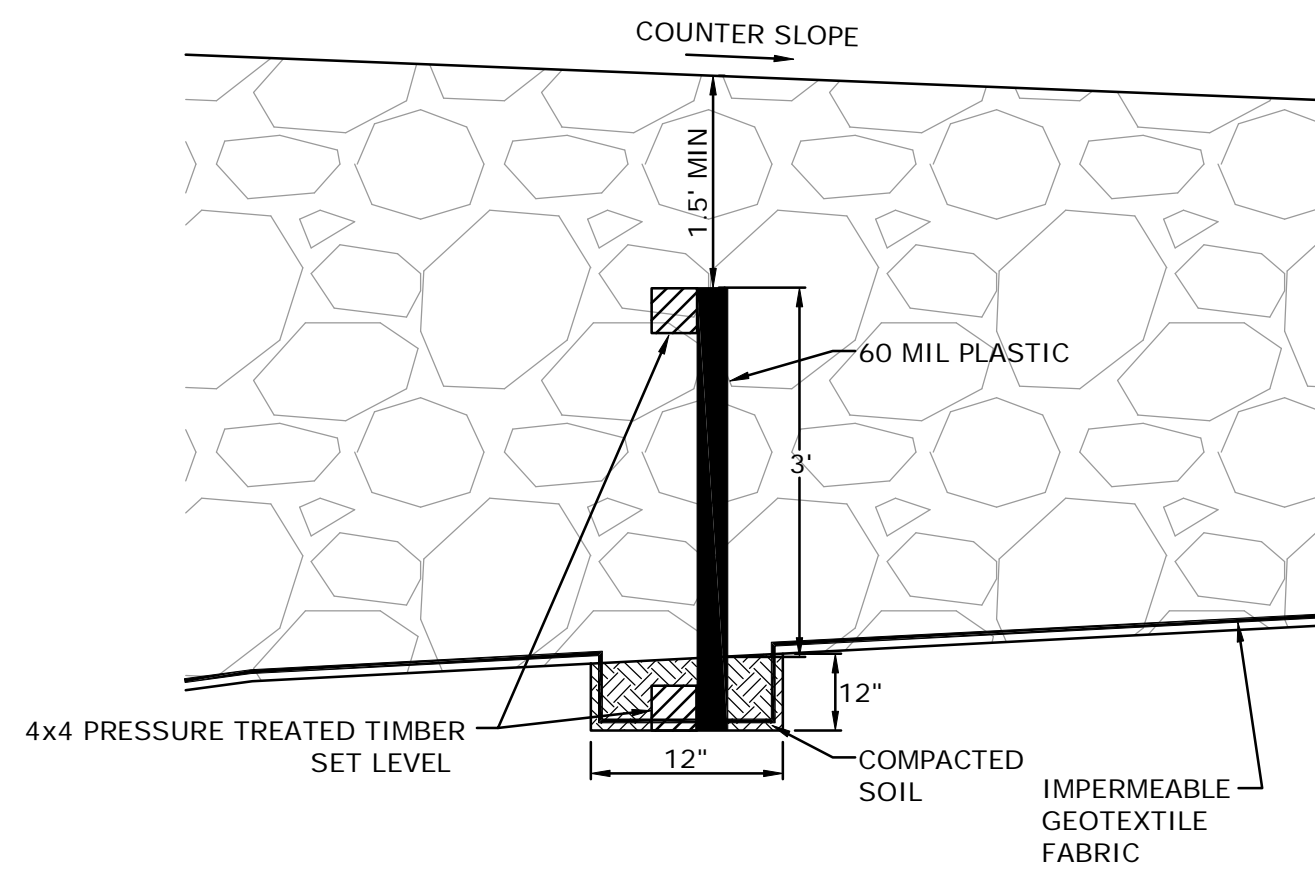
**SECTION A-A
BAFFLE SIDE SEALING**
N.T.S.



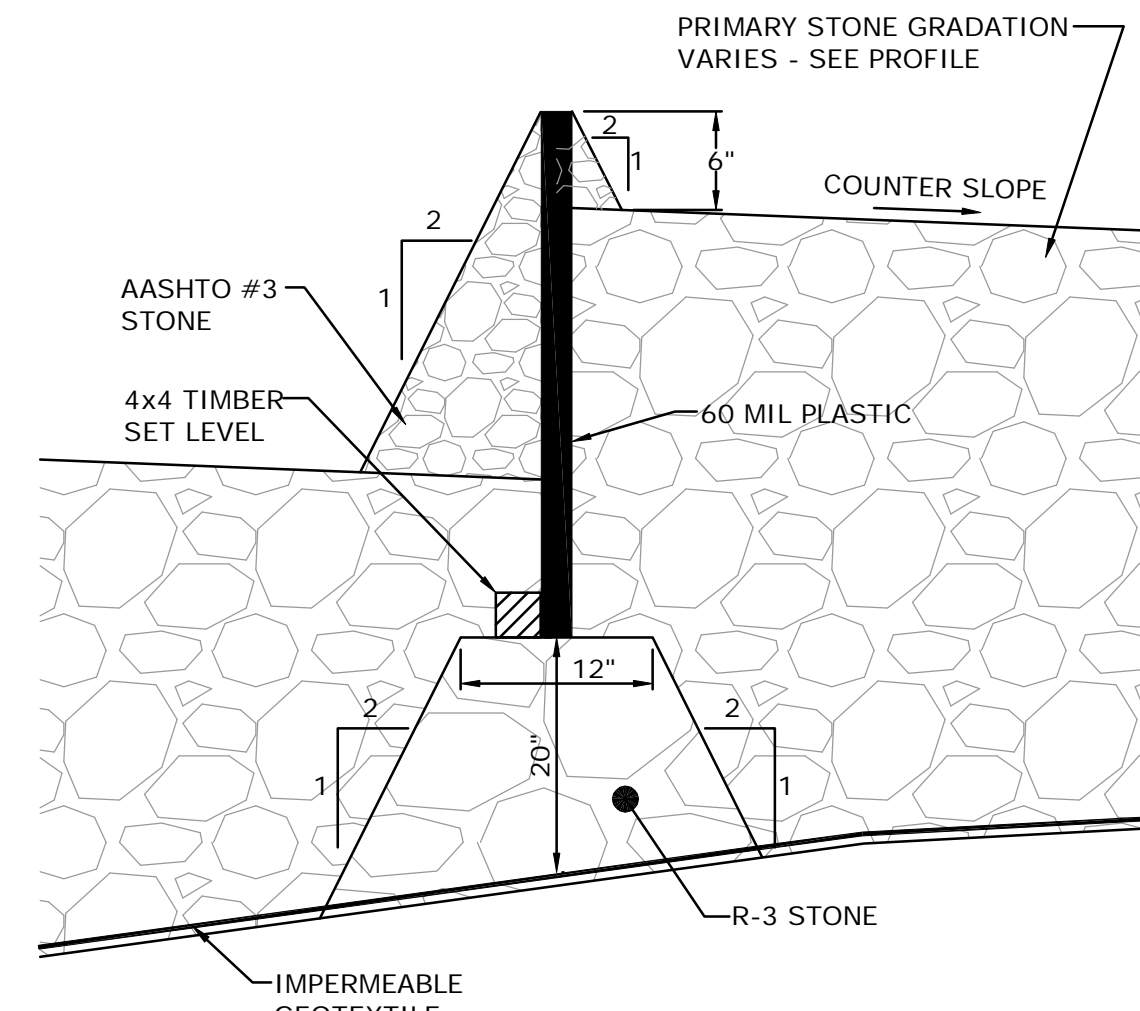
DOWN BAFFEL
N.T.S.



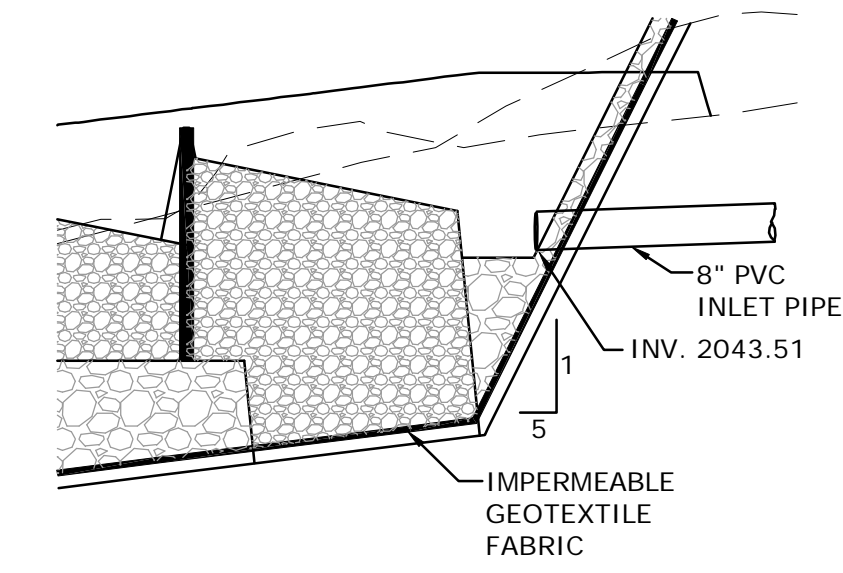
STORM SEWER CLEANOUT
N.T.S.



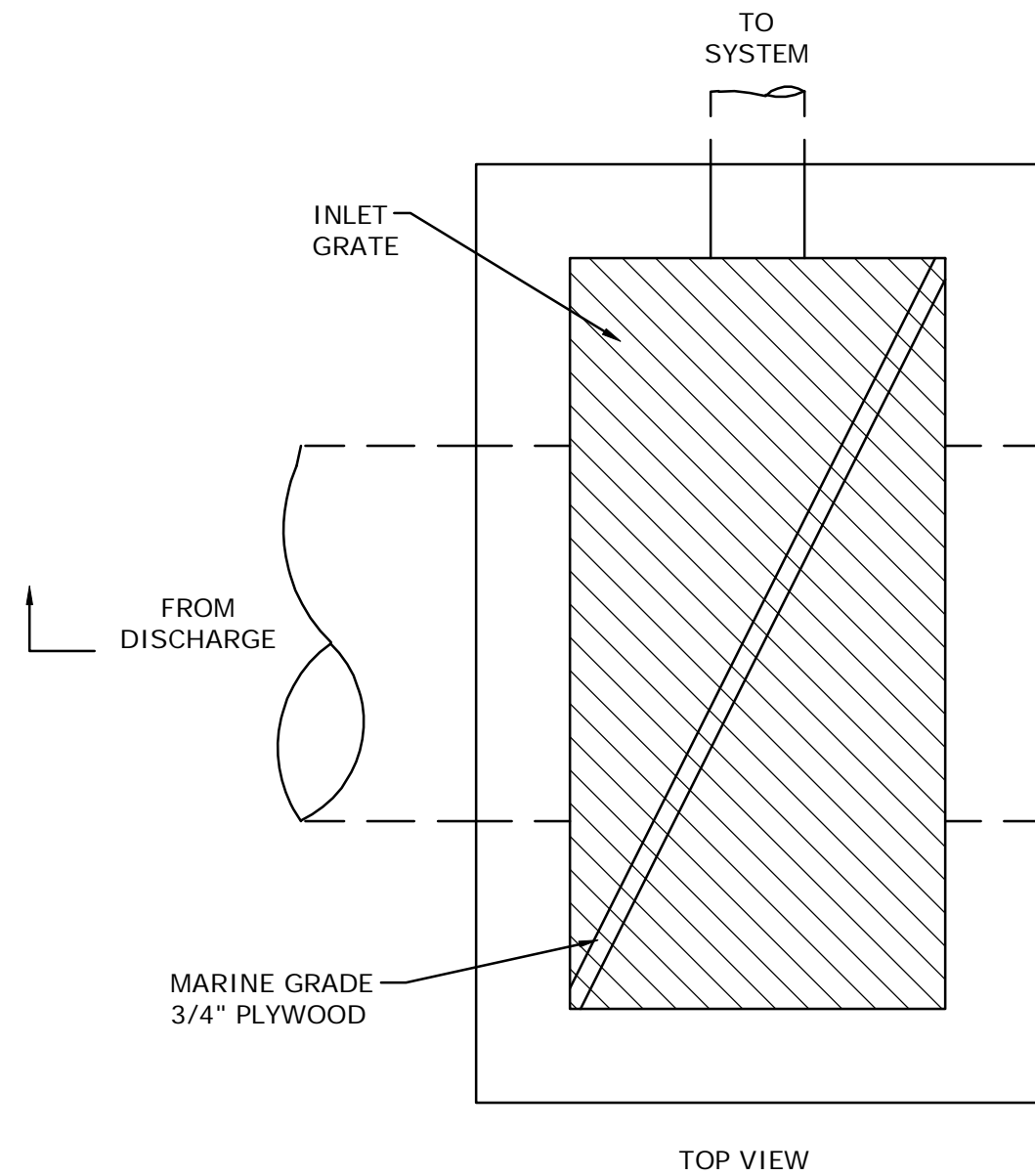
UP BAFFEL
N.T.S.



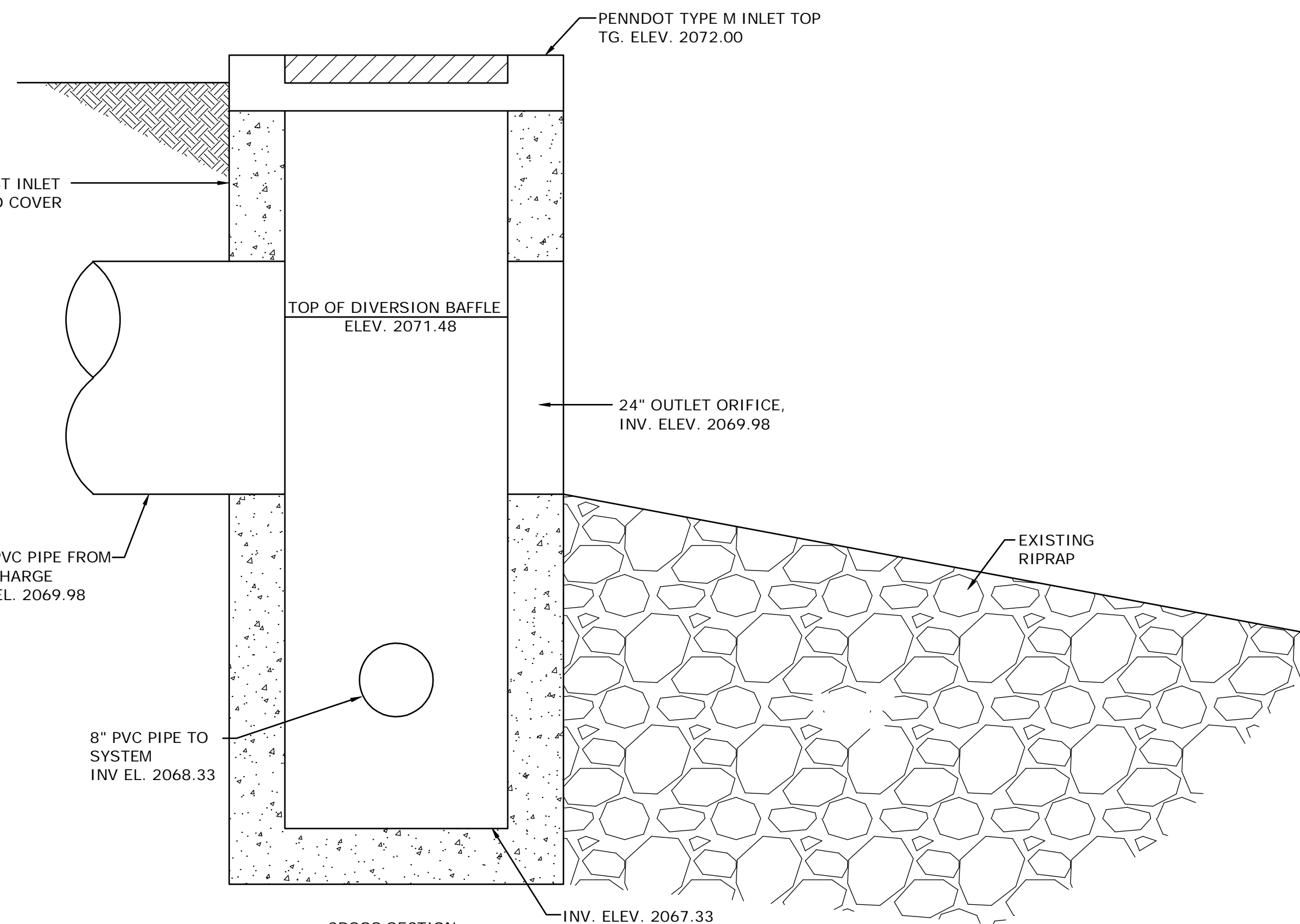
DOWN BAFFEL
N.T.S.



BED INLET
N.T.S.



TOP VIEW



CROSS SECTION

PRECAST INLET CONTROL BOX
N.T.S.

Designer	NRC
Draftsman	JMM
Proj Manager	TAS
Surveyor	N/A
Perimeter Cl.	
Book	Pg
Drawn	View/Shop
Acad	07012 Puritan Discharge

03/02/2011	PER INTERNAL REVIEW
09/21/2010	PER DEP COMMENT LETTER
03/15/2010	PER DEP COMMENT LETTER DATE: 03/15/2010
Date	Description

PURITAN DISCHARGE
PROPOSED FeAlMn BED
PORTAGE TOWNSHIP
CAMBRIA COUNTY
PENNSYLVANIA
TROUT RUN WATERSHED
ASSOCIATION, CAMBRIA COUNTY
CONSERVATION DISTRICT, PA
DEPARTMENT OF
ENVIRONMENTAL PROTECTION

DETAILS

PROJECT NO.	C07012
DATE	2-23-2010
SCALE	NTS
SHEET NO.	6.00