

ABANDONED MINE DRAINAGE REMEDIATION PROJECT FOR THE REEVESDALE #2 DISCHARGE SCHUYLKILL HEADWATERS ASSOCIATION, INC. LOCATED IN

SCHUYLKILL TOWNSHIP, SCHUYLKILL COUNTY, PA

ACT 187 UNDERGROUND UTILITY PROTECTION ACT

RETTEW ASSOCIATES, INC. HEREBY STATES THAT, PURSUANT TO THE PROVISIONS OF ACT NO. 287 OF 1974, AS AMENDED BY ACT 187 OF 1996, OF THE PENNSYLVANIA LEGISLATURE, IT HAS PERFORMED THE FOLLOWING IN PREPARING THESE DRAWINGS REQUIRING EXCAVATION OR DEMOLITION WORK AT SITES WITHIN THE POLITICAL SUBDIVISION(S) SHOWN ON THE DRAWINGS:

- PURSUANT TO SECTION 4, CLAUSE (2) OF SAID ACT, RETTEW ASSOCIATES, INC. REQUESTED FROM EACH USER'S OFFICE DESIGNATED ON SUCH LIST PROVIDED BY THE ONE CALL SYSTEM NOTIFICATION, THE INFORMATION PRESCRIBED BY SECTION 2, CLAUSE (4) OF SAID ACT, NOT LESS THAN (10) NOR MORE THAN (90) WORKING DAYS BEFORE FINAL DESIGN IS TO BE COMPLETED.
- PURSUANT TO SECTION 4, CLAUSE (5) OF SAID ACT, RETTEW ASSOCIATES, INC. HAS MET THEIR OBLIGATIONS OF CLAUSE (2) BY CALLING THE ONE CALL SYSTEM SERVING THE LOCATION WHERE EXCAVATION IS TO BE PERFORMED.
- PURSUANT TO SECTION 4, CLAUSE (3) OF SAID ACT, RETTEW ASSOCIATES, INC. HAS SHOWN UPON THESE DRAWINGS THE POSITION AND TYPE OF EACH LINE, AS DERIVED PURSUANT TO THE REQUEST MADE AS REQUIRED BY CLAUSE (2), THE SERIAL NUMBER PROVIDED BY THE ONE CALL SYSTEM, THE TOLL-FREE ONE CALL SYSTEM PHONE NUMBER, AND THE NAME OF THE USER, THE USER'S DESIGNATED OFFICE ADDRESS AND PHONE NUMBER AS SHOWN ON THE LIST REFERRED TO IN SECTION 4, CLAUSE (5) OF SAID ACT.

AND RETTEW ASSOCIATES, INC. DOES NOT MAKE ANY REPRESENTATION, WARRANTY, ASSURANCE OR GUARANTEE THAT THE INFORMATION RECEIVED PURSUANT TO SAID REQUEST AND AS REFLECTED ON THESE DRAWINGS IS CORRECT OR ACCURATE, BUT RETTEW ASSOCIATES, INC. IS REFLECTING SAID INFORMATION ON THESE DRAWINGS ONLY DUE TO THE REQUIREMENTS OF THE SAID ACT NO. 187 OF DECEMBER 19, 1996.

ONE CALL SYSTEM SERIAL NO. NOTIFICATION BY RETTEW ASSOCIATES, INC. DATE: 05/12/05

ONE CALL SYSTEM SERIAL NUMBER: 1326635

PA 1
SYSTEM, INC.
1-800-242-1776

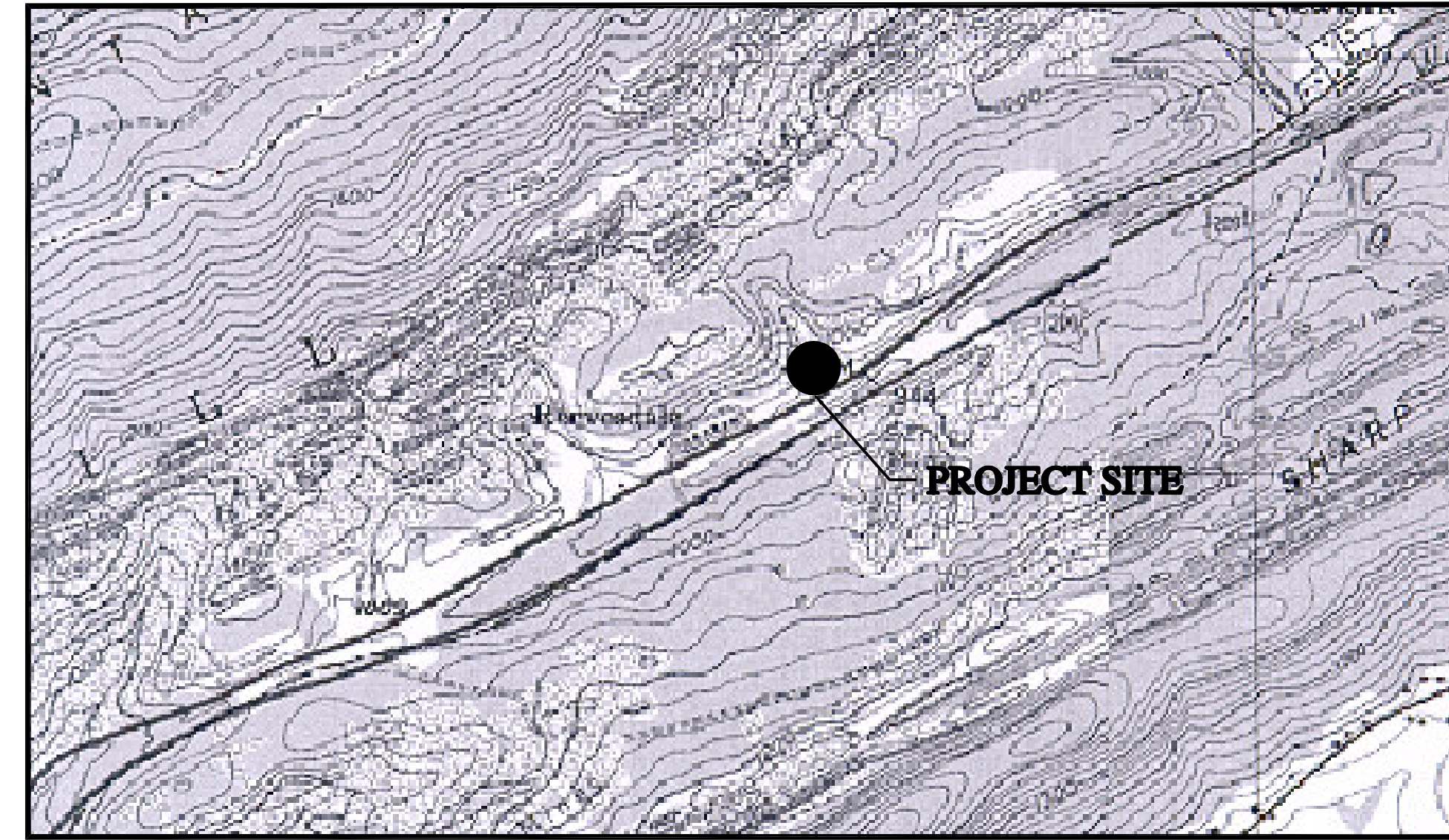
CALL BEFORE YOU DIG!
PENNSYLVANIA LAW REQUIRES
(3) WORKING DAYS NOTICE FOR
CONSTRUCTION PHASE AND (10) WORKING
DAYS IN DESIGN STAGE - STOP CALL

UTILITIES RESPONDED:

BLYTHE TOWNSHIP MUNICIPAL AUTHORITY 375 VALLEY STREET NEW PHILADELPHIA, PA 17959 CONTACT: MICHAEL E. BURDA	SUNOCO PIPELINE LP 525 FRITZTOWN ROAD SINKING SPRING, PA 19608 CONTACT: ONE CALL DEPARTMENT
FRONTIER COMMUNICATIONS OF LAKEWOOD INC 4 S APPLE ST BARNESVILLE, PA 18214 CONTACT: CHARLES HUBIAK	TAMAQUA AREA WATER AUTHORITY 320 E BROAD ST TAMAQUA, PA 18252 CONTACT: ROBERT JONES
PPL ELECTRIC UTILITIES CORPORATION 4810 LYCOMING MALL DRIVE MONTGOMERYVILLE, PA 17754 CONTACT: PAM SEITZER	VERIZON NORTH C/O CENTRAL LOCATING SERVICE 8606 ALLISONVILLE ROAD, SUITE 132 INDIANAPOLIS, IN 46250 CONTACT: CLS PERSONNEL
SCHUYLKILL VALLEY SEWER AUTHORITY C/O ALFRED BENSON & CO 400 ONE NORWEGIAN PLAZA P.O. BOX 1090 POTTSVILLE, PA 17901 CONTACT: JOSEPH MATALAVAGE	VERIZON PENNSYLVANIA INC 11TH FLOOR STRAWBERRY SQUARE HARRISBURG, PA 17101 CONTACT: FLORENCE WINSTEAD

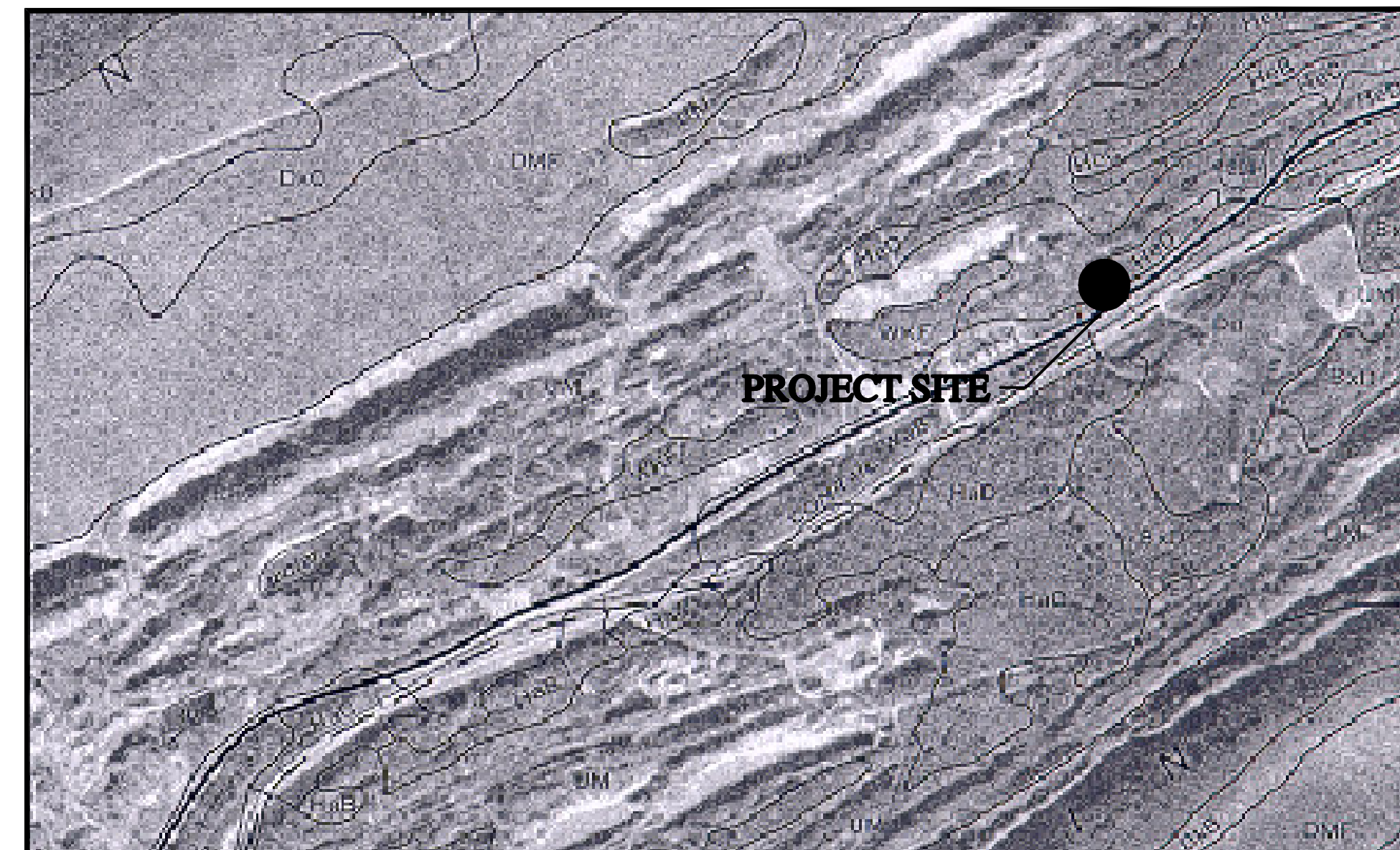
SHEET INDEX

SHT. 1	COVER
SHT. 2	EXISTING SITE PLAN
SHT. 3	GRADING PLAN
SHT. 4	PIPING PLAN
SHT. 5	PROPOSED SITE PLAN
SHT. 6	EROSION & SEDIMENT CONTROL PLAN - PHASE I
SHT. 7	EROSION & SEDIMENT CONTROL PLAN - PHASE II
SHT. 8	SITE DETAILS - EROSION CONTROL
SHT. 9	SITE DETAILS
SHT. 10	SITE DETAILS



LOCATION MAP

SCALE: 1"=1000'



SOILS MAP

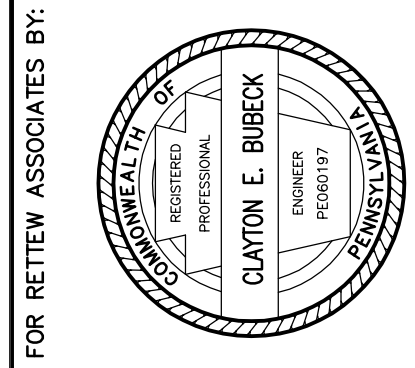
APPROXIMATE SCALE: 1"=1000'

GENERAL NOTES

- BENCHMARK- PLANTED RAIL LOCATED APPROXIMATELY 250' UPSTREAM OF OLD ROUTE 209 ROAD AND 7' EAST OF THE CENTERLINE OF THE STREAM, CAPPED IRON PIN (C.I.P.) ELEVATION: 958.91; DATUM: NAVD 83.
- ALL EXISTING UTILITIES HAVE BEEN SHOWN IN ACCORDANCE WITH THE BEST AVAILABLE INFORMATION.
- THE CONTRACTOR SHALL DETERMINE THE EXACT LOCATION OF ALL ABOVE GROUND AND BELOW GROUND UTILITIES AND STRUCTURES AND WILL BE RESPONSIBLE FOR THE PROTECTION OF THESE UTILITIES AND STRUCTURES AT ALL TIMES.
- THE CONTRACTOR SHALL TAKE ALL NECESSARY PRECAUTIONS TO PROTECT THE EXISTING UTILITIES AND MAINTAIN UNINTERRUPTED SERVICE AND ANY DAMAGE SHALL BE REPAIRED IMMEDIATELY AND COMPLETELY AT HIS EXPENSE.
- CONTRACTOR SHALL BE RESPONSIBLE FOR THE REPLACEMENT OF LANDSCAPE DAMAGED OR DESTROYED AS A RESULT OF HIS WORK.
- THE PLAN LOCATIONS AND DIMENSIONS SHALL BE STRICTLY ADHERED TO UNLESS OTHERWISE DIRECTED BY THE ENGINEER. PLAN CHANGES, SHOULD THEY BE REQUIRED, ARE SUBJECT TO MUNICIPAL AND COUNTY ORDINANCES.
- CONTRACTOR SHALL BE RESPONSIBLE FOR MAINTAINING A COPY OF ALL PERMITS RELATED TO THE CONSTRUCTION SHOWN ON THESE PLANS ON THE JOB SITE AT ALL TIMES.
- CONTRACTOR SHALL VERIFY ALL DIMENSIONS ON THE SITE PROJECT PRIOR TO THE START OF CONSTRUCTION.
- CONTRACTOR SHALL NOTIFY ALL UTILITIES REQUIRED PER ACT 187 FOR VERIFICATION AND LOCATION OF UTILITIES PRIOR TO CONSTRUCTION.
- THE CONTRACTOR SHALL BE RESPONSIBLE FOR ALL JOB SITE SAFETY, ALL TRAFFIC CONTROL, TRENCH BARRICADING, COVERING, SHEETING AND SHORING.
- ALL BERMS AND IMPOUNDMENTS SHALL BE CONSTRUCTED IN 6" LIFTS AND COMPACTED TO 95% PROCTOR DENSITY.
- THE CONTRACTOR SHALL BE RESPONSIBLE FOR COORDINATING ACCESS TO THE SITE WITH THE READING ANTHRACITE COMPANY.
- THE LIMESTONE AGGREGATE SHALL CONTAIN NOT LESS THAN NINETY PERCENT (90%) CALCIUM CARBONATE CONTENT, NOT MORE THAN FIVE PERCENT (5%) MAGNESIUM OXIDE (MgO), AND NOT MORE THAN FIVE PERCENT (5%) IRON OXIDE (Fe2O3). A SAMPLE OF THE LIMESTONE MUST BE TESTED BY A THIRD PARTY LABORATORY AND THE RESULTS MUST BE SUBMITTED FOR REVIEW PRIOR TO PLACEMENT OF ANY LIMESTONE. ALL LIMESTONE AGGREGATE USED ON SITE SHALL MEET THE ABOVE SPECIFICATION. CERTIFICATION WILL BE REQUIRED FOR QUALITY AND CLASSIFICATION OF ALL AGGREGATE USED ON SITE.
- THE CONTRACTOR SHALL BE RESPONSIBLE FOR THE REMOVAL AND DISPOSAL FOR ALL UNUTILIZED MATERIAL ON THE SITE.
- THE CONTRACTOR SHALL COORDINATE WITH THE PROPER ENTITIES CONCERNING THE REMOVAL OF ANY COAL DIRT THAT MAY BE ON-SITE. ANY COAL DIRT FOUND ON SITE MAY NOT BE UTILIZED IN THE CONSTRUCTION OF THE TREATMENT SYSTEM. THIS PRODUCT MUST BE STORED IN AN ACCESSIBLE AREA ON THE SITE.
- ALL CLAY MATERIAL SHALL BE COMPACTED TO ELIMINATE SEEPAGE.
- MATERIAL FOR CONSTRUCTION OF BERMS SHALL BE CLEAN FILL, FREE OF ORGANIC MATERIAL AND STONES IN EXCESS OF 6" IN DIAMETER.
- WETLAND PLANTING SHALL BE THE RESPONSIBILITY OF THE SCHUYLKILL HEADWATERS ASSOCIATION. ALL OTHER PLANTING SHALL BE THE RESPONSIBILITY OF THE CONTRACTOR.
- TRACKED EQUIPMENT SHALL BE ALLOWED ON-SITE. IT IS THE CONTRACTOR'S RESPONSIBILITY TO REPAIR ANY DAMAGE CAUSED BY SUCH EQUIPMENT.
- THE CONTRACTOR SHALL BE RESPONSIBLE FOR NOTIFYING SCHUYLKILL TOWNSHIP, READING ANTHRACITE COMPANY, THE SCHUYLKILL HEADWATERS ASSOCIATION, INC., RETTEW ASSOCIATES, INC. AND THE SCHUYLKILL CONSERVATION DISTRICT TEN (10) WORKING DAYS PRIOR TO THE START OF CONSTRUCTION.
- THE PLAN LOCATIONS AND DIMENSIONS SHALL BE STRICTLY ADHERED TO UNLESS OTHERWISE DIRECTED BY THE ENGINEER. PLAN CHANGES, SHOULD THEY BE REQUIRED, ARE SUBJECT TO MUNICIPAL AND COUNTY ORDINANCES.
- CONCRETE REINFORCING DESIGN TO BE PERFORMED BY MANUFACTURER.
- ALL CONCRETE SHALL BE AT MINIMUM 3,000 PSI.

LEGEND:

	EXISTING	PROPOSED
UTILITY LINE/POLE		
GAS LINE/GATE VALVE & BOX		
WATER LINE/HYD./VALVE		
SEWER LINE/MANHOLE		
LOW PRESSURE SEWER/FORCE MAIN		
STORM LINE/INLET/ENDWALL		
CONTOUR		
ADJOINERS/PROPERTY LINE		
UNDERGROUND ELECTRICAL		
OVERHEAD ELECTRICAL		
EDGE OF WETLANDS		
EASEMENT LINE		
RIGHT-OF-WAY LINE		
BOUNDARY LINE		
CENTERLINE		
EDGE OF PAVEMENT		
DRIVEWAY		
SILT FENCE		
FENCE		
WOODS LINE		
GUY WIRE		
TREE		
SHRUB		
MAIL BOX		
SIGN		
SOIL SAMPLE POINT		



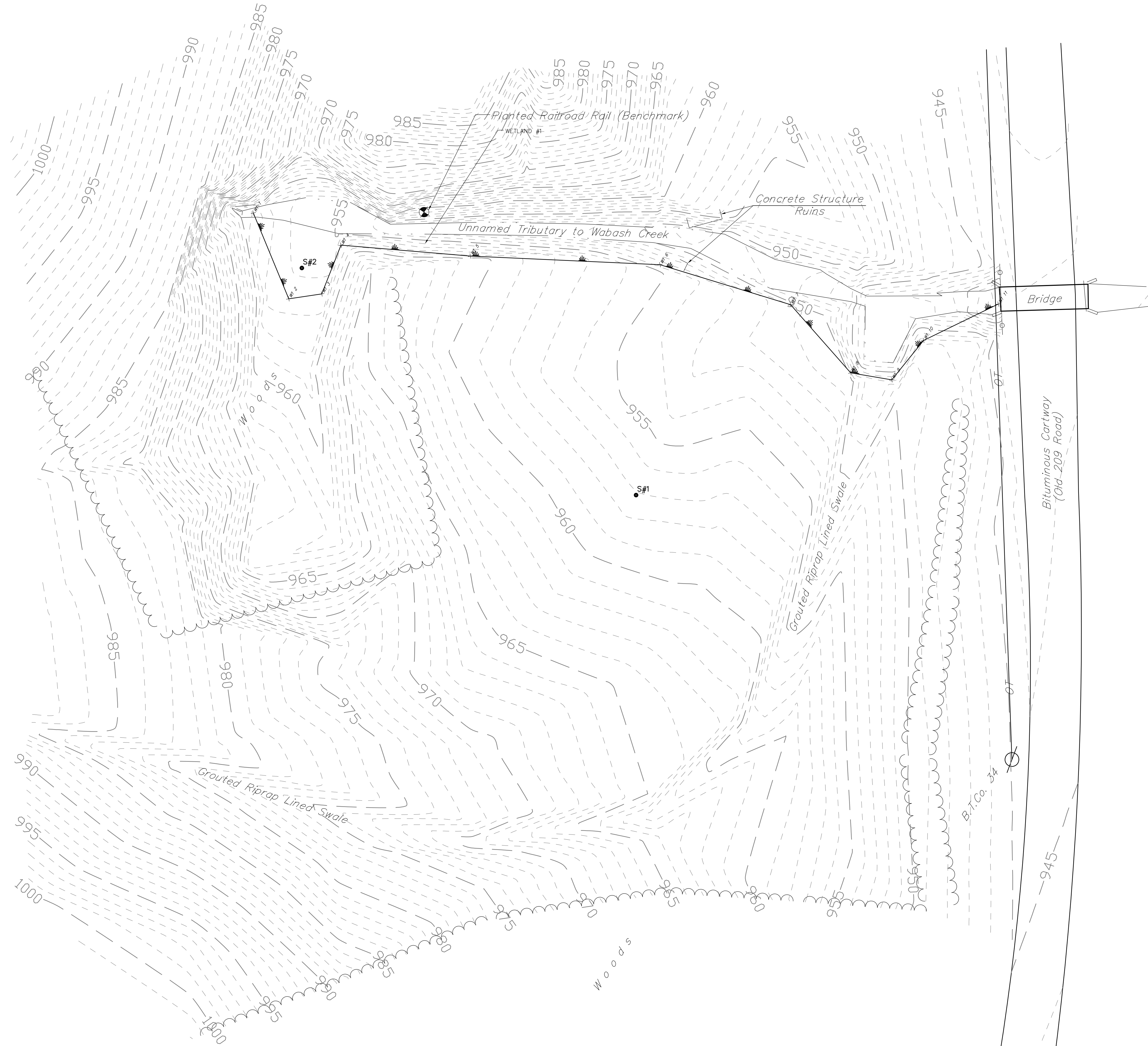
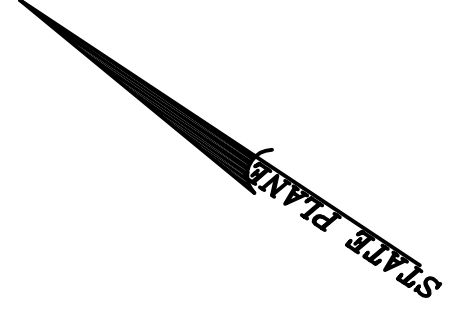
FOR RETTEW ASSOCIATES BY:	FEEDBOOK NO.	DATA COLLECTOR
CLAYTON E. BUBECK		
REGISTERED PROFESSIONAL ENGINEER	CHKD BY:	CBB
	DESIGNED BY:	OH
	CHKD BY:	OH
	DESIGNED BY:	CBB/CH
	CHKD BY:	CBB/CH
	DRAWING REFERENCE:	N: 03-04234-02-0008/EA/03-04234-002-Cover.dwg
	ADDRESS:	

CLIENT
SCHUYLKILL HEADWATERS ASSOCIATION, INC.
P.O. BOX 138
POTTSVILLE, PA 17901
(570) 385-2122

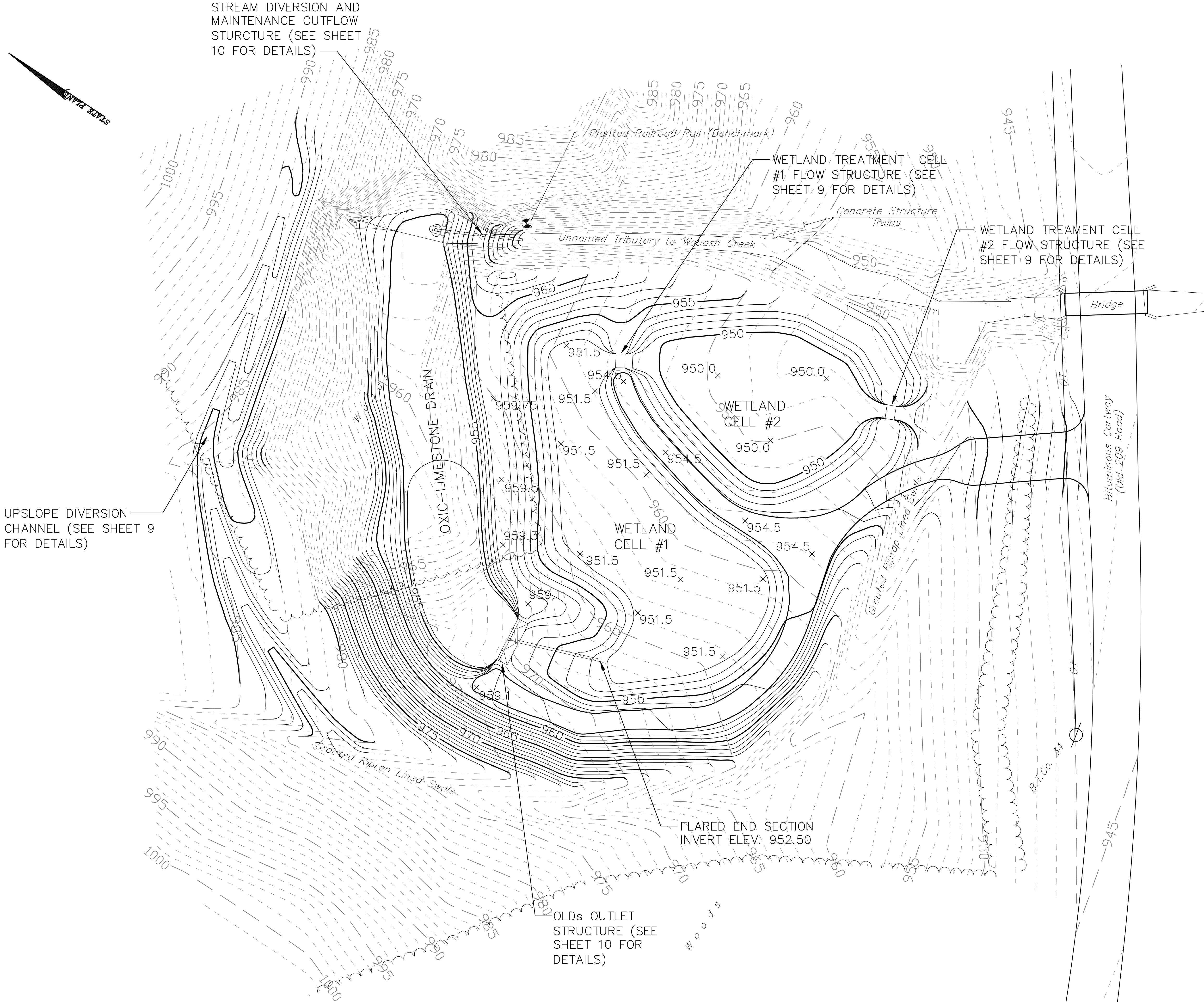
RETTEW
Associates, Inc.
Union Street Station, 101 East Union Street
Pottsville, PA 17901
Phone (570) 622-8222 • Fax (570) 622-4260
www.retrew.com
Pottsville, PA
Berks County, PA
Schuylkill County, PA
Employees • 20 • Services • Surveying • Landscape Architecture
Engineering • Environmental Consultants • IT Consultants

ABANDONED MINE DRAINAGE
REMEDATION PROJECT
FOR THE
REEVESDALE #2 DISCHARGE
SCHUYLKILL HEADWATERS ASSOCIATION, INC.
COVER SHEET

DATE: MAY 23, 2005
SHEET NO. 1 OF 10
DWG. NO. 03-04234-002



<p>ABANDONED MINE DRAINAGE REMEDATION PROJECT FOR THE REEVESDALE #2 DISCHARGE</p> <p>SCHUYLKILL HEADWATERS ASSOCIATION, INC. EXISTING SITE PLAN</p> <p>SCHUYLKILL TOWNSHIP SCHUYLKILL COUNTY, PA</p>		<p>DATE: MAY 23, 2005</p> <p>SHEET NO. 2 OF 10</p> <p>DWG. NO. 03-04234-002</p>		<p>FOR REVIEW ASSOCIATES BY:</p>		<p>MANAGER: CLAYTON BUBECK, P.E. DESIGN BY: CEB/CH DRAWING REFERENCE: H:\03\04234-02\0000\EA\03-04234-002-Existing Site Plan.dwg</p>		<p>SURV. CHIEF: R. ORNER DRAWN BY: CH</p>		<p>FIELDBOOK NO. DATA COLLECTOR CHD BY: CEB</p>		<p>CLIENT SCHUYLKILL HEADWATERS ASSOCIATION, INC. P.O. BOX 138 POTTSVILLE, PA 17901 (570) 385-2122</p>		<p>SCALE 0 10 20 40 60 1" = 20'</p>		<p>RETNEW RETNEW Associates, Inc. Union Street Station, 101 East Union Street Pottsville, PA 17901 Phone (570) 622-8222 · Fax (570) 622-4260 Website: www.retnew.com Pottsville, PA Office: 101 East Union Street Baltimore, MD Office: 1000 North Broadway Engineers · Planners · Surveyors · Landscape Architects Environmental Consultants · IT Consultants</p>		<p>NO. DATE</p>		<p>REVISION</p>	
---	--	---	--	----------------------------------	--	--	--	---	--	---	--	---	--	---	--	---	--	-----------------	--	-----------------	--



STREAM DIVERSION AND MAINTENANCE OUTFLOW STRUCTURE (SEE SHEET 10 FOR DETAILS)

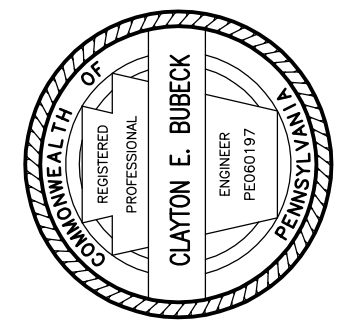
UPSLOPE DIVERSION CHANNEL (SEE SHEET 9 FOR DETAILS)

WETLAND TREATMENT CELL #1 FLOW STRUCTURE (SEE SHEET 9 FOR DETAILS)

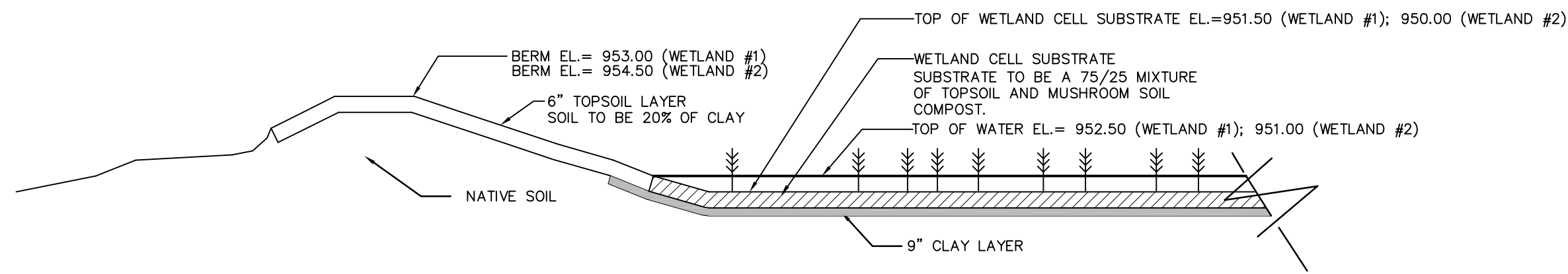
WETLAND TREATMENT CELL #2 FLOW STRUCTURE (SEE SHEET 9 FOR DETAILS)

FLARED END SECTION INVERT ELEV. 952.50

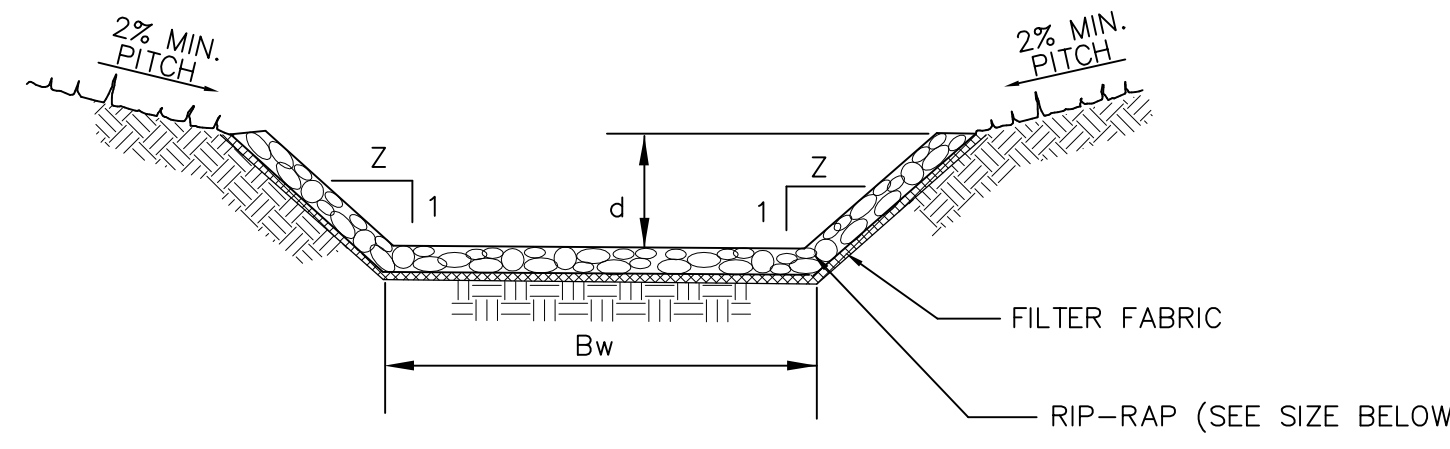
OLDs OUTLET STRUCTURE (SEE SHEET 10 FOR DETAILS)

<p>FOR RETIEW ASSOCIATES BY:</p> 		NO.	DATE	REVISION		
<p>MANAGER: CLAYTON BUBECK, P.E.</p>	<p>SURV. CHIEF: R. ORNER</p>	<p>FIELDBOOK NO. DATA COLLECTOR</p>	<p>CHKD BY: CEB</p>	<p>NO.</p>	DATE	REVISION
<p>DESIGN BY: CEB/CH</p>	<p>CHKD BY: CH</p>	<p>DRAWING REFERENCE: N: 03-04234-02, 0088(EA)03-0024-002 - Excavation Plan.dwg</p>	<p>YREFS:</p>	<p>NO.</p>	DATE	REVISION
<p>CLIENT</p> <p>SCHUYLKILL HEADWATERS ASSOCIATION INC. P.O. BOX 138 POTTSVILLE, PA 17901 (570) 385-2122</p>		<p>SCALE</p> <p>1" = 20'</p> <p>0 10 20 40 60</p>		<p>DATE: MAY 23, 2005</p>		
<p>RETIEW RETIEW Associates, Inc. Union Street Station, 101 East Union Street Pottsville, PA 17901 Phone (570) 822-8222 - Fax (570) 822-4260 www.retiew.com Baltimore, PA - Camp Hill, PA - Pottsville, PA - York, PA Engineers - Planners - Surveyors - Landscape Architects Environmental Consultants - IT Consultants</p>		<p>ABANDONED MINE DRAINAGE REMEDIATION PROJECT FOR THE REEVESDALE #2 DISCHARGE</p> <p>SCHUYLKILL HEADWATERS ASSOCIATION, INC. EXCAVATION PLAN</p>		<p>SCHUYLKILL TOWNSHIP SCHUYLKILL COUNTY, PA</p>		
<p>SHEET NO. 3 OF 10</p>		<p>DWG. NO. 03-04234-002</p>		<p>ISSUED FOR BIDDING/CONSTRUCTION</p>		

*PLANTS TO BE PROVIDED BY OTHERS

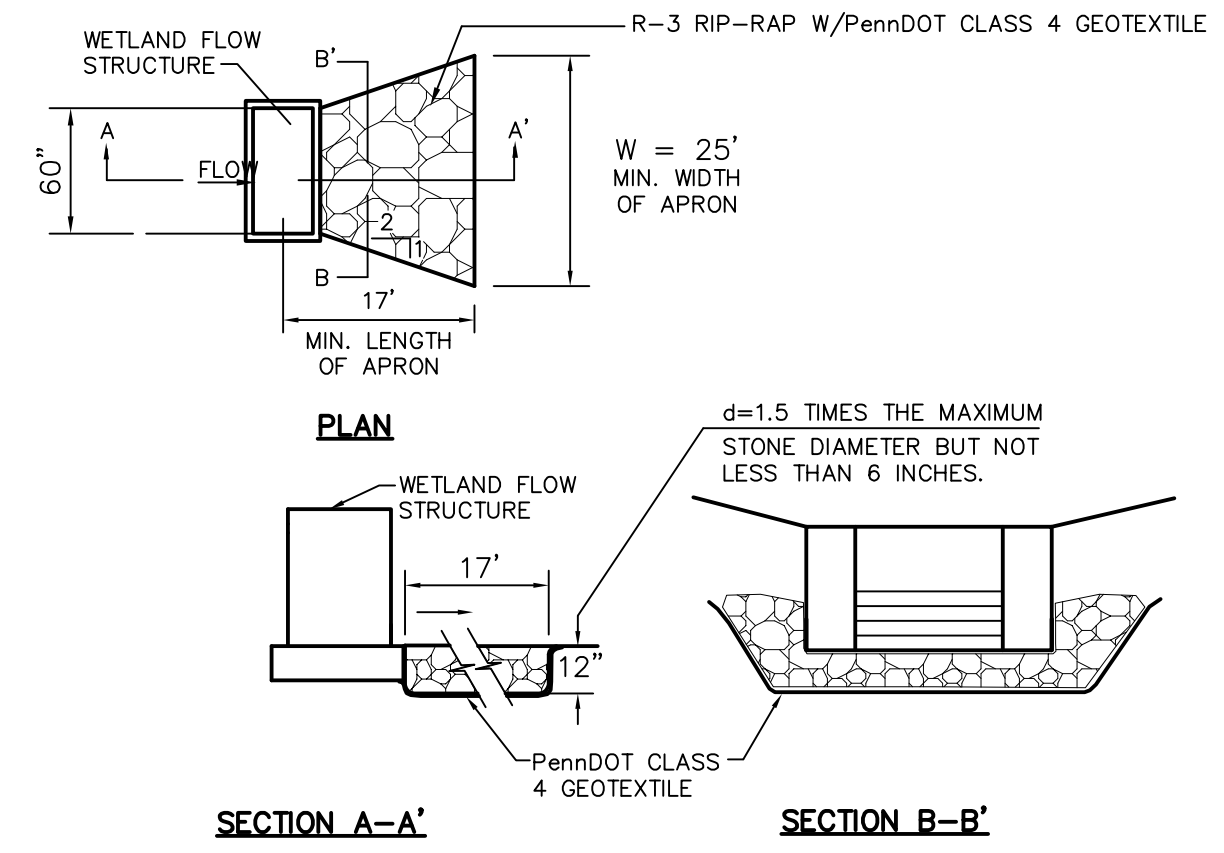


WETLAND CELL PROFILE (TYPICAL)
NOT TO SCALE



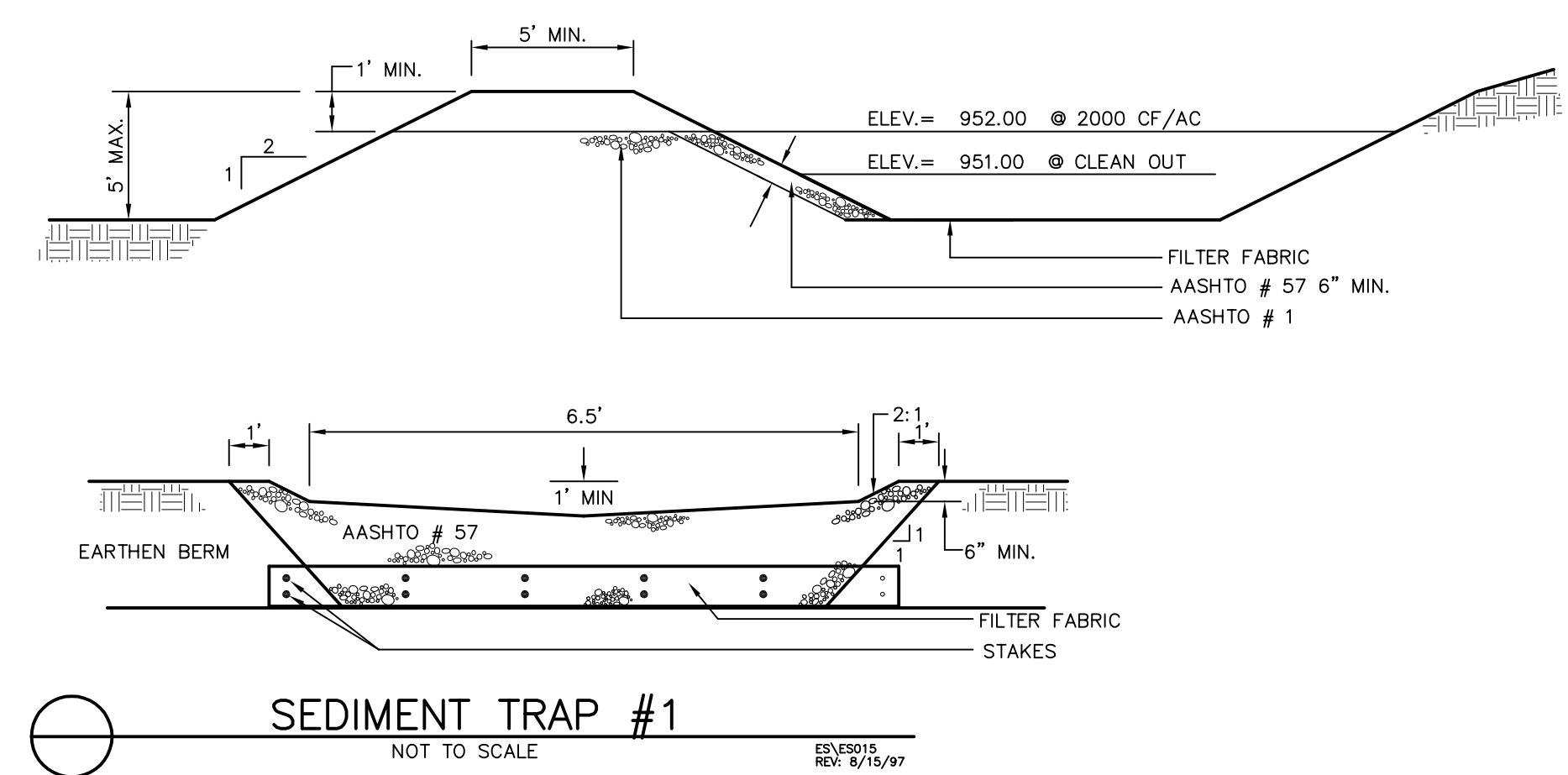
SWALE	Bw	d	Z	MIN. SLOPE	MAX. SLOPE	EROSION PROTECTION
STREAM DIVERSION OVERFLOW	15'	1'	2	33%	50%	R-3 RIP RAP, 12" THICK
OLD OUTFLOW	11'	1'	2	10%	20%	R-3 RIP RAP, 12" THICK

RIP-RAP SWALE DETAIL
NOT TO SCALE

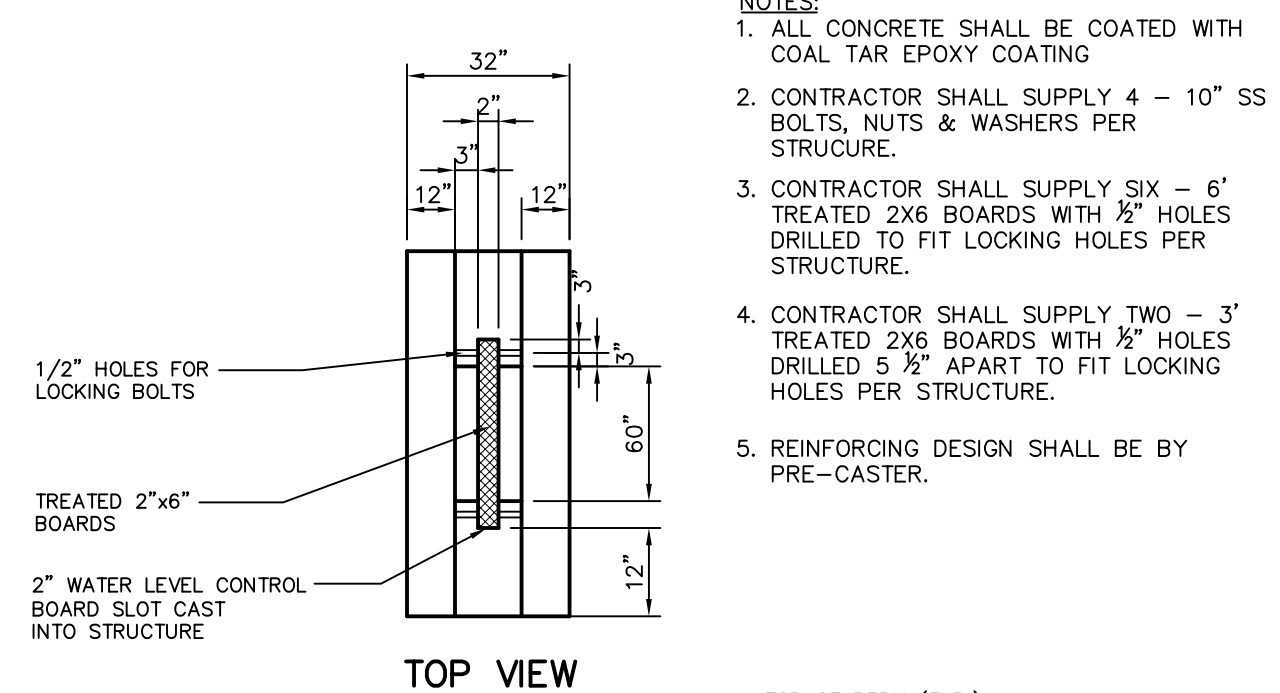


WETLAND FLOW STRUCTURE OUTLET PROTECTION
NOT TO SCALE

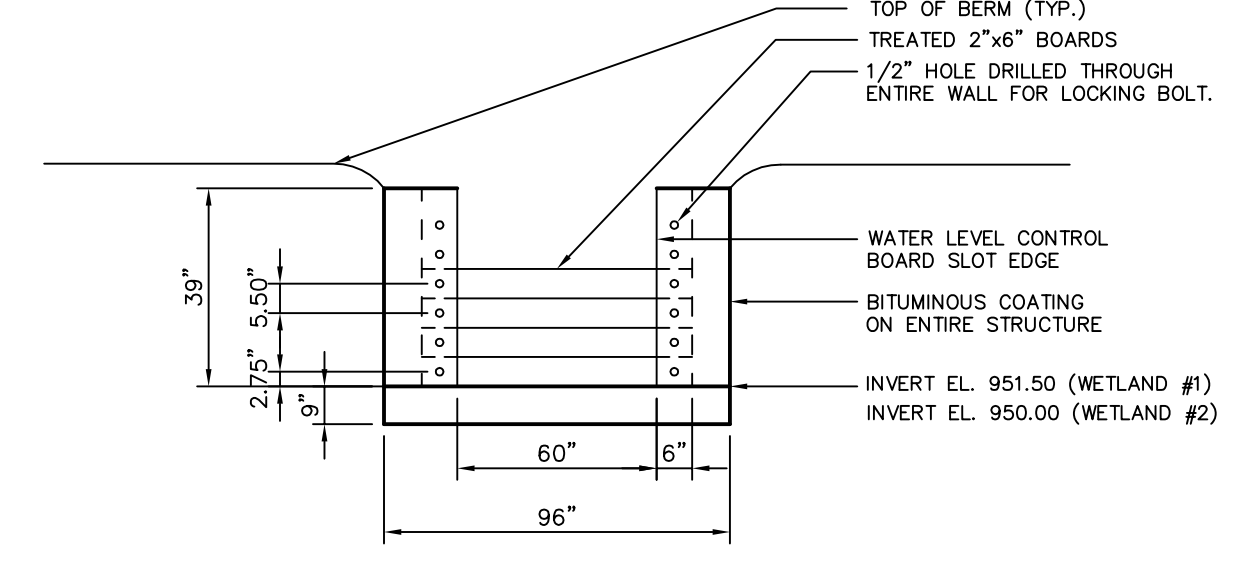
MINIMUM TAILWATER CONDITION ($T^w < 0.5$ DIAMETER)



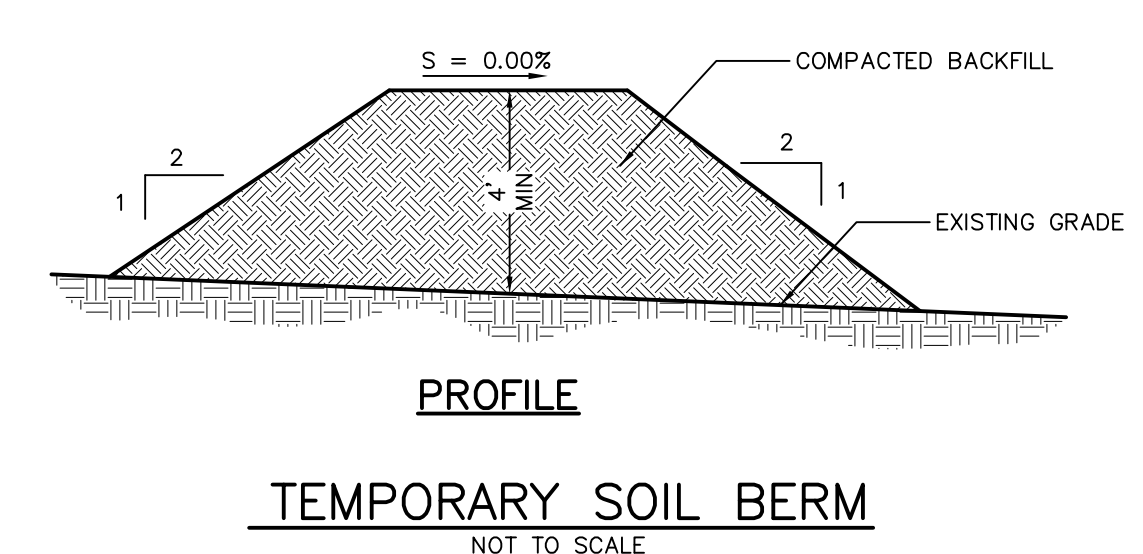
SEDIMENT TRAP #1
NOT TO SCALE



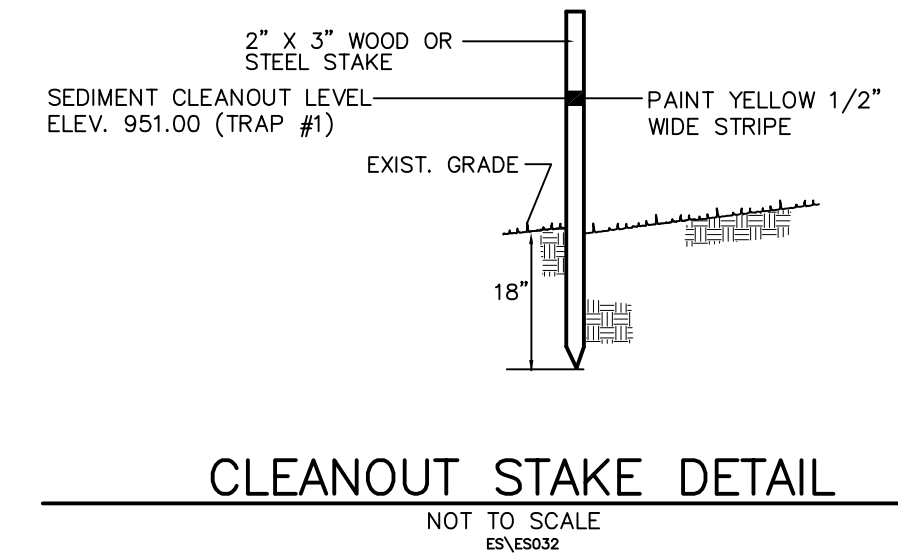
STONE DRIVE RESTORATION
NO SCALE



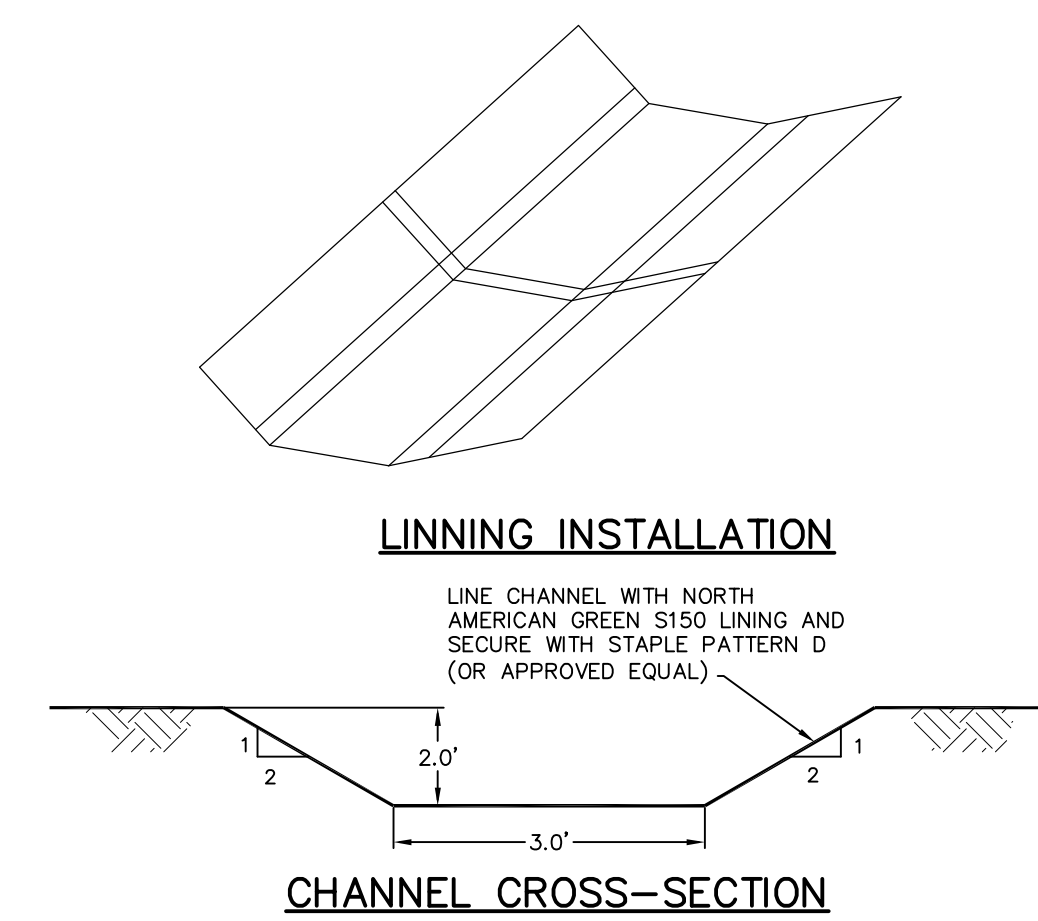
WETLAND FLOW STRUCTURES
NOT TO SCALE



TEMPORARY SOIL BERM
NOT TO SCALE

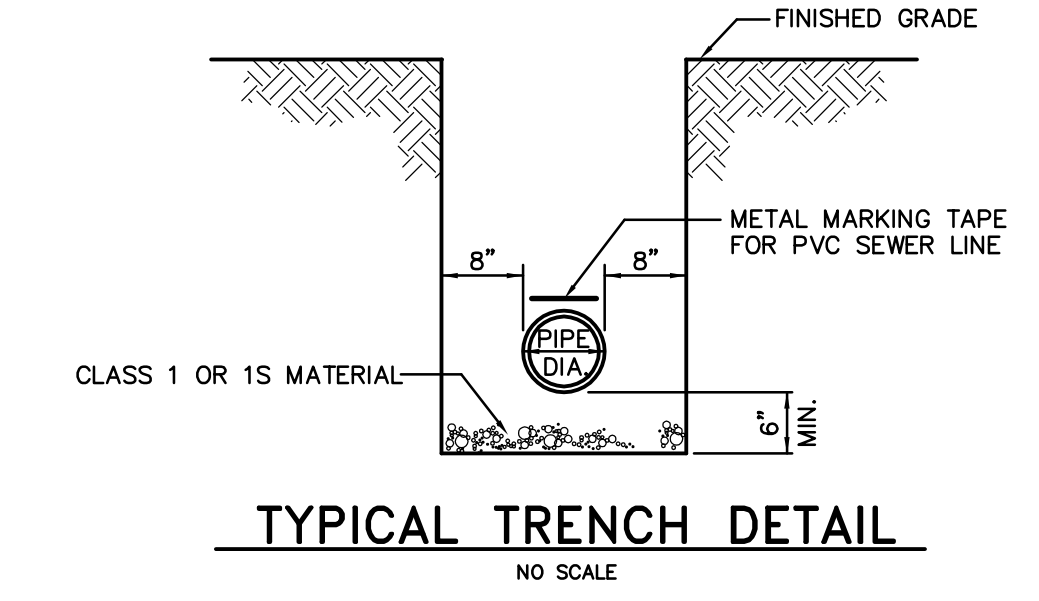


CLEANOUT STAKE DETAIL
NOT TO SCALE

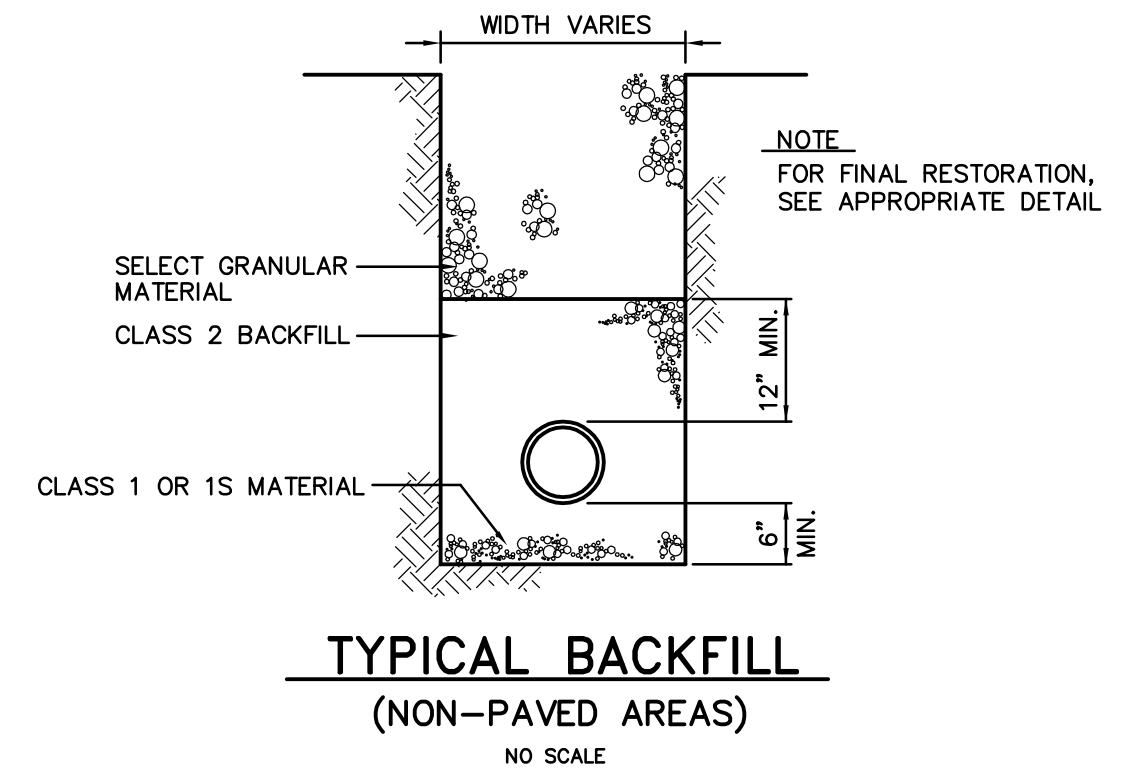


CHANNEL CROSS-SECTION

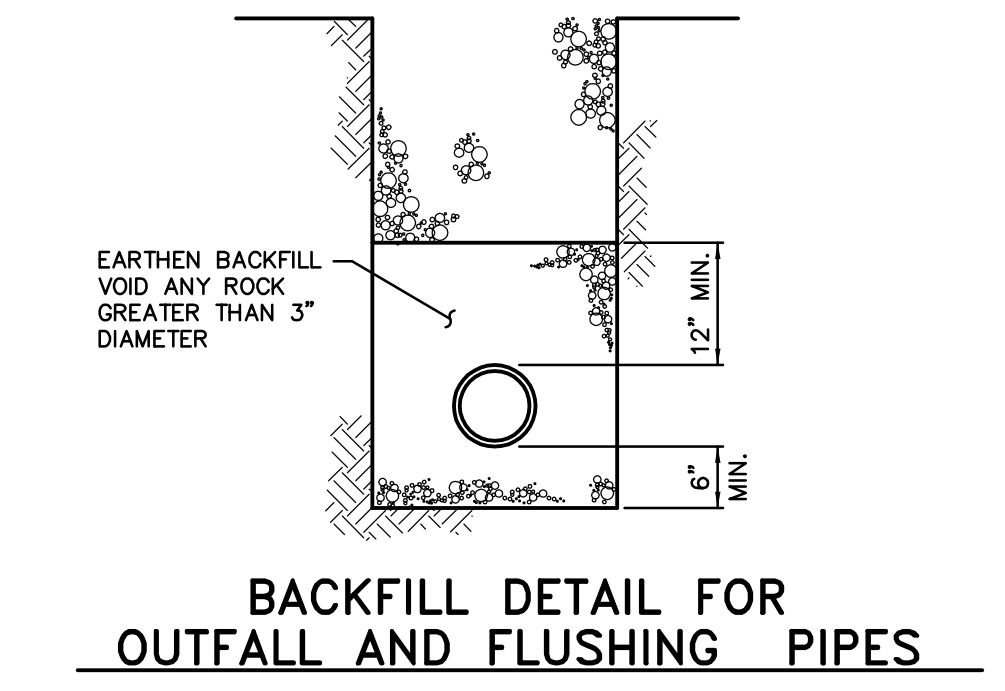
UPSLOPE DIVERSION CHANNEL DETAIL
NOT TO SCALE



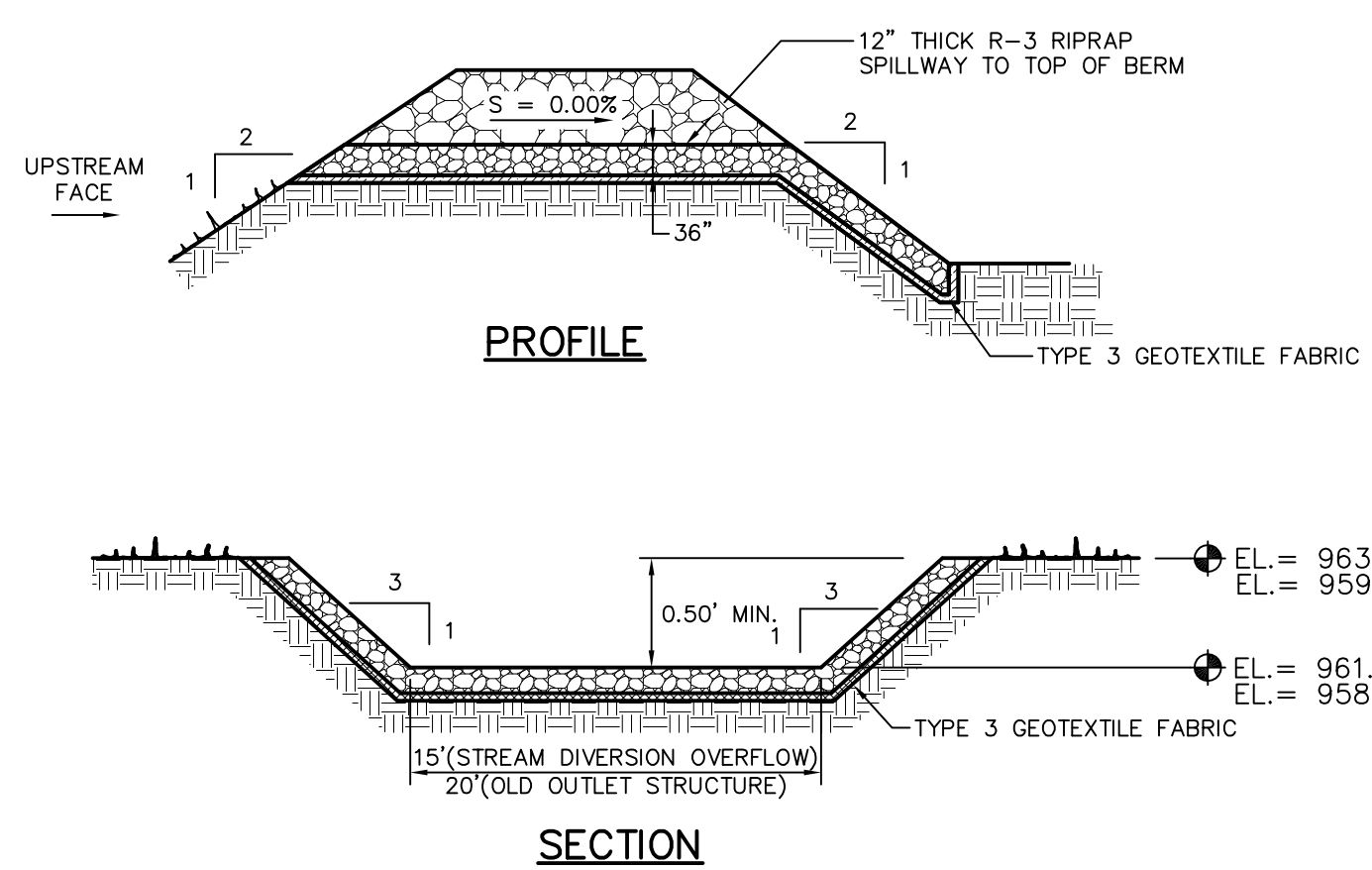
TYPICAL TRENCH DETAIL
NO SCALE



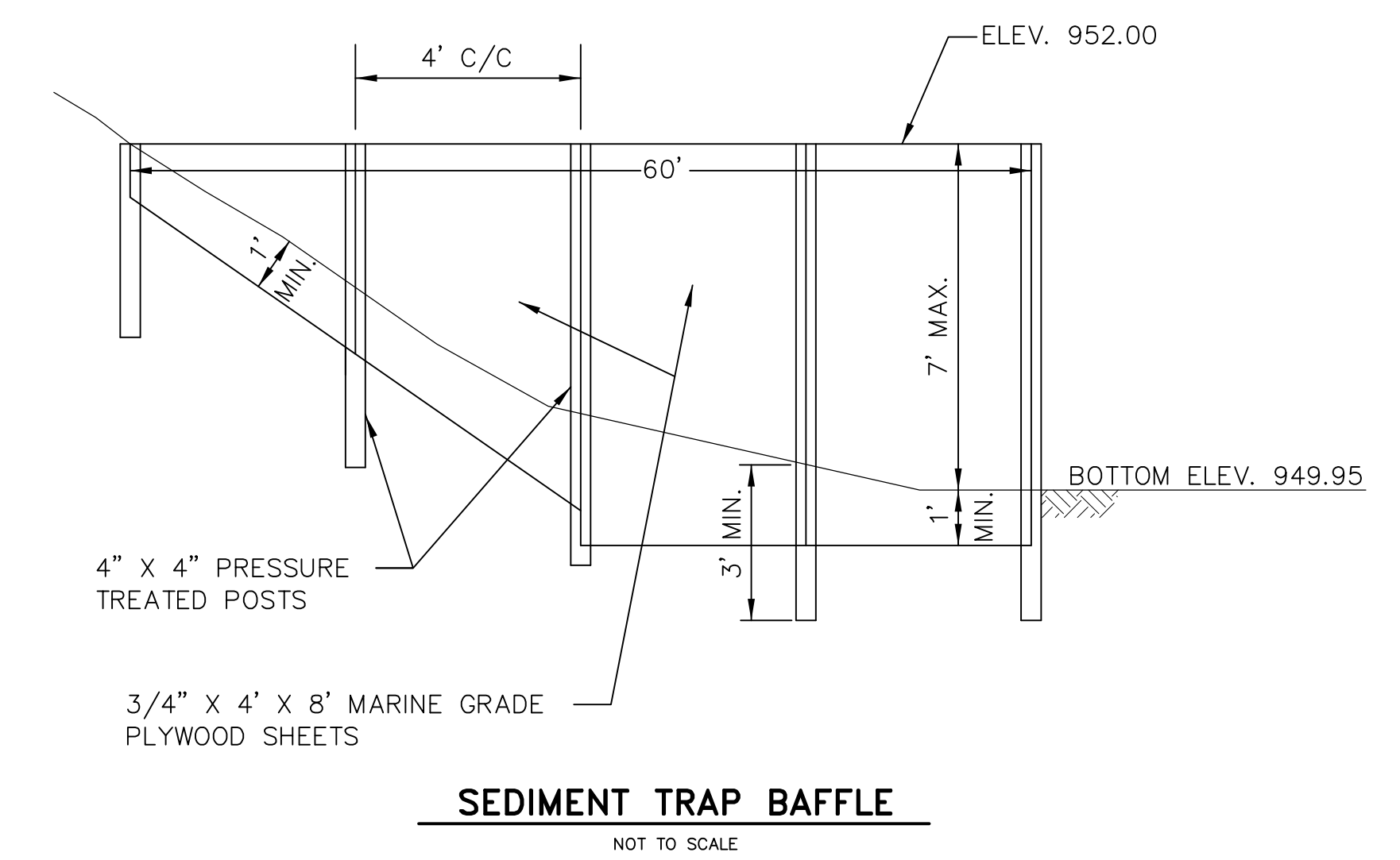
TYPICAL BACKFILL (NON-PAVED AREAS)
NO SCALE



BACKFILL DETAIL FOR OUTFALL AND FLUSHING PIPES

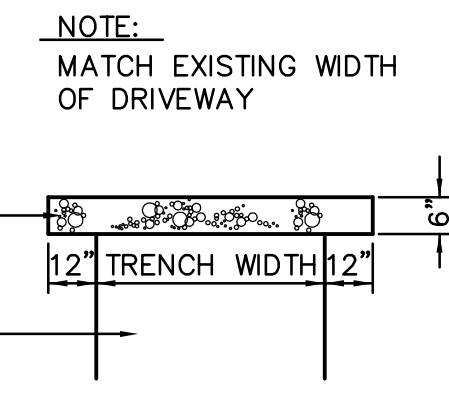


EMERGENCY SPILLWAY
NOT TO SCALE

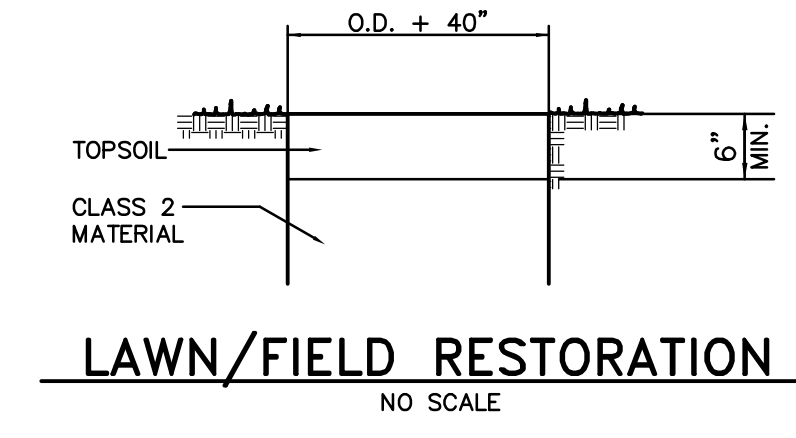


SEDIMENT TRAP BAFFLE
NOT TO SCALE

- NOTES:
1. ALL CONCRETE SHALL BE COATED WITH COAL TAR EPOXY COATING
 2. CONTRACTOR SHALL SUPPLY 4 - 10" SS BOLTS, NUTS & WASHERS PER STRUCTURE.
 3. CONTRACTOR SHALL SUPPLY SIX - 6' TREATED 2X6 BOARDS WITH 1/2" HOLES DRILLED TO FIT LOCKING HOLES PER STRUCTURE.
 4. CONTRACTOR SHALL SUPPLY TWO - 3' TREATED 2X6 BOARDS WITH 1/2" HOLES DRILLED 5 1/2" APART TO FIT LOCKING HOLES PER STRUCTURE.
 5. REINFORCING DESIGN SHALL BE BY PRE-CASTER.



STONE DRIVE RESTORATION
NO SCALE

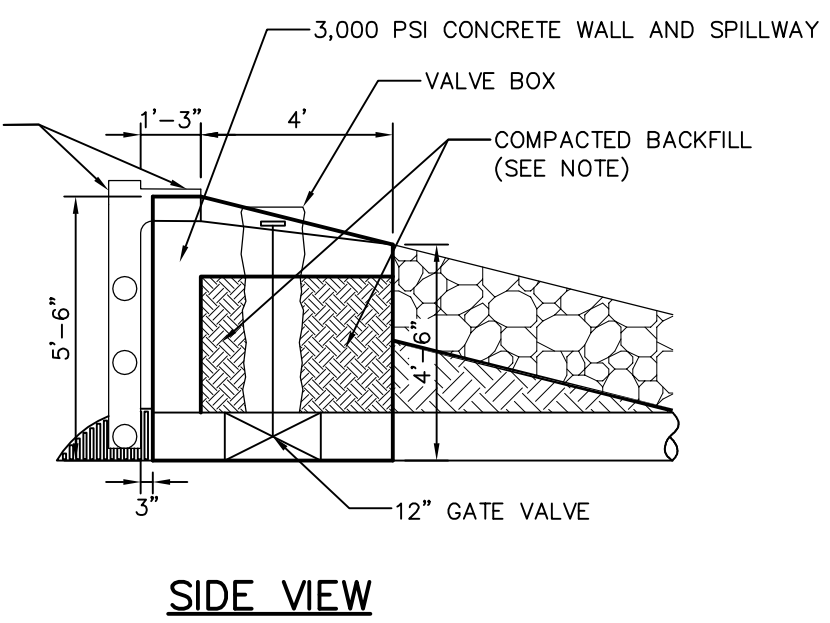
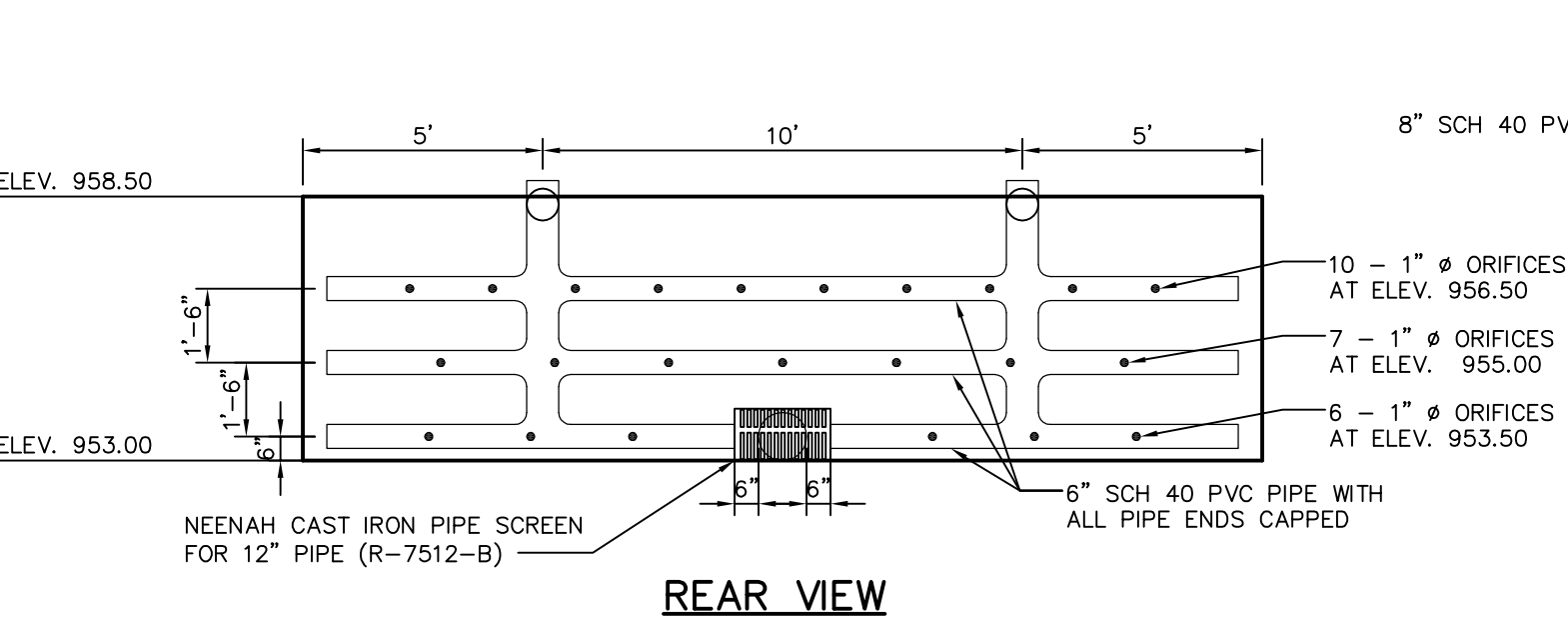
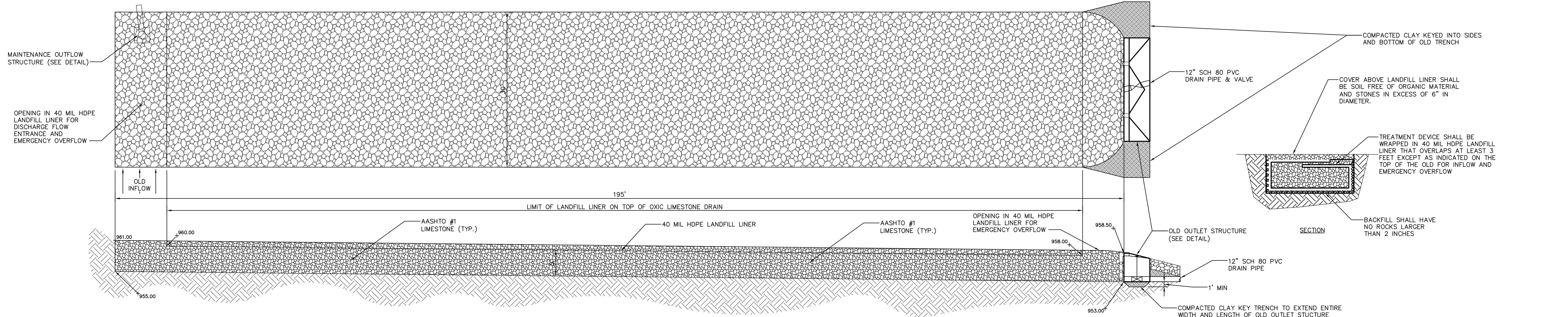


LAWN/FIELD RESTORATION
NO SCALE

LINING INSTALLATION

LINE CHANNEL WITH NORTH AMERICAN GREEN S150 LINING AND SECURE WITH STAPLE PATTERN D (OR APPROVED EQUAL)

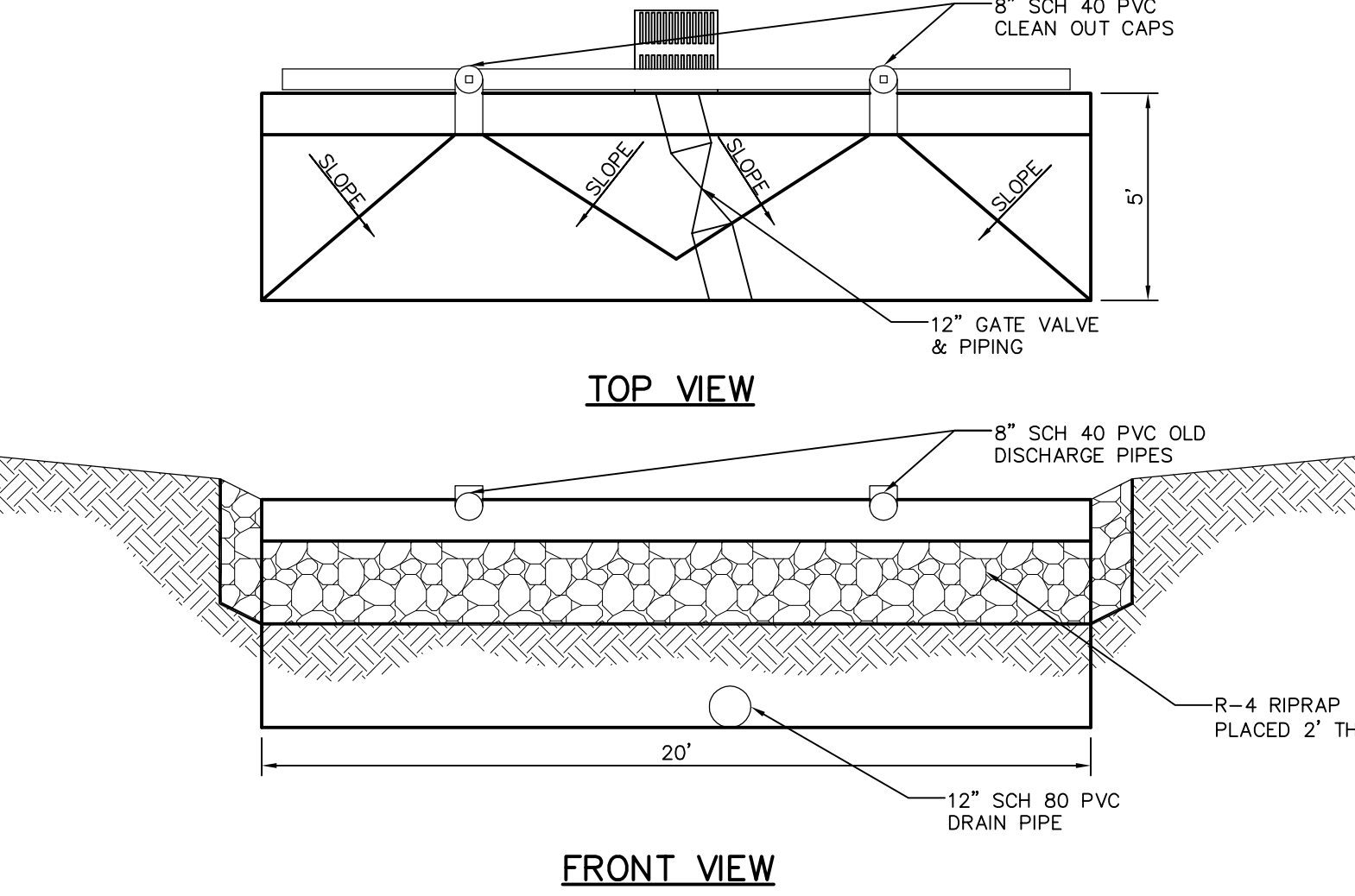
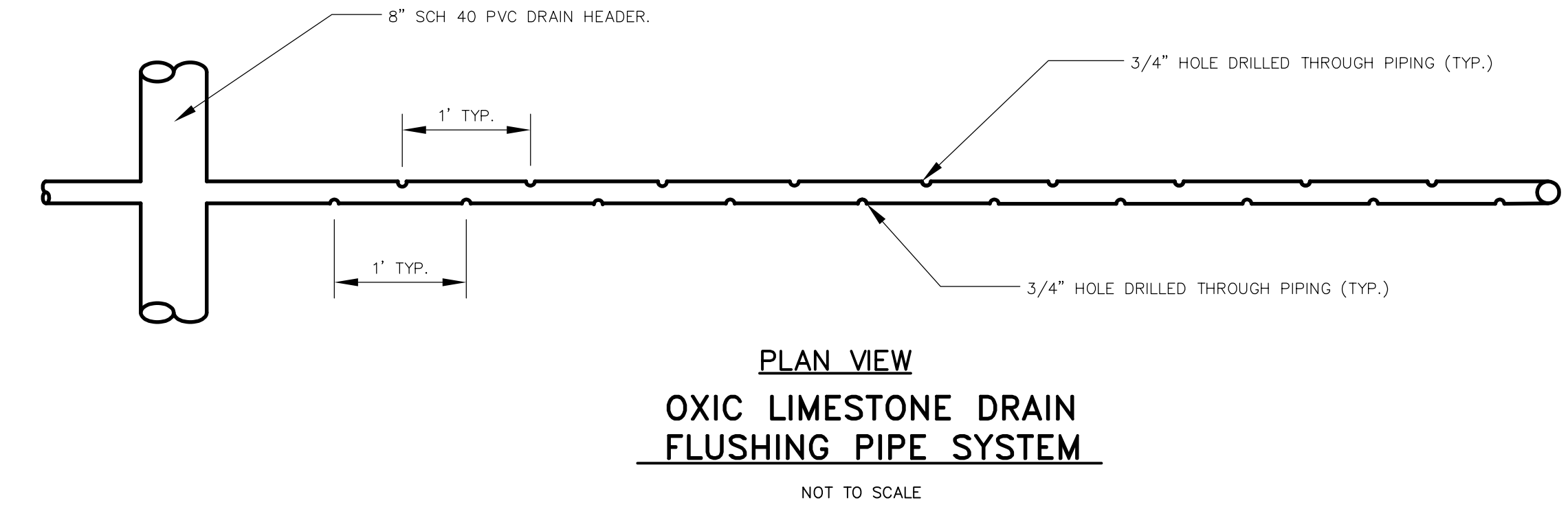
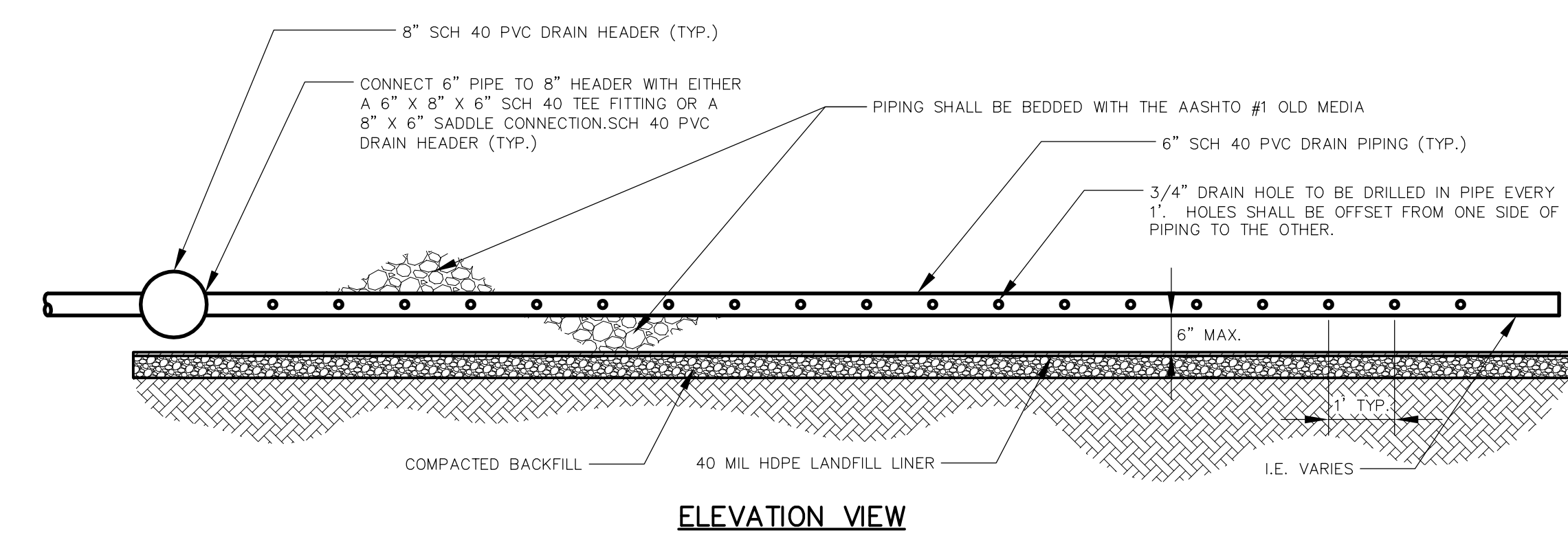
FOR RETIEW ASSOCIATES BY:				NO.	DATE	REVISION
MANAGER:	CLAYTON BUBECK, P.E.	FEEDBOOK NO.:				
DESIGN BY:	CEB/CH	DATA COLLECTOR:				
CHKD BY:	CH	CHKD BY:	CEB			
SURV. CHIEF:	R. ORNER	DRAWN BY:	CH			
CLIENT:			SCHUYLKILL HEADWATERS ASSOCIATION, INC. P.O. BOX 138 POTTSVILLE, PA 17901 (570) 385-2122			
			RETIEW ASSOCIATES, INC. Union Street Station, 101 East Union Street Pottsville, PA 17901 Phone (570) 822-8222 - Fax (570) 822-4260 Behlheim, PA - Comp. Hill, PA - Pottsville, PA - York, PA Engineers - Planners - Surveyors - Landscape Architects Environmental Consultants - IT Consultants			
ABANDONED MINE DRAINAGE REMEDIATION PROJECT FOR THE REEVESDALE #2 DISCHARGE			SCHUYLKILL HEADWATERS ASSOCIATION, INC. SITE DETAILS			
DATE: MAY 23, 2005			SHEET NO. 9 OF 10			
DWG. NO. 03-04234-002			ISSUED FOR BIDDING/CONSTRUCTION			



OXIC LIMESTONE DRAIN
SCALE 1" = 10'

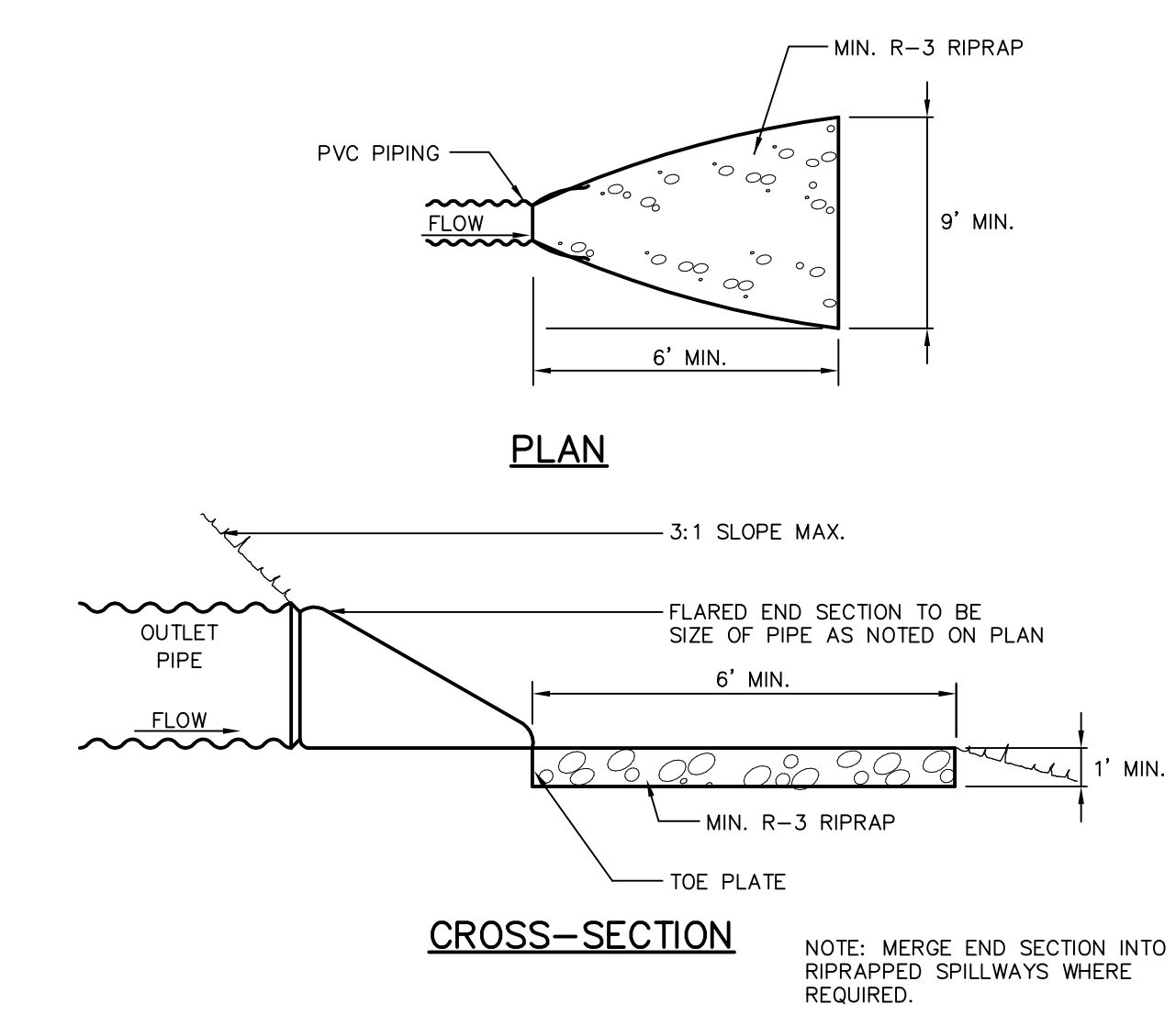
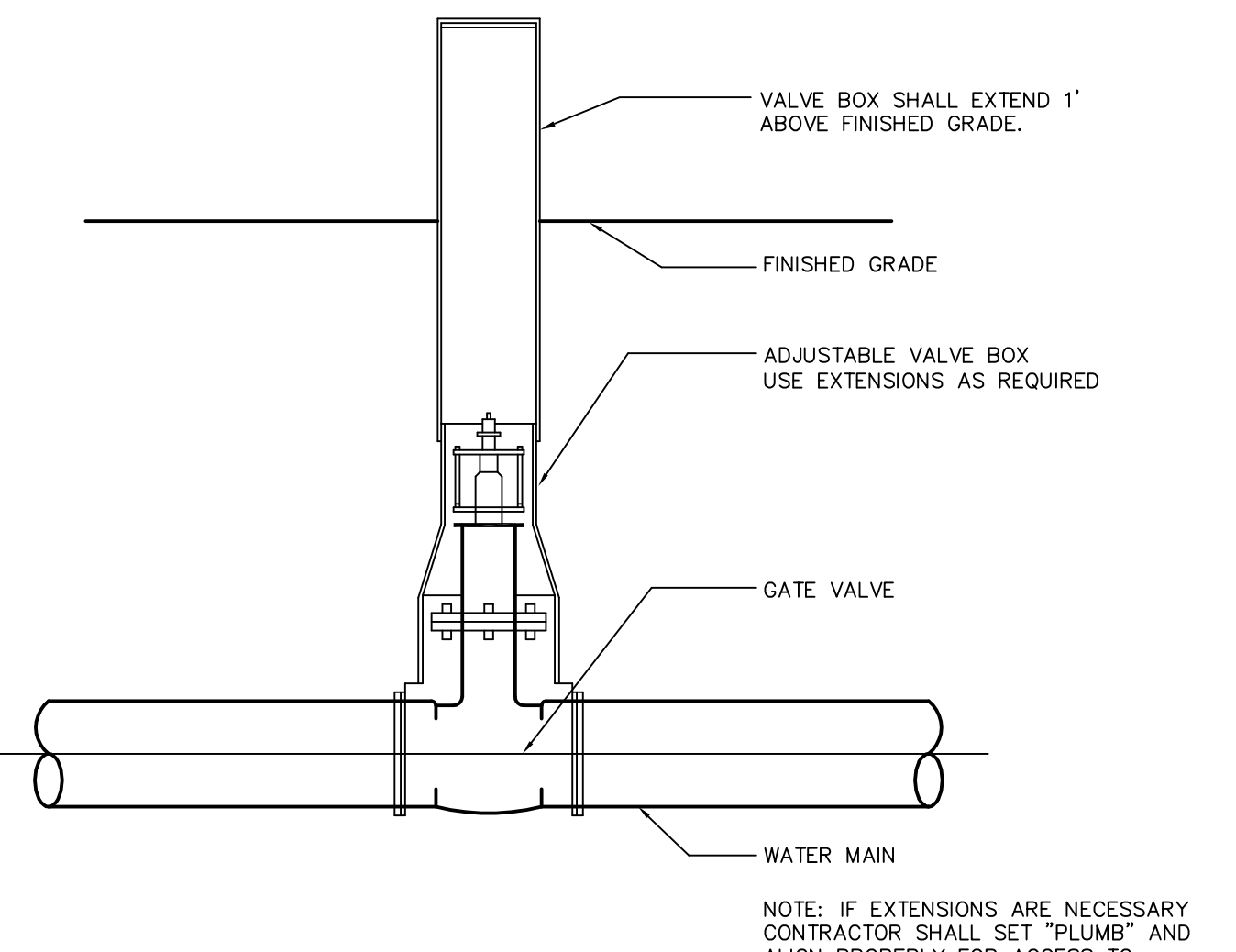
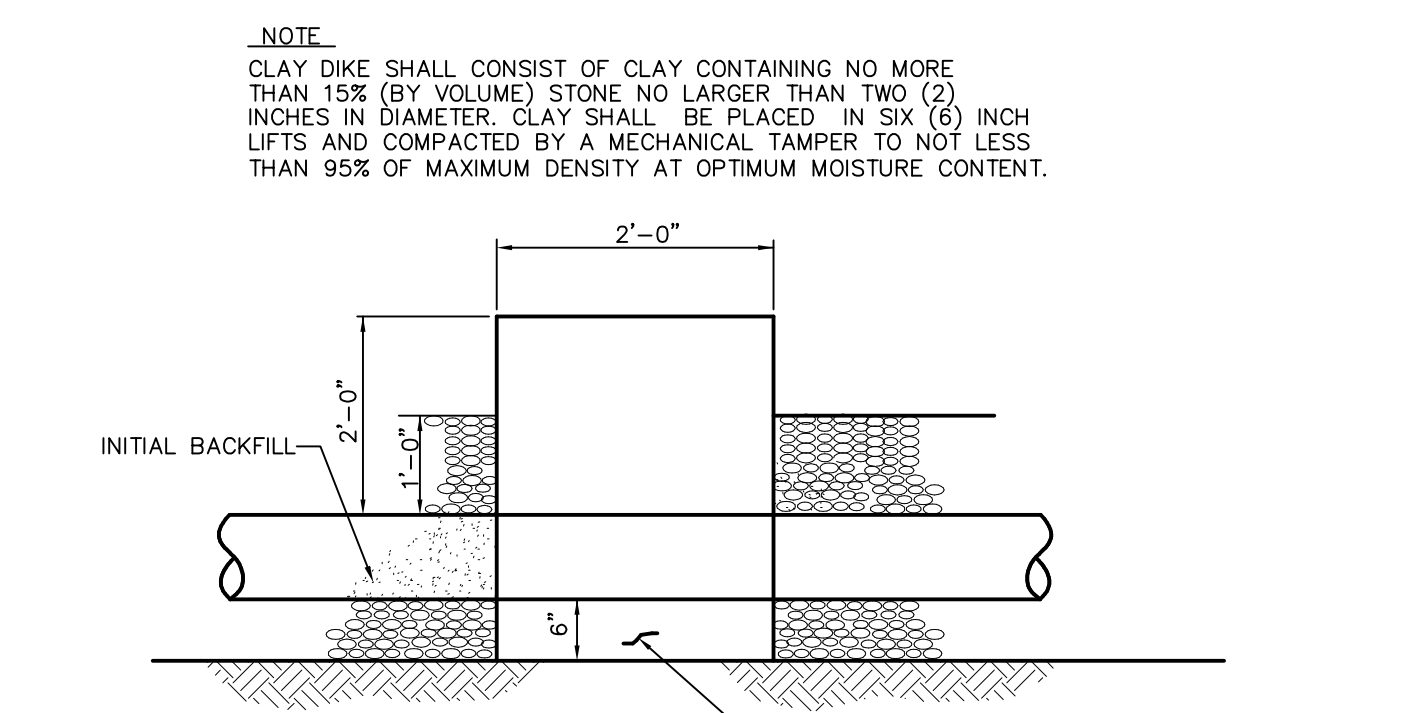
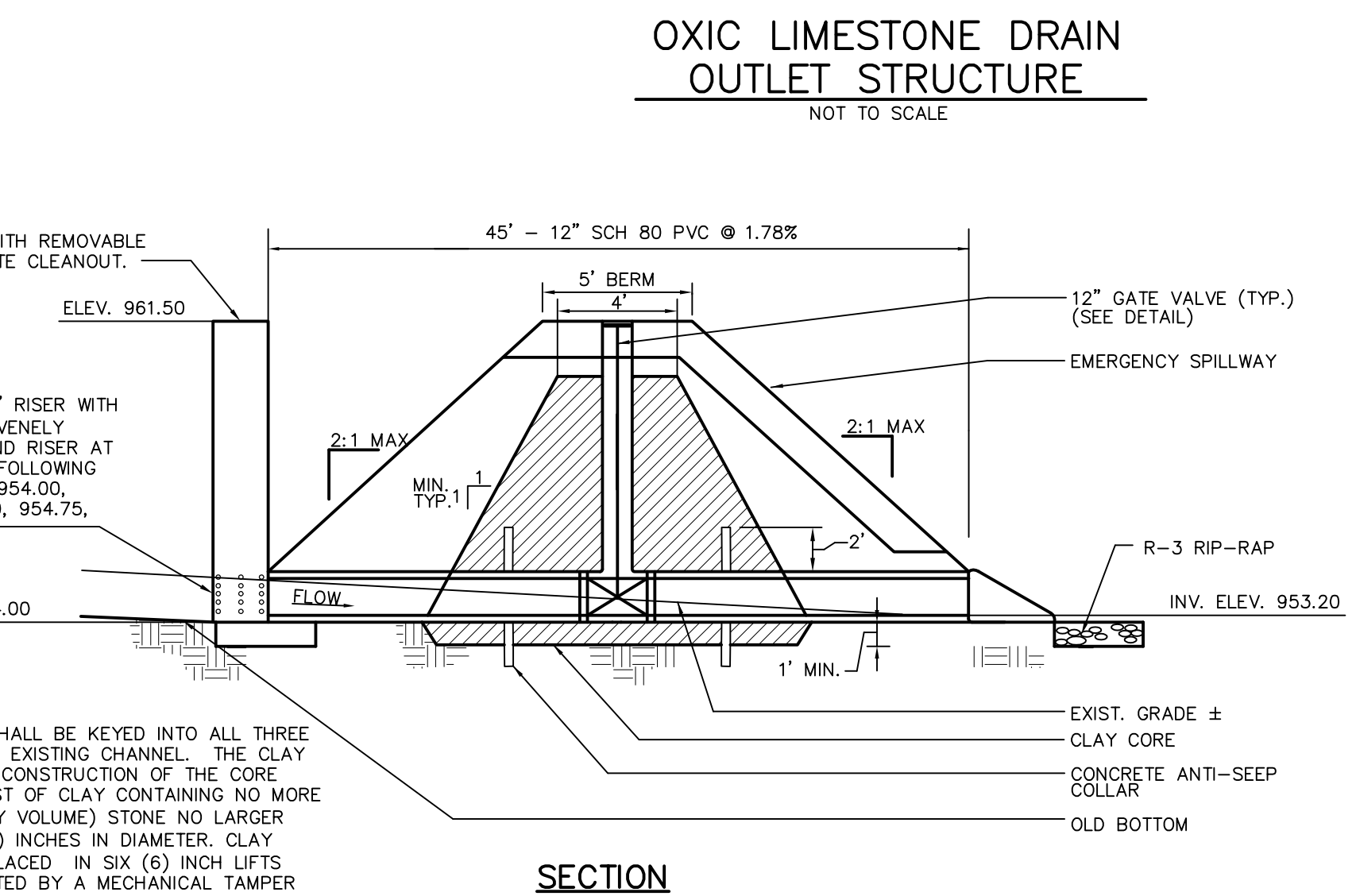
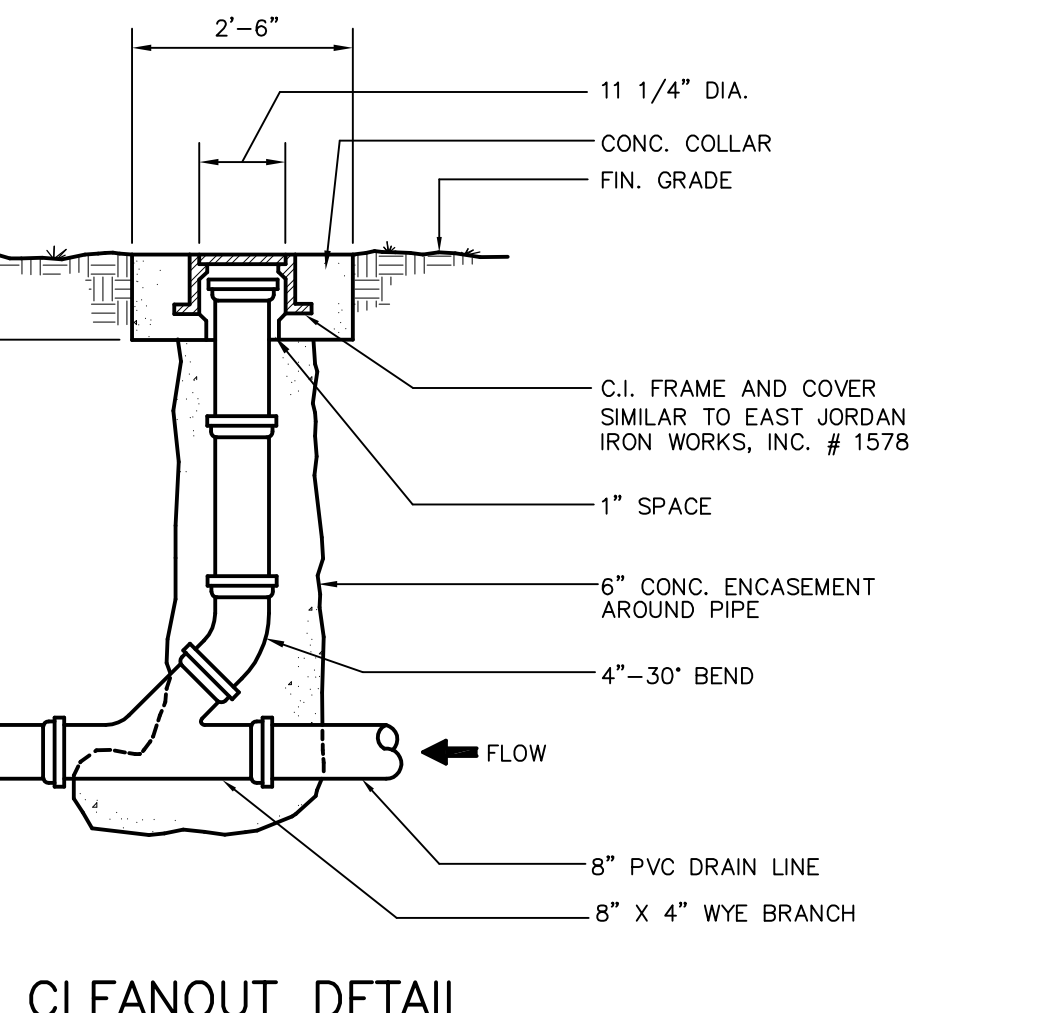
NOTES:

- FLUSHING SYSTEM PIPING NOT SHOWN FOR CLARITY.
- ALL CONCRETE STRUCTURES SHALL BE COATED WITH TWO (2) COATS OF COAL TAR EPOXY COATING.
- CONTRACTOR SHALL COORDINATE WITH REPRESENTATIVES FROM USGS TO INSTALL EIGHT (8) MONITORING PORTS, TO BE PROVIDED BY USGS.
- 40 MIL HDPE LANDFILL LINER SHALL BE WRAPPED AROUND THE ENTIRE OLD EXCEPT WHERE THE DISCHARGE FLOW ENTERS THE OLD AND WHERE EMERGENCY OVERFLOWS ARE PROVIDED.



NOTES:

- COMPACTED BACKFILL WILL BE COMPACTED IN 6 INCH LIFTS AND SHALL NOT CONTAIN STONES LARGER THAN TWO (2) INCHES IN DIAMETER, OR ORGANIC MATTER.
- ALL CONCRETE SHALL HAVE A MINIMUM 28 DAY COMPRESSIVE STRENGTH OF 3,000 PSI. THE MIX DESIGN SHALL BE SUBMITTED TO THE ENGINEER PRIOR TO PLACEMENT. SEE CONSTRUCTION SPECIFICATIONS FOR ADDITIONAL CONCRETE REQUIREMENT.
- CONCRETE REINFORCING SHALL BE #4 BAR AT 12" EACH WAY AND ON EACH FACE.



NO.	DATE	REVISION

FOR REVIEW ASSOCIATES BY:

CLAYTON E. BURECK
PROFESSIONAL ENGINEER
POTTSVILLE, PA

MANAGER: CLAYTON BURECK, P.E.
DESIGN BY: CEE/CH
CHECK BY: CEE/CH

SURV. CHIEF: R. ORNER
DRAWN BY: CH

FIELDBOOK NO. DATA COLLECTOR
CHECK BY: CEB

DRAWING REFERENCE:
N: US1034234-02; US088 (A) 03-04234-002; 04-048 (E) 03-04234-002; 04-048 (E) 03-04234-002

CLIENT: SCHUYLKILL HEADWATERS ASSOCIATION INC.
P.O. BOX 138
POTTSVILLE, PA 17901
(570) 385-2122

SCALE: NO SCALE

ABANDONED MINE DRAINAGE REMEDIATION PROJECT FOR THE REEVESDALE #2 DISCHARGE
SCHUYLKILL HEADWATERS ASSOCIATION, INC. SITE DETAILS
SCHUYLKILL TOWNSHIP SCHUYLKILL COUNTY, PA

DATE: MAY 23, 2005
SHEET NO. 10 OF 10
DWG. NO. 03-04234-002