



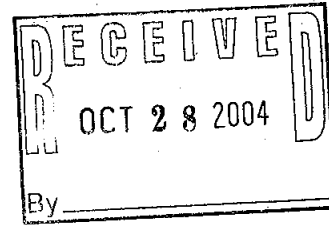
Earthtech, Inc.

CONSULTING SCIENTISTS & ENGINEERS

Environmental,
Site Developme
www.scientificc.
etihiram@atlanticb.

October 26, 2004

Mr. Louis T. Mellinger
Commonwealth Stone
1898 N. Center Avenue
Somerset, PA 15501



Re: Stop Log Shop Drawings

Dear Mr. Mellinger:

I have reviewed the drawings submitted for the above referenced item. The information provided meets the specifications for the Coploymer Stop Logs and the drawings are being returned to you marked as "No Exceptions Taken".

Copies have been forwarded to the Redevelopment Authority of Somerset County and to the Somerset Conservation District as well.

If you have any questions, please contact me.

Sincerely,

Hiram Ribblett, P.E.
Partner

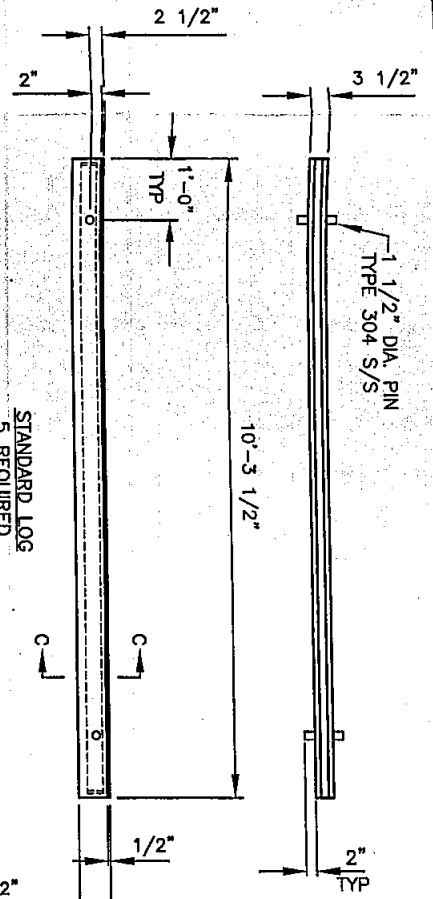
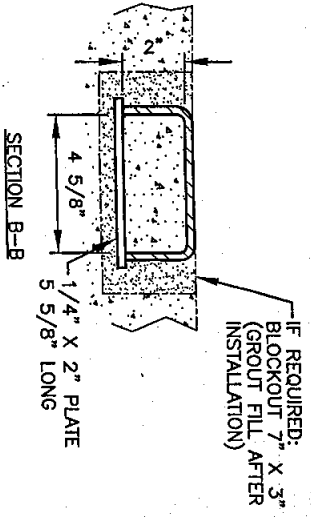
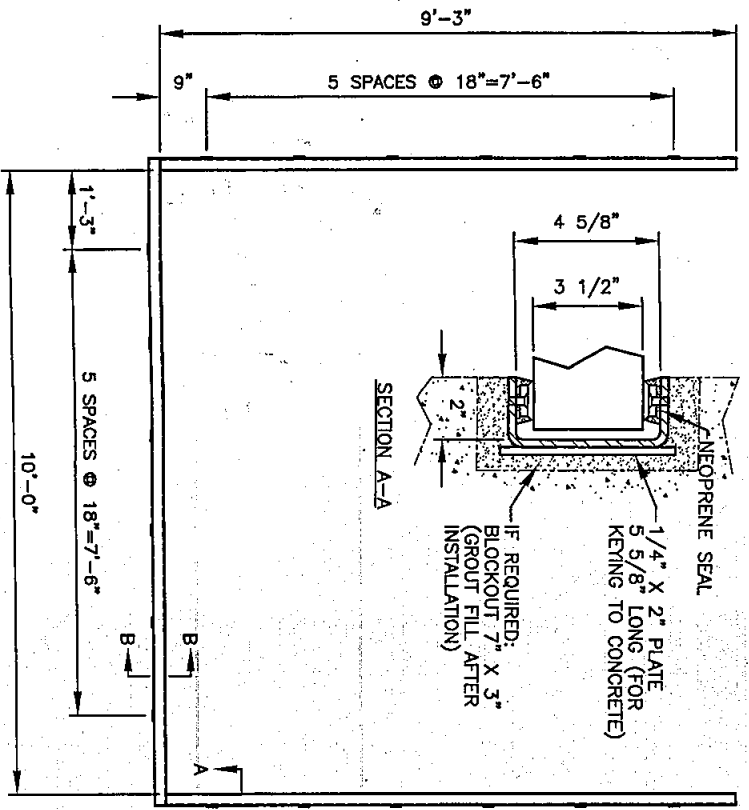
cc: Redevelopment Authority of Somerset County, Walter Walerysiak, Jr. w/ enc
Somerset County Conservation District, Carl Jones, w/ enc

enc

Mailing Address: 336 Bloomfield St., Suite 201
Johnstown, PA 15904

Office Numbers:

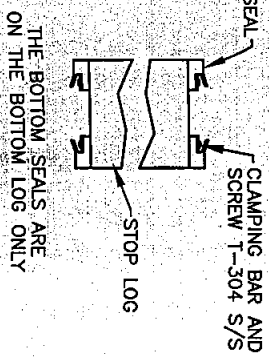
Johnstown: (814) 266-6402 FAX: (814) 266-6530
Uniontown: (724) 439-1313 FAX: (724) 439-0633
Somerset: (814) 443-3384



ALL OTHER DIMENSIONS ARE THE SAME AS STANDARD LOG

NO EXCEPTIONS TAKEN FOR REVISIONS OR DETAILS. REVISE AND RESUBMIT REJECTED. SEE REMARKS BY DATE 10-26-04 BY [Signature]

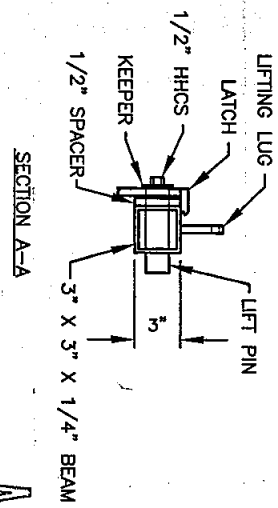
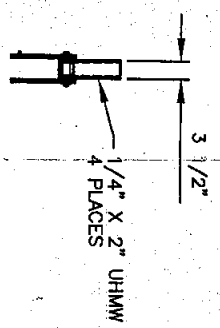
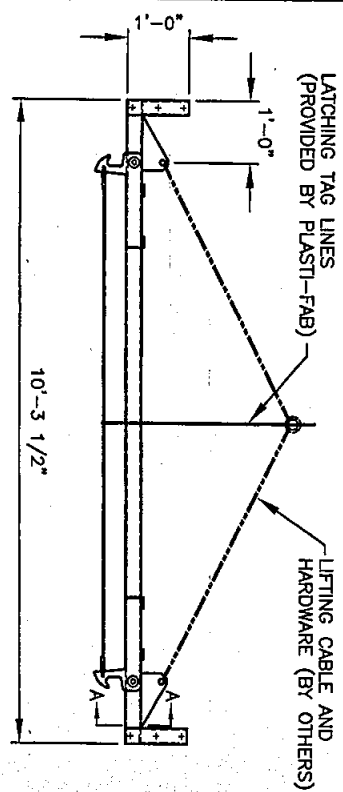
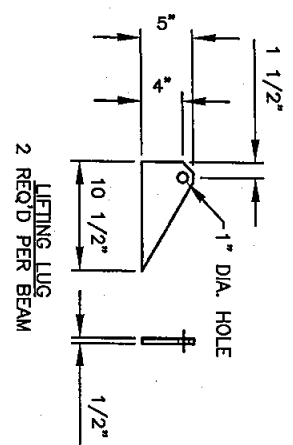
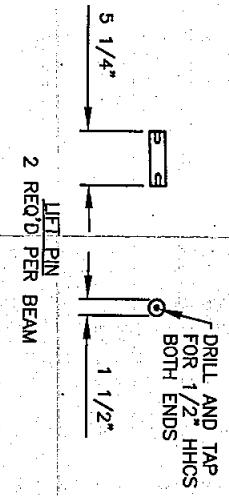
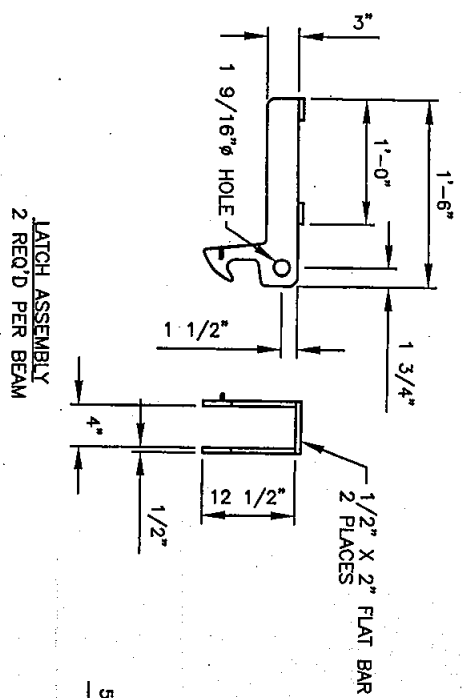
APPROVED
Commonwealth Stone
 10-18-04



- NOTES:
1. STOP LOG MATERIAL IS FRP (FIBERGLASS REINFORCED POLYESTER).
 2. THE LOG COLOR IS GRAY.
 3. THE GUIDE FRAME IS 1/4" FORMED & WELDED TYPE 304 STAINLESS STEEL.

CUSTOMER: MANNA SUPPLY, INC.
 COMMONWEALTH STONE
 FRIEDENS, PA.
 P. O. NO.: 15129RC
 ENGINEER: STEMLER
 REP: FAB JOB NO.: 29756

REVISIONS	
DR. BY: JGC	CHK. BY:
DATE: 8 OCT 2004	
SCALE: 1/2" = 1'-0"	28317-B
Fast-Fab, INC. TUALATIN, OREGON HD COPOLYMER STOP LOG WITH EMBEDDED GUIDE FRAME	



NOTES:
1. THE LIFT BEAM IS HOT DIP GALVANIZED AFTER FABRICATION.
2. THE LIFT PINS, KEEPERS AND BOLTS ARE TYPE 304 STAINLESS STEEL.

CUSTOMER: MANNA SUPPLY INC.
COMMONWEALTH STONE
FRIEDENS, PA.
P. O. NO.: 15129RC
ENGINEER: STEMLER
REP.: PLASTI-FAB JOB NO.: 29756

REVISIONS	

PLASTI-FAB INC.
TUALATIN, OREGON

LIFT BEAM ASSEMBLY
(REF. DRAWING 28317-B)

DR BY: JAG	CHK BY:	28318-B
DATE: 12 OCT 2004		
SCALE: 1/2"=1'-0"		

APPROVED
Conroy
10-18-04