

YELLOW CREEK CITIZEN VOLUNTEER BACTERIA MONITORING STUDY

June 15, 2009 –

Weather & Physical Conditions:

Weather within past 24 hours = **Sunny** Precip within past 24 hours = **None** Present weather = **Sunny**

Water was not Cloudy, no unusual sediment odor and Normal flow

Upper/Downstream, Blank, Duplicate

	<u>Collected/Analyzed</u>	<u>Sample #</u>	<u>Fecal Count #/100ml</u>
Upper	09:30am/10:44am	06152009U	41
Downstream	10:00am/11:00am	06152009D	43

June 22, 2009 –

Weather & Physical Conditions:

Weather within past 24 hours = **Partly Cloudy** Precip within past 24 hours = **Trace** Present weather = **Overcast**

Water Somewhat Cloudy, no unusual sediment odor, flow greater than normal (weather had been rainy up through Tuesday – stream flow was quite rapid)

Upper/Downstream, Blank, Duplicate

	<u>Collected/Analyzed</u>	<u>Sample #</u>	<u>Fecal Count #/100ml</u>
Upper	09:30am/10:25am	0622009U	210
Downstream	10:am/11:00am	0622009D	28

June 29, 2009 –

Weather & Physical Conditions:

Weather within past 24 hours = **Overcast** Precip within past 24 hours = **Trace** Present weather = **Partly Cloudy**

Water was not Cloudy, no unusual sediment odor and Normal flow

Upper/Downstream, Blank, Duplicate

	<u>Collected/Analyzed</u>	<u>Sample #</u>	<u>Fecal Count #/100ml</u>
Upper	09:20am/10:46am	06292009U	236
Upper – Duplicate	09:21am/11:05am	06292009UD	249
Downstream	09:45am/11:20am	06292009D	16

July 6, 2009

Weather & Physical Conditions:

Weather within past 24 hours = **Sunny** Precip within past 24 hours = **None** Present weather = **Sunny**

Water was Very Cloudy, no unusual sediment odor and Normal flow

Upper/Downstream, Blank, Duplicate Collected/Analyzed Sample# Fecal Count #/100ml

Upper 09:25am/10:35am 07062009U 102

Upper - Blank 09:30am/10:50am 07062009UB 0

Downstream 10:00am/11:00am 07062009D 7

July 13, 2009

Weather & Physical Conditions:

Weather within past 24 hours = **Sunny** Precip within past 24 hours = **None** Present weather = **Sunny**

Water was not Cloudy, no unusual sediment odor, normal stream flow

Upper/Downstream, Blank, Duplicate Collected/Analyzed Sample# Fecal Count #/100ml

Upper 09:17am/10:23am 07132009U 233

Down 09:35am/10:45am 07132009D 38

July 20, 2009

Weather & Physical Conditions:

Weather in past 24 hours = **Sunny** Precip within past 24 hours = **Trace** Present weather = **Overcast**

Water was not Cloudy, no unusual sediment odor, normal stream flow

Upper/Downstream, Blank, Duplicate Collected/Analyzed Sample# Fecal Count #/100ml

Upper 09:15am/10:30am 07202009U 134

Downstream 09:37am/10:50am 07202009D 88

July 27, 2009

Weather & Physical Conditions:

Weather in past 24 hours = **Partly Cloudy** Precip within past 24 hours = **None** Present weather = **Partly Cloudy**

Water was Somewhat Cloudy, no unusual sediment odor, normal stream flow

Upper/Downstream, Blank, Duplicate Collected/Analyzed Sample# Fecal Count #/100ml

Upper 09:15am/10:30am 07272009U 88

Downstream 09:35am/10:55am 07272009D 9

August 3, 2009

Weather & Physical Conditions:

Weather in past 24 hours = **Rain** Precip within past 24 hours = **Light** Present weather = **Sunny**
Water was Very Cloudy, no unusual sediment odor, greater than normal flow – heavy rains about 3 days prior to sampling made the water in both areas cloudy, high and rapid

Upper/Downstream, Blank, Duplicate

	<u>Collected/Analyzed</u>	<u>Sample#</u>	<u>Fecal Count #/100ml</u>
Upper	09:15am/10:38am	08032009U	196
Downstream	09:40am/11:00am	08032009D	44
Downstream – Duplicate	09:41am/11:15am	08032009DR	46

August 6, 2009

Weather & Physical Conditions:

Weather in past 24 hours = **Overcast** Precip within past 24 hours = **None** Present weather = **Sunny**
Water was Somewhat Cloudy, no unusual sediment odor, greater than normal flow – upper flow still pretty fast and water still high

Upper/Downstream, Blank, Duplicate

	<u>Collected/Analyzed</u>	<u>Sample#</u>	<u>Fecal Count #/100ml</u>
Upper	09:15am	08062009U	71
Downstream	09:30am	08062009D	25
Downstream – Blank	09:32am	08062009DB	0

August 10, 2009

Weather & Physical Conditions:

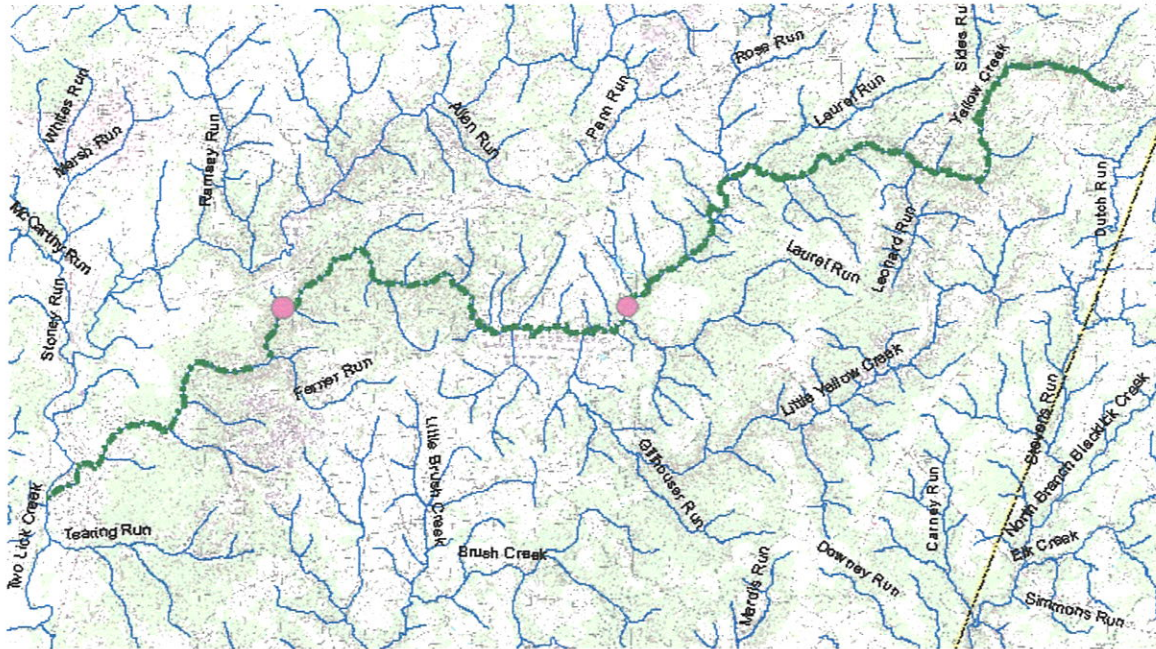
Weather in past 24 hours = **Sunny** Precip within past 24 hours = **None** Present weather = **Overcast**
Water was not Cloudy, no unusual sediment odor and normal stream flow

Upper/Downstream, Blank, Duplicate

	<u>Collected/Analyzed</u>	<u>Sample#</u>	<u>Fecal Count #/100ml</u>
Upper	09:15am	08102009U	79
Downstream	09:45am	08102009D	27

Upper - 40°34'989" x 79°00'151" and Downstream - 40°34'948" x 79°06'013"

Yellow Creek



Green Line: Yellow Creek Recreational Use Attainment

Pink Circles: Sampling Locations